

HBF TEXTILES

NEOCON 2016 COLLECTION
BY CHRISTIANE MÜLLER



**Fabrics with
a character.**

**Christiane
Müller
Collection**



Christiane Müller

Christiane Müller creates surface materials. She exploits the possibilities of machine production through a design process rooted in craftwork. Originally from Germany, Christiane now creates designs from her studio in Amsterdam. With broad international experience as an industrial designer, she develops color and material concepts for innovative products including floors, rugs, walls, interior textiles, lighting and furniture. To Christiane, good design means more than functionality and aesthetics. It means ensuring affordability and capturing the zeitgeist.

Home Work, Work Home.

An inviting collection of tactile comfort that blurs the line between work and home.





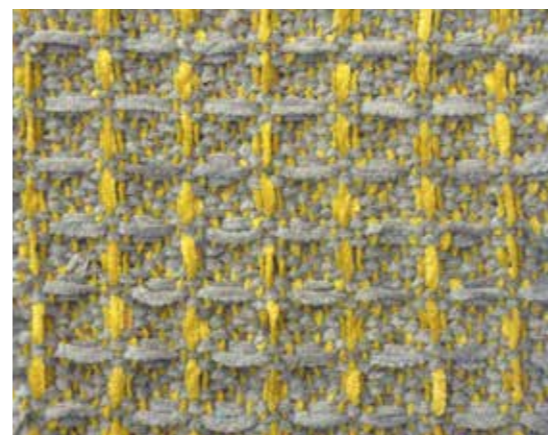
NeoCon 2016



Honest 965



Honest Square 968



Complex 964



Dreamy 969



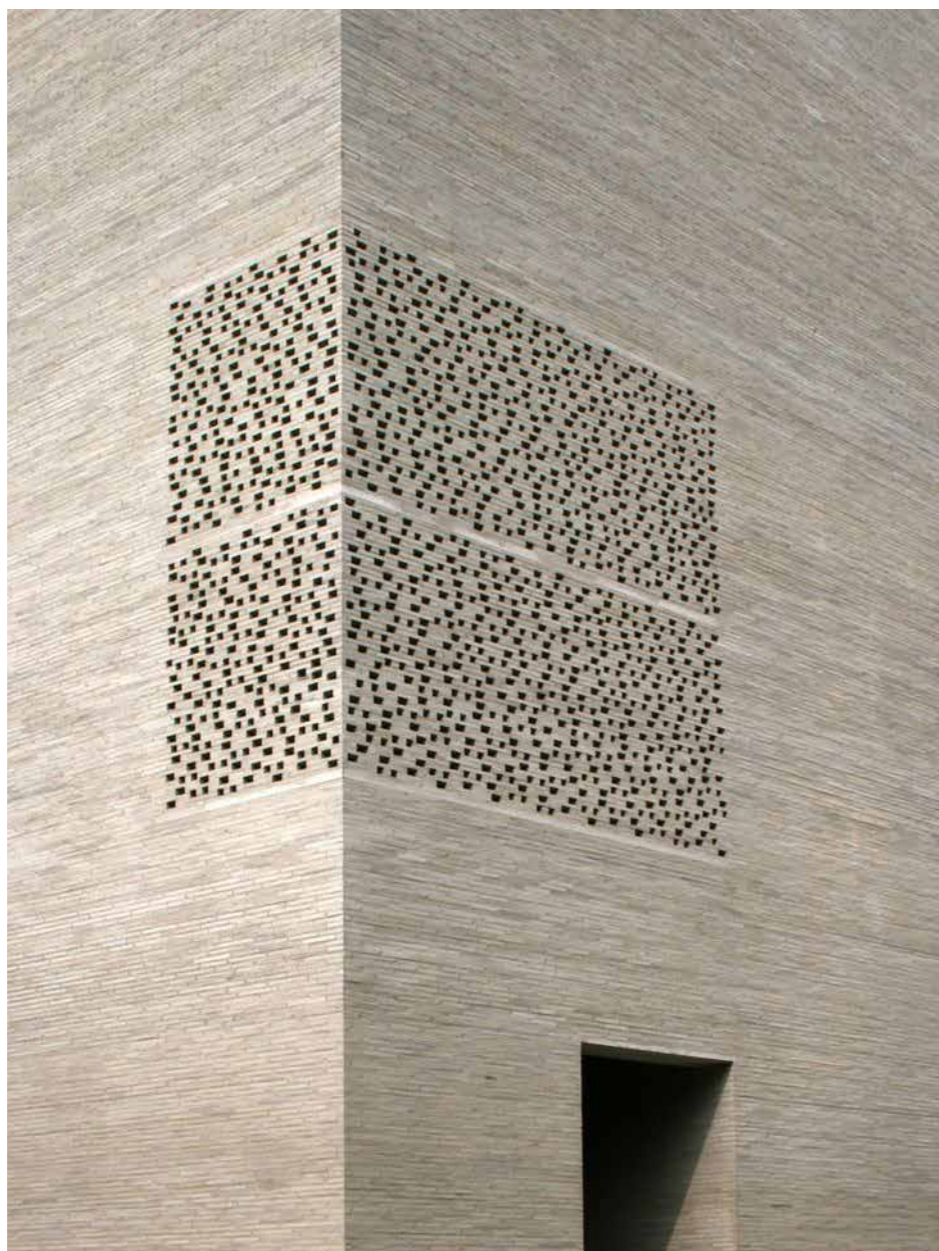
Smart 971

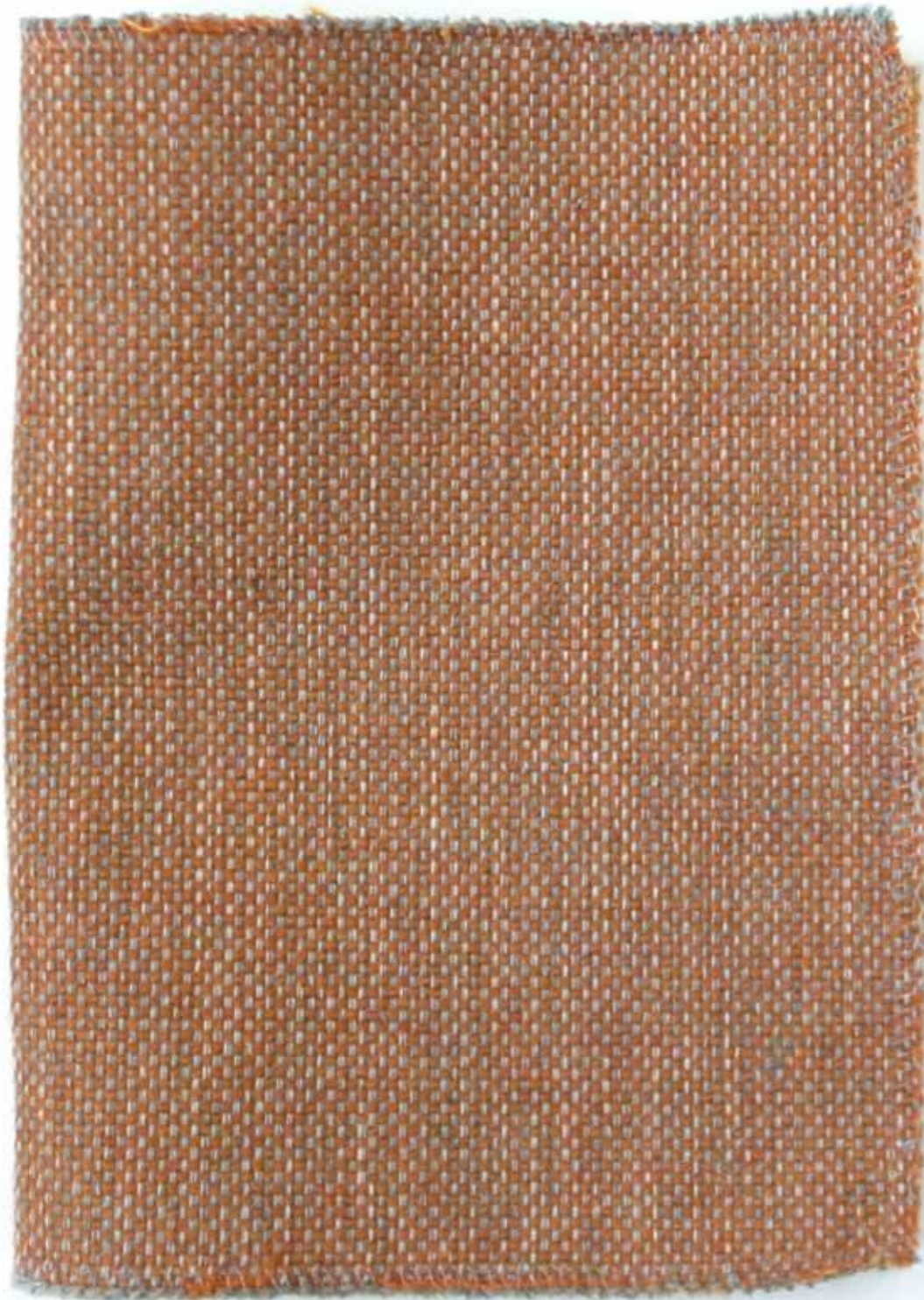


Eccentric 966



Flirt 967





Honest

A natural and modest textile inspired by the work of architect Peter Zumthor, Honest's soft color mélange melds easily with its surroundings, giving new meaning to the "power of ordinary."

COLORWAYS	10
APPLICATION	Upholstery
CONTENT	48% polyester, 33% cotton, 14% wool, 5% nylon
WIDTH	54" W
REPEAT	None
WEIGHT	20.80 ounces per linear yard
FINISH	Stain resistant, Anti-pilling
BACKING	None
ABRASION	52,000 double rubs (W)
ORIGIN	Italy
FLAME RESISTANCE	California TB 117-2013 Section 1 (Pass)
MAINTENANCE	S: Clean with water free dry cleaning solvent
SUSTAINABILITY	47% rapidly renewable content
NOTES	Stitched version available as 968 Honest Square



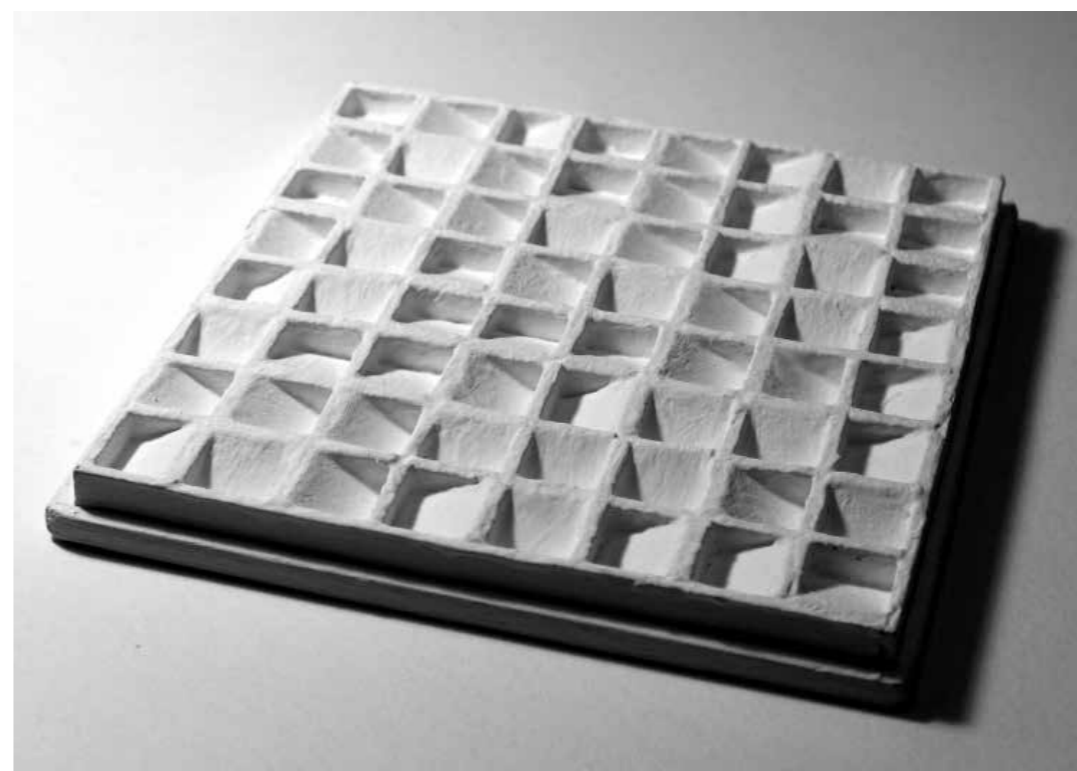
Honest Square

An expressive fabric confident in its own architectural simplicity, Honest Square's unique embroidery is designed to soften surroundings, improve acoustics and create privacy.

COLORWAYS	7
APPLICATION	Upholstery
CONTENT	48% polyester, 33% cotton, 14% wool, 5% nylon face, 100% polyester stitching, 100% polyester foam back
WIDTH	54" W
REPEAT	2 1/8" V x 2 1/8" H
WEIGHT	30.87 ounces per linear yard
FINISH	Stain resistant, Anti-pilling
BACKING	None
ABRASION	52,000 double rubs (W)
ORIGIN	Italy
FLAME RESISTANCE	California TB 117-2013 Section 1 (Pass)
MAINTENANCE	S: Clean with water free dry cleaning solvent
SUSTAINABILITY	47% rapidly renewable content
NOTES	Base cloth available as pattern 965 Honest. Manufactured in 20 yd increments.









Complex

Inspired by the work of Dutch artist Jan Schoonhoven, Complex showcases the beauty of a chenille waffle weave construction with a soft, graphic grid.

COLORWAYS	6
APPLICATION	Upholstery
CONTENT	100% polyester
WIDTH	53" W
REPEAT	3/8" V x 3/8" H
WEIGHT	17.40 ounces per linear yard
FINISH	None
BACKING	None
ABRASION	80,000 double rubs (W)
ORIGIN	Germany
FLAME RESISTANCE	California TB 117-2013 Section 1 (Pass)
MAINTENANCE	S: Clean with water free dry cleaning solvent
NOTES	Open weave structure is an intended design element

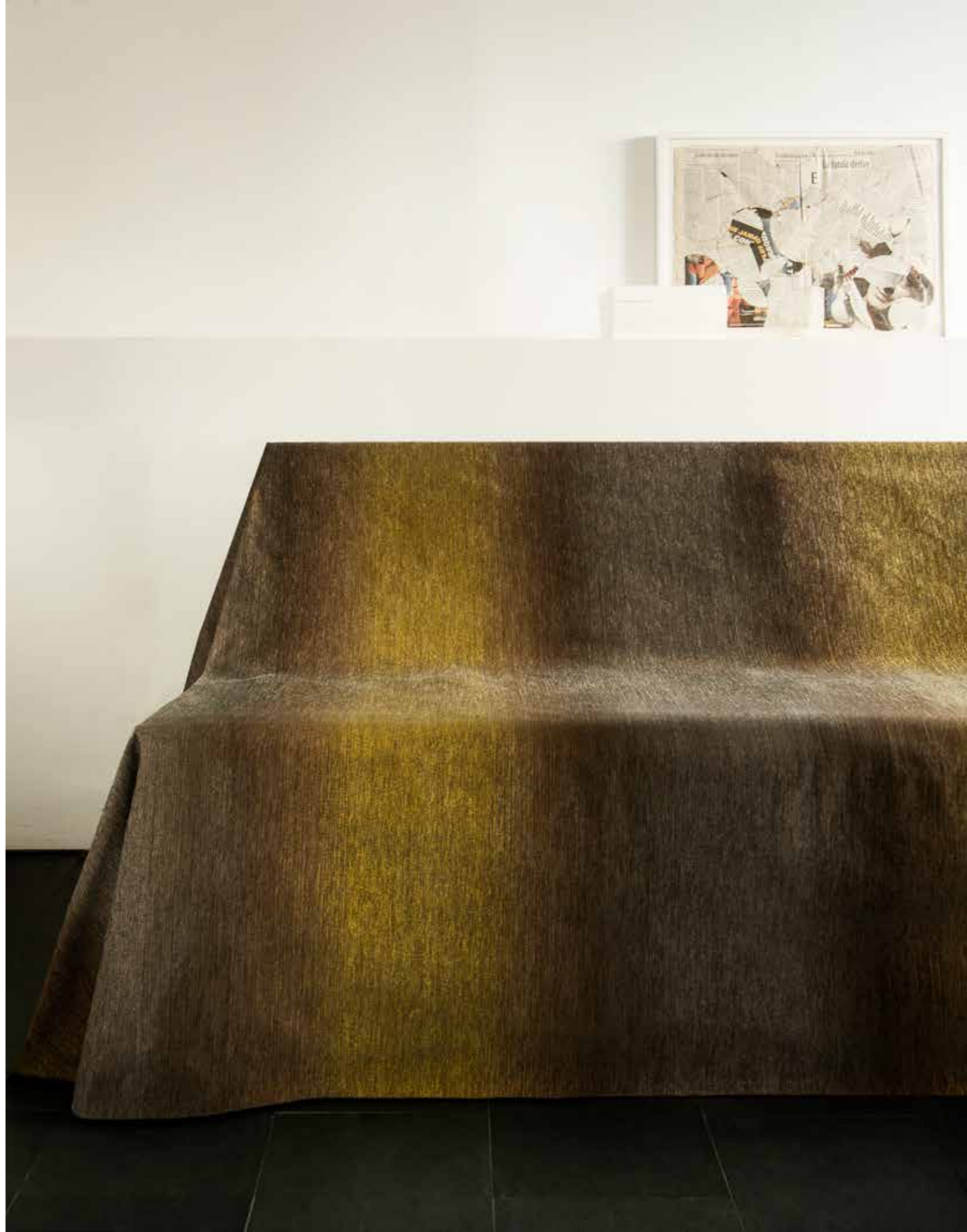


Dreamy

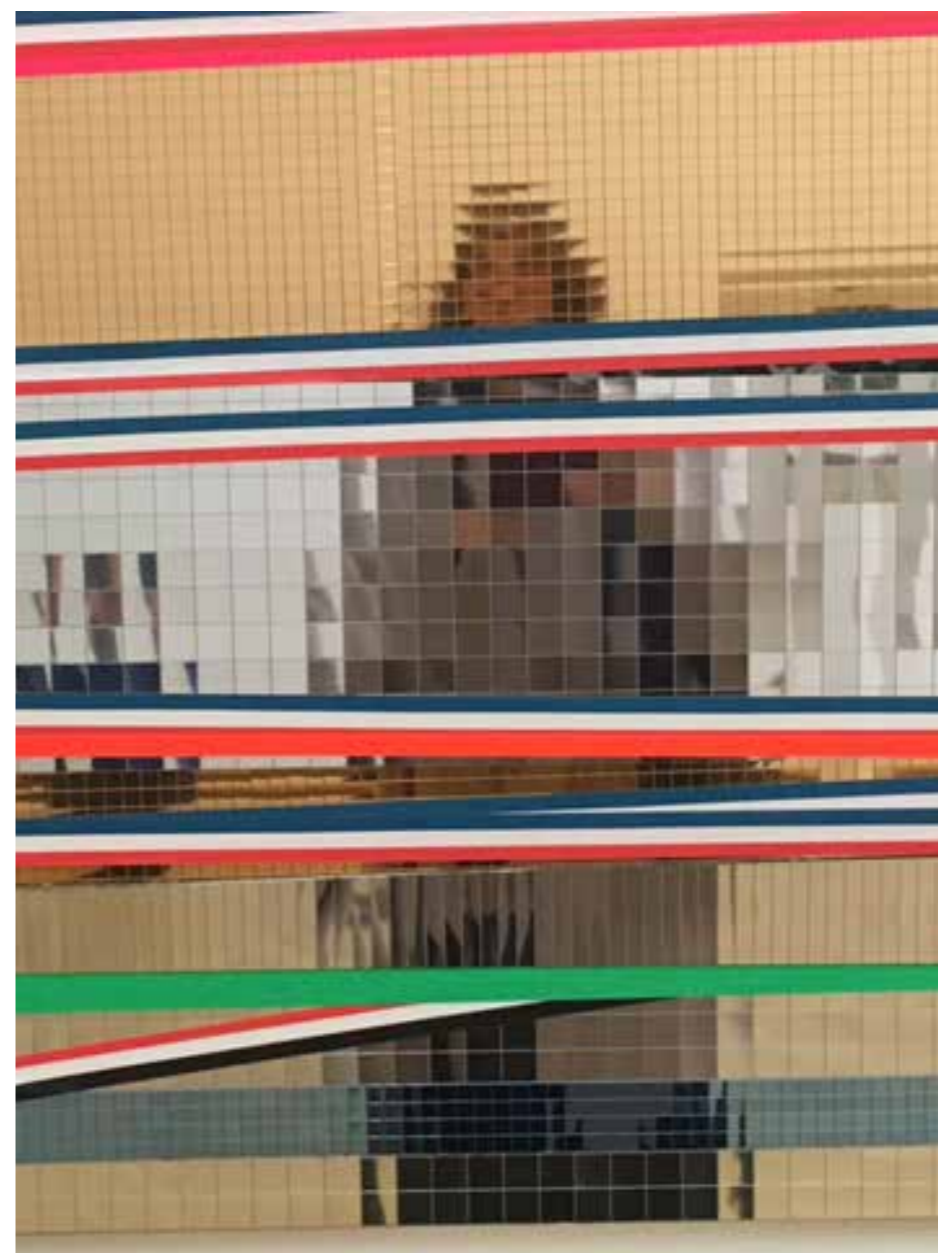
Embodying the ethereal feeling of an Alexis Semtner abstract painting, Dreamy's soft chenille yarns employ a subtle ombre, blurring the line of where color ends and begins.

COLORWAYS	6
APPLICATION	Drapery, wrapped panel
CONTENT	100% Trevira® CS
WIDTH	54" W
REPEAT	37 3/4" H (fabric shown railroaded)
WEIGHT	25.28 ounces per linear yard
FINISH	None
BACKING	None
ABRASION	100,000 double rubs (W)
ORIGIN	Germany
FLAME RESISTANCE	California TB 117-2003 Section 1 (Pass), NFPA 701(Pass)
MAINTENANCE	W: Clean with water based shampoo or foam upholstery cleaner
NOTES	Large scale design









Smart

A playful interaction of pattern, texture and hue, Smart's edgy three-dimensional plaid and luxurious velvet composition is inspired by Isa Gensken's savvy combinations of color and material.

COLORWAYS	6
APPLICATION	Upholstery
CONTENT	100% acrylic face, 98% polyester, 2% acrylic back
WIDTH	54" W
REPEAT	6 1/2" V x 7" H
WEIGHT	22.03 ounces per linear yard
FINISH	None
BACKING	None
ABRASION	85,000 double rubs (W)
ORIGIN	Germany
FLAME RESISTANCE	California TB 117-2013 Section 1 (Pass)
MAINTENANCE	WS: Clean with upholstery shampoo or mild dry cleaning solvent
NOTES	Large scale design





Eccentric

Luxury in its purest form, Eccentric's mohair velvet construction captures hidden colors and the essence of Lex Pott.

COLORWAYS	5
APPLICATION	Upholstery
CONTENT	100% mohair face, 54% mohair, 46% cotton back
WIDTH	54" W
REPEAT	None
WEIGHT	22.60 ounces per linear yard
FINISH	None
BACKING	None
ABRASION	70,000 double rubs (W)
ORIGIN	Netherlands
FLAME RESISTANCE	California TB 117-2013 Section 1 (Pass)
MAINTENANCE	WS: Clean with upholstery shampoo or mild dry cleaning solvent
SUSTAINABILITY	100% rapidly renewable content
NOTES	High contrast colors create an intended two-tone appearance.



Flirt

A nod to the playful work of fashion designer Walter Van Beirendonck, Flirt's vivid combination of boucle fabric and fluorescent yarns create an immediate sense of comfort and unexpected whimsy.

COLORWAYS	5
APPLICATION	Upholstery
CONTENT	39% linen, 24% wool, 15% cotton, 12% bamboo rayon, 10% nylon
WIDTH	51" W
REPEAT	None
WEIGHT	31.00 ounces per linear yard
FINISH	None
BACKING	None
ABRASION	30,000 double rubs (W)
ORIGIN	Belgium
FLAME RESISTANCE	California TB 117-2013 Section 1 (Pass)
MAINTENANCE	S: Clean with water free dry cleaning solvent
SUSTAINABILITY	78% rapidly renewable content



NeoCon 2016 Pattern Color Rotation



Honest 965

- | | |
|---------------|----------------|
| 18 Pebble | 84 Overcast |
| 37 Driftwood | 45 Bittersweet |
| 22 Lemon | 43 Coral |
| 51 Sky | |
| 39 Peppercorn | |
| 75 Burgundy | |
| 98 Smoke | |



Honest Square 968

- | |
|-------------|
| 22 Lemon |
| 56 Lagoon |
| 51 Sky |
| 98 Smoke |
| 84 Overcast |
| 18 Pebble |
| 43 Coral |



Complex 964

- | |
|----------------|
| 18 Pebble |
| 22 Lemon |
| 51 Sky |
| 98 Smoke |
| 84 Overcast |
| 45 Bittersweet |



Dreamy 969

- | |
|---------------|
| 22 Lemon |
| 18 Pebble |
| 56 Lagoon |
| 58 Dutch Blue |
| 84 Overcast |
| 43 Coral |



Smart 971

- | |
|----------------------|
| 22 Lemon |
| 55 Bachelor's Button |
| 18 Pebble |
| 84 Overcast |
| 98 Smoke |
| 43 Coral |



Eccentric 966

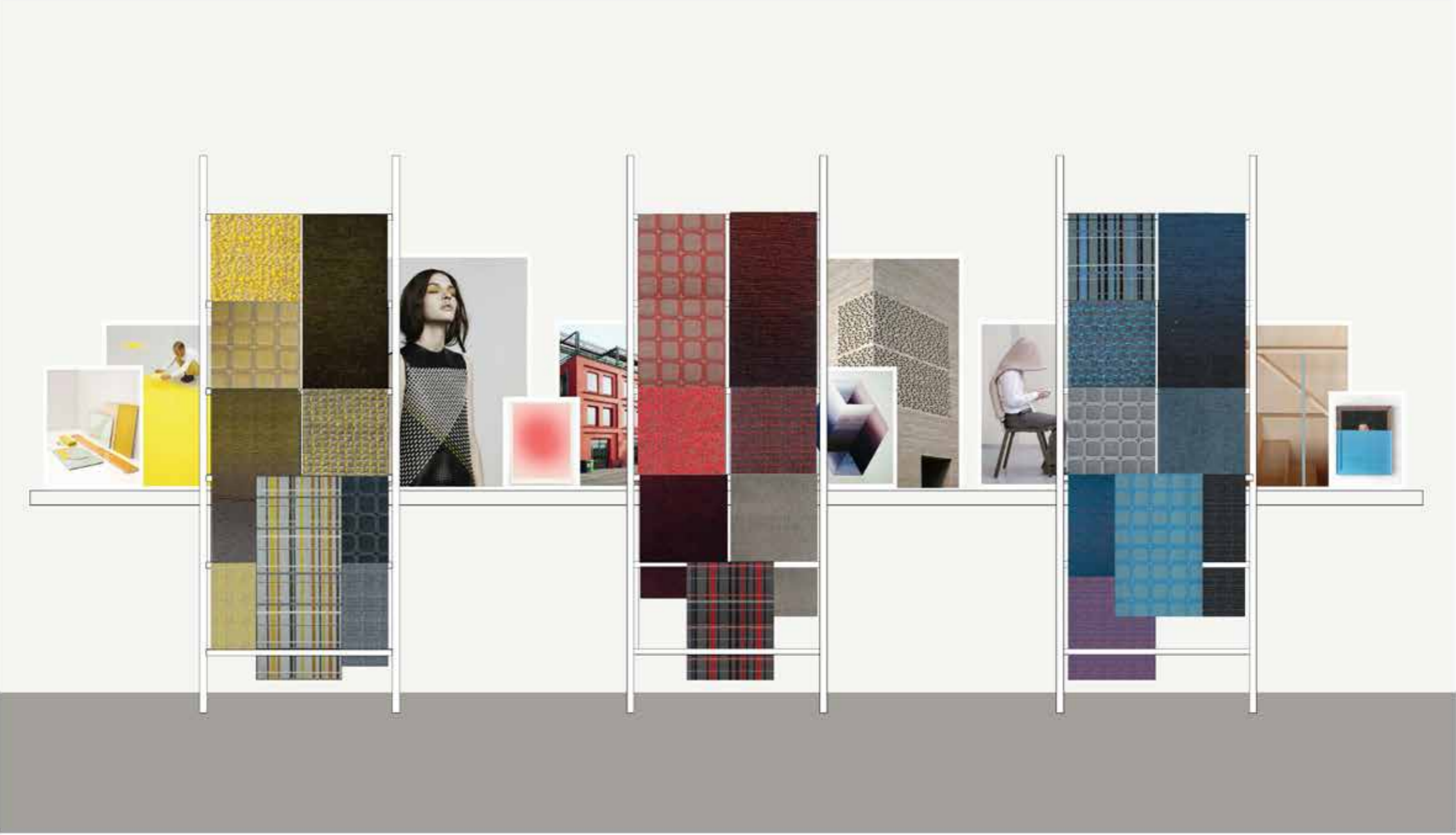
- | |
|---------------|
| 63 Fern |
| 84 Overcast |
| 39 Peppercorn |
| 58 Dutch Blue |
| 74 Currant |



Flirt 967

- | |
|--------------|
| 22 Lemon |
| 56 Lagoon |
| 90 Shadow |
| 16 Whitewash |
| 43 Coral |

NeoCon 2016 Showroom Feature Wall



NeoCon 2016 Showroom Feature Wall



- 1 Flirt 967-22 Lemon
- 2 Honest Square 968-22 Lemon
- 3 Dreamy 969-22 Lemon
- 4 Honest 965-22 Lemon
- 5 Eccentric 966-63 Fern
- 6 Complex 964-22 Lemon
- 7 Smart 971-22 Lemon
- 8 Honest Square 968-90 Smoke
- 9 Honest 965-84 Overcast

NeoCon 2016 Showroom Feature Wall

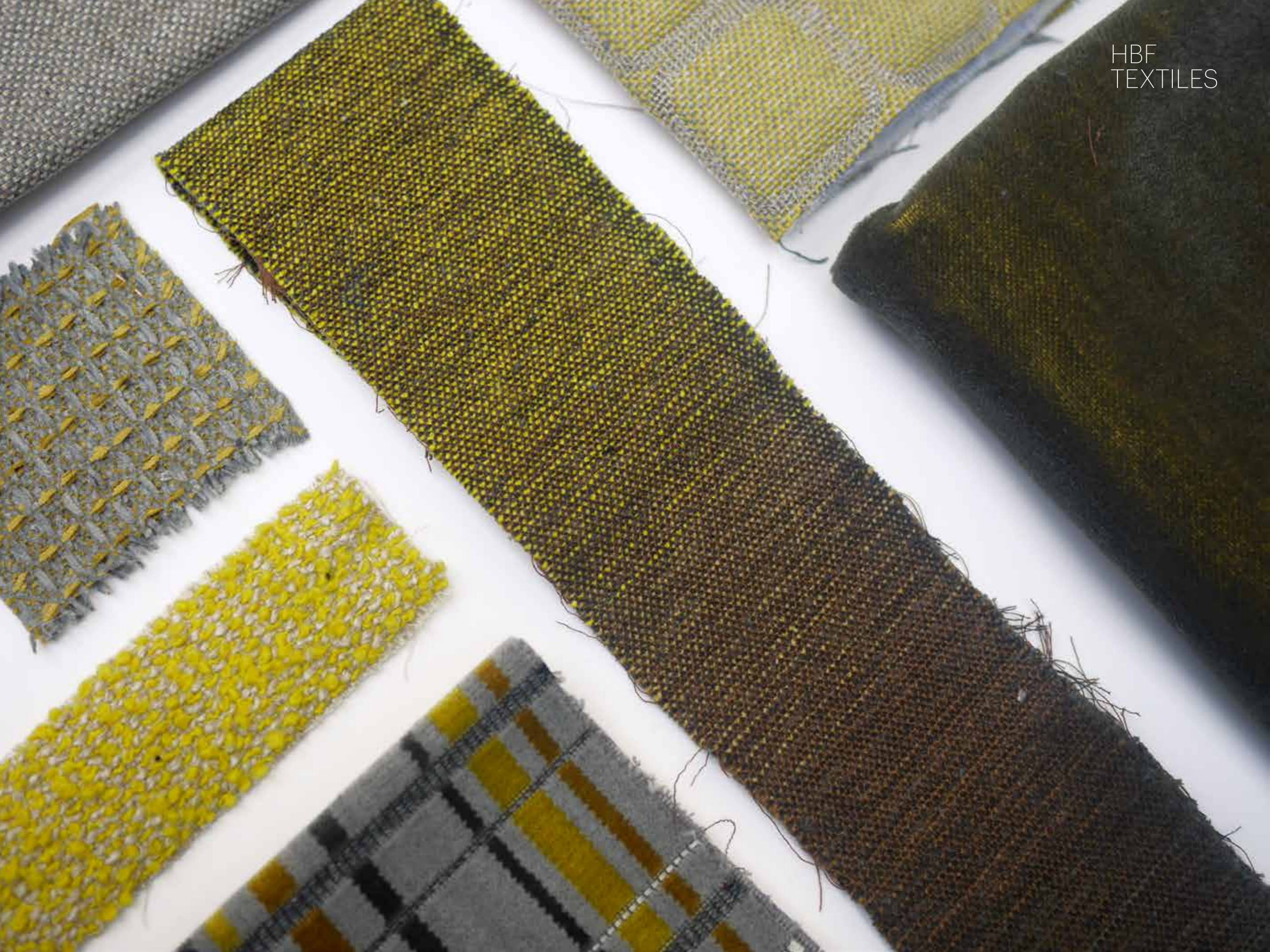


- 1 Honest Square 968-45 Bittersweet
- 2 Flirt 967-43 Coral
- 3 Eccentric 966-74 Currant
- 4 Dreamy 969-43 Coral
- 5 Complex 964-45 Bittersweet
- 6 Honest 965-37 Driftwood
- 7 Smart 971-43 Coral

NeoCon 2016 Showroom Feature Wall



- 1 **Smart 971-55 Bachelor's Button**
- 2 **Complex 964-51 Sky**
- 3 **Honest Square 968-84 Overcast**
- 4 **Eccentric 966-58 Dutch Blue**
- 5 **Honest 965-43 Coral**
- 6 **Dreamy 969-58 Dutch Blue**
- 7 **Eccentric 966-84 Overcast**
- 8 **Honest Square 968-51 Sky**
- 9 **Honest 965-98 Smoke**



HBF
TEXTILES

HBF
TEXTILES



HBF
TEXTILES

HBF
TEXTILES







HBF
TEXTILES

PROPORTIO

HBF
TEXTILES

HBF
TEXTILES

1

2

HBF
TEXTILES

HBF TEXTILES









HBF
TEXTILES

