

HBF
TEXTILES

LOST & FOUND COLLECTION BY CHRISTIANE MÜLLER



Lost & Found Collection

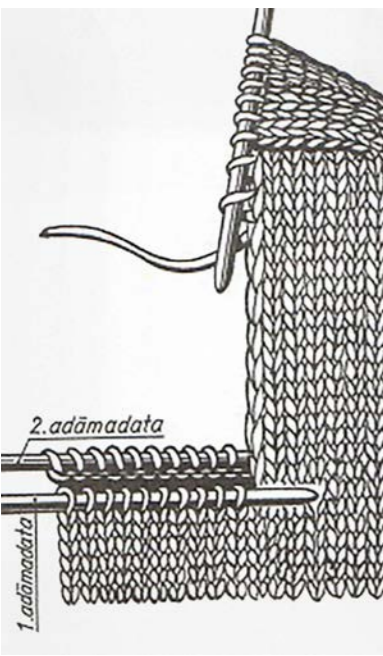
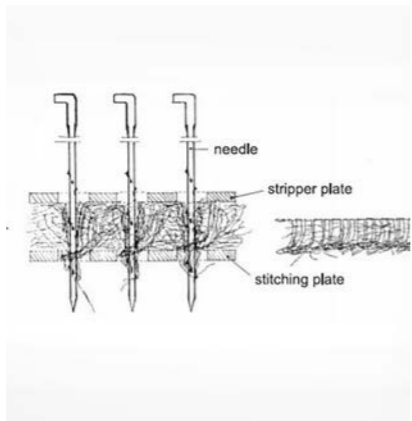


Christiane Müller

With decades of international experience as a textile and surface designer, Christiane Müller has come to honor the culture and craftsmanship that goes into producing textiles. Her goal is to ensure that age-old crafts not only survive but are infused with new life. Her latest collection for HBF Textiles showcases the potential of these crafts in making innovative textiles with meaning and soul for today's world.

“The Lost & Found collection re-examines the rich world of textiles, reinterprets their techniques, reconnects us with their history, reflects on their meaning, reinforces their functionality, renews their significance, reaffirms their value, and rediscovers their timeless beauty. What is almost lost is found again.”

– Christiane Müller



Lost & Found Collection



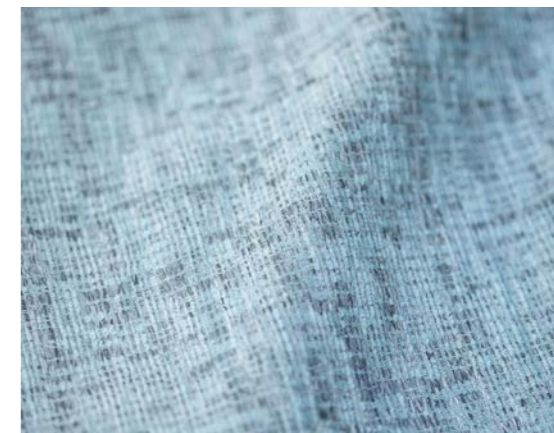
Crafted Felt 1017



Crafted Cloud 1018



Woven Memory 1019



Timeless Twine 1022



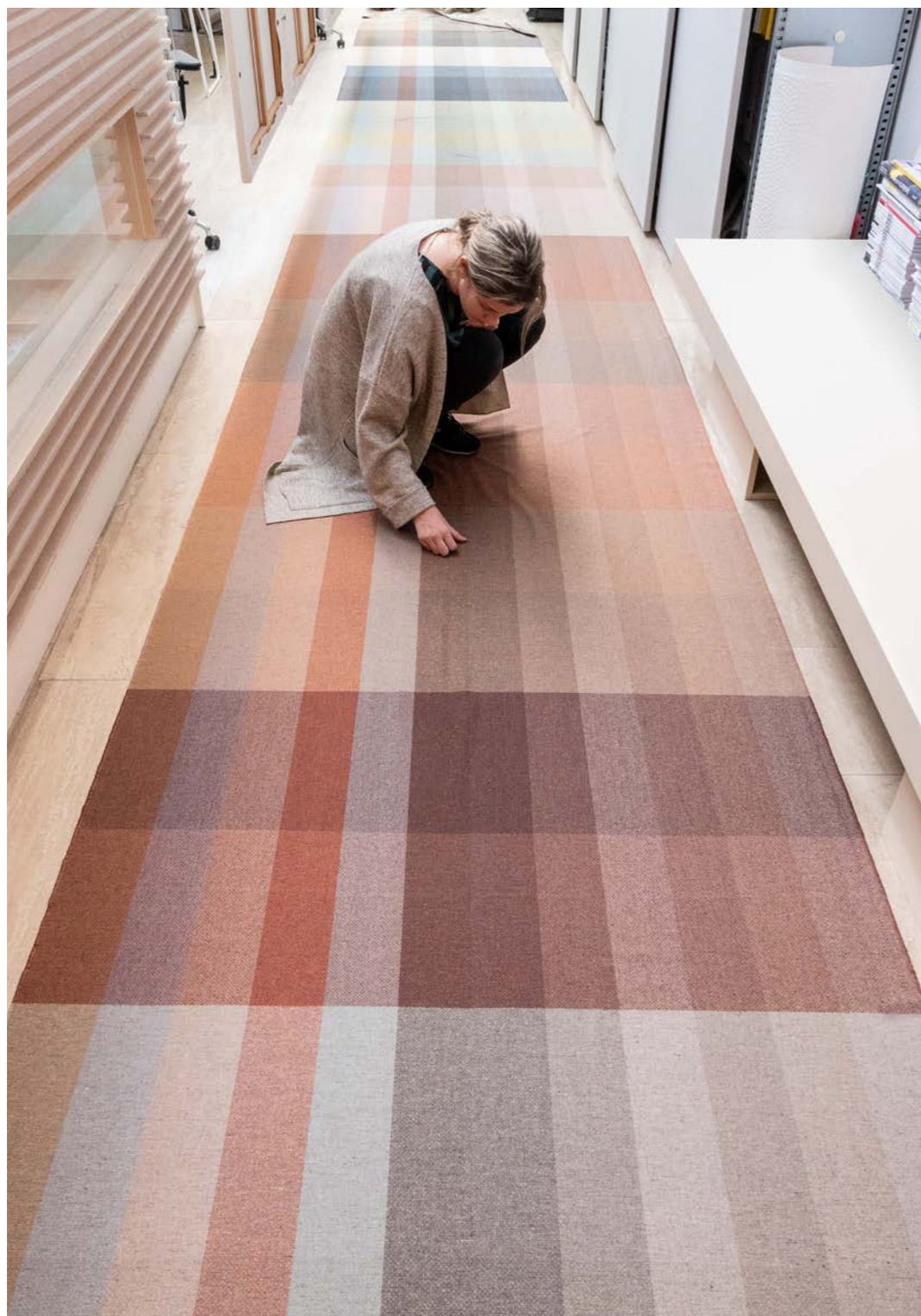
Enriched Bouclé 1021



Quilted Comfort 1020



Cherished Knit 954



Crafted Felt

During the process of felting, wool fabric is matted together by heat, moisture, and great pressure...decades ago, women in the villages joined together to felt cloth, singing their songs in the rhythm of the movement of the fabrics. The sound recording of the producer Lomax is a beautiful inspiring documentation of this.

PATTERN	1017
COLORWAYS	11
APPLICATION	Upholstery, drapery
CONTENT	67% wool, 28% polyester, 3% nylon, 2% acrylic
WIDTH	55" W
REPEAT	None
FINISH	None
BACKING	None
ABRASION	100,000 double rubs (Wyzenbeek)
ORIGIN	Italy
FR RATING	California TB 117-2013 Section 1 (Pass), NFPA 701 (Pass)
MAINTENANCE	S: Clean with water free dry cleaning solvent
SUSTAINABILITY	67% rapidly renewable content



Crafted Felt 1017
Crafted Cloud 1018



**Crafted Cloud 1018
Drapery**

Crafted Cloud

Needle punching is a craft of looping yarn or floss in the format of a pattern through fabric. Needle punching has been in existence since the ancient Egyptians began making needles out of hollow bird bones.

I was always fascinated by the beauty of assembling, repairing and mending of textiles. You wanted the clothes you were attached to as a child to last forever. In the Japanese tradition, the technique of Boro gave the poor farmer and fisherman the option to extend the life of their clothing. In **Crafted Cloud**, the patchwork of stitches not only generates a longer lasting fabric but also tells the story of the owner.

PATTERN	1018
COLORWAYS	5
APPLICATION	Upholstery, drapery
CONTENT	70% wool, 23% polyester, 5% acrylic, 2% nylon
WIDTH	53" W
REPEAT	23 1/2" V x 49" H
FINISH	None
BACKING	None
ABRASION	50,000 double rubs (W)
ORIGIN	Italy
FR RATING	California TB 117-2013 Section 1 (Pass), NFPA 701 (Pass))
MAINTENANCE	S: Clean with water free dry cleaning solvent
SUSTAINABILITY	70% rapidly renewable content
NOTES	Base cloth available as pattern 1017 Crafted Felt. Large scale repeat. Random repeat is intended for upholstery application.



Crafted Cloud 1018
Crafted Felt 1017



Woven Memory

Weaving is the craft or action of forming fabric by interlacing threads.

This woven fabric, made of wool and recycled cotton, is a place of encounter and a memory of my childhood at the same time. I remember sitting as a child on a plaid blanket in the forest on a warm autumn day. The blanket was my playground. It kept me warm in winter and joined my family on holidays. With Woven Memory, I wanted to capture that feeling again.

PATTERN	1019
COLORWAYS	6
APPLICATION	Upholstery
CONTENT	49% Wool, 39% Cotton, 9% Polyester, 3% Nylon
WIDTH	53" W
REPEAT	25 1/2" V x 27" H
FINISH	None
BACKING	Light acrylic
ABRASION	100,000 double rubs (Wyzenbeek)
ORIGIN	United States
FR RATING	California TB 117-2013 Section 1 (Pass)
MAINTENANCE	S: Clean with water free dry cleaning solvent
SUSTAINABILITY	88% rapidly renewable content
NOTES	Large scale repeat



Woven Memory 1019
Quilted Comfort 1020



Timeless Twine 1022
Cherished Knit 954

Timeless Twine

Twining or twisting is a process that binds fibers or yarns together in a continuous strand, accomplished in spinning or operations.

Timeless Twine is a soft, yet strong, chenille weave that tells a story about showing time and aging in a beautiful way. This fabric, with its rich patina, doesn't want to look brand new and sterile. It reminds me of the clothes you never want to throw away. They make you feel good, the longer you wear them.

PATTERN	1022
COLORWAYS	6
APPLICATION	Upholstery, wrapped panel, systems panel, drapery
CONTENT	100% Trevira CS
WIDTH	58" W
REPEAT	None
FINISH	None
BACKING	None
ABRASION	85,000 cycles (M)
ORIGIN	Germany
FR RATING	California TB 117-2013 Section 1 (Pass), Class A rated ASTM E-84 (unadhered), NFPA 701 (Pass)
MAINTENANCE	W: Clean with water based shampoo or foam upholstery cleaner



Enriched Bouclé 1021



Enriched Bouclé

Embroidery is the technique of working raised designs in threads of silk, cotton, gold, silver, or other material, upon any woven fabric with a needle. It has been practiced for decades. The origin of embroidery can be dated back to Cro-Magnon days or 30,000 BC.

For ages, the technique of embroidery is used to enrich and personalize a fabric. An embroidered initial reveals the owner, while patterns of stitches turn every textile into a unique, luxurious piece.

PATTERN	1021
COLORWAYS	5
APPLICATION	Upholstery
CONTENT	63% polyester, 37% acrylic
WIDTH	56" W
REPEAT	7 1/8" V x 7 1/8" H
FINISH	None
BACKING	None
ABRASION	100,000 double rubs (Wyzenbeek)
ORIGIN	Germany
FR RATING	California TB 117-2013 Section 1 (Pass)
MAINTENANCE	WS: Clean with upholstery shampoo or mild dry cleaning solvent. Bleach solutions of up to 10% for cleaning difficult stains.
NOTES	Bleach cleanable.



Enriched Bouclé 1021
Timeless Twine 1022
Wrapped Panel



Quilted Comfort 1020

Quilted Comfort

Quilting is the process of sewing two or more layers of fabric together to make a thicker padded material. In Europe, quilting appears to have been introduced by Crusaders in the 12th century as a quilted garment worn under armor.

Quilted Comfort brings with it a secure feeling of protection. Inspired by garments worn by Crusaders in the 12th century, it wraps our interior and provides comfort and softness.

PATTERN	1020
COLORWAYS	7
APPLICATION	Upholstery, wrapped panel, systems panel
CONTENT	100% polyester
WIDTH	50" W
REPEAT	3 7/8" V x 2 5/8" H
FINISH	None
BACKING	None
ABRASION	55,000 double rubs (Wyzenbeek)
ORIGIN	Germany
FR RATING	California TB 117-2013 Section 1 (Pass), Class A rated ASTM E-84 (unadhered)
MAINTENANCE	W: Clean with water based shampoo or foam upholstery cleaner. Bleach solutions of up to 10% for cleaning difficult stains.
NOTES	Bleach cleanable



**Quilted Comfort 1020
Drapery**





Cherished Knit

Knitting is a technique of making fabric with yarn on two or more needles. The word 'knitting' comes from the word 'knot'.

Cherished Knit is a richly woven fabric inspired by the technique of knitting. The twist of the yarns enhances the man-made character, and the irregularity in the weave connects to the hand of the makers.

PATTERN	954
COLORWAYS	8
APPLICATION	Upholstery
CONTENT	56% acrylic, 26% cotton, 15% wool, 3% polyester
WIDTH	54" W
REPEAT	None
FINISH	Alta™
BACKING	None
ABRASION	65,000 cycles (M)
ORIGIN	Italy
FR RATING	California TB 117-2013 Section 1 (Pass)
MAINTENANCE	S: Clean with water free dry cleaning solvent
SUSTAINABILITY	41% rapidly renewable content



Cherished Knit 954
Crafted Cloud 1018

Lost & Found Collection Pattern Color Rotation



Crafted Felt 1017

31 Hazelnut	58 Blue Elderberry
25 Honey	59 Wild Blueberry
40 Lychee	81 Oyster
74 Ancho Chile	89 Grey Salt
46 Rosehip	90 Black Truffle
56 Juniper	



Crafted Cloud 1018

31 Hazelnut
46 Rosehip
81 Oyster
58 Blue Elderberry
89 Grey Salt



Woven Memory 1019

63 Turmeric
46 Rosehip
40 Lychee
56 Juniper
90 Black Truffle
25 Honey



Timeless Twine 1022

81 Oyster
63 Turmeric
31 Hazelnut
46 Rosehip
56 Juniper
25 Honey



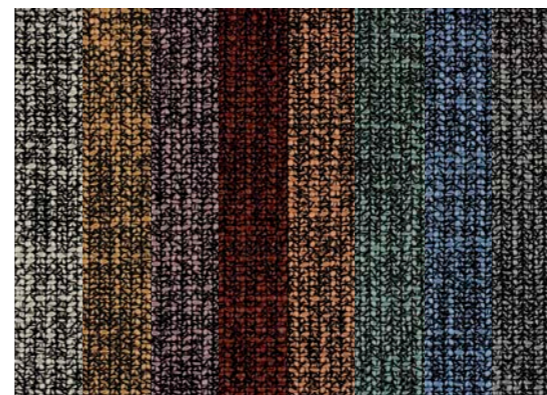
Enriched Bouclé 1021

11 Macadamia
63 Turmeric
89 Grey Salt
55 Poppy Seed
31 Hazelnut



Quilted Comfort 1020

63 Turmeric	58 Blue Elderberry
89 Grey Salt	
40 Lychee	
46 Rosehip	
56 Juniper	
25 Honey	



Cherished Knit 954

81 Oyster	58 Blue Elderberry
31 Hazelnut	90 Black Truffle
40 Lychee	
74 Ancho Chili	
46 Rosehip	
56 Juniper	

Lost & Found Collection