

HON

Make your space work®



Motivate®

Seating & Tables

Adapt. React. Motivate.

Be Ready For The Unexpected

At HON, we understand that to get the most out of your workspace, adaptability and flexibility are key. You need to be able to turn a group meeting area into an impromptu training room in a matter of minutes. Our Motivate collection of office furniture solutions - from durable tables, comfortable seating, and tech-savvy presentation tools - work together in harmony to provide a comprehensive environment that's ideal for creative collaboration and intensive learning.



SCAN TO
CHECK OUT
MOTIVATE ON
HON.COM





Go The Distance

Motivate products complete any environment, from a small impromptu meeting, to a dedicated collaborative space, to a large training area.



The Power To Do It All

Don't just meet your expectations. Exceed them.

Having a choice matters, which is why Motivate isn't your average table. From fixed, nesting, and height-adjustable base options that provide simple set-up and effortless storage to built-in modular power that delivers pluggable non-sequential technology, these solutions offer powerhouse performance and exceptional quality. Even better, Motivate can be snapped together without tools and offer options like modesty panels, wire and technology management, and ganging hardware - it's almost like having an extra person on the team who does all the heavy lifting.



You Can Have It All

Motivate goes above and beyond the basics. Convenient presentation carts, sturdy desktop lecterns, and mobile markerboards deliver all the tools necessary for an unforgettable training session or high-impact presentation. Add some style with a variety of traditional or contemporary edges. Gain layout flexibility in your space by customizing tables with fixed or nesting bases. Increase comfort with table legs that are positioned closer to the edge to provide maximum legroom. Choose height-adjustable or folding top options, and put technology at your fingertips with grommets or flip tops that route power and wiring.

Presentation Cart



Lectern and Presentation Cart

Mobile Markerboard



30", 36" Widths

Edge Options



2mm Edge



Ergo-Edge

Technology Options



Grommet



Flip-Top

Base Options



Fixed



Nesting



Height-Adjustable

More Power To You

Power wherever you need it. Extra space whenever you don't. Motivate modesty panels offer the privacy you want, and Interlink IQ Electrical delivers the power and technology you need. Nesting tables move neatly out of the way when not in use, and height-adjustable tables adjust from 27.5" to 32.5" to accommodate any size user.



Make It Your Own

Motivate chairs conform to your space just as well as they conform to your body. Whatever your needs, Motivate has the solution. From casters to glides, plastic shells to upholstered seats and backs, you get exactly what you want. Choose from high density or 4-leg stackers, swivel chairs and stools, or maximize your space with nesting/stacking chairs. Complement your current aesthetic by choosing from a wide variety of colors and fabrics. Our optional upholstered seat and back feature wear-resistant fabrics that are durable and long-lasting, allowing you to enjoy Motivate for years to come.



Get Inspired



Turn Dull Into Dynamic

Lengthy training sessions don't have to be a bore. Inject some energy into your space with Motivate's versatile tables, supportive chairs, and smart presentation products. With built-in technology, intuitive flexibility, and endless adaptability, Motivate is a no-brainer solution for any multipurpose space.



Shown with Preside® tables.



Celebrate The Way People Work Together

Collaboration isn't one-size-fits-all. You need a flexible solution that brings people and their shared space together in a way that encourages lively debate and thoughtful discourse. Because Motivate chairs are lightweight and mobile, it's an ideal solution for all kinds of communication and workflows. And as an added benefit, Motivate can be stored in convenient, space-saving nests or stacks and are ready to move when and where you need it. Best of all, you'll never have to sacrifice comfort – Motivate's contoured plastic shell and flex-back technology intuitively provide balance and lumbar support for ergonomic recline. Optional 4-Way Stretch mesh back and upholstered seat enhance comfort with added airflow and cushioning. With Motivate, collaboration comes naturally.



Counter Height Stool
This stool height coordinates with HON counter height tables and standing height applications.



Café Height Stool
This stool height is designed to work with HON café height tables and other cafe height applications.



Nesting/Stacking Chairs
Ready at a moment's notice, they are comfortable enough to sit through a full day of training, yet easily and effortlessly pushed out of the way when not in use.



Stacking Chairs
Make the most of your space with these comfortable, lightweight chairs that stack six high.



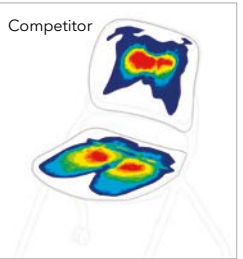
4-Way Stretch Mesh
This innovative material increases support, comfort, breathability and air flow.



Supportive Back
The plastic back cradles your body and flexes to allow greater support.



Pressure Testing
Motivate seating was pressure tested against competitive products to ensure maximum comfort for longer periods of time.



Seating



Tables

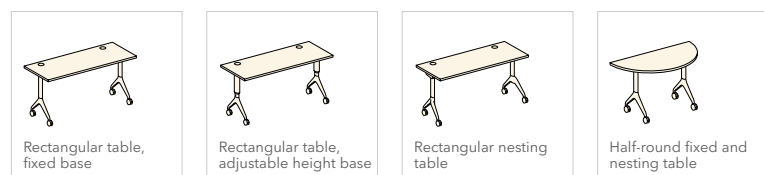
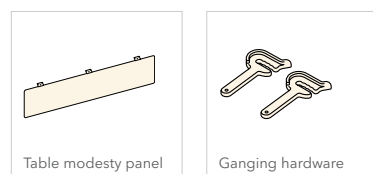
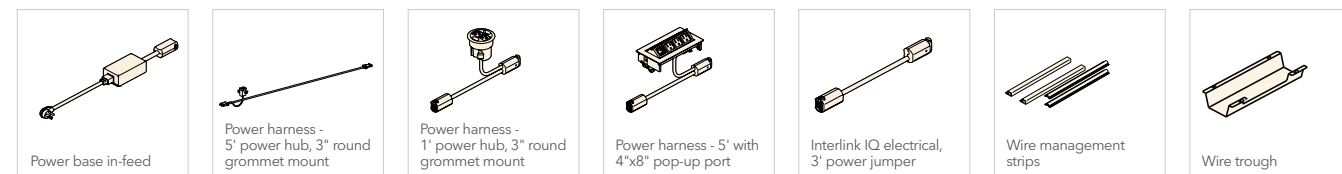


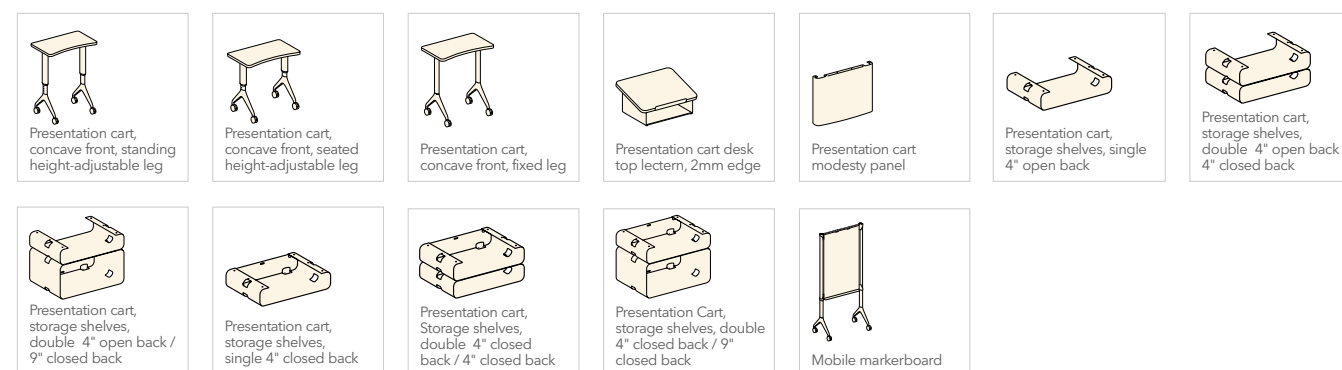
Table Accessories



Electrical/Power



Shared Components



Arm & Leg Options

Choose from a variety of options, including fixed or tablet arms, sled bases, five-star bases, and legs with casters or glides.





"On-going developments in mobile and computer technology free us from our traditional workspace. We are no longer dependent on a fixed space within the office. Thus people are choosing to work in a more open environment."

Wolfgang Deisig
Designer of Motivate

HON.

Make your space work®

The HON Company
Muscatine, IA 52761
800.833.3964 | Check out hon.com

© 2025 The HON Company, Form No. H5125 (1/25)
To view the registered and unregistered trademarks owned and used by The HON Company, visit hon.com/protected-marks. Models, upholstery and finishes are subject to change without notice.



Finishes

Paints



*Designer White



*Loft



*Muslin



Putty



Greige



Fossil



*Brownstone



*Titanium



*Charcoal



Black



Charblack



*Silver



*Platinum Metallic



Champagne Metallic



Solar Black

*Available in Textured Option

Colorwav™



Atom



Bullseye



Ember



Ion



Iris



Krypton



Regatta

Plastic Shells



Tangelo



Cherry



Lime



Calypso



Surf



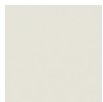
Regatta



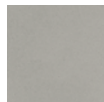
Mulberry



White



Loft



Platinum



Lava



Onyx



Shadow

Laminates



Natural Maple



Harvest



Pinnacle



Bourbon Cherry



Cognac



Shaker Cherry



Mahogany



Field Elm



Kingswood Walnut



Florence Walnut



Mocha



Sterling Ash



Designer White



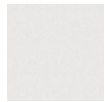
Loft



Charcoal



Black



Handspun Pearl



Handspun Dove



Handspun Chestnut



Handspun Slate



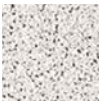
Silver Mesh



Steel Mesh



White



Gray



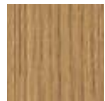
Phantom Ecru



Beigewood



Fawn Cypress



Natural Recon



Lowell Ash



Portico Teak



Skyline Walnut

See HON Pricer for complete product information.

For more information, visit hon.com/motivate