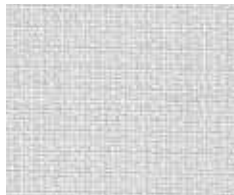
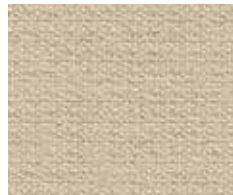


APN17 Dark Pewter



APN34 Frost



APN15 Dune



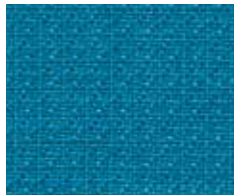
APN12 Chai



APN11 Artichoke



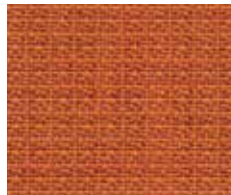
APN16 Nimbus



APN26 Turquoise



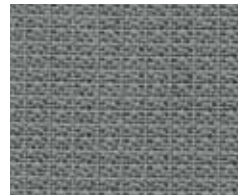
APN25 Lawn



APN29 Mandarin



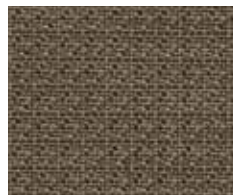
APN09 Morel



APN24 Platinum



APN27 Jet



APN22 Bronze



APN30 Cherry



APN31 Framboise



APN32 Blackberry



APN23 Espresso



APN28 Carbon

Appoint

Application	Workstations
Content	100% Polyester
Width	66"
Weight	13.6 ounces per linear yard
Flame Resistance	ASTM E-84 (Tunnel Test), Class A or 1
Maintenance	W: Clean with water based shampoo or foam upholstery cleaner
Additional Colors	For additional Appoint colors available, please visit the Surface Materials Library at hon.com .
Manufacturer	HON

ACT Registered Certification 