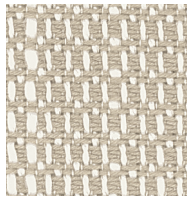
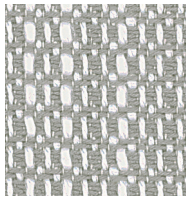


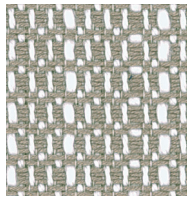
RUSH09 Mint



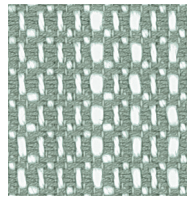
RUSH05 Sand



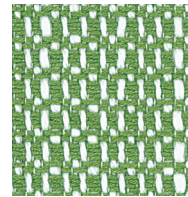
RUSH06 Greyhound



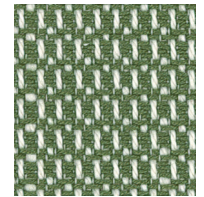
RUSH04 Tapestry



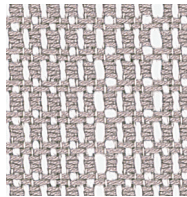
RUSH14 Sage



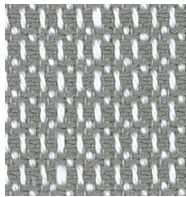
RUSH15 Greenery



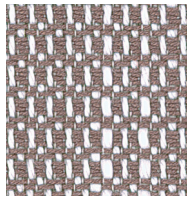
RUSH16 Basil



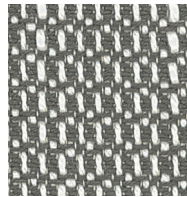
RUSH17 Vintage



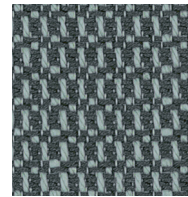
RUSH07 Anchor



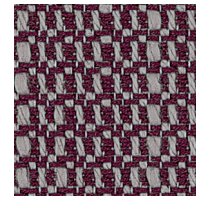
RUSH18 Mulberry



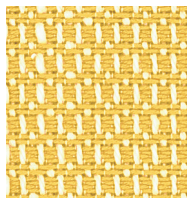
RUSH08 Seal



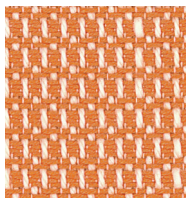
RUSH01 Pumice



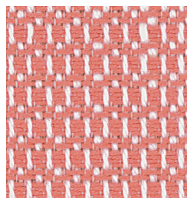
RUSH19 Merlot



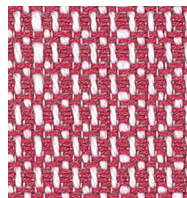
RUSH23 Sunshine



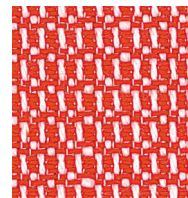
RUSH22 Tiger



RUSH20 Punch



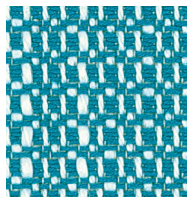
RUSH21 Flamingo



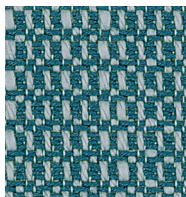
RUSH24 Salsa



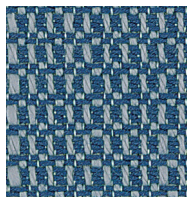
RUSH03 Stout



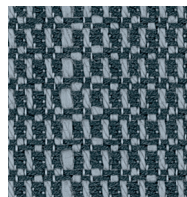
RUSH12 Wave



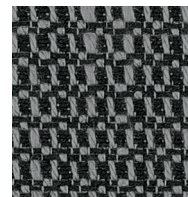
RUSH13 Marina



RUSH10 Blueberry



RUSH11 Midnight



RUSH02 Soot

Rush

Application	Chair
Content	100% Polyester
Width	56.5"
Weight	22.5 ounces per linear yard
Backing	Acrylic
Abrasion	51,000 double rubs (W)
Flame Resistance	NFPA 260 (UFAC Class 1), California TB 117-2013, Section 1 compliant, Compatible with California TB 133 (CAL 133) when ordered as an FC option.
Maintenance	WS: Clean with upholstery shampoo or mild dry cleaning solvent
Manufacturer	HON

ACT Registered Certification 