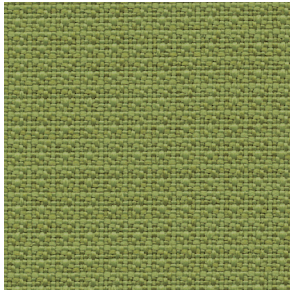
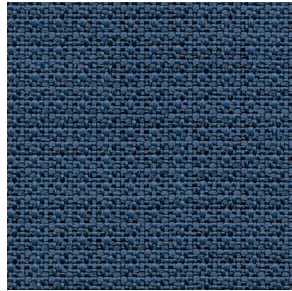


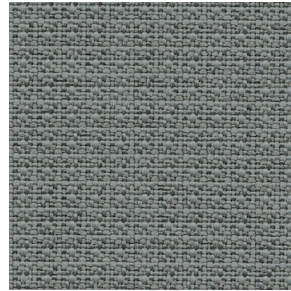
PNS006 Turquoise



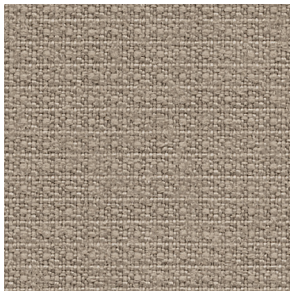
PNS005 Lawn



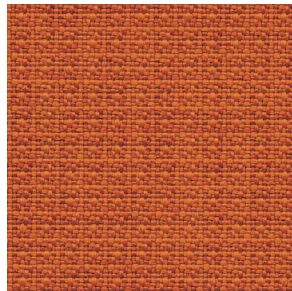
PNS007 Jet



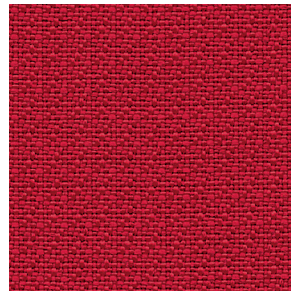
PNS004 Platinum



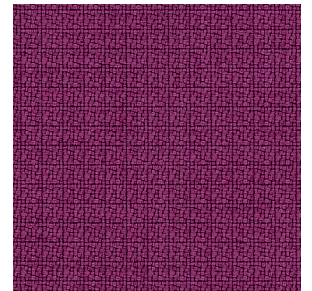
PNS001 Morel



PNS009 Mandarin



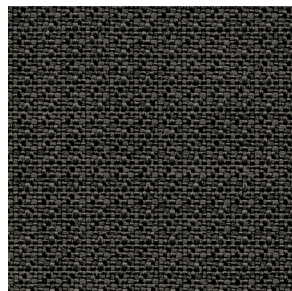
PNS010 Cherry



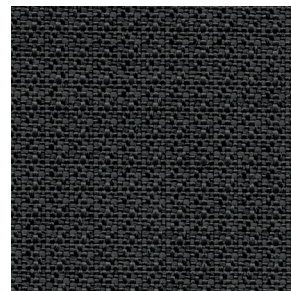
PNS011 Framboise



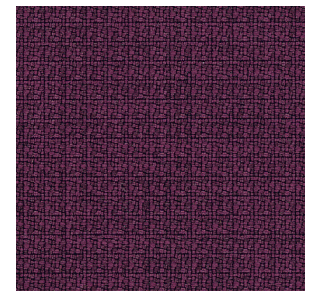
PNS002 Bronze



PNS003 Espresso



PNS008 Carbon



PNS012 Blackberry

Appoint Seating

Application	Chair
Content	100% Recycled Polyester
Width	54"
Weight	16.5 ounces per linear yard
Finish	Stain Resistant
Abrasion	200,000 double rubs (W)
Flame Resistance	NFPA 260 (UFAC Class 1), California TB 117-2013, Section 1 compliant, Compatible with California TB 133 (CAL 133) when ordered as an FC option.
Maintenance	WS: Clean with upholstery shampoo or mild dry cleaning solvent
Sustainability	Recycled Content
Manufacturer	HON

ACT Registered Certification 

Multiple factors affect fabric durability and appearance retention, including end-user application and proper maintenance. Wyzenbeek results above 100,000 double rubs have not been shown to be a reliable indicator of increased fabric lifespan.