

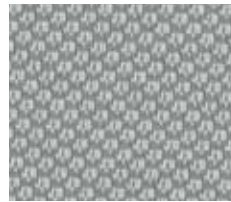
NR27 Glow



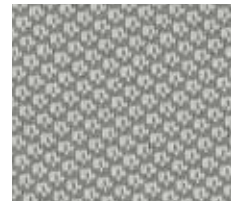
NR26 Mustard



NR82 Lime



NR22 Loft



NR23 Nickel



NR20 Shadow



NR47 Mandarin



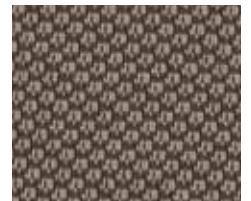
NR76 Gecko



NR96 Surf



NR90 Regatta



NR30 Meteor



NR46 Tangelo



NR75 Leaf



NR98 Calypso



NR91 Cobalt



NR49 Coffee



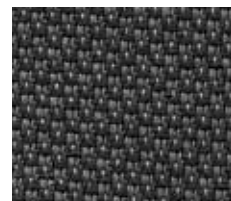
NR66 Cherry



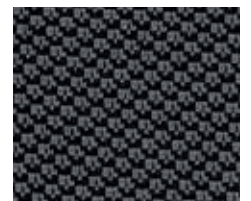
NR63 Fuchsia



NR61 Amethyst



NR19 Fog



NR10 Onyx

Inertia

| | |
|-------------------------|-------------------------------------------------------------------------------------------------------------------------------------------------|
| Application | Chair |
| Content | 100% Polyester |
| Width | 54" |
| Weight | 11.7 ounces per linear yard |
| Finish | Nanotex |
| Backing | Acrylic |
| Abrasion | 100,000 double rubs (W) |
| Flame Resistance | NFPA 260 (UFAC Class 1), California TB 117-2013, Section 1 compliant, Compatible with California TB 133 (CAL 133) when ordered as an FC option. |
| Maintenance | WS: Clean with upholstery shampoo or mild dry cleaning solvent |
| Manufacturer | HON |

ACT Registered Certification 

Additional Colorways are not represented on the card.
To see a digital representation of these colors please visit
<http://www.hon.com/Fabrics-Finishes>.
Clover NR74
Bronze NR28

HON[®] The HON Company
200 Oak Street
Muscatine, IA 52761
800.833.3964
hon.com

© 2016 The HON Company, Form No. H4756 (05/16)
HON and Nano-tex are registered trademarks.
Models, upholstery, and finishes are subject to change without notice.


NANotex[®]