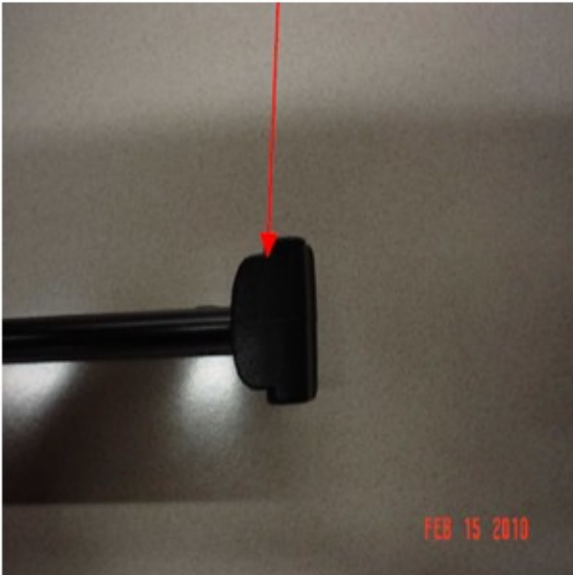


Hangrail Information: Laminate Products

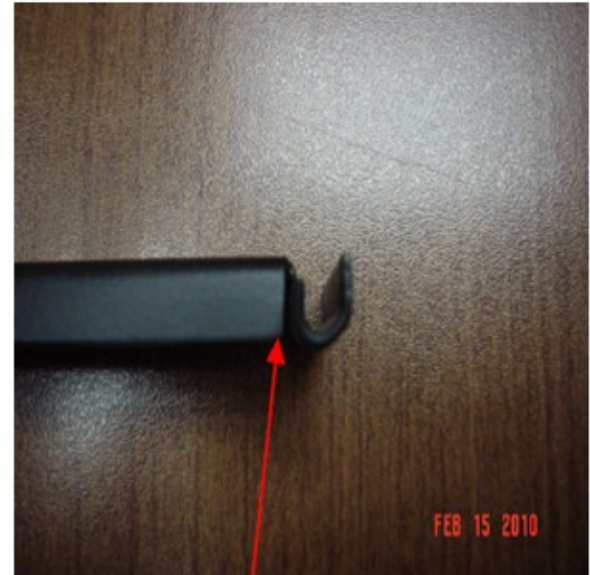
- ⇒ **'Old Style' Hangrails**—For products produced prior to 2008
 - ◆ No longer available for order
 - ◆ Possess clips on each end and are single rails (1 rail spans the width of each drawer)
 - ◆ Clips are still available for order through HON Customer Support
 - ⇒ **Current Hangrails**—For products produced after 2008
 - ◆ Do not possess clips on each end; includes 2 front-to-back and 2 side-to-side rails per each drawer
 - ◆ Front-to-back hangrails are not available for products produced before 8/1/2013
- * See your product's Serial Number label to confirm production date



Current Hangrails—
Rounded top extrusion



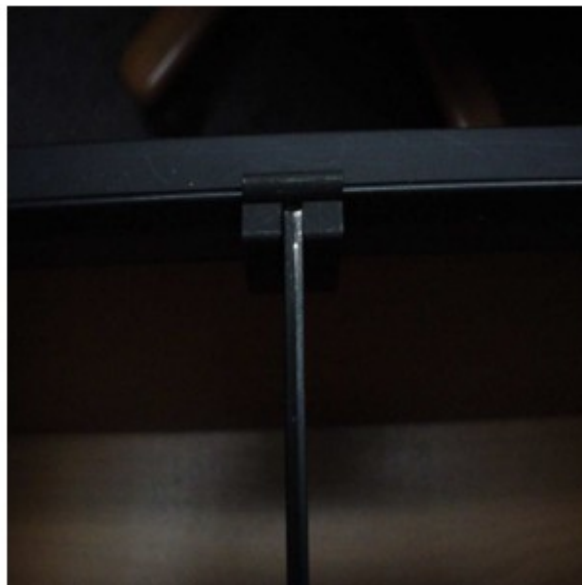
Type 1 Old Style Hangrails—
Contains a steel bar, snaps into a clip



Type 2 Old Style Hangrails—
Does not possess rounded top extrusion



Current Hangrails—
Hangrails connect to 'U' shaped mechanism within drawer side



Type 1 & 2 Old Style Hangrails—
Hangrails connect to 'h' shaped mechanism that allows user to snap into place



Current Hangrails—
Hangrails connect depth-wise



Type 1 & 2 Old Style Hangrails—
In Lateral File, hangrails connect width-wise



For assistance, contact HON Parts Customer Support at 800-336-8398