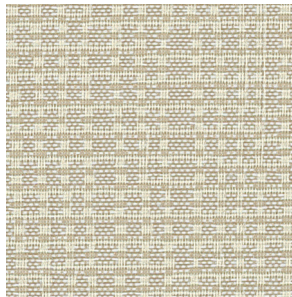
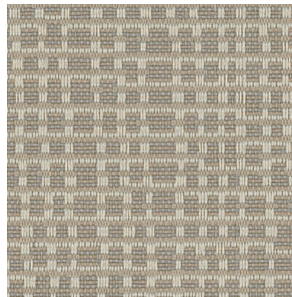


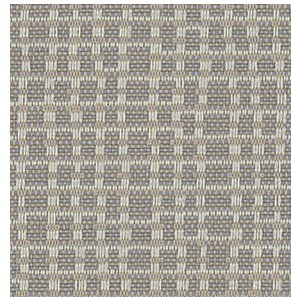
ECH10 Highlight



ECH15 Vanish



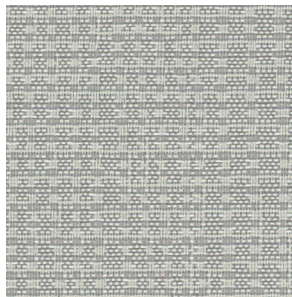
ECH14 Blend



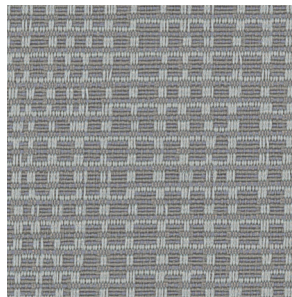
ECH16 Tonal



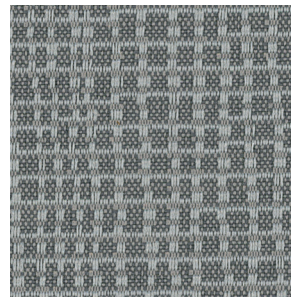
ECH09 Shade



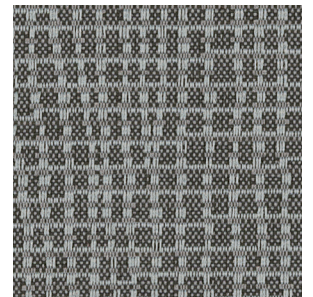
ECH08 Outline



ECH12 Cast




ECH11 Midtone



ECH13 Axis

# Etch

<b>Application</b>	Workstations
<b>Content</b>	58% Polyester, 42% Pre-Consumer Recycled Polyester
<b>Width</b>	66"
<b>Weight</b>	11.7 ounces per linear yard
<b>Flame Resistance</b>	ASTM E-84 (Tunnel Test); Class A or 1
<b>Maintenance</b>	WS: Clean with upholstery shampoo or mild dry cleaning solvent
<b>Sustainability</b>	Recycled Content
<b>Manufacturer</b>	HON

ACT Registered Certification 

Additional Colorways are not represented on the card.  
To see a digital representation of these colors please visit  
<http://www.hon.com/Fabrics-Finishes>.

Aquatint	ECH01
Engrave	ECH02
Lithograph	ECH03
Crosshatch	ECH04
Woodcut	ECH05
Intaglio	ECH06
Mezzotint	ECH07