



Laminate Desk Series Hardware Pack Location

Product:

1870 / 1890 Series Bookcases
Bookcase Hutch
End Cap Bookcase
Work Organizer
Stack-on Organizer
Printer Cart
Back Enclosure for Stack-on Storage
Reception Stations
T-Shaped End Panel

Hardware Location:

Clear plastic bag, containing all of the hardware, is taped to the top laminate panel in the carton, prior to the unit getting wrapped with shrink film.

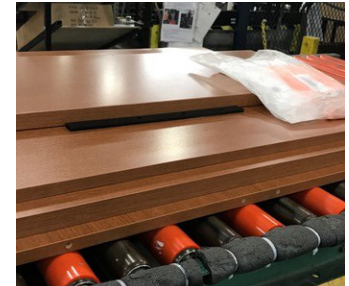


Product:

Modular Desk, Credenza, Return Shells
Peninsulas
Bridge
Corner Unit
Extended Corner Unit
Reception Desk and Return Shells
Transaction Counter for Reception Desk
Mobile Table
L-Shaped End Panel

Hardware Location:

Clear plastic bag, containing all of the hardware, is taped to the top laminate panel in the carton.



Product:

Worksurfaces

Hardware Location:

Clear plastic bag, containing all of the hardware, is positioned under flat bracket and secured to the bottom of the worksurface with screws.



Product:

End Panel
Modesty/Back Panel
Pedestal Top
Pedestal Back Panel

Hardware Location:

Placed in the corrugated end cap portion of the packaging, which is stretch-wrapped to the product.



Laminate Desk Series Hardware Pack Location Cont.

Product:
Bookcases
Bookcase Hutch
Bookcase End Support

Hardware Location:
Clear plastic bag, containing all of the hardware, is placed on the bottom shelf.



Product:
Storage Cabinet/Lateral File
Storage/File Cabinet
Storage Tower

Hardware Location:
Clear plastic bag, containing all of the hardware, is placed on the bottom drawer.



Product:
Wardrobe/Storage Cabinet
Storage Cabinet (>29-1/2"H)
Wardrobe/Bookcase
Bookcase with Coat Hooks

Hardware Location:
Clear plastic bag, containing all of the hardware, is placed on the bottom shelf.



Product:
3-Drawer Lateral File
4-Drawer Lateral File
Storage Tower (50"H)
Modular Standing-Height Pedestal

Hardware Location:
Clear plastic bag, containing all of the hardware, is placed in the bottom drawer.



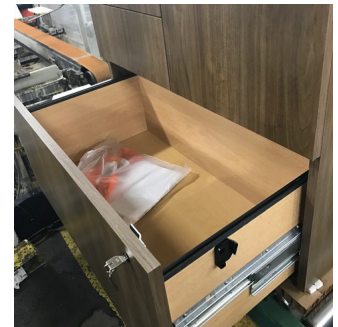
Product:
Storage Cabinet (29-1/2”H)
Modular Storage Cabinet Pedestal
Modular Bookcase Pedestal

Hardware Location:
Clear plastic bag, containing all of the hardware, is placed on the bottom shelf.



Product:
Low Credenza
Mobile Pedestal (30W)
Modular Lateral File Pedestal
Modular Multi File Pedestal

Hardware Location:
Clear plastic bag, containing all of the hardware, is placed in the bottom drawer.



Product:
Stack-on Storage (partially assembled)
Wall Mount Storage
Wall Mount Shelves
Bookcase Hutch with Laminate Doors
Bookcase Hutch with Frosted Doors

Hardware Location:
Clear plastic bag, containing all of the hardware, is placed on the shelf of the unit.



Product:
Stack-on Storage

Hardware Location:
Clear plastic bag, containing all of the hardware, is placed on the shelf of the unit.



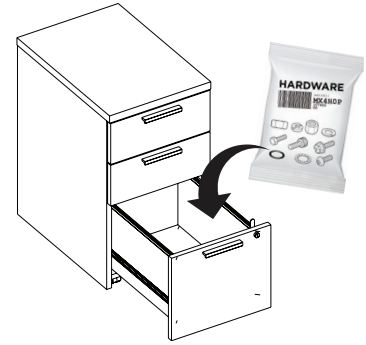
Laminate Desk Series Hardware Pack Location Cont.

Product:

Modular Pedestal (B/F, B/B/F, F/F)
Mobile Pedestal (B/F, S/B/F, B/B/F, F/F)

Hardware Location:

Clear plastic bag, containing all of the hardware, is placed in the bottom drawer of the unit.



Product:

Desks
Credenzas
Returns
2-Drawer Lateral Files

Hardware Location:

Clear plastic bag, containing all of the hardware, is placed in the bottom drawer of the unit.



WHERE TO FIND...

Adjustable Leveling Glides

Now shipped attached to - installed on - Laminate Casegoods products.

Cord Management Grommets (Modesty Panels)

Installed and secured with tape on credenzas and returns that ship assembled. For products requiring assembly, such as shells, bridges, and modular component modesty / back panels, the grommet parts are in the hardware bag.

Cord Management Grommets (Tops / Worksurfaces)

Installed on product. Taped in place.

Cover Caps for Fasteners

On units that ship assembled, a cap is applied over of every visible cam-lock fastener prior to shipment. For products requiring assembly, the cover caps are individually packaged and included inside the hardware master bag.

Handles

Decorative handle locations vary by product type. On desks, credenzas, and returns, the handles ship attached to the inside of the drawer front. The only exception is the Canopy design, where the handles and screws are in the same individual package, which is part of the master hardware bag. On modular and mobile pedestals, lateral files, cabinets, wardrobes and towers, the handle and screw pack is included in the master hardware bag.

Hangrails for File drawers

Installed on product. Perimeter rails are integral to the drawer. Cross-rails are attached to the perimeter hangrails.

Locks / Keys

Taped to exterior of unit; generally hanging off the top or to a drawer front.

Reveals

Installed on "built-up" (assembled) units.

Taped to end panel(s) on products requiring assembly.