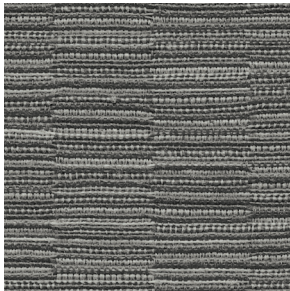


A182 Ivy



A119 Lithium



A126 Taupe



A176 Fatigue



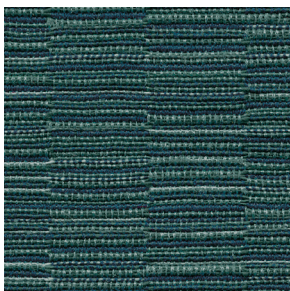
A142 Blaze



A162 Crimson



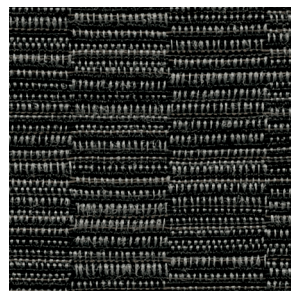
A149 Sable



A196 Turquoise



A190 Blue Lagoon



A110 Onyx

Attire

Application	Chair
Content	62% Polyester, 38% Recycled Polyester
Width	54"
Repeat	2½" V x 5" H
Weight	16.6 ounces per linear yard
Backing	Acrylic
Abrasion	30,000 double rubs (W)
Flame Resistance	NFPA 260 (UFAC Class 1), California TB 117-2013, Section 1 compliant, Compatible with California TB 133 (CAL 133) when ordered as an FC option.
Maintenance	W: Clean with water based shampoo or foam upholstery cleaner
Notes	Gathers and creases may be more visible due to the inherent design and construction of the fabric.
Sustainability	REPREVE®
Manufacturer	HON

ACT Registered Certification 

HON®
The HON Company
200 Oak Street
Muscatine, IA 52761
800.833.3964
hon.com

© 2016 The HON Company, Form No. H4569 (01/16)
Repreve is a trademark of Unifi, Inc. and is registered with U.S. Patent and Trademark office and with others.
Models, upholstery, and finishes are subject to change without notice.

REPREVE®
RECYCLED FIBER BY UNIFI
WWW.REPREVE.COM
Repreve® - 100% recycled fiber.
Made responsibly. To make a difference.