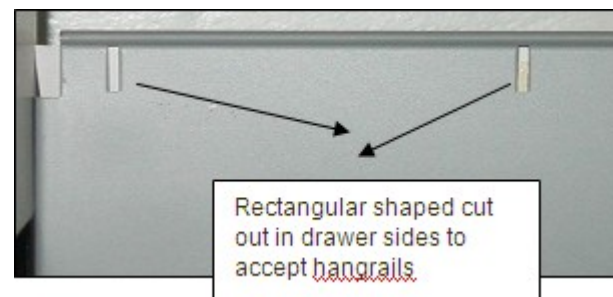
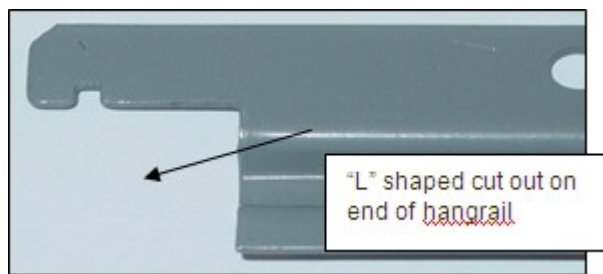


# Hangrail Information: Steel Lateral Files



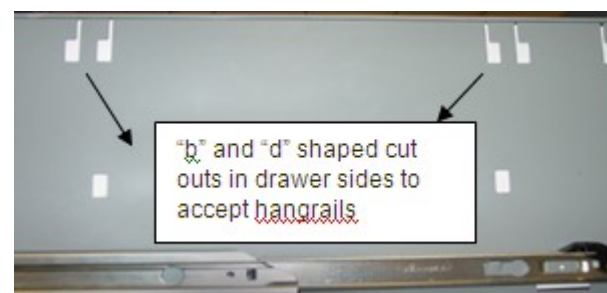
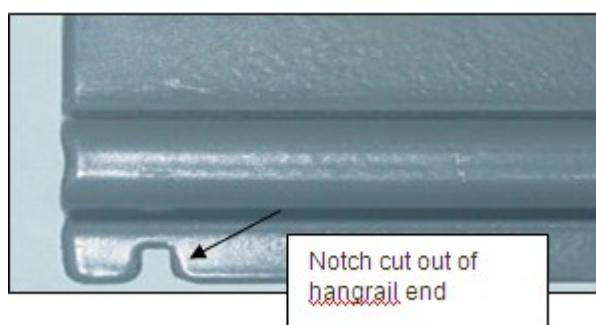
## ⇒ 'Old Style' Hangrails

- ◆ Used on all HON lateral files produced before April of 1994  
**(See your product's Serial Number label to confirm production date)**
- ◆ The ends of the hangrails are shaped like the letter 'L' (Image above)
- ◆ The slots in sides of drawers produced before April of 1994 accept this end and are a thin rectangular shape
- ◆ For pricing and availability of Old Style hangrails, contact HON Parts Customer Support



## ⇒ Current Hangrails

- ◆ Used on all HON lateral files produced after April of 1994 **(See your product's Serial Number label to confirm production date)**
- ◆ The ends of the hangrails are solid and have a small notch to fit in drawer slots
- ◆ The slots in the sides of drawers that accept these rails are lowercase 'b' and 'd' shaped
- ◆ Current hangrails are available for order through HON Parts Customer Support



**For assistance, contact HON Parts Customer Support at 800-336-8398**