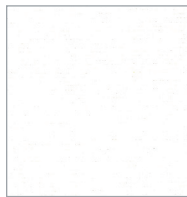
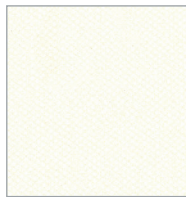


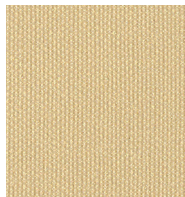
SX01 Marine Blue



SX06 Ice



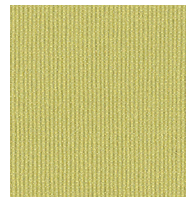
SX07 Cream



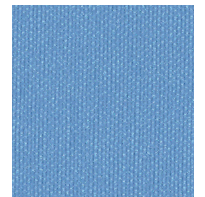
SX08 Champagne



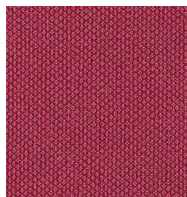
SX18 Sage



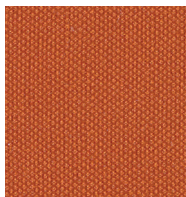
SX19 Celery



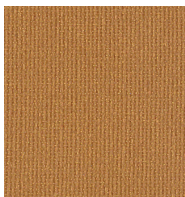
SX02 Lagoon



SX15 Borscht



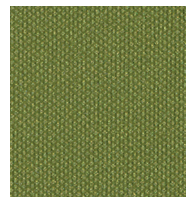
SX11 Mandarin



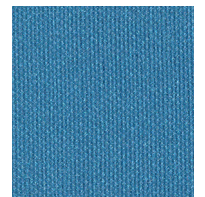
SX10 Chestnut



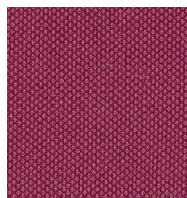
SX09 Taupe



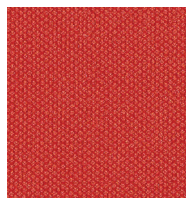
SX20 Basil



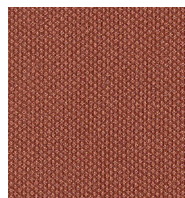
SX03 Turquoise



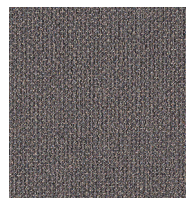
SX16 Raspberry



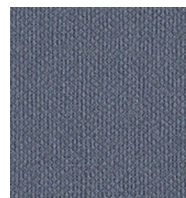
SX12 Poppy



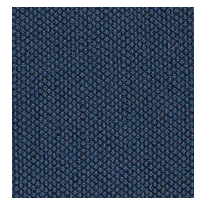
SX14 Umber



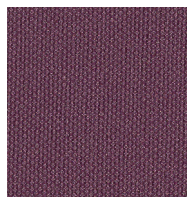
SX24 Meteor



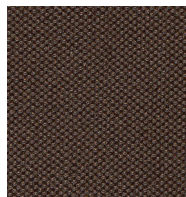
SX22 Storm



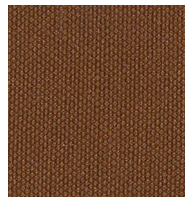
SX05 Jet



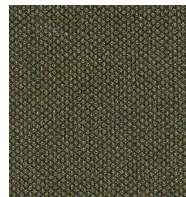
SX17 Blackberry



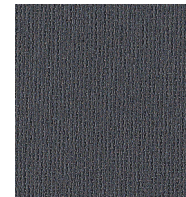
SX25 Mocha



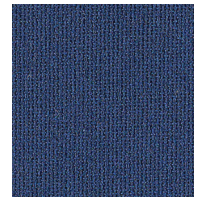
SX13 Luggage



SX21 Bottle



SX23 Carbon



SX04 Sapphire

Silvertex™ Vinyl

Application	Chair
Content	100% Vinyl
Width	54"
Weight	30 ounces per linear yard
Finish	PERMABLOCK ³ ®, SILVERGUARD®
Backing	Hi-Loft ^{2™} 100% Polyester
Abrasion	100,000 double rubs (W)
Flame Resistance	NFPA 260 (UFAC Class 1), California TB 117-2013, Section 1 compliant, Compatible with California TB 133 (CAL 133) when ordered as an FC option.
Maintenance	Care and Cleaning Guide Step 1: eye shadow, mascara, grease, black felt tip pen, crayon, chocolate, and suntan lotion Step 2: red lipstick Step 3: blood, urine, feces, oil base paint, tar and asphalt Steps 4 & 5: all other tough stains Step 1: Remove excess spill with a damp cloth. Clean with a 1:1 mix of Ivory [®] liquid and water. Next, rinse with clean water and dry. Step 2: Use a straight application of concentrated cleaners such as Formula 409 [®] or Fantastik [®] spray cleaner. Wipe with a clean cloth, rinse with clean water, and dry. Step 3: Use a 1:1 mix of ammonia and water, or a 1:4 mix of bleach and water. Rinse with clean water and dry. Step 4: Use a straight application of naphtha (lighter fluid). Rinse thoroughly with clean water and pat surface dry. Step 5: Use a 1:1 mix of isopropyl alcohol and water. If the stain persists, use straight alcohol. Rinse thoroughly with clean water and pat dry. Note: For cleaning that requires step 4 or 5, use a soft cotton cloth saturated with the cleaning material and rub the stain in circles 10 times. Pat dry with another soft cotton cloth and check the results.
Manufacturer	HON

ACT Registered Certification 

Additional Colorways are not represented on the card.
To see a digital representation of these colors please visit
<http://www.hon.com/Fabrics-Finishes>.

Neutra	SX30
Marsh	SX31
Bronze	SX32
Crème de Menthe	SX33
Acid	SX34
Peat	SX35
Bazaar	SX37
Imperial	SX38
Plata	SX39
Sterling	SX40
Zest	SX41
Limoncello	SX42

HON®

The HON Company
200 Oak Street
Muscatine, IA 52761
800.833.3964
hon.com

© 2016 The HON Company, Form No. H4779 (06/16)
Permablok³ and Silverguard are registered trademarks and
Hi-Loft² and Silvertex are trademarks of Spradling, Inc.
Models, upholstery, and finishes are subject to change without notice.

PERMABLOK³®
ADVANCED VINYL PROTECTION

Ag SILVERGUARD®
SILVER ION TECHNOLOGY

Silvertex is treated with SILVERGUARD Silver Ion Technology, which provides a natural bacteria-fighting defense that inhibits odor- and stain-causing bacteria. When combined with PERMABLOK³, Spradling's patented stain-fighting and abrasion-resistant treatment, also featured in Silvertex, SILVERGUARD delivers the ultimate performance solution.