



Healthy Schools

Table Of Contents

- Material Cleaning**.....4
- Palette Cards**.....5
- Student Health**.....6
- Administration**.....8
- Classrooms**.....10
- Common Areas**.....12
- Quickship Solutions**.....18
- Rely on HON**.....22

EXPANDING THE POTENTIAL FOR LEARNING

Keeping pace with technological advancements and changes in generational preferences means that education practices and facilities can't remain stagnant. With a well-rounded portfolio of products designed to support the shift in how students learn and connect with others, HON delivers spaces that help students, faculty and administrators achieve their full potential.



Classrooms

Student Health

Administration

Common Areas

Product Cleanability

Our wide variety of durable, cleanable finishes provide the right finishing touch to any space. Go to hon.com/HealthySchools to learn more about how to clean them and all of the options.



COVID-19 Disinfection: For disinfecting hard surfaces against the COVID-19 virus the CDC recommends using diluted household bleach solutions (minimum 1/3 cup of bleach for every gallon of water, or a 2% bleach solution) or isopropyl alcohol solution (minimum 70% isopropyl). Concentrations for bleach disinfecting solutions for mesh are noted below and for specific textiles, on page 2 of this document.

Cleaning Instructions for Hard Surfaces and Textiles: Leave cleaning solution on for at least 30 seconds but no longer than 2 minutes. Thoroughly remove the solution from the surface with a clean cloth and warm water. This process may cause discoloration if left on the surface longer than suggested time or not removed after sanitizing.

The following surface materials can be cleaned in this manner:

- 1 Vinyl**
1:10 Diluted Bleach and Water
- 2 HPL/TFL/Edgeband/T-Mold/Glass/Plastics**
5 tablespoons (1/3rd cup) bleach per gallon of water or 4 teaspoons of bleach per quart of water
- 3 Poly Shell Seating**
Apply warm water and mild soap or ammonia-based foam glass cleaner solution to a clean, lint-free microfiber cloth.
- 4 Powder Coated Metal Painted MDF**
Apply a small amount of nonabrasive cleaner such as Windex®, Formula 409®, or Fantastik® to a clean, dry, lint-free microfiber cloth or paper towel.



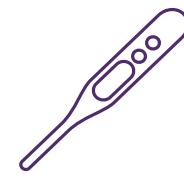
Passing With Flying Colors

The impact of color on mood and behavior has long been studied by color psychologists, scientists, and design professionals, who have concluded that color elicits distinct neurological and biochemical responses in humans. Luckily you don't have to choose between color and cleanability. HON has a wide variety of finishes that allow you to do both.



Student Health

A safe environment begins at the front door. Set up indoor or outdoor temperature check stations to start your day with peace of mind. HON's health check station provides faculty & administrators the flexibility and support needed to quickly assess students as soon as they enter the building.



Nurses' Office and Isolation Area

Our solutions provide support for your schools' health needs throughout the day. Ensure your Nurse's office is fully equipped to address the daily needs of your students. In an effort to keep your school community healthy, provide a dedicated space to care for those students exhibiting symptoms.



Featured Product:

- Verse® Panels
- SmartLink™ Value Mobile Storage
- Hand Sanitizer stand
- Olson® Stack Chair
- Motivate® High Density Stack Chair
- Motivate® Mobile Presentation Cart
- SmartLink® Task Chair
- Soothe® Benches



Administration

Front office areas and administrative spaces function as the nerve center for a school and set the tone within the community concerning the school's brand and culture. These spaces need to be designed to maximize productivity and ensure the daily operations continue to run smoothly.

Featured Product:

Front Office

Abound® Panels
Grove® Lounge Seating
Ignition® Task Seating

Admin Private Office

10500 Series™
Voi®
Ignition® Task Seating
Ignition® Guest Chair

Storage

Flagship®



Classrooms

Teachers will be challenged to find ways to incorporate collaboration while maintaining adequate social distancing between students. Those that support a variety of teaching styles know young learners thrive within adaptive environments. HON provides furniture solutions that can be arranged and rearranged to create a collaborative and healthy learning environment that addresses the needs of today and can adapt to meet those of the unpredictable future.



Featured Product:

Student Desk
SmartLink™

Student Seating
SmartLink™
Motivate® Seating
Motivate® Seating with Tablet Arm

Teacher Desk
Motivate® Mobile Presentation Cart
SmartLink™ Mobile Teacher Desk

Teacher Seating
SmartLink™ Task Stool
SmartLink™ Task Chair

Storage
SmartLink™

Accessories
Backpack Hook
Bin Book Box
Wire Storage Basket
Empower® Screens
Hand Sanitizer Stand



Common Areas

Multipurpose spaces can be used in creative ways to add additional safe, teachable space. Reconfigure your libraries, cafeterias, and media centers to better accommodate for space between students, or completely re-purpose the room for additional classroom learning. Flexible furniture that can be easily rearranged, make these spaces truly multipurpose.



Featured Product:

Tables
Motivate®
Preside® Collaborative Table

Seating
Motivate® 4-leg Stack Chair
Motivate® High Density Stack Chair
Skip® Seating

Space Division
Verse®

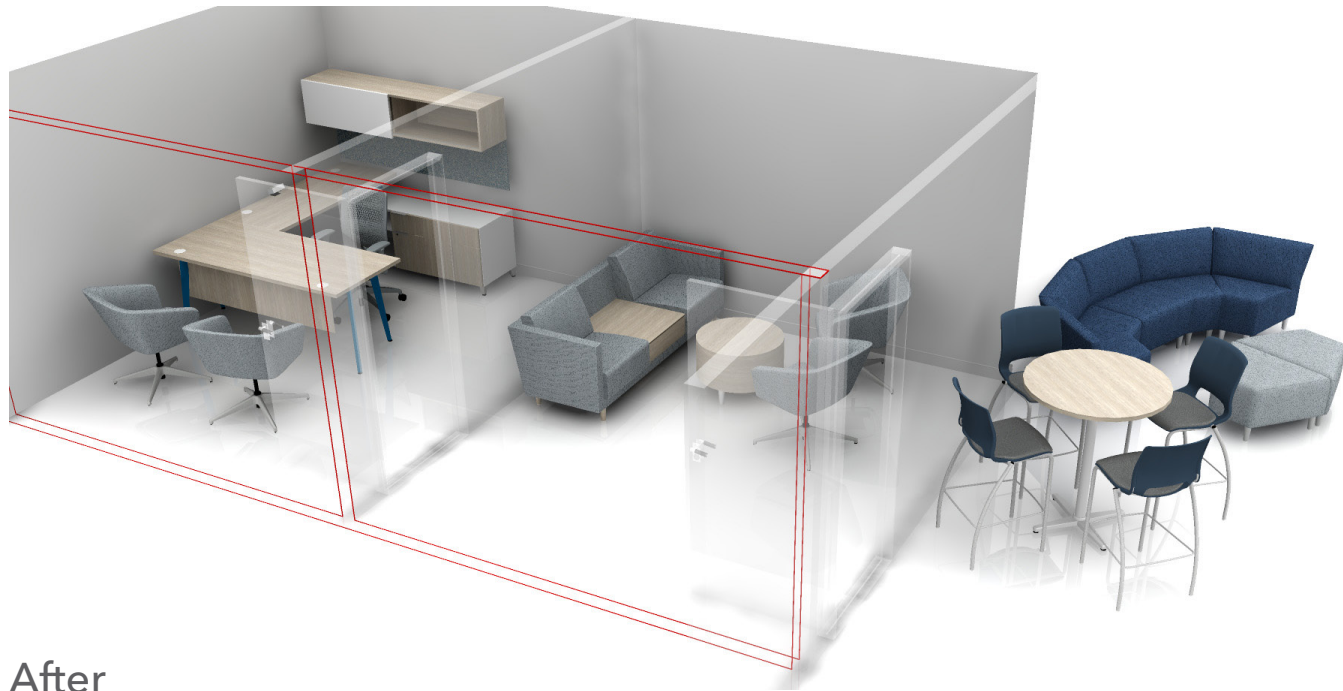
Accessories
Motivate® Mobile Marker Boards
Empower® Screens
Hand Sanitizer Stand

Questions about where to start?

Updating your classroom and administration spaces to fit today's needs can be done with a minor changes. Here are a few before and after examples. Contact our experts for help designing a safe space that works for your school.

Administration

Before



After



Reach out to your local HON representative for additional information & more idea starters.

Media Center

Before



After



Classrooms

Before



After



Classrooms

Before



After



SEATING

HON NOW Learning Solutions

HON has the right solutions to support the immediate needs of students and staff with flexibility built in so you can adapt for the unpredictable future

DESKS

Learning SOLUTIONS Delivered in Days



\$583
LIST PRICE*

SmartLink® 18" Chair

HSS4L-18B.E.ON.PLAT

- One-piece plastic design is easy to clean
- 4-leg design
- Shell color is Onyx
- Ships 4 per carton

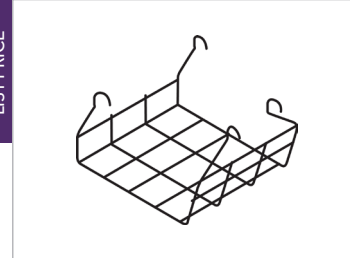


\$583
LIST PRICE*

SmartLink® 18" Chair

HSS4L-18B.E.RE.PLAT

- One-piece plastic design is easy to clean
- 4-leg design
- Shell color is Regatta
- Ships 4 per carton



\$138
LIST PRICE*

Wire Chair Basket

HSSA-WB1618

- Keep books and personal items off the ground and neatly tucked away
- Can be retrofit on existing HON SmartLink student chairs
- Easy to install
- Ships 4 per carton



\$606
LIST PRICE*

SmartLink® Triangle Desk

HLDV-M3A.E.G1.T1

- White Hard Plastic Top
- Platinum Metallic Adjustable Legs
- Height adjust from 23"-33"
- Ships 2 per carton



\$606
LIST PRICE*

SmartLink® Rectangle Desk

HLDV-MRECT2026A.E.G1.T1

- White Hard Plastic Top
- Platinum Metallic Adjustable Legs
- Height adjust from 23"-33"
- Ships 2 per carton



\$281
LIST PRICE*

SmartLink® Task Chair

HSSTK-18B.H.ON

- One-piece plastic design is easy to clean
- Seat adjusts 16"-21"
- 5-star base with wheels
- Shell color is Onyx



\$378
LIST PRICE*

SmartLink® Task Stool

HSSTK-18B.H.ON

- One-piece plastic design is easy to clean
- Seat adjusts 22"-32"
- Adjustable footring
- 5-star base with wheels
- Shell color is Onyx

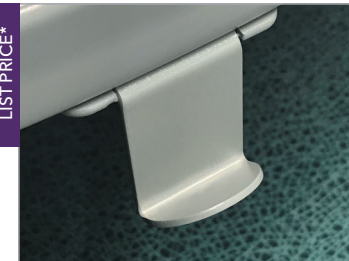


\$634
LIST PRICE*

Solve® Task Chair

HSLVTMR.Y1.A.H.TI.UR10.NL.SB.TI

- ReActiv® back design
- Easy to clean Contourett vinyl material shown in Black
- Adjustable seat height
- Adjustable arm height
- 5-star base with wheels

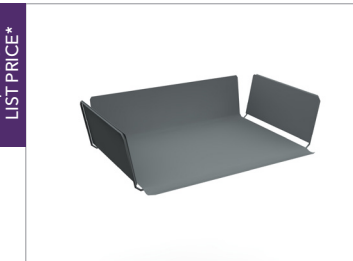


\$94
LIST PRICE*

Backpack Hook

HCLA65.X

- Keep back packs off the ground and out of the way
- Retrofit on certain desks and tables
- Easy to install
- Ships 10 per carton



\$258
LIST PRICE*

Storage Book Box

HLDA-15.T1

- Keep students materials tidy and close by
- Retrofit on certain desks and tables
- Easy to install
- Ships 4 per carton



\$454
LIST PRICE*

Flock® Round Mini

HFLY01.H.UR10

- Easy to clean Contourett vinyl material shown in Black
- Four wheels



\$454
LIST PRICE*

Flock® Round Mini

HFLY01.H.UR96

- Easy to clean Contourett vinyl material shown in Ocean
- Four wheels



\$1,391
LIST PRICE*

SmartLink® Teacher's Desk

HLTV2460T-3.B9.K.T1

- Collaborative D-Top
- Box/Box/File storage
- Locking drawers & wheels
- 60"W x 24"D

*See Dealer for specific invoice price.

Product availability is subject to change based on stock.

Contact your Dealer or HON Sales Representative for more details.

Products on this Page



*See Dealer for specific invoice price.

Product availability is subject to change based on stock.

Contact your Dealer or HON Sales Representative for more details.

Products on this Page





\$1,188
LIST PRICE*

Motivate® Mobile Podium

- HMVPCA1-1830G.C.B9.P.BLCK
- Ratchet style adjustment from 27½"-34½"
 - Four locking wheels
 - Top color is Silver Mesh



\$199
LIST PRICE*

Storage Shelves for Motivate® Mobile Podium

- HMVPCSS-4C4C.BLCK
- Two 4" closed back storage shelves
 - Companion piece to mobile podium (HMVPCA1-1830G)



\$2,683
LIST PRICE*

Motivate® Markerboard

- SPLH-MOTV-MKBD.M501973
- Easy to clean surface
 - Collaborative tool as well as mobile space division
 - 48"W x 72"H



\$1,645
LIST PRICE*

SmartLink® Mobile Storage with Bins

- HLVMSC4330R.LT1
- Easy to clean plastic bins
 - Two locking casters
 - 10 bins included; (4) 3"H bins, (4) 6"H bins and (2) 12"H bins
 - 18"D x 30"W x 42¼"H

Looking to fulfill an Administrative or Common area?

HON NOW offers furniture for those spaces and it can be delivered in days. For more details on our full offering and delivery timelines reach out to your Dealer or HON Sales Representative.

Products on this Page



*See Dealer for specific invoice price. Product availability is subject to change based on stock. Contact your Dealer or HON Sales Representative for more details.



\$256
LIST PRICE*

Hand Sanitizer Station

- HHC-SANSTND.P8T
- Freestanding design provides flexibility to add sanitizing stations anywhere
 - Stand is compatible with most manufacturers' automatic hand sanitizer dispensers
 - Ideal for high-traffic areas
 - Metal base for added stability
 - 54"H



Coming Soon!

Acrylic Screen

- Coming Soon!
- For use on all worksurfaces
 - Clear acrylic
 - Screens mount by using double stick tape, which provides the ability to mount to any surface
 - Minimum mounting clearance on top of worksurface at each bracket location is 3"Wx1½"D



Coming Soon!

Plexi-Glass Screen

- Coming Soon!
- Unit is freestanding and does not need to be fixed to any surface
 - Clear plexiglass with black plexiglass base
 - Optional 20"Wx12"H pass through opening on select sizes
 - Easy to assemble, no tools required



\$321
LIST PRICE*

Arm Pull

- HHC-ARMPULL5.(specify paint)
- Attaches to any door allowing for hands-free entrance and exit
 - Mounting hardware included
 - Durable 10-gauge steel
 - Comes in Black (P6P) or Titanium (P8V)
 - Ships 5 per carton



\$900
LIST PRICE*

Arm Pul

- HHC-ARMPULL15.(specify paint)
- Attaches to any door allowing for hands-free entrance and exit
 - Mounting hardware included
 - Durable 10-gauge steel
 - Comes in Black (P6P) or Titanium (P8V)
 - Ships 15 per carton



\$321
LIST PRICE*

Foot Pull

- HHC-FOOTPULL5.(specify paint)
- Attaches to any door allowing for hands-free entrance and exit
 - Mounting hardware included
 - Durable 10-gauge steel
 - Comes in Black (P6P) or Titanium (P8V)
 - Ships 5 per carton



\$900
LIST PRICE*

Foot Pull

- HHC-FOOTPULL15.(specify paint)
- Attaches to any door allowing for hands-free entrance and exit
 - Mounting hardware included
 - Durable 10-gauge steel
 - Comes in Black (P6P) or Titanium (P8V)
 - Ships 15 per carton

Have more time?

Visit the HON's full Learning product offering at www.hon.com/industry/healthy-school-solutions

*See Dealer for specific invoice price. Product availability is subject to change based on stock. Contact your Dealer or HON Sales Representative for more details.

Rely On HON

In an ever-changing environment, we're here for you.

At HON, we know that education and the way you teach is ever changing. We are committed and ready to respond to those changes.

Whether you need a solution for today's needs or planning for the future, we're ready to help.

No matter the need, we can assist you in furnishing any education environment with our comprehensive product offering that supports you, your administration and your students. We've got this. So you can focus on what really matters.

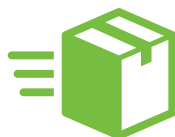


Full Lifetime Warranty



Invest with confidence

On Time



Best-in-Class logistics to get it to you when and where you need it

Durable Product



Our products are made to hold up for the long haul with our durable design, put through rigorous testing standards