

Everyday Textures

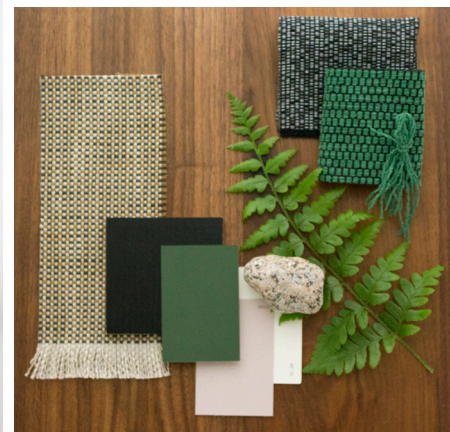
HBF
TEXTILES



At HBF Textiles, we reveal the hand of the maker and the intentionality of design in everything we produce. Our finely crafted materials are an invitation to touch and explore.

Everyday Textures

by HBF Textiles





HBF Textiles & Sustainability

We approach sustainability from a variety of methods.

At the forefront of the charge is the utilization of rapidly renewable and recycled fibers. Our Everyday Textures incorporate cotton, post-consumer recycled polyester (the source of which is primarily plastic water bottles or PET bottles), and post-industrial recycled polyester.

Our goal at HBF Textiles is to reduce the amount of finishing on a fabric through the engineering of weaves structures and the use of solution dyed yarns which can lessen the need for additional chemical treatments.

The Everyday Textures are Healthier Hospitals (HH) V2 compliant and SCS Indoor Advantage™ Gold certified.



Blink 1048

APPLICATION Upholstery
CONTENT 62% post-consumer recycled polyester, 38% polyester
WIDTH 57" W
BACKING Acrylic
ABRASION 75,000 double rubs (Wyzenbeek)
FR RATING California TB 117-2013 Section 1 (Pass)
MAINTENANCE WS: Clean with upholstery shampoo or mild dry cleaning solvents. Diluted bleach solutions up to 20% for cleaning difficult stains.
SUSTAINABILITY 62% recycled content. Third party certified, SCS Indoor Advantage™ Gold



Checkmate 1043

APPLICATION Upholstery
CONTENT 94% polyester, 4% post-industrial recycled polyester, 2% post-consumer recycled polyester
WIDTH 56" W
BACKING Acrylic
ABRASION 63,000 double rubs (Wyzenbeek)
FR RATING California TB 117-2013 Section 1 (Pass)
MAINTENANCE WS: Clean with upholstery shampoo or mild dry cleaning solvents. Diluted bleach solutions up to 20% for cleaning difficult stains.
SUSTAINABILITY 6% recycled content. Third party certified, SCS Indoor Advantage™ Gold.



Look-see 1044

APPLICATION Upholstery
CONTENT 52% polyester, 31% post-industrial recycled polyester, 17% post-consumer recycled polyester
WIDTH 56" W
BACKING Acrylic
ABRASION 100,000 double rubs (Wyzenbeek)
FR RATING California TB 117-2013 Section 1 (Pass)
MAINTENANCE WS: Clean with upholstery shampoo or mild dry cleaning solvents. Diluted bleach solutions up to 20% for cleaning difficult stains.
SUSTAINABILITY 48% recycled content. Third party certified, SCS Indoor Advantage™ Gold



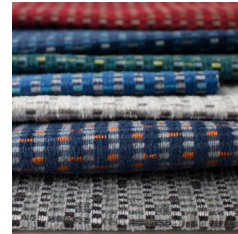
Poppy 1047

APPLICATION Upholstery
CONTENT 48% cotton, 37% post-consumer recycled polyester, 15% post-industrial recycled polyester
WIDTH 56" W
BACKING Acrylic
ABRASION 60,000 double rubs (Wyzenbeek)
FR RATING California TB 117-2013 Section 1 (Pass)
MAINTENANCE S: Clean with water free dry cleaning solvent
SUSTAINABILITY 48% rapidly renewable content, 52% recycled content. Third party certified, SCS Indoor Advantage™ Gold



Walkabout 1046

APPLICATION Upholstery
CONTENT 41% polyester, 38% post-industrial recycled polyester, 21% post-consumer polyester
WIDTH 56" W
BACKING Acrylic
ABRASION 63,000 double rubs (Wyzenbeek)
FR RATING California TB 117-2013 Section 1 (Pass)
MAINTENANCE WS: Clean with upholstery shampoo or mild dry cleaning solvents. Diluted bleach solutions up to 20% for cleaning difficult stains.
SUSTAINABILITY 59% recycled content. Third party certified, SCS Indoor Advantage™ Gold



Zippy 1045

APPLICATION Upholstery
CONTENT 79% polyester, 21% post-consumer recycled polyester
WIDTH 57" W
REPEAT 5 1/2" V x 2 1/2" H
BACKING Acrylic
ABRASION 51,000 double rubs (Wyzenbeek)
FR RATING California TB 117-2013 Section 1 (Pass)
MAINTENANCE WS: Clean with upholstery shampoo or mild dry cleaning solvents. Diluted bleach solutions up to 20% for cleaning difficult stains.
SUSTAINABILITY 21% recycled content. Third party certified, SCS Indoor Advantage™ Gold

