

HON

Make your space work®

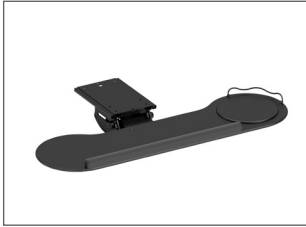


Keyboard Trays

Workplace Tools

Keyboard Trays

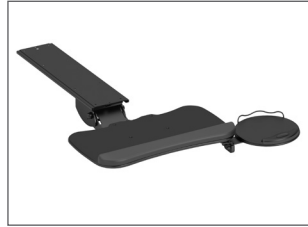
SHORT TRACK & KEYBOARD PLATFORM



HKTSHORT

- Secondary slide & unique arm design provide a small footprint
- Full retraction with 8" track
- No-knob, spring-assisted height adjustment
- 6 3/8" total height adjustment range (1 1/8" above; 5 1/4" below the worksurface)
- Positive tilt lockout

MID TRACK WITH KEYBOARD AND MOUSE PLATFORM



HKTMID

- Soft-touch wheel adjusts tilt with each turn (+10°/-20°).
- Counterbalance spring helps offset keyboard weight during height adjustments
- 8" total height adjustment range (3" above; 5" below the worksurface)
- No knob, lever, or ratchet handle required to set height; simply lift to desired position and release
- 21" track included

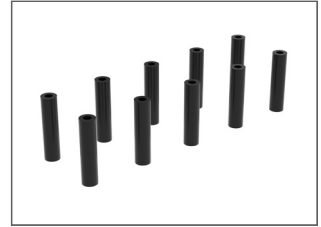
SIT TO STAND LONG TRACK WITH KEYBOARD AND MOUSE



HKTLONG

- 12.5" of travel to accommodate users in seated or sit-to-stand applications
- Provides maximum flexibility of tilt (+10°/-20°)
- 360° rear swivel for optimal keyboard tray positioning
- Slim profile allows for maximum knee clearance when in use or retracted
- Closed-channel design provides maximum keyboard stability for a solid, quality feel

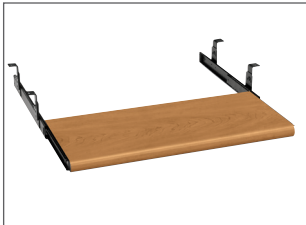
KEYBOARD SPACERS



HKBS

- For use when attaching a keyboard tray to Coordinate™ height adjustable bases, Empower height adjustable benching, and worksurfaces with an external channel
- Spacers are 3/4"W x 2 1/8"H

LAMINATE KEYBOARD TRAY



H4022 & HE4022

- Designed to place your keyboard in the most comfortable, convenient position
- Scratch-, spill- and stain-resistant laminate withstands heavy use
- Radius front edge provides a comfortable resting place for the wrists
- Platform glides smoothly on steel, ball-bearing suspensions
- Position 2", 2 1/2", 3" or 3 1/2" below the worksurface bottom

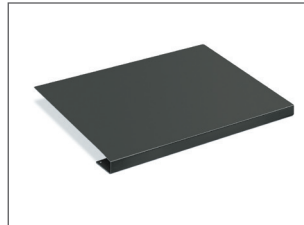
METAL KEYBOARD TRAY



H4028 & H4029

- Designed to place your keyboard in the most comfortable, convenient position
- The non-articulating platform glides smoothly on steel, ball-bearing suspensions
- Sturdy reinforced steel construction adds strength and durability
- Keyboard can be installed at one of four pre-set heights to improve wrist and forearm alignment
- Platform surface is positioned 3" below bottom of worksurface

METAL CORNER SLEEVE



H51204 & H51206

- Connects two HON worksurfaces to create a corner workstation
- Petite design creates a clean look
- Fits 1 1/8" thick square edge detail
- Easily attach an articulating keyboard platform with pre-drilled holes

CPU HOLDER



CPU1

- Retracts and swivels to allow full accessibility and easy stowage
- Accommodates up to 75lbs, measuring up to 64" in perimeter and up to 3 3/4" wide
- Quick and easy "Cinch & Lock" installation
- Safety feature prevents accidental release of strap tension

HON.

Make your space work[®]

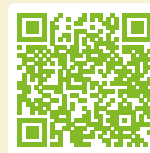
The HON Company
Muscatine, IA 52761
800.833.3964 | Check out hon.com

© 2024 The HON Company.

To view the registered and unregistered trademarks owned and used by The HON Company, visit hon.com/protected-marks. Models, upholstery and finishes are subject to change without notice.



For more information, visit hon.com/accessories/workplace-tools



SCAN TO CHECK OUT
WORKPLACE TOOLS
ON HON.COM

See HON Pricer for complete product information.