

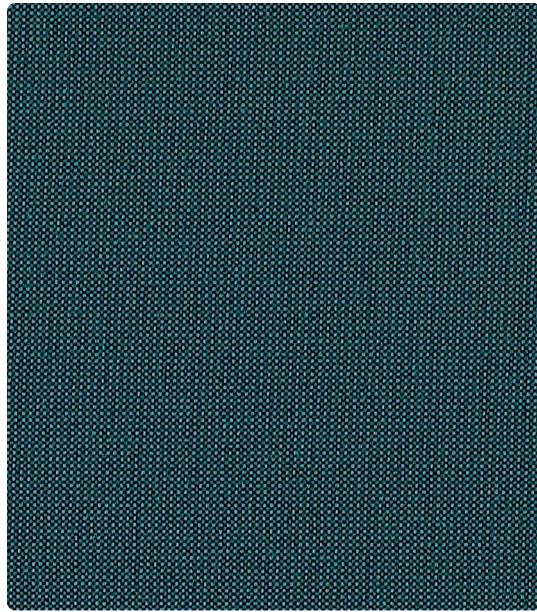
# HBF TEXTILES

## Upbeat 1036

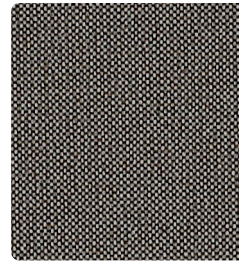
Upholstery,  
wrapped panel,  
systems panel

51% post-  
consumer  
recycled  
polyester,  
49% polyester

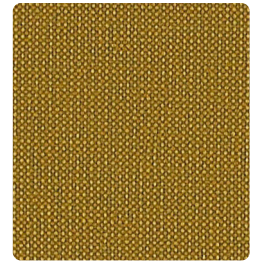
Kelly Harris  
Smith



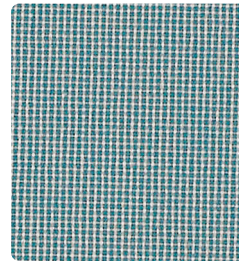
**1036-51**  
Alleyway



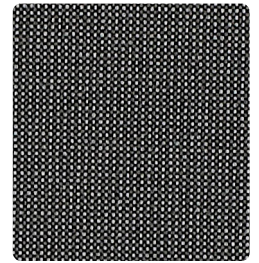
**1036-20**  
Cobblestone



**1036-22**  
Yellow Brick



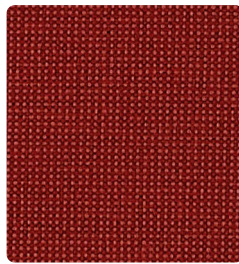
**1036-50**  
Skylight



**1036-85**  
Townhouse



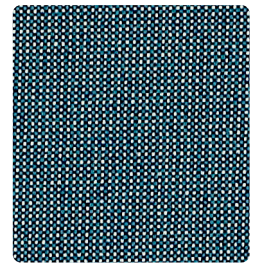
**1036-46**  
Bus Stop



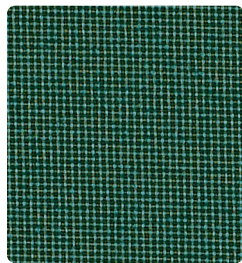
**1036-51**  
Firehouse



**1036-18**  
Crosswalk



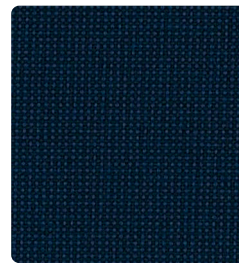
**1036-54**  
Window



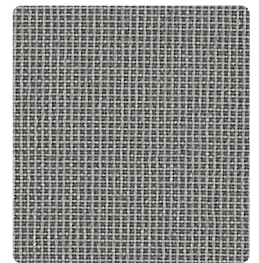
**1036-67**  
Transit



**1036-58**  
Fountain



**1036-55**  
Playground



**1036-81**  
Front Stoop



**1036-59**  
River



**1036-89**  
Scaffold

# Upbeat 1036

## DESIGNER

---

Kelly Harris Smith

## APPLICATION

---

Upholstery, wrapped panel, systems panel

## CONTENT

---

51% post-consumer recycled polyester,  
49% polyester

## WIDTH

---

54" W

## REPEAT

---

None

## FINISH

---

None

## BACKING

---

Acrylic

## ABRASION

---

100,000 double rubs (Wyzenbeek)

## ORIGIN

---

United States

## FLAME RESISTANCE

---

California TB 117-2013 Section 1 (Pass), Class A  
rated ASTM E-84 (unadhered)

## MAINTENANCE

---

WS: Clean with upholstery shampoo or mild dry  
cleaning solvent. Bleach solutions up to 10% for  
cleaning difficult stains

## SUSTAINABILITY

---

51% recycled content. Third party certified,  
SCS Indoor Advantage™ Gold. Meets HCWH  
Healthy Interiors Criteria.

## NOTES

---

Bleach cleanable



ACT® Registered Certification Marks