

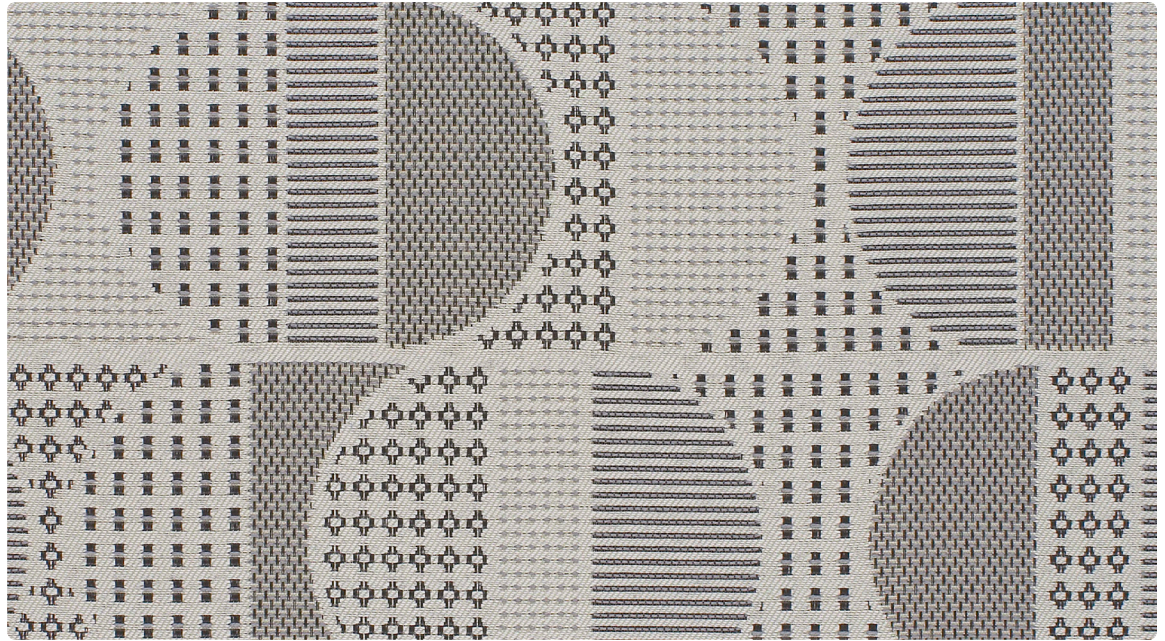
HBF TEXTILES

Uptown 1039

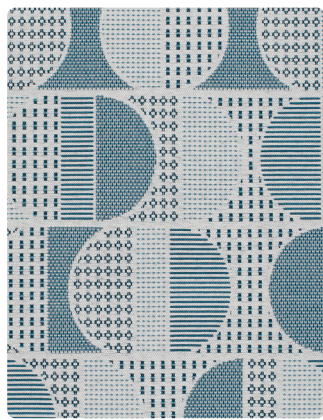
Upholstery,
wrapped panel,
systems panel

43% post-
industrial
recycled
polyester
34% polyester
23% post-
consumer
recycled
polyester

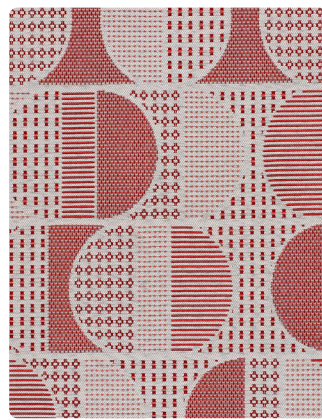
Kelly Harris
Smith



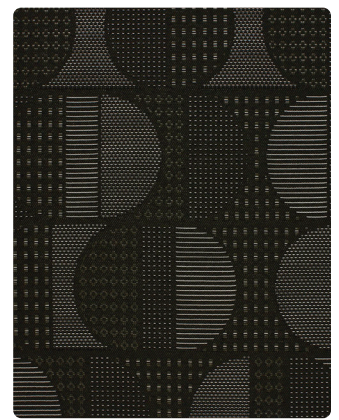
1039-18
Crosswalk



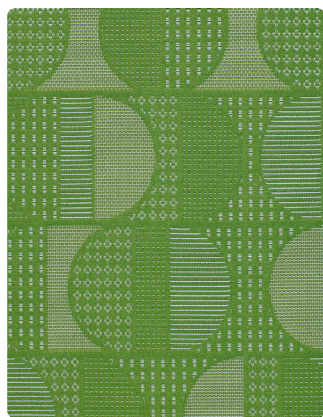
1039-54
Window



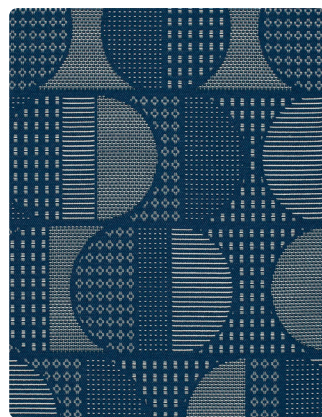
1039-44
Firehouse



1039-89
Scaffold



1039-63
Tree Top



1039-55
Playground

Uptown 1039

DESIGNER

Kelly Harris Smith

APPLICATION

Upholstery, wrapped panel, systems panel

CONTENT

43% post-industrial recycled polyester, 34% polyester, 23% post-consumer recycled polyester

WIDTH

57" W

REPEAT

19 1/2" V x 57" H

FINISH

None

BACKING

Acrylic

ABRASION

54,000 double rubs (Wyzenbeek)

ORIGIN

United States

FLAME RESISTANCE

California TB 117-2013 Section 1 (Pass), Class A rated ASTM E-84 (unadhered)

MAINTENANCE

WS: Clean with upholstery shampoo or mild dry cleaning solvent. Bleach solutions up to 20% for cleaning difficult stains

SUSTAINABILITY

66% recycled content. Third party certified, SCS Indoor Advantage™ Gold. Meets HCWH Healthy Interiors Criteria.

NOTES

Large scale repeat. Bleach cleanable.



ACT® Registered Certification Marks

