

# HON NOW™



## Healthy Workplace Tools

# Make your space safe.

As we return to work following the COVID-19 pandemic, ensuring a healthy and safe workplace environment is more important than ever. From cleanable acrylic screens to hands-free door pulls, we've got you covered with a variety of healthy workplace solutions.

## Acrylic Screens

Universal acrylic screens are designed to retrofit all existing HON worksurfaces and attach using double-sided tape. Attachment brackets are available in Black paint. The screens are BIFMA tested and have a HON Full Lifetime Warranty.



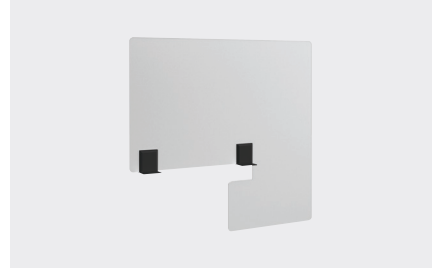
**TABLE SCREEN**

ITEM NO.	DESC.	STARTING AT LIST PRICE
<b>Acrylic Screens For 48"W Surfaces</b>		
HACRYSCRN2548	25"H x 45½"W	\$630
<b>Acrylic Screens For 54"W Surfaces</b>		
HACRYSCRN2554	25"H x 51½"W	\$664
<b>Acrylic Screens For 60"W Surfaces</b>		
HACRYSCRN2560	25"H x 57½"W	\$695
<b>Acrylic Screens For 66"W Surfaces</b>		
HACRYSCRN2566	25"H x 63½"W	\$729



**LATERAL SCREEN**

ITEM NO.	DESC.	STARTING AT LIST PRICE
<b>Acrylic Screens For 24"D Surfaces</b>		
HACRYSCRN2524	25"H x 21"D	\$436
<b>Acrylic Screens For 30"D Surfaces</b>		
HACRYSCRN2530	25"H x 25"D	\$457
<b>Acrylic Screens For 36"D Surfaces</b>		
HACRYSCRN2536	25"H x 34"D	\$480

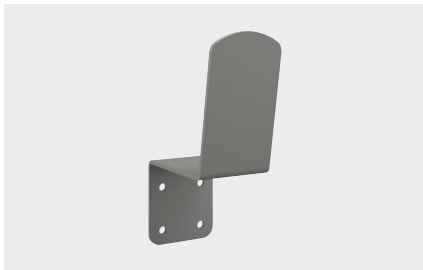


**EXTENDED SCREEN**

ITEM NO.	DESC.	STARTING AT LIST PRICE
<b>Acrylic Screens For 24"D Surfaces</b>		
HACRYEXSCRN2536	25"H x 33½"D	\$579
<b>Acrylic Screens For 30"D Surfaces</b>		
HACRYEXSCRN2042	20"H x 37"D	\$553

## Door Pulls

Attaches to any door allowing for hands-free entrance and exit. Mounting hardware is included for attaching to wood and steel doors. Offered in Textured Black and Textured Titanium paint.



**ARM DOOR PULL**

Available in 5-packs and 15 packs.

ITEM NO.	DESC.	LIST PRICE
<b>QTY. 5</b>		
HHC-ARMPULL5	2½"W x 4½"D x 7½"H	\$324
<b>QTY. 15</b>		
HHC-ARMPULL15	2½"W x 4½"D x 7½"H	\$900



**FOOT DOOR PULL**

Available in 5-packs and 15 packs.

ITEM NO.	DESC.	LIST PRICE
<b>QTY. 5</b>		
HHC-FOOTPULL5	5"W x 3¾"D x 1½"H	\$324
<b>QTY. 15</b>		
HHC-FOOTPULL15	5"W x 3¾"D x 1½"H	\$900



## Hand Sanitizer Stands

Stand is compatible with most manufacturers' automatic hand sanitizer dispensers. Ideal for high-traffic areas.



### HAND SANITIZER STAND

Mounting Area  
6"W x 12"H

ITEM NO.	DESC.	STARTING AT LIST PRICE
HHC-SANSTND	Hand Sanitizer Station 12"W x 16"D x 54"H Titanium Finish	\$256



### HAND SANITIZER MOUNT

Mounting Area  
3¼"W x 4"H

ITEM NO.	DESC.	STARTING AT LIST PRICE
SPLH-SYST-BKIT.M504975	Panel/Wall Mount 3¼"W x 2½"D x 4"H Black and Titanium Finish	\$447

## PPE Stand

Fit's most manufacturer's boxed PPE, including gloves, masks, wipes, tissues and automatic hand sanitizer dispensers.



### FREESTANDING PPE STAND

Compartment Size  
5"W x 5¼"D x 10"H

ITEM NO.	DESC.	STARTING AT LIST PRICE
HHC-PPESTND	Panel/Wall Mount 5"W x 5¼"D x 10"H Titanium Finish	\$555

## Plexi-Glass Screens

Unit is freestanding and does not need to be fixed to any surface. Clear plexiglass with black plexiglass base. Easy to assemble, no tools required.



### FREESTANDING WITH PASS-THRU OPENING

ITEM NO.	DESC.	LIST PRICE
HHC-TASCRN3630	36"H x 30"W	\$460
HHC-TASCRN3636	36"H x 36"W	\$470



### FREESTANDING WITHOUT PASS-THRU OPENING

ITEM NO.	DESC.	LIST PRICE
H-TASCRN3630	36"H x 30"W	\$460
H-TASCRN3636	36"H x 36"W	\$470

## Universal Panel Stackers

Can be used on any panel system between 1.975" and 3.450" thick. Panel stackers will work with both flat trim and radius trim. Stackers can span multiple panels.



### UNIVERSAL PANEL STACKERS

ITEM NO.	DESC.	LIST PRICE
HPNLSTACK2224	22"H x 22"W	\$384
HPNLSTACK2230	22"H x 28"W	\$429
HPNLSTACK2236	22"H x 34"W	\$480
HPNLSTACK2242	22"H x 40"W	\$531
HPNLSTACK2248	22"H x 46"W	\$593
HPNLSTACK2254	22"H x 52"W	\$622
HPNLSTACK2260	22"H x 58"W	\$644

Titanium Finish Brackets

See HON NOW Pricer for complete product information.

For more information, visit [hon.com/healthyworkplace](https://hon.com/healthyworkplace)

**HON.**

Make your space work.