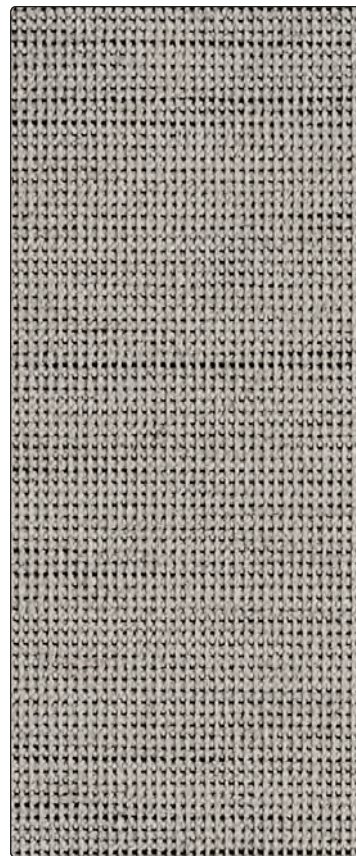


Everyday Textures

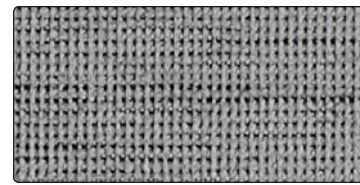
HBF
TEXTILES



Look-see 1044-11 Snowy



Walkabout 1046-11 Wistful White



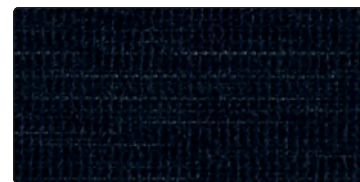
1044-80 Shady



1044-85 Foggy



1044-89 Stone



1044-59 Midnight



1046-80 Swanky Silver



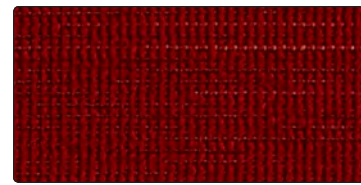
1046-85 Gutsy Grey



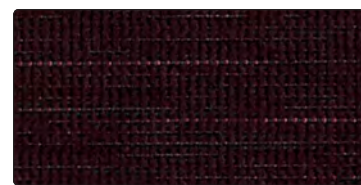
1046-89 Peaceful Pewter



1046-87 Cool Carbon



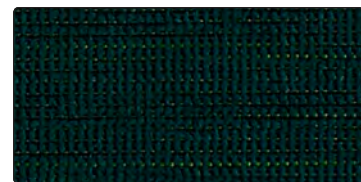
1044-44 Lava



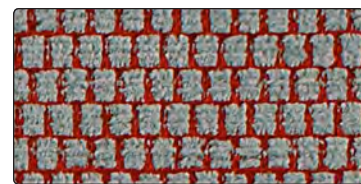
1044-75 Plum



1044-57 Ultramarine



1044-67 Foliage



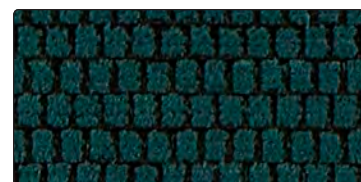
1046-44 Reliable Red



1046-58 Noble Navy



1046-59 Bewitched Blue



1046-64 Jungly Jade



Zippy 1045-89 Dark Grey



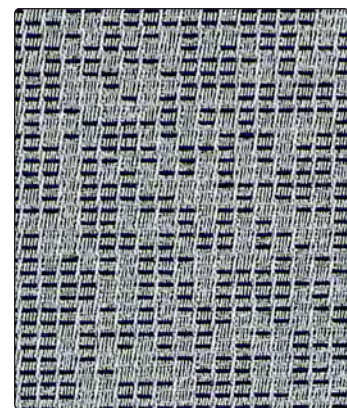
Blink 1048-90 Peppery



1045-80 Grey



1045-67 Pine



1048-80 Silvery



1048-44 Red Orange



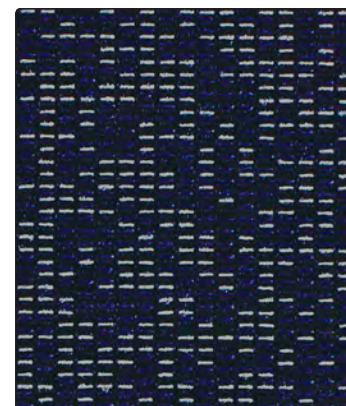
1045-44 Deep Red



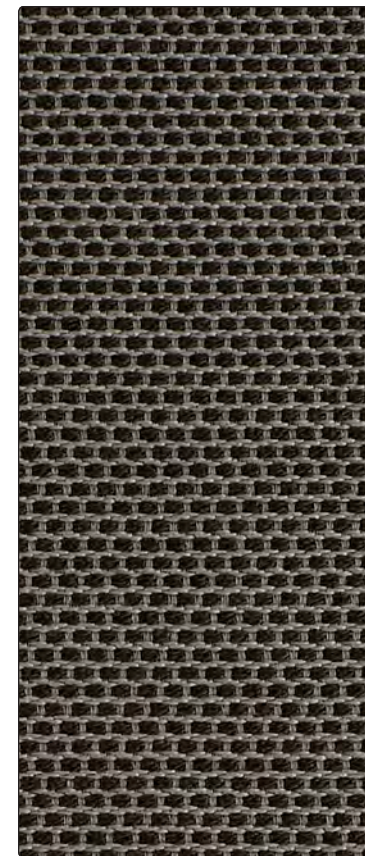
1045-55 School Blue



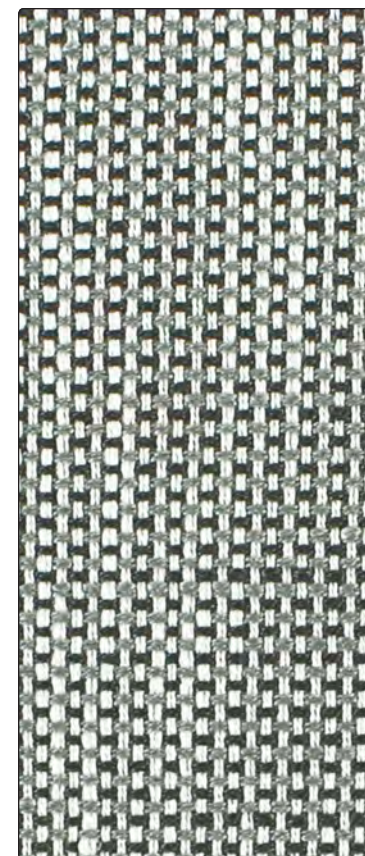
1048-77 Dark Violet



1048-59 Bright Blue



Poppy 1047-85 Graphite



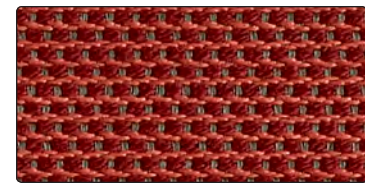
Checkmate 1043-80 Smoke Slate



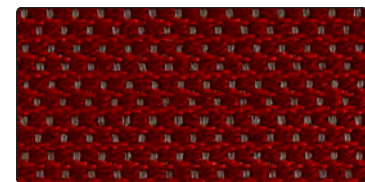
1047-16 Natural



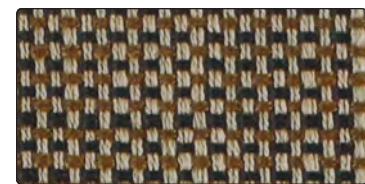
1047-35 Khaki



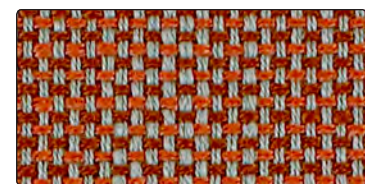
1047-45 Punch



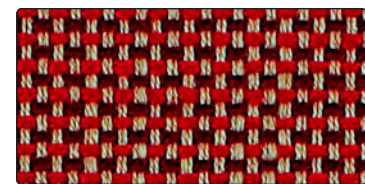
1047-44 Flame



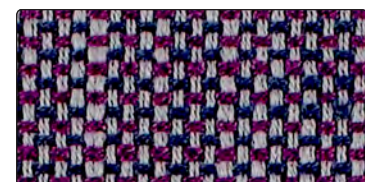
1043-25 Tanned Umber



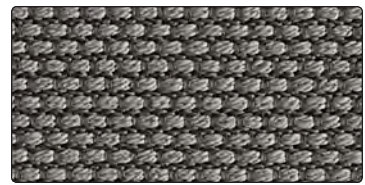
1043-43 Coral Rust



1043-44 Red Brick



1043-77 Purple Indigo



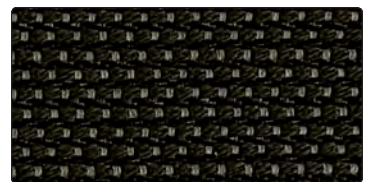
1047-83 Neutral



1047-63 Limelight



1047-56 Pool



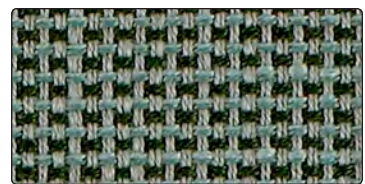
1047-89 Ink



1043-56 Aqua Sky



1043-58 Royal Navy



1043-66 Forest Mint



1043-89 Charcoal Black

PATTERN Look-see 1044
APPLICATION Upholstery, wrapped panel, systems panel
CONTENT 52% polyester, 31% post-industrial recycled polyester, 17% post-consumer recycled polyester
WIDTH 56" W
BACKING Acrylic
ABRASION 100,000 double rubs (Wyzenbeek)
FLAME RESISTANCE California TB 117-2013 Section 1 (Pass)
MAINTENANCE WS: Clean with upholstery shampoo or mild dry cleaning solvents. Diluted bleach solutions up to 20% for cleaning difficult stains.
SUSTAINABILITY 48% recycled content. Third party certified, SCS Indoor Advantage™ Gold. Meets HCWH Healthy Interiors Criteria.
NOTE Additional colors available. See website.



PATTERN Zippy 1045
APPLICATION Upholstery, wrapped panel, systems panel
CONTENT 79% polyester, 21% post-consumer recycled polyester
WIDTH 57" W
REPEAT 5 1/2" V x 2 1/2" H
BACKING Acrylic
ABRASION 51,000 double rubs (Wyzenbeek)
FLAME RESISTANCE California TB 117-2013 Section 1 (Pass)
MAINTENANCE WS: Clean with upholstery shampoo or mild dry cleaning solvents. Diluted bleach solutions up to 20% for cleaning difficult stains.
SUSTAINABILITY 21% recycled content. Third party certified, SCS Indoor Advantage™ Gold. Meets HCWH Healthy Interiors Criteria.
NOTE Additional colors available. See website.



PATTERN Poppy 1047
APPLICATION Upholstery
CONTENT 48% cotton, 37% post-consumer recycled polyester, 15% post-industrial recycled polyester
WIDTH 56" W
BACKING Acrylic
ABRASION 60,000 double rubs (Wyzenbeek)
FLAME RESISTANCE California TB 117-2013 Section 1 (Pass)
MAINTENANCE S: Clean with water free dry cleaning solvent
SUSTAINABILITY 48% rapidly renewable content, 52% recycled content. Third party certified, SCS Indoor Advantage™ Gold. Meets HCWH Healthy Interiors Criteria.
NOTE Additional colors available. See website.



PATTERN Walkabout 1046
APPLICATION Upholstery, wrapped panel, systems panel
CONTENT 41% polyester, 38% post-industrial recycled polyester, 21% post-consumer polyester
WIDTH 56" W
BACKING Acrylic
ABRASION 63,000 double rubs (Wyzenbeek)
FLAME RESISTANCE California TB 117-2013 Section 1 (Pass)
MAINTENANCE WS: Clean with upholstery shampoo or mild dry cleaning solvents. Diluted bleach solutions up to 20% for cleaning difficult stains.
SUSTAINABILITY 59% recycled content. Third party certified, SCS Indoor Advantage™ Gold. Meets HCWH Healthy Interiors Criteria.
NOTE Additional colors available. See website.



PATTERN Blink 1048
APPLICATION Upholstery, wrapped panel, systems panel
CONTENT 62% post-consumer recycled polyester, 38% polyester
WIDTH 57" W
BACKING Acrylic
ABRASION 75,000 double rubs (Wyzenbeek)
FLAME RESISTANCE California TB 117-2013 Section 1 (Pass)
MAINTENANCE WS: Clean with upholstery shampoo or mild dry cleaning solvents. Diluted bleach solutions up to 20% for cleaning difficult stains.
SUSTAINABILITY 62% recycled content. Third party certified, SCS Indoor Advantage™ Gold. Meets HCWH Healthy Interiors Criteria.
NOTE Additional colors available. See website.



PATTERN Checkmate 1043
APPLICATION Upholstery, wrapped panel, systems panel
CONTENT 94% polyester, 4% post-industrial recycled polyester, 2% post-consumer recycled polyester
WIDTH 56" W
BACKING Acrylic
ABRASION 63,000 double rubs (Wyzenbeek)
FLAME RESISTANCE California TB 117-2013 Section 1 (Pass)
MAINTENANCE WS: Clean with upholstery shampoo or mild dry cleaning solvents. Diluted bleach solutions up to 20% for cleaning difficult stains.
SUSTAINABILITY 6% recycled content. Third party certified, SCS Indoor Advantage™ Gold. Meets HCWH Healthy Interiors Criteria.
NOTE Additional colors available. See website.

