

# HBF TEXTILES

SUMMER 2021 COLLECTION



# Summer 2021 Collection

**Summer 2021 Collection**



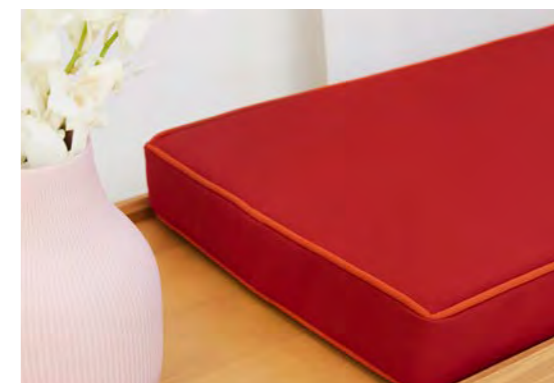
**Digital Bloom 2.0 1050**



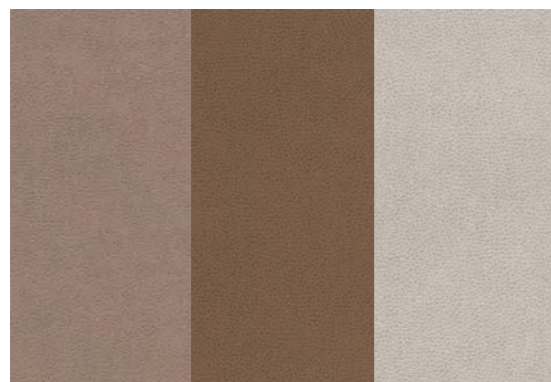
**Soft Angles 2.0 1051**



**Here & There 1052**



**Parker 1054**



**Pebbled 935**



# Digital Bloom 2.0

Digital Bloom represents a pixilated organic pattern reminiscent of floral blooms. The inspiration comes from shadows of organic patterns reinterpreted in a modern way.

|                         |   |
|-------------------------|---|
| <b>PATTERN</b>          | 1050  |
| <b>COLORWAYS</b>        | 8   |
| <b>APPLICATION</b>      | Upholstery, wrapped panel   |
| <b>CONTENT</b>          | 100% post-consumer biodegradable* polyester   |
| <b>WIDTH</b>            | 56" W   |
| <b>REPEAT</b>           | 32 7/8" V x 9 1/2" H (fabric shown railroaded)  |
| <b>FINISH</b>           | None  |
| <b>BACKING</b>          | Biodegradable* acrylic  |
| <b>ABRASION</b>         | 90,000 double rubs (W)  |
| <b>ORIGIN</b>           | United States   |
| <b>FLAME RESISTANCE</b> | California TB 117-2013 Section 1 (Pass), Class A rated ASTM E-84 (Unadhered), NFPA 260 (Pass)                                       |
| <b>MAINTENANCE</b>      | WS: Clean with upholstery shampoo or mild dry cleaning solvent. Bleach cleanable solutions up to 10% for cleaning difficult stains. |
| <b>SUSTAINABILITY</b>   | 100% recycled content. Third party certified, SCS Indoor Advantage™ Gold. NSF 336 Gold.   |
| <b>NOTES</b>            | Large scale repeat. Bleach cleanable.   |
| <b>PRICE   GRADE</b>    | \$59.00/yard   HBF Grade G  |

*\*CLEAN IMPACT TEXTILES™ Biodegradable – 100% post-consumer recycled biodegradable polyester\*  
Rate and extent of biodegradation into elements found in nature is 91% after 1,278 days under ASTM D5511  
(Anaerobic Biodegradation of Plastic Materials Under High Solids Anaerobic Digestion Conditions). The test was  
done with the same component (PET) polyester and biocatalyst additive. No evidence of further degradation.*





Digital Bloom 2.0 1050





**Digital Bloom 2.0 1050**  
(Fabric shown railroaded)



Soft Angles 2.0 1051

# Soft Angles 2.0

Inspired by frost patterns on a window that begins to melt away, **Soft Angles 2.0** has been refreshed with bleach cleanability and new modern hues that reflect current color trends.

|                         |   |
|-------------------------|---|
| <b>PATTERN</b>          | 1051  |
| <b>COLORWAYS</b>        | 8   |
| <b>APPLICATION</b>      | Upholstery, wrapped panel   |
| <b>CONTENT</b>          | 52% polyester, 32% post-consumer recycled polyester, 16% nylon  |
| <b>WIDTH</b>            | 57" W   |
| <b>REPEAT</b>           | 10 3/8" V x 9 5/8" H  |
| <b>FINISH</b>           | None  |
| <b>BACKING</b>          | Light acrylic   |
| <b>ABRASION</b>         | 75,000 double rubs (W)  |
| <b>ORIGIN</b>           | United States   |
| <b>FLAME RESISTANCE</b> | California TB 117-2013 Section 1 (Pass), Class A rated ASTM E-84 (Unadhered), NFPA 260 (Pass)                                       |
| <b>MAINTENANCE</b>      | WS: Clean with upholstery shampoo or mild dry cleaning solvent. Bleach cleanable solutions up to 10% for cleaning difficult stains. |
| <b>SUSTAINABILITY</b>   | 32% recycled content. Third party certified, SCS Indoor Advantage™ Gold.  |
| <b>NOTES</b>            | Large scale repeat. Bleach cleanable.   |
| <b>PRICE   GRADE</b>    | \$64.00/yard   HBF Grade H  |

HBF  
TEXTILES



Soft Angles 2.0 1051







# Here & There

**Here & There mimics the warp and weft yarns of a sophisticated weave structure. This coated fabric compliments many HBF Textiles woven materials with an easy maintenance solution for high traffic applications.**

|                         |   |
|-------------------------|---|
| <b>PATTERN</b>          | 1052  |
| <b>COLORWAYS</b>        | 12  |
| <b>APPLICATION</b>      | Upholstery  |
| <b>CONTENT</b>          | 100% polyurethane (polycarbonate) face,<br>100% polyester back  |
| <b>WIDTH</b>            | 54" W   |
| <b>FINISH</b>           | Writer's Block® ink resistant   |
| <b>BACKING</b>          | None  |
| <b>ABRASION</b>         | 100,000 double rubs (W)   |
| <b>ORIGIN</b>           | China   |
| <b>FLAME RESISTANCE</b> | California TB 117-2013 Section 1 (Pass), NFPA 260 (Pass)  |
| <b>MAINTENANCE</b>      | WS: Clean with upholstery shampoo or mild dry cleaning solvent. Bleach cleanable solutions up to 20% for cleaning difficult stains.       |
| <b>SUSTAINABILITY</b>   | No: PVC, POPs, PBDEs, HFRs, Plasticizers, Heavy Metals, Stabilizers Phthalates or BPA. Third party certified, SCS Indoor Advantage™ Gold. |
| <b>NOTES</b>            | Writer's Block® ink and denim transfer resistant technology. Bleach cleanable.  |
| <b>PRICE   GRADE</b>    | \$45.00/yard   HBF Grade E  |



HBF  
TEXTILES

Here & There 1052

HBF  
TEXTILES

Parker 1054

# Parker

An amazing matte faux material reminiscent of scuba gear. Super saturated shades that emulate some of our Faux Real II colors and new colors that partner nicely with HBF Textiles materials.

|                         |   |
|-------------------------|---|
| <b>PATTERN</b>          | 1054  |
| <b>COLORWAYS</b>        | 16  |
| <b>APPLICATION</b>      | Upholstery  |
| <b>CONTENT</b>          | 100% polyurethane (polycarbonate) face,<br>100% polyester back  |
| <b>WIDTH</b>            | 54" W   |
| <b>REPEAT</b>           | None  |
| <b>FINISH</b>           | Writer's Block® ink resistant   |
| <b>BACKING</b>          | None  |
| <b>ABRASION</b>         | 100,000 double rubs (W)   |
| <b>ORIGIN</b>           | China   |
| <b>FLAME RESISTANCE</b> | California TB 117-2013 Section 1 (Pass), NFPA 260 (Pass)  |
| <b>MAINTENANCE</b>      | WS: Clean with upholstery shampoo or mild dry cleaning solvent. Bleach cleanable solutions up to 10% for cleaning difficult stains.       |
| <b>SUSTAINABILITY</b>   | No: PVC, POPs, PBDEs, HFRs, Plasticizers, Heavy Metals, Stabilizers Phthalates or BPA. Third party certified, SCS Indoor Advantage™ Gold. |
| <b>NOTES</b>            | Writer's Block® ink and denim transfer resistant technology. Bleach cleanable.  |
| <b>PRICE   GRADE</b>    | \$39.00/yard   HBF Grade D  |





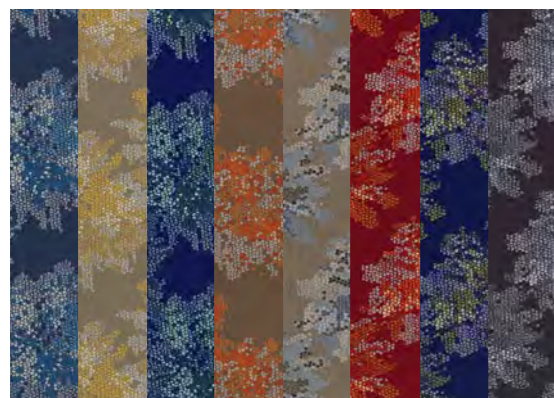
**Parker 1054**  
**Digital Bloom 2.0 105**  
**Soft Angles 2.0 1051**  
**Here & There 1052**  
**Pebbled 935**

# Pebbled

Our perennial super start, Pebbled has a refreshed palette and a track record of beautiful installations.

|                         |   |
|-------------------------|---|
| <b>PATTERN</b>          | 935   |
| <b>COLORWAYS</b>        | 3 new (7 total)   |
| <b>APPLICATION</b>      | Upholstery  |
| <b>CONTENT</b>          | 100% polyurethane (polycarbonate) face,<br>100% polyester back  |
| <b>WIDTH</b>            | 54" W   |
| <b>REPEAT</b>           | None  |
| <b>FINISH</b>           | Writer's Block® ink resistant   |
| <b>BACKING</b>          | None  |
| <b>ABRASION</b>         | 100,000 double rubs (W)   |
| <b>ORIGIN</b>           | United States   |
| <b>FLAME RESISTANCE</b> | California TB 117-2013 Section 1 (Pass), NFPA 260 (Class 1)   |
| <b>MAINTENANCE</b>      | WS: Clean with upholstery shampoo or mild dry cleaning solvent. Bleach solutions up to 20% for cleaning difficult stains.                 |
| <b>SUSTAINABILITY</b>   | No: PVC, POPs, PBDEs, HFRs, Plasticizers, Heavy Metals, Stabilizers Phthalates or BPA. Third party certified, SCS Indoor Advantage™ Gold. |
| <b>NOTES</b>            | Writer's Block® ink and denim transfer resistant technology. Bleach cleanable.  |
| <b>PRICE   GRADE</b>    | \$45.00/yard   HBF Grade E  |

## Summer 2021 Collection Pattern Color Rotation



### Digital Bloom 2.0 1050

- |                   |               |
|-------------------|---------------|
| 56 Blue Poppy     | 63 Forsythia  |
| 22 Yellow Button  | 59 Cornflower |
| 67 Solomon's Seal |               |
| 45 Autumn Joy     |               |
| 83 Hydrangea      |               |
| 75 Dahlia         |               |



### Soft Angles 2.0 1051

- |                   |                 |
|-------------------|-----------------|
| 18 Lifting Fog    | 77 Dusty Violet |
| 37 Morning Frost  | 59 Aged Indigo  |
| 46 Tamarind Spice |                 |
| 30 Smoky Copper   |                 |
| 67 Honed Jade     |                 |
| 63 Electric Green |                 |



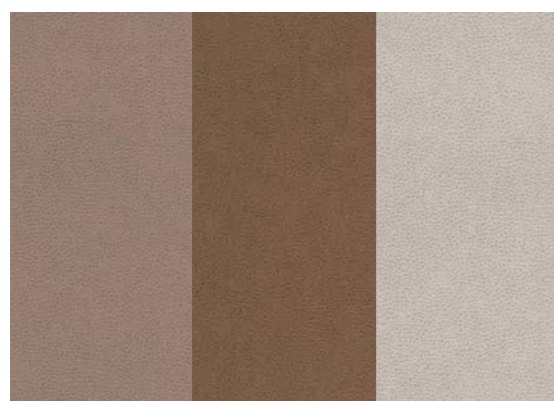
### Here & There 1052

- |                |                   |
|----------------|-------------------|
| 16 Sandbar     | 54 Seafoam        |
| 20 Khaki Tan   | 55 Favorite Jeans |
| 18 Beach Sand  | 84 Tatami Taupe   |
| 37 Bark Brown  | 77 Dusty Violet   |
| 62 Dried Herb  | 81 Icy Grey       |
| 85 Grey Shadow | 90 Warm Black     |



### Parker 1054

- |              |              |
|--------------|--------------|
| 11 Magnesium | 75 Rioja     |
| 37 Mink      | 77 Regal     |
| 87 Magnet    | 66 Aloe      |
| 18 Cumulus   | 67 Pine      |
| 85 Griffin   | 56 Cyan      |
| 25 Farina    | 55 Rapids    |
| 43 Paprika   | 59 Nightfall |
| 44 Grenadine | 90 Domino    |



### Pebbled 935

- |             |
|-------------|
| 37 Teak     |
| 34 Pinecone |
| 80 Quartz   |

# Summer 2021 Collection