

# HBF TEXTILES

## **Soft Angles 2.0 1051**

---

Upholstery, wrapped panel

---

52% polyester, 32%  
post-consumer recycled  
polyester, 16% nylon

---

Bleach cleanable

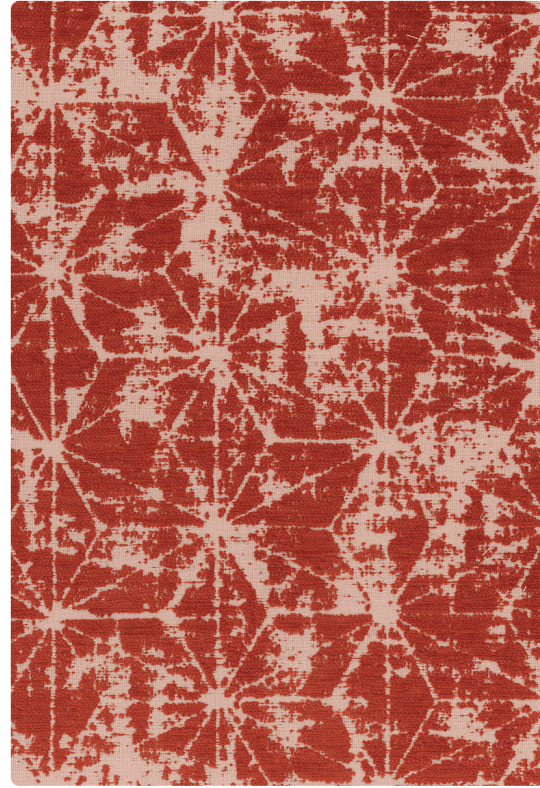


**1051-18**  
Lifting Fog

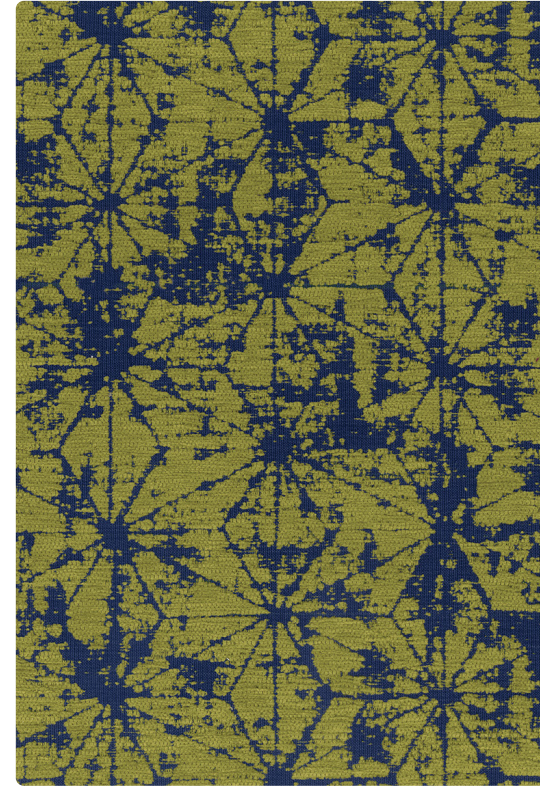




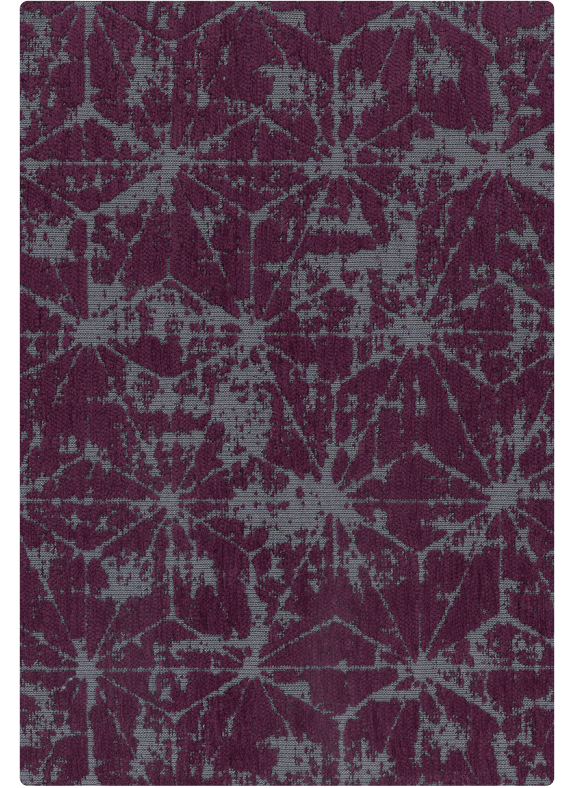
1051-37  
Morning Frost



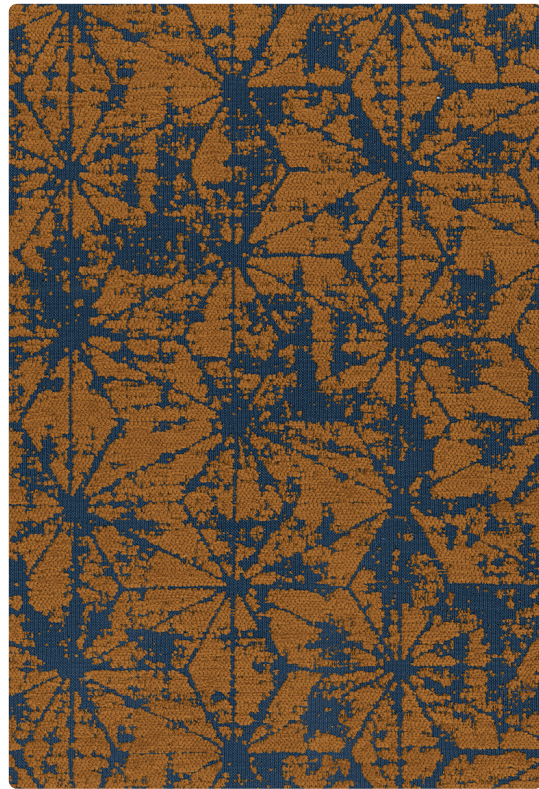
1051-46  
Tamarind Spice



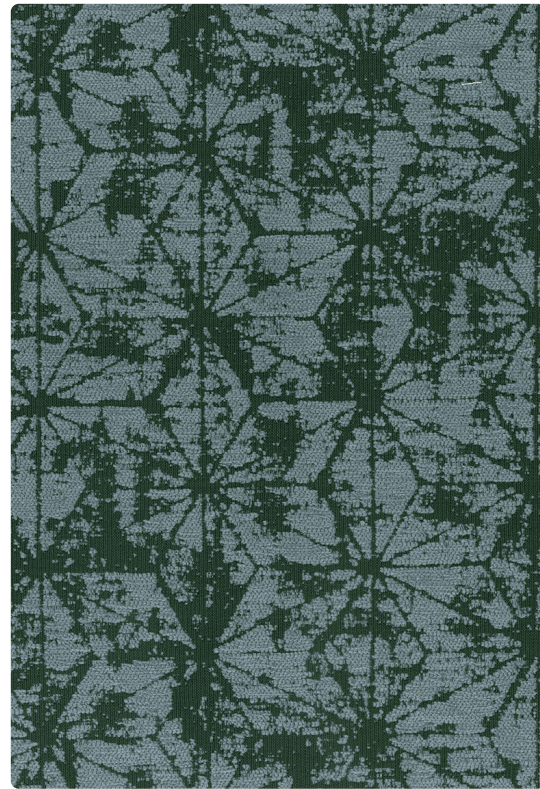
1051-63  
Electric Green



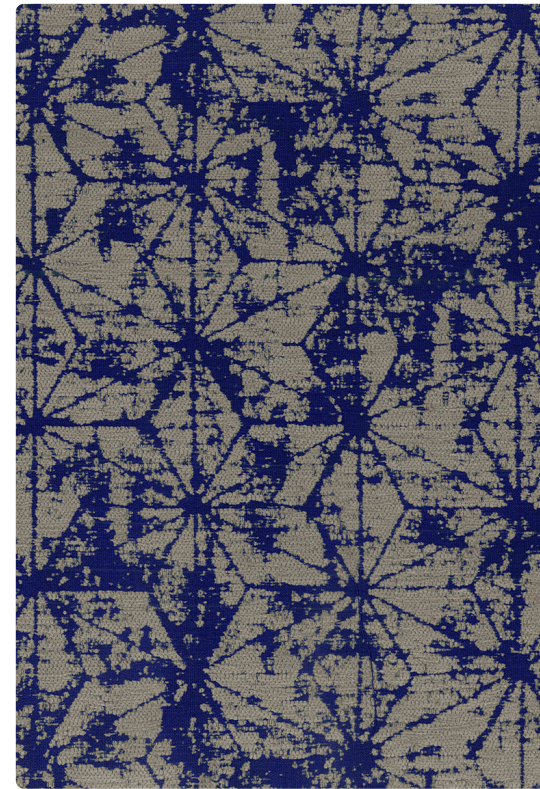
1051-77  
Dusty Violet



1051-30  
Smoky Copper



1051-67  
Honed Jade



1051-59  
Aged Indigo



# Soft Angles 2.0 1051

## APPLICATION

Upholstery, wrapped panel

## CONTENT

52% polyester, 32% post-consumer recycled polyester, 16% nylon

## WIDTH

57" W

## REPEAT

10 3/8" V x 9 5/8" H

## FINISH

None

## BACKING

Light acrylic

## ABRASION

75,000 double rubs (Wyzenbeek)

## ORIGIN

United States

## FLAME RESISTANCE

California TB 117-2013 Section 1 (Pass), Class A rated ASTM E-84 (Unadhered), NFPA 260 (Pass)

## MAINTENANCE

WS: Clean with upholstery shampoo or mild dry cleaning solvent. Bleach solutions up to 10% for cleaning difficult stains.

## SUSTAINABILITY

32% recycled content. Third party certified, SCS Indoor Advantage™ Gold.

## NOTES

Large scale repeat. Bleach cleanable.



ACT® Registered Certification Marks

