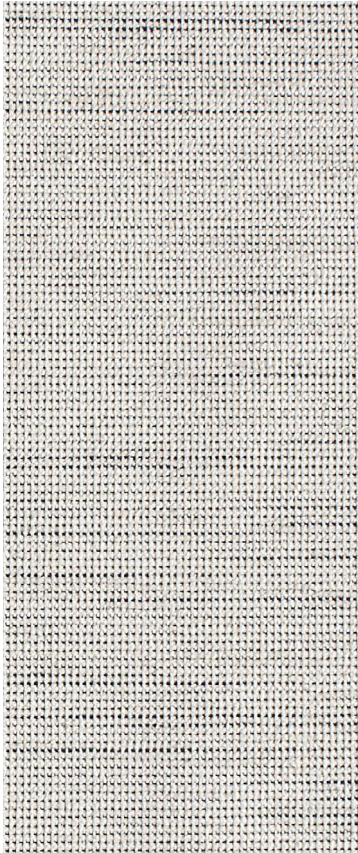
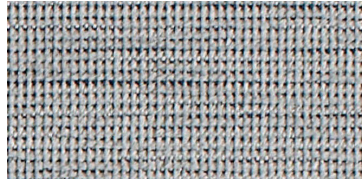


Everyday Textures

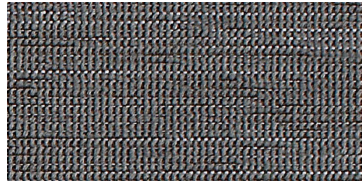
HBF
TEXTILES



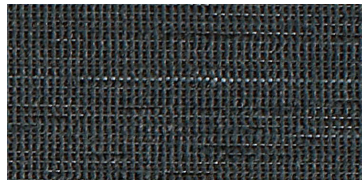
Look-see 1044-11 Snowy



1044-80 Shady



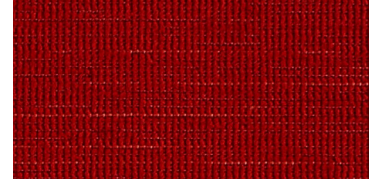
1044-85 Foggy



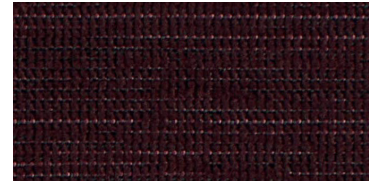
1044-89 Stone



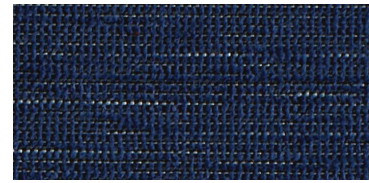
1044-59 Midnight



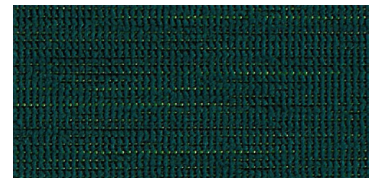
1044-44 Lava



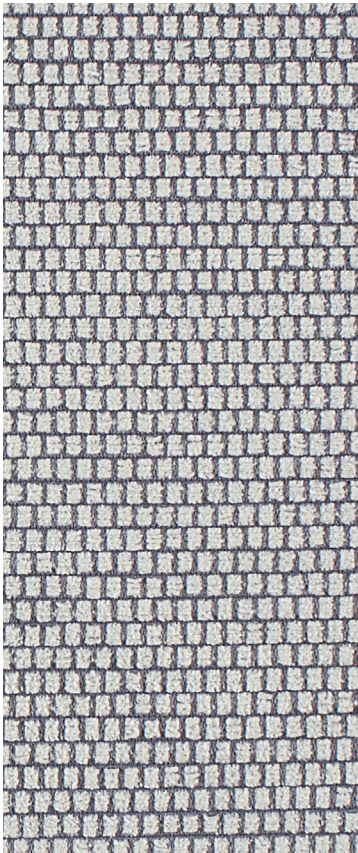
1044-75 Plum



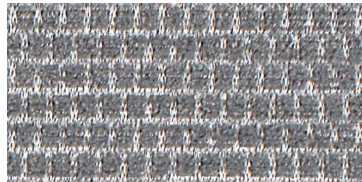
1044-57 Ultramarine



1044-67 Foliage



Walkabout 1046-11 Wistful White



1046-80 Swanky Silver



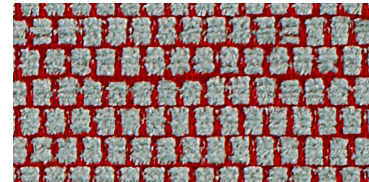
1046-85 Gutsy Grey



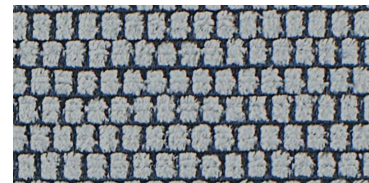
1046-89 Peaceful Petwer



1046-87 Cool Carbon



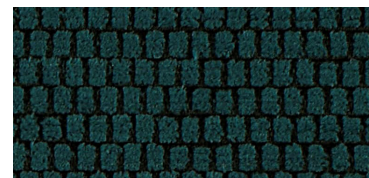
1046-44 Reliable Red



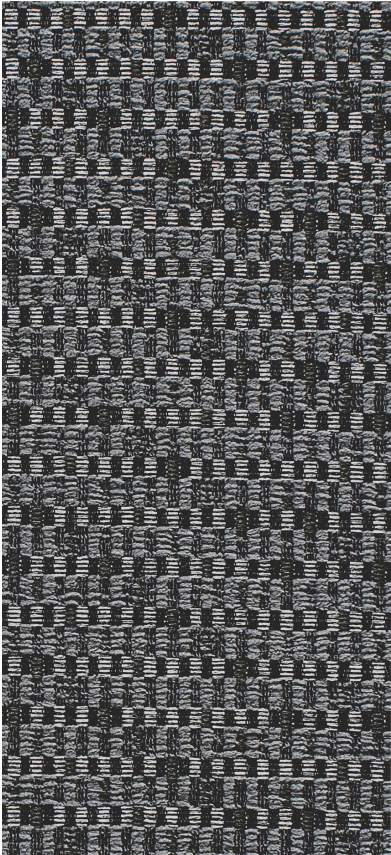
1046-58 Noble Navy



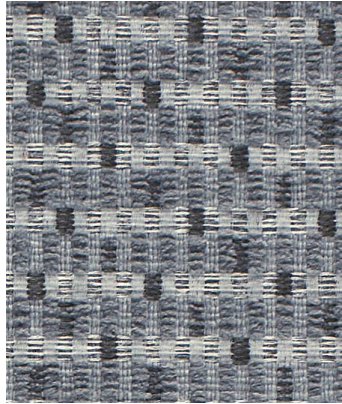
1046-59 Bewitched Blue



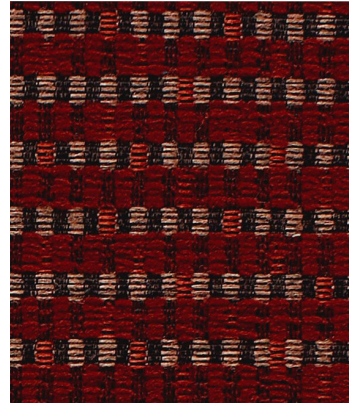
1046-64 Jungly Jade



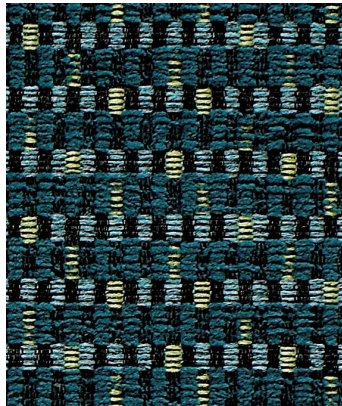
Zippy 1045-89 Dark Grey



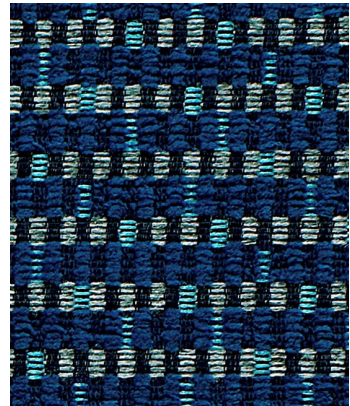
1045-80 Grey



1045-44 Deep Red



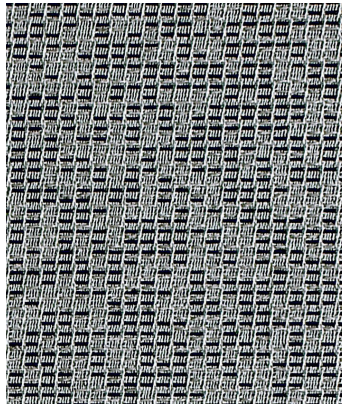
1045-67 Pine



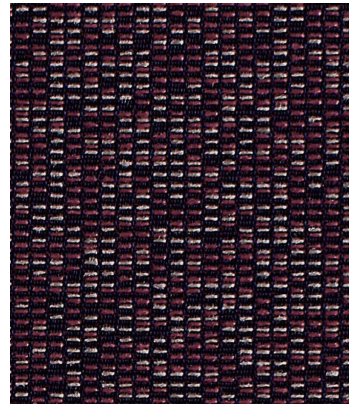
1045-55 School Blue



Blink 1048-90 Peppery



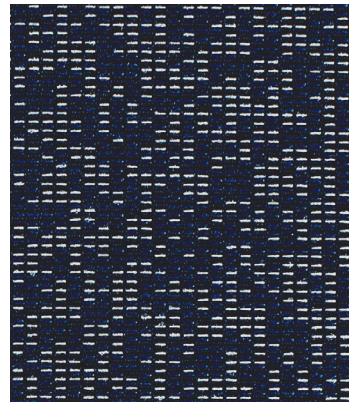
1048-80 Silvery



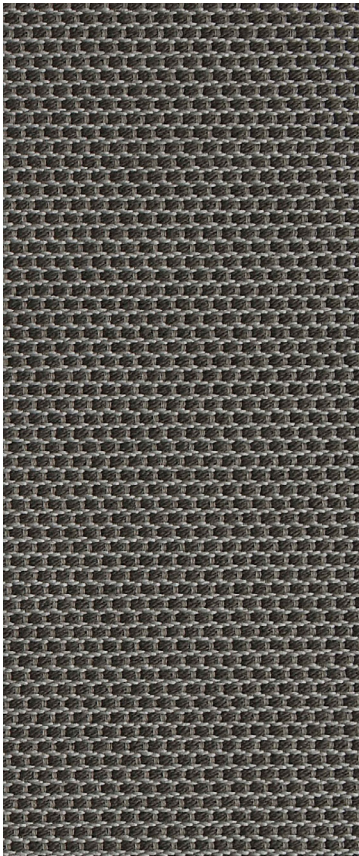
1048-77 Dark Violet



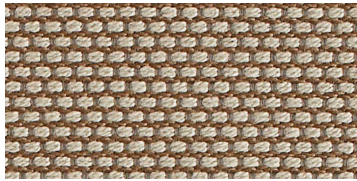
1048-44 Red Orange



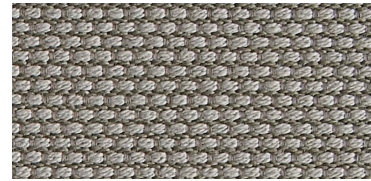
1048-59 Bright Blue



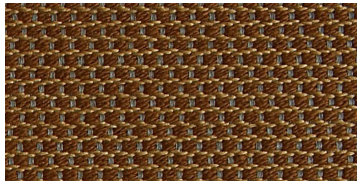
Poppy 1047-85 Graphite



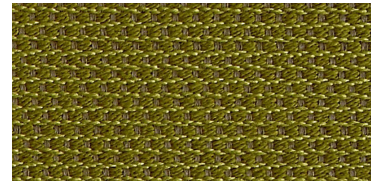
1047-16 Natural



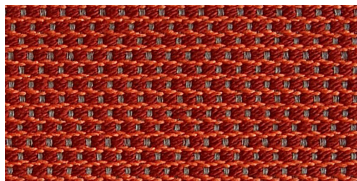
1047-83 Neutral



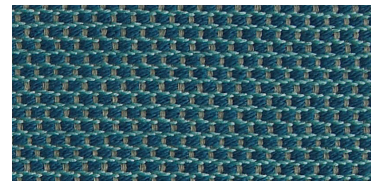
1047-35 Khaki



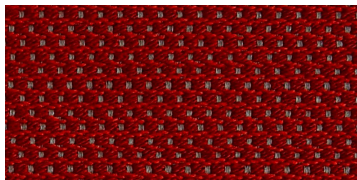
1047-63 Limelight



1047-45 Punch



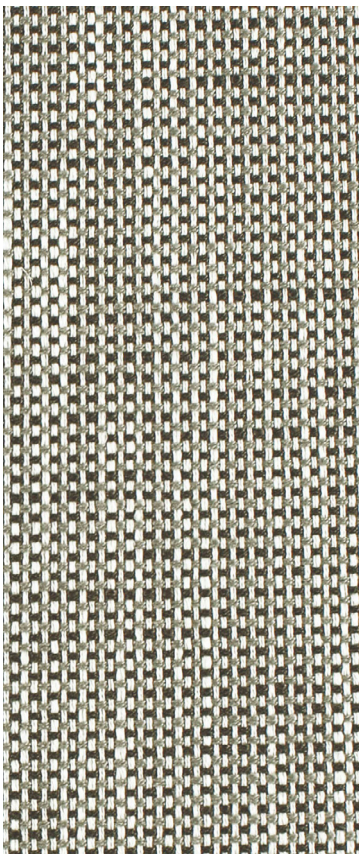
1047-56 Pool



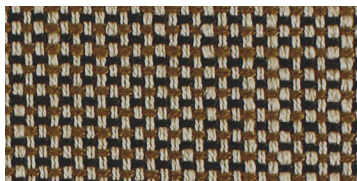
1047-44 Flame



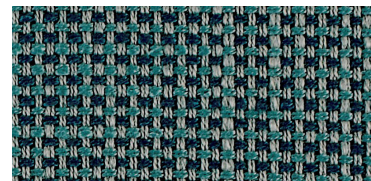
1047-89 Ink



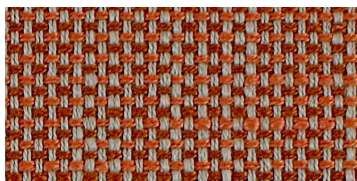
Checkmate 1043-80 Smoke Slate



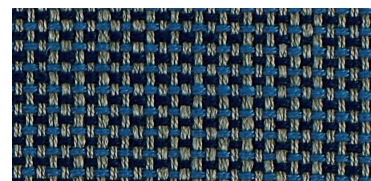
1043-25 Tanned Umber



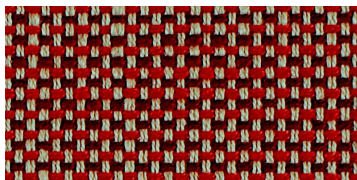
1043-56 Aqua Sky



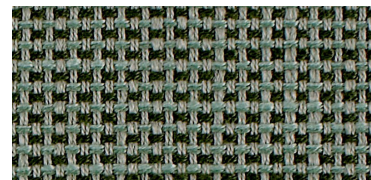
1043-43 Coral Rust



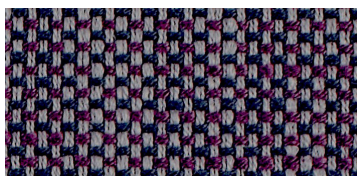
1043-58 Royal Navy



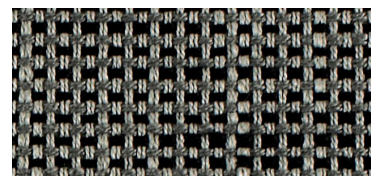
1043-44 Red Brick



1043-66 Forest Mint



1043-77 Purple Indigo



1043-89 Charcoal Black

PATTERN Look-see 1044
APPLICATION Upholstery
CONTENT 52% polyester, 31% post-industrial recycled polyester, 17% post-consumer recycled polyester
WIDTH 56" W
BACKING Acrylic
ABRASION 100,000 double rubs (Wyzenbeek)
FLAME RESISTANCE California TB 117-2013 Section 1 (Pass)
MAINTENANCE WS: Clean with upholstery shampoo or mild dry cleaning solvent. Diluted bleach solutions up to 20% for cleaning difficult stains.
SUSTAINABILITY 48% recycled content. Third party certified, SCS Indoor Advantage™ Gold
NOTE Additional colors available. See website.



ACT® Registered Certification Marks

PATTERN Zippy 1045
APPLICATION Upholstery
CONTENT 79% polyester, 21% post-consumer recycled polyester
WIDTH 57" W
REPEAT 5 1/2" V x 2 1/2" H
BACKING Acrylic
ABRASION 51,000 double rubs (Wyzenbeek)
FLAME RESISTANCE California TB 117-2013 Section 1 (Pass)
MAINTENANCE WS: Clean with upholstery shampoo or mild dry cleaning solvent. Diluted bleach solutions up to 20% for cleaning difficult stains.
SUSTAINABILITY 21% recycled content. Third party certified, SCS Indoor Advantage™ Gold
NOTE Additional colors available. See website.



ACT® Registered Certification Marks

PATTERN Poppy 1047
APPLICATION Upholstery
CONTENT 48% cotton, 37% post-consumer recycled polyester, 15% post-industrial recycled polyester
WIDTH 56" W
BACKING Acrylic
ABRASION 60,000 double rubs (Wyzenbeek)
FLAME RESISTANCE California TB 117-2013 Section 1 (Pass)
MAINTENANCE S: Clean with water free dry cleaning solvent
SUSTAINABILITY 48% rapidly renewable content, 52% recycled content. Third party certified, SCS Indoor Advantage™ Gold.
NOTE Additional colors available. See website.



ACT® Registered Certification Marks

PATTERN Walkabout 1046
APPLICATION Upholstery
CONTENT 41% polyester, 38% post-industrial recycled polyester, 21% post-consumer recycled polyester
WIDTH 56" W
BACKING Acrylic
ABRASION 63,000 double rubs (Wyzenbeek)
FLAME RESISTANCE California TB 117-2013 Section 1 (Pass)
MAINTENANCE WS: Clean with upholstery shampoo or mild dry cleaning solvent. Diluted bleach solutions up to 20% for cleaning difficult stains.
SUSTAINABILITY 59% recycled content. Third party certified, SCS Indoor Advantage™ Gold.
NOTE Additional colors available. See website.



ACT® Registered Certification Marks

PATTERN Blink 1048
APPLICATION Upholstery
CONTENT 62% post-consumer recycled polyester, 38% polyester
WIDTH 57" W
BACKING Acrylic
ABRASION 75,000 double rubs (Wyzenbeek)
FLAME RESISTANCE California TB 117-2013 Section 1 (Pass)
MAINTENANCE WS: Clean with upholstery shampoo or mild dry cleaning solvent. Diluted bleach solutions up to 20% for cleaning difficult stains.
SUSTAINABILITY 62% recycled content. Third party certified, SCS Indoor Advantage™ Gold
NOTE Additional colors available. See website.



ACT® Registered Certification Marks

PATTERN Checkmate 1043
APPLICATION Upholstery
CONTENT 94% polyester, 4% post-industrial recycled polyester, 2% post-consumer recycled polyester
WIDTH 56" W
BACKING Acrylic
ABRASION 63,000 double rubs (Wyzenbeek)
FLAME RESISTANCE California TB 117-2013 Section 1 (Pass)
MAINTENANCE WS: Clean with upholstery shampoo or mild dry cleaning solvent. Diluted bleach solutions up to 20% for cleaning difficult stains.
SUSTAINABILITY 6% recycled content. Third party certified, SCS Indoor Advantage™ Gold
NOTE Additional colors available. See website.



ACT® Registered Certification Marks