

STUDIO CONFERENCE TABLES
LIST PRICES EFFECTIVE
FEBRUARY 1, 2024

STUDIO
CONFERENCE
TABLES



2 0 2 4



Conference Table Sustainability

**ANSI/BIFMA e3-2014e
LEVEL® Furniture
Sustainability Standard
and Certification**

A majority of HBF's products have met the necessary qualifications to achieve LEVEL® certification. LEVEL® is the multi-attribute sustainability certification based on the ANSI/BIFMA e3 Furniture Sustainability Standard. The standard and certification were created to deliver the most open and transparent means of evaluating and communicating the environmental and social impacts of furniture products in the built environment. Taking into account a company's social actions, energy usage, material selection and human and ecosystem health impacts, LEVEL® addresses how a product is sustainable from multiple perspectives. The organization, facilities, and products are audited on an annual basis to ensure ongoing compliance and improvement.

With LEVEL®, customers can make informed choices about sustainable commercial office furniture. The LEVEL® mark identifies that a product has been vetted by an independent third party certifier and its numeric marking of 1, 2, or 3 indicates the threshold of certification the product has achieved. A majority of HBF's seating, occasional tables, and conference lines are LEVEL® certified. Please download the certificates from our product pages for the complete details. For more information about the ANSI/BIFMA LEVEL® standard, visit www.levelcertified.org.



Conference Table Finish Options + GSA Information

Veneer and Finishes

Wood owes its inherent beauty to variations in color, grain, and texture; therefore, these variations are not considered defects. Due to the natural color and grain variances of wood the final finish color, texture and grain may vary from one furniture piece to another even though they are finished at the same time. Exposure to light and the aging process will cause changes in surface color of natural wood products. Light finishes on wood products do not mask the natural characteristics of wood. HBF does not guarantee the exact matching of grain, pattern and color.

An upcharge of **10% Net** per unit for conference tables, with a minimum upcharge of **\$500 Net** per order, will apply for any custom wood finish.

Refer to the following page for product material options.

GSA/Federal Contract Information:

GSA Contract Number 47QSMA22D08P9

Model numbers identified with the following verbiage “When purchased separately without a configurable TAA compliant end product, not on GSA contract” is to mean that these configurable parts or components:

- Have no functionality or capability without being integrated into an end product; and
 - Are considered **Open Market** if purchased without a configurable TAA compliant end product.
-



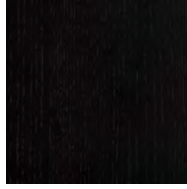
ASH: (AH) FINISHES



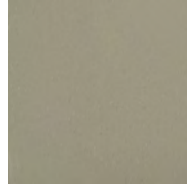
AH310
Smoke Opaque



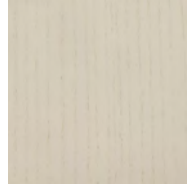
AH400
Clear



AH402
Black Opaque



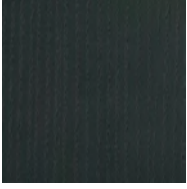
AH403
Grey Opaque



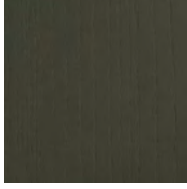
AH404
Warm White Opaque



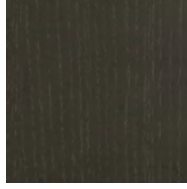
AH405
Mist Opaque



AH406
Denim Opaque



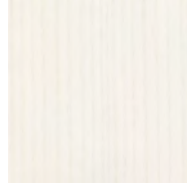
AH407
Pewter Opaque



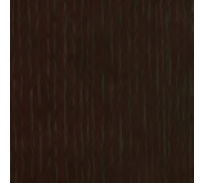
AH408
Peppercorn Opaque



AH901
Amber



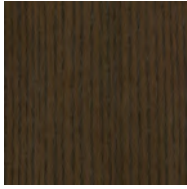
AH902
Designer White Opaque



AH911
Warm Brick



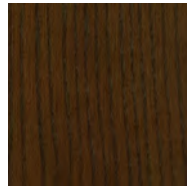
AH929
Nutmeg



AH937
Bark



AH984
Dark Roast



AH993
Sumatra

Screen images are intended as a guide only and should not be regarded as absolutely correct.
For exact color/texture, please visit www.hbf.com to request an actual sample.

Studio Table Series Specifications

Height Standing Height**Shape** Rectangular | Racetrack**Wood** Solid Ash**Power Cover** Powder Coat | Leather w/Powder Coat | Plated

Black Powder Coat



White Powder Coat

Grey Leather with
Parchment Powder CoatCream Leather with
Parchment Powder CoatCamel Leather with
Parchment Powder Coat

Bronze Plated



Studio Standing Table



<i>Style Number</i>	<i>Top Description</i>	<i>List Price</i>	<i>OH</i>	<i>OD</i>	<i>OW</i>	<i>Shipping Weight</i>	<i>Cube</i>
HTG11701E-424096	<i>wood</i>	11,840	42	40	96		

*Ash
Rectangular Top*

PLEASE SPECIFY THE FOLLOWING TO ORDER: _____

MODEL NUMBER	SPECIES & FINISH
	Options for wood finishes: AH = Ash
	310 = Smoke Opaque
	400 = Clear
	402 = Black Opaque
	403 = Grey Opaque
	404 = Warm White Opaque
	405 = Mist Opaque
	406 = Denim Opaque
	407 = Pewter Opaque
	408 = Peppercorn Opaque
	901 = Amber
	902 = Designer White Opaque
	911 = Warm Brick
	929 = Nutmeg
	937 = Bark
	984 = Dark Roast
	993 = Sumatra

HTG11701E-424096.Finish

Example: HTG11701E-424096.AH400



Studio Standing Table



Style Number	Top Description	List Price	OH	OD	OW	Shipping Weight	Cube
HTG11702E-424096	wood, with power	13,240	42	40	96		

Ash
Rectangular Top

PLEASE SPECIFY THE FOLLOWING TO ORDER: _____

MODEL NUMBER	SPECIES & FINISH	POWER COVER
	Options for wood finishes: AH = Ash	Options for power cover finishes:
	310 = Smoke Opaque	ABL1 = Black Powder Coat
	400 = Clear	AWL1 = White Powder Coat
	402 = Black Opaque	AGL1 = Grey Leather with Parchment Powder Coat +\$490
	403 = Grey Opaque	ACL1 = Cream Leather with Parchment Powder Coat +\$490
	404 = Warm White Opaque	ACA1 = Camel Leather with Parchment Powder Coat +\$490
	405 = Mist Opaque	ABZ1 = Bronze Plated +\$490
	406 = Denim Opaque	
	407 = Pewter Opaque	
	408 = Peppercorn Opaque	
	901 = Amber	
	902 = Designer White Opaque	
	911 = Warm Brick	
	929 = Nutmeg	
	937 = Bark	
	984 = Dark Roast	
	993 = Sumatra	

HTG11702E-424096.Finish.Power Example: HTG11702E-424096.AH400.ABL1



Studio Standing Table



Style Number	Top Description	List Price	OH	OD	OW	Shipping Weight	Cube
HTG11701N-4248104	wood	12,040	42	48	104		

Ash
Racetrack Top

PLEASE SPECIFY THE FOLLOWING TO ORDER: _____

MODEL NUMBER	SPECIES & FINISH
	Options for wood finishes: AH = Ash
	310 = Smoke Opaque
	400 = Clear
	402 = Black Opaque
	403 = Grey Opaque
	404 = Warm White Opaque
	405 = Mist Opaque
	406 = Denim Opaque
	407 = Pewter Opaque
	408 = Peppercorn Opaque
	901 = Amber
	902 = Designer White Opaque
	911 = Warm Brick
	929 = Nutmeg
	937 = Bark
	984 = Dark Roast
	993 = Sumatra

HTG11701N-428104.Finish

Example: HTG11701N-428104.AH400



Studio Standing Table



Style Number	Top Description	List Price	OH	OD	OW	Shipping Weight	Cube
HTG11702N-4248104	wood, with power	13,970	42	48	104		

Ash
Racetrack Top

PLEASE SPECIFY THE FOLLOWING TO ORDER: _____

MODEL NUMBER	SPECIES & FINISH	POWER COVER
	Options for wood finishes: AH = Ash	Options for power cover finishes:
	310 = Smoke Opaque	ABL1 = Black Powder Coat
	400 = Clear	AWL1 = White Powder Coat
	402 = Black Opaque	AGL1 = Grey Leather with Parchment Powder Coat +\$490
	403 = Grey Opaque	ACL1 = Cream Leather with Parchment Powder Coat +\$490
	404 = Warm White Opaque	ACA1 = Camel Leather with Parchment Powder Coat +\$490
	405 = Mist Opaque	ABZ1 = Bronze Plated +\$490
	406 = Denim Opaque	
	407 = Pewter Opaque	
	408 = Peppercorn Opaque	
	901 = Amber	
	902 = Designer White Opaque	
	911 = Warm Brick	
	929 = Nutmeg	
	937 = Bark	
	984 = Dark Roast	
	993 = Sumatra	

HTG11702N-428104.Finish.Power Example: HTG11702N-428104.AH400.ABL1