

HBF TEXTILES

Stardust 1070

Upholstery

53% Polyester Ultraviolet,
33% Polyester, 14%
Recycled Polyester, and
1% Nylon

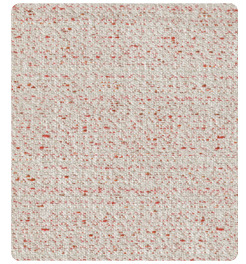
Erin Ruby



1070-11
Travertine



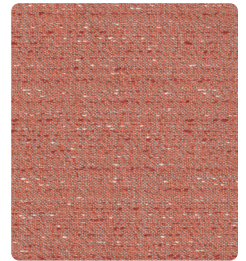
1070-81
Mica



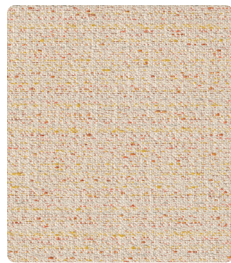
1070-18
Sonar



1070-85
Sterling



1070-43
Carnelian



1070-23
Citrine



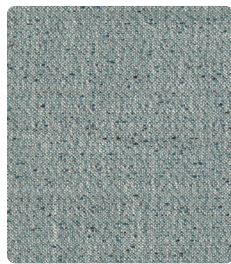
1070-54
Aura



1070-20
Bronzite



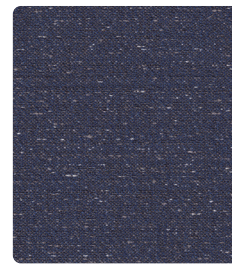
1070-36
Henna



1070-56
Fluorite



1070-68
Labradorite



1070-59
Blue Agate



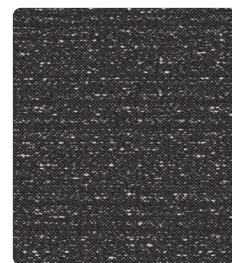
1070-84
Galaxy



1070-80
Ether



1070-98
Obsidian



1070-90
Cosmos

Stardust 1070

DESIGNER

Erin Ruby

APPLICATION

Upholstery

CONTENT

53% Polyester Ultraviolet, 33% Polyester,
14% Recycled Polyester, less than 1% Nylon

WIDTH

57" W

REPEAT

None

FINISH

None

BACKING

Acrylic

ABRASION

63,000 double rubs (Wyzenbeek)

ORIGIN

United States

FLAME RESISTANCE

California TB 117-2013 Section 1 compliant,
NFPA 260 (UFAC Class 1)

MAINTENANCE

WS: Clean with upholstery shampoo or mild dry
cleaning solvent.

SUSTAINABILITY

Third party certified, SCS Indoor Advantage
Gold. Meets HCWH Healthy Interiors Criteria.

NOTES

Bleach cleanable.



ACT® Registered Certification Marks