

# HBF TEXTILES

## Goosebumps 1068

---

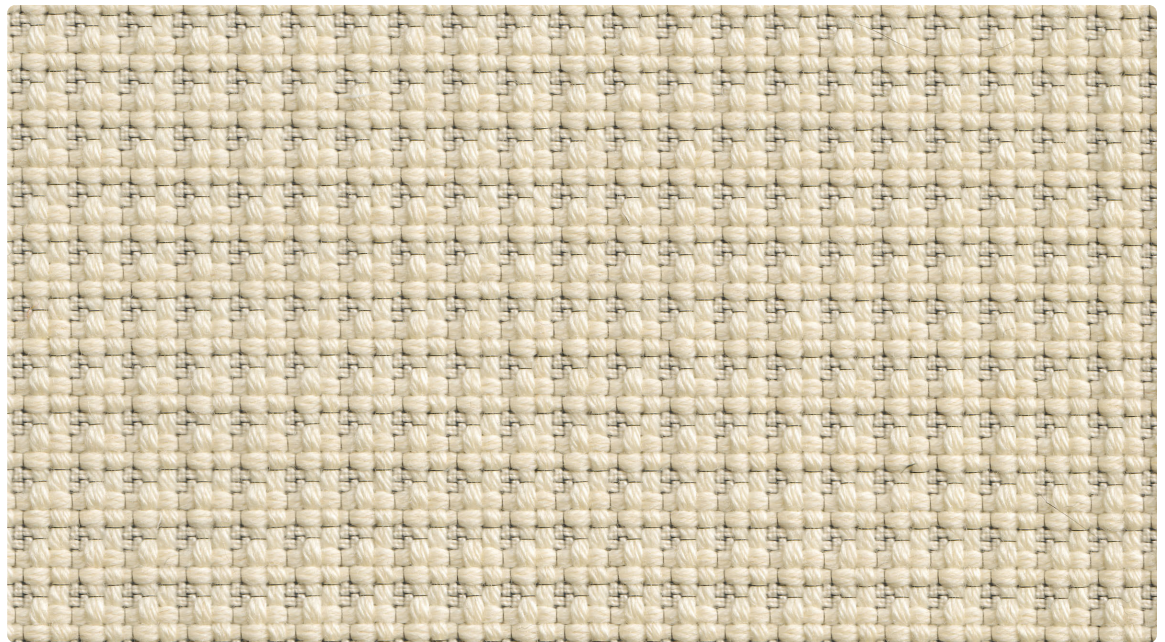
Upholstery

---

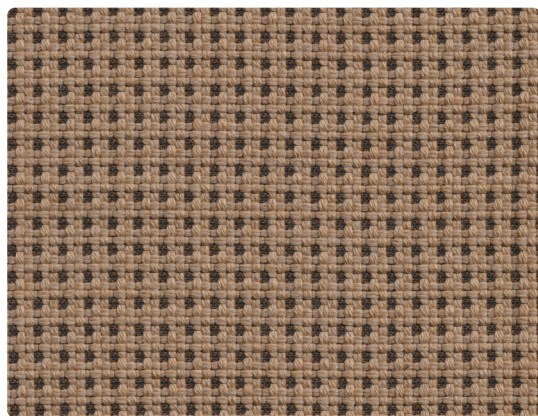
83% Wool, 14% Cotton,  
3% Nylon

---

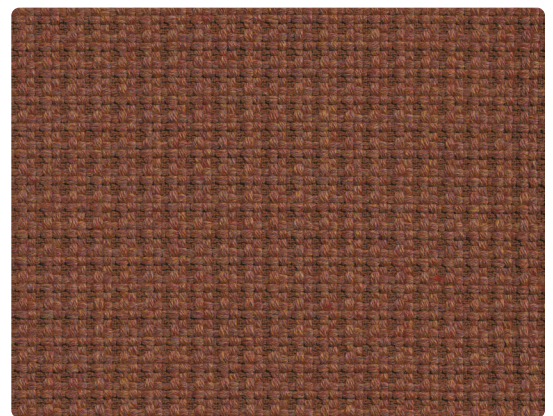
Erin Ruby



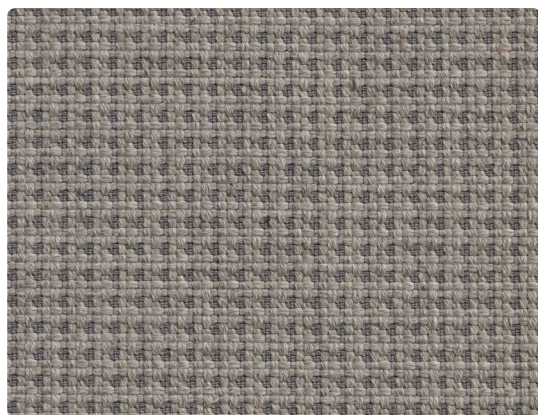
**1068-11**  
Travertine



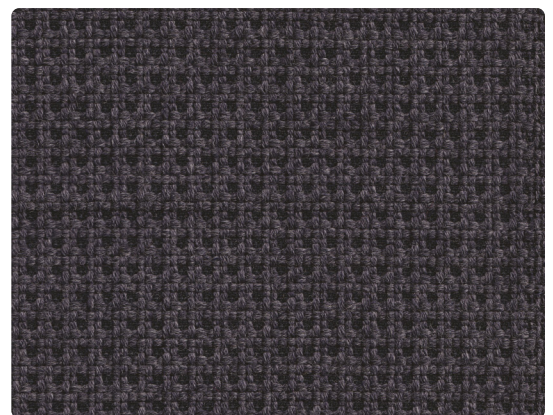
**1068-20**  
Bronzite



**1068-36**  
Henna



**1068-80**  
Goose



**1068-98**  
Obsidian

# Goosebumps 1068

## DESIGNER

Erin Ruby

## APPLICATION

Upholstery

## CONTENT

83% Wool, 14% Cotton, 3% Nylon

## WIDTH

54" W

## REPEAT

None

## FINISH

None

## BACKING

Acrylic

## ABRASION

100,000 double rubs (Wyzenbeek)

## ORIGIN

United States

## FLAME RESISTANCE

California TB 117-2013 Section 1 compliant,  
NFPA 260 (UFAC Class 1)

## MAINTENANCE

S: Clean with mild dry cleaning solvent

## SUSTAINABILITY

Third party certified, SCS Indoor Advantage Gold.  
Meets HCWH Healthy Interiors Criteria.

