

# CAPSULE

BY Allsteel®

PDF updated June 7, 2023

# Capsule by Allsteel™

---

## An Evolving Collection

A capsule wardrobe is a limited selection of quality, interchangeable clothing pieces that complement one another, with moments of delight added each season.

Twice a year, Allsteel will introduce a Capsule collection to complement Allsteel's core workplace solutions and offer authentic design and choice.

CAPSULE BY ALLSTEEL OVERVIEW .....2

**CAPSULE SPRING 2023 COLLECTION –  
DESIGNED FOR FURTHER™ BENCHING**

Overview Spring 2023 .....6  
Statement of Line .....8  
Specification Rules .....12  
How to Specify and Order .....17  
Warranty, Pricing, and FAQ.....19  
Finishes.....21  
Installation Instructions.....27

**CAPSULE FALL 2022 COLLECTION –  
DESIGNED FOR FIT™ PANEL SYSTEM**

Overview Fall 2022 .....32  
Statement of Line .....33  
Specification Rules ..... 43  
How to Specify and Order .....49  
Warranty, Pricing, and FAQ.....51  
Finishes.....53  
Shaker Rail Peg Installation Instructions.....55



**DESIGNED BY MASHstudios**  
**Capsule, Spring 2023 Collection**

## Product Story

The Capsule Spring 2023 Collection is conveniently compatible with the Allsteel Further™ benching system and the Mural™ desktops and privacy screens, providing a versatile portfolio of warm, natural components that invite workers to a humanized workplace.

The Collection includes a Solid Wood Beam Ledge that mounts atop the Further beam using a Beam Connector that is either flush with the top or one that accepts a Mural screen frame. The Solid Wood Worksurface is compatible with the Altitude® Height-Adjustable table, with either the C Base or the T Base foot options. The natural Cork Grommet nests in the power bay grommet in the Capsule solid wood worksurface and is also compatible with the Mural Power Bay grommet and Mural tops.







Solid Wood Worksurface



Solid Wood Beam Ledge



Cork Grommet



Beam Connector Receiver



Beam Connector Cap





## Solid Wood Worksurface

Base Model | SLDWDWKSF

### Widths

.60" wide x 30" deep

.72" wide x 30" deep

### Options | Solid Wood

.WOK – White Oak

Sample SKU | SLDWDWKSF.60.WOK

Dimensions | 1.25" thick, 59 lbs. (60"W), 71 lbs. (72"W)

Cut out: 11 $\frac{1}{8}$ " long x 3 $\frac{1}{2}$ " wide

Notes | The solid wood worksurface can be paired with A6 height-adjustable table C and T-foot base.

Worksurface is undersized by 1" on each side.

The 72" worksurface requires a horizontal stiffener, model Z5SC72, and will be automatically added by CET.

Worksurfaces of both sizes (60" and 72") will require a vertical stiffener that runs crossways to the grain. It is automatically added in CET as a standard special model SPLA-ATA-ACC.M573469.PAINT



## Cork Grommet

Base Model | CORKGROMMT

### Options | Cork

.N – Natural

Sample SKU | CORKGROMMT.N

Dimensions | 15" long x 4" wide x 1" deep

Insert: 11 $\frac{3}{8}$ " wide x 0.2" deep

Notes | The cork grommet is compatible with Solid Wood Worksurface and can also be used with Mural power bay tops.

The grommet features a wire management mouse hole and provides access for 6-7 cords.



## Solid Wood Beam Ledge

Base Model | *BEAMLDG*

Widths

.54" *W*

.66" *W*

Options | *Solid Wood*

.WOK – *White Oak*

Sample SKU | *BEAMLDG.54.WOK*

Dimensions | 6.5" deep x 0.75" high

Notes | *For use with a 54" (UN6B54P or UN6B54N) and 66" (UN6B66P or UN6B66N) Further beam.*

*Compatible with standard height linear, fixed standard height square hub applications.*

*Must be specified with Mural screen frame and Beam Connector or Beam Connector Cap to connect the ledge to the Further beam.*

*Load capacity of 25 lbs.*



## Beam Connector

Base Model | *SCRNFRMCNCTR*

Options | *Painted Metal*

.BLK – *Black*

.WHI – *White*

Sample SKU | *SCRNFRMCNCTR.WHI*

Dimensions |

Notes | *Beam connectors come individually. Two must be ordered per beam.*

*Metal connector attaches Mural screen frame to Further beam.*

*Must be specified with Mural Screen Frame.*



## Beam Connector Cap

Base Model | BEAMCNCAP

Options | *Painted Metal*

.BLK – Black

.WHI – White

Dimensions |

Sample SKU | BEAMCNCAP.BLK

Notes | *Beam Connector Caps come individually. Two must be ordered per beam.*

*The Beam Connector Cap connects the Beam Ledge to the Further beam where a Mural screen frame is not needed.*

## Working with Solid Wood Worksurfaces and Cork Grommet

- Solid Wood Worksurfaces are pre-drilled with mounting locations for A6 base. See chart below for specification options available.
- Tops are undersized and can only be used on the A6 height adjustable base.
- Solid wood tops are not applicable with Further Adaptive or Further benching.
- The Cork Grommet accessory is designed to fit in the grommet cut out of the solid wood worksurface to conceal the power bay trough and support user desktop tools.
- The solid wood worksurface will always come with the grommet cutout and is not compatible with other integrated grommets inserts.
- The cork grommet fits in the grommet cutout for both the Capsule Solid Wood Worksurfaces and Mural Laminate Worksurfaces with Mural Power Bay.
- Specification details for standard product can be found in the Desking and Benching specification guide.

STANDARD PRODUCT COMPATIBILITY	
FEATURE	COMPATIBILITY
Base Types	A6 Base: 2 Stage, 3 Stage, and Max Base
Feet Types	Standard Glides, Slide Glides, and Casters
Horizontal Stiffeners	60" W: Z5SC60 72" W: Z5SC72 *Required
Vertical Stiffeners	60" W and 72" W: SPLA-ATA-ACC.M573469.PAINT
Accessories	Monitor Arms, Worksurface Power Module, & Desk screens
Storage	The required special stiffener interferes with the undermount storage not allowing them to be mounted to the worksurface.
Wire Management	Mural power bay trough: 60": 20" W – SEDMWM20 72": 30" W – SEDMWM30 Power Module: SEDMUP

Working with Solid Wood Worksurfaces



## Working with Solid Wood Beam Ledge

- The Beam Ledge is connected to the Further beam in two different ways: The combination of the Beam Connector and Mural Screen Frame OR the Beam Mounting Cap.
- The solid wood beam is only available in linear freestanding, square hub applications at standard height. It is not available with Further Adaptive and Further supports other than the square hub.
- The end condition of this application must be end of run hubs.
- The solid wood beam ledge does not interfere with any electrical installed on the Further Beam.
- The beam ledge should overhang ~1/2" from the leg.
- Where two beams connect, the beam ledges will be flush at the center.
- A maximum of three beams can be used per beam run.
- The depth of the beam ledge allows for the Mural planter to add biophilia to the workstation.

**Beam receiver for use with Mural screen frame.**



**Beam cap for use without Mural screen frame.**



## Working with Privacy Screens

- Mural mesh screens can be used on the Mural Screen Frame for a Capsule by Allsteel™ application. The only allowable heights for the screen frame are 34" and 41" and the corresponding screen height must be one size lower. For example, if ordering a 34" screen frame, the accompanying screen must be 26". See below for the allowable sizes.

MESH SCREENS HEIGHT			
FRAME HEIGHT	SCREEN HEIGHT		
	26"H	34"H	41"H
26"	No	No	No
34"	Yes	No	No
41"	Yes	Yes	No
MESH SCREENS WIDTHS			
54"W FRAME	EXAMPLE MODEL		
25W +25W	ASH3425USF		
31W	ASH3431USF		
37W	ASH3437USF		
43W	ASH3443USF		
49W	ASH3449USF		
66"W FRAME	EXAMPLE MODEL		
25W +25W	ASH3425USF		
31W + 31W	ASH3431USF		
25W+31W	ASH3425USF + ASH3431USF		
37W	ASH3437USF		
43W	ASH3443USF		
49W	ASH3449USF		
55W	ASH3455USF		
61W	ASH3461USF		

- Mural laminate, glass markerboard, acrylic, PET, fabric screens, and shelves cannot be used with Further Beam.
- Mural Screen frames will only be compatible with Further with the solid wood beam installed.
- For more details on Allsteel Standard Product, reference the Desking and Benching specification guide.

## Working with Privacy Screens

- Mural laminate, glass markerboard, acrylic, PET, fabric screens, and shelves cannot be used with Further Beam.
- Mural Screen frames will only be compatible with Further with the solid wood beam installed.
- For more details on Allsteel Standard Product, reference the Desking and Benching specification guide.



The square connectors designed for the standard Mural workstations are not needed and can be removed in installation.



# HOW TO SPECIFY AND ORDER

1. Capsule by Allsteel is included in the Allsteel extension in CET for ease of visualization and specifying Capsule by Allsteel products in conjunction with Allsteel products.
2. Draw your preferred workstations in CET, using any combination of standard Allsteel products and Capsule by Allsteel products.
3. Order Allsteel products, including any specials, through your normal process.
4. When any Capsule product is added to the drawing, a new article view is pre-filtered for Capsule by Allsteel Products will display in the Calculation Window.
5. When reviewed, Click Export to create a SIF file. Save the SIF file to your computer in your preferred location.
6. Login to Design Public Group [designpublicgroup.com](https://designpublicgroup.com).
7. Open an existing quote or start new.
8. Click to import SIF.
9. The correct net pricing will display in DPG.
10. Follow standard order process in DPG to complete Capsule order.

# WARRANTY, PRICING, AND FAQ

## Warranty

MASH Studios offers the following warranty on its products sold through the Capsule by Allsteel collection.

- All our products are covered by a one-year warranty against defects in manufacturing and workmanship from the date of purchase. This warranty applies to the initial purchaser and is valid as long as they own the merchandise.
- The warranty covers any damage or defect resulting from the manufacturing process, provided the product was used under normal conditions and for the purposes for which it was designed. Please note that the warranty does not cover normal wear and tear, damage caused by misuse, abuse, or negligence, or damage resulting from improper assembly, cleaning, or maintenance.
- In the event of a manufacturing defect or damage, MASH will replace the item at no charge. We require digital images of the manufacturing damages before replacement shipments can be processed.
- Please note that MASH makes no other warranties, either expressed or implied, including warranties of merchantability and fitness for any particular purpose. MASH will not be liable for incidental or consequential damages arising from any product defect.
- If you have any problems with your furniture, please notify us as soon as possible. We will replace or repair any goods that are damaged or defective upon delivery, or refund the amount paid for the goods in question. MASH will not be liable for any loss of profits, administrative inconvenience, disappointment, indirect or consequential loss or damage arising out of any problem in relation to the goods.
- MASHstudios incorporates natural materials into its products. The natural beauty of the wood results in random variation in color and pattern. This variation, which is kept within acceptable limits, is an integral part of the appearance of the furniture and is to be expected. In addition, the finishes are subject to color change depending on age and exposure to light.
- To submit a warranty claim, email [support@designpublicgroup.com](mailto:support@designpublicgroup.com)

## Standard Pricing

- All products in the Capsule by Allsteel collection are priced through Design Public Group. Log in to your account and upload a SIF File or select products from the Capsule by Allsteel brand in DPG.
- Net pricing can be seen on an individual product page or by creating a full quote.

## Special Pricing

- Contact your Allsteel sales representative to inquire about special pricing for large project opportunities.

## Freight

- All freight is handled by Design Public Group. When a quote is saved in DPG, the freight quote is automatically generated.

## Exclusivity

- Capsule by Allsteel™ products are exclusive to Allsteel dealers only.

## Product Information and Order Support

- Products in Capsule by Allsteel collection are sold and supported by Design Public Group.
- For specification or general questions about products in the Capsule by Allsteel collection, contact your Allsteel sales representative.
- For questions about product lead time or freight, email your DPG rep at [support@designpublicgroup.com](mailto:support@designpublicgroup.com).
- Samples are fulfilled by Allsteel and can be ordered through [allsteeladvantage.com](http://allsteeladvantage.com).
- For questions about your Capsule by Allsteel order, email [support@designpublicgroup.com](mailto:support@designpublicgroup.com).

## General

Capsule by Allsteel™ products are designed to offer new style options for Allsteel's Further product line. This collection is designed by MASHstudios and sold via Design Public Group. Orders for Allsteel standard product will follow standard Allsteel ordering processes. Capsule by Allsteel™ products will not be serviced or supported by Allsteel's Customer Experience team.

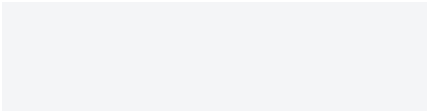
# FINISHES

## Wood

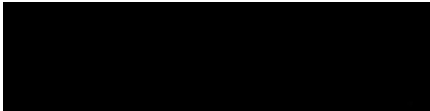


White Oak

## Painted Metal



Designer White



Black

## Cork



Natural Cork

# CARE INSTRUCTIONS

## Finished Millwork (Solid Wood Worksurfaces, Beam Ledge)

### *Routine Maintenance*

- To clean, use a damp cloth with a mild detergent. We recommend using a boiled linseed oil (non-slow absorbing variety) every 3-6 months or as needed to return the wood to its original luster. Wipe the entire surface that you are refinishing to get the best results. Once the oil has cured into the wood (after roughly 15 minutes), any excess can be wiped off using a second clean, dry cloth.
- Do not pour the oil directly onto the product, as it could leave an uneven coat causing discoloration in the wood. Please note, every piece of furniture is unique and will respond differently to various wood refinishing products.

### *Care*

- It is wood's natural property to lighten when exposed to sunlight. If a piece is kept in partial sunlight, the UV rays can lighten the exposed area, creating a more pronounced variation in the wood grain. We recommend keeping your pieces in either full or completely out of sunlight to create a more even tone across your piece. Please be aware, if objects rest on the sunlit surface, the covered surface will remain lighter once it is moved. This light spot will take time to blend back into the surrounding area and may not fully be as dark. We recommend using coasters to prevent drink/condensation rings from forming. Dish pads should also be used to prevent hot dishes from burning/darkening the wood tone. Wipe up any spills immediately, as the liquid might cause damage and discoloration if it seeps into the wood. Avoid placing rubber or plastic products directly on the wood, as these can cause damage to the finish. Use a protective sheet, like a cloth or felt, in between the two pieces.

### *Stain Removal*

- If you encounter any stains, like a watermark from a glass, lightly sand the affected area using 220 grit sandpaper. Sand with the grain (we recommend wrapping the paper around the straight edge of a wood block, as this keeps even pressure). Once you have sanded below the blemish and/or the clear coating, you will have reached the raw wood. We recommend reapplying a coating of water-based polyurethane finish (non-slow absorbing variety), which is relatively affordable and widely available at most home improvement and hardware stores. To apply water-based polyurethane finish, we recommend applying it to a clean, dry, lint-free cloth first, then applying it to the wood surface. Once the finish has cured into the wood (after roughly 15 minutes), any excess can be wiped off using a second clean, dry cloth.



## Cork

### Care

- To clean, use a damp cloth (cold or warm water) and a standard non-toxic soap. Cork is naturally hydrophobic, so will resist water absorption. Allow to air dry.
- Cork does not need any conditioning or treatment. It will maintain its subtle softness throughout its life while developing a natural patina. Color changes are likely to occur over time with exposure to natural light, and especially so when in contact with direct sunlight. This will have the effect of lightening the surface's color. Cork has a UV resistance of 5-6 on the UV scale.



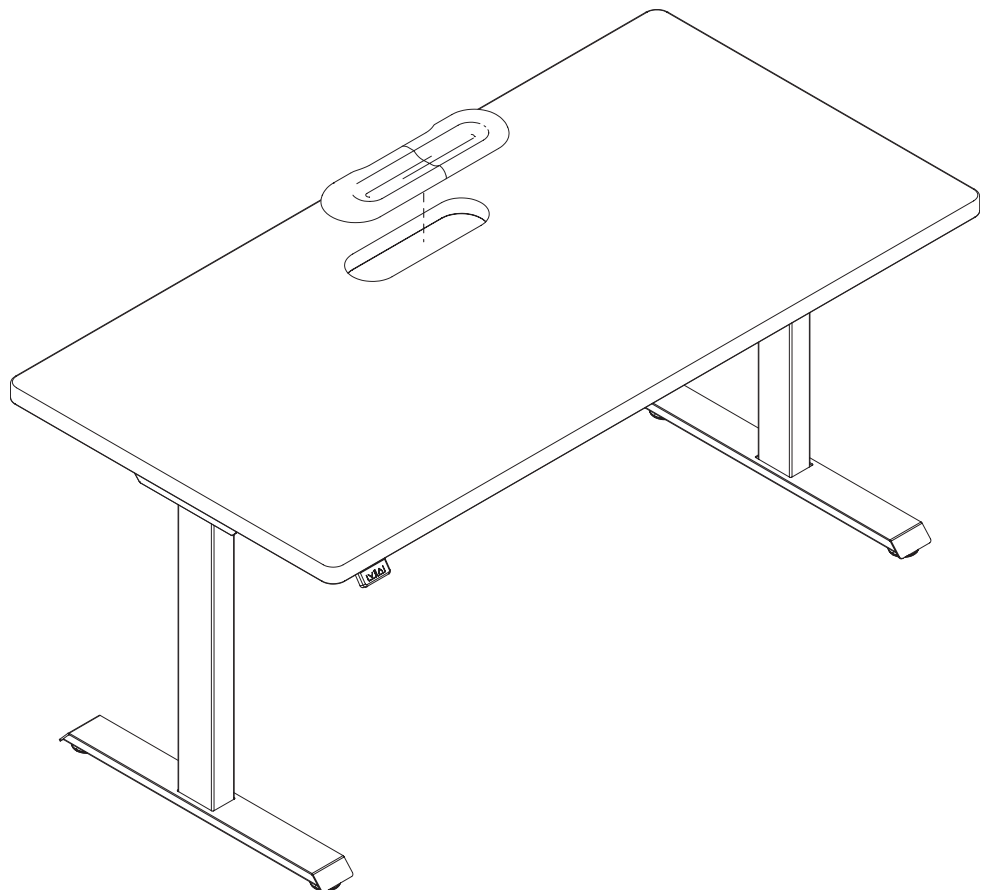
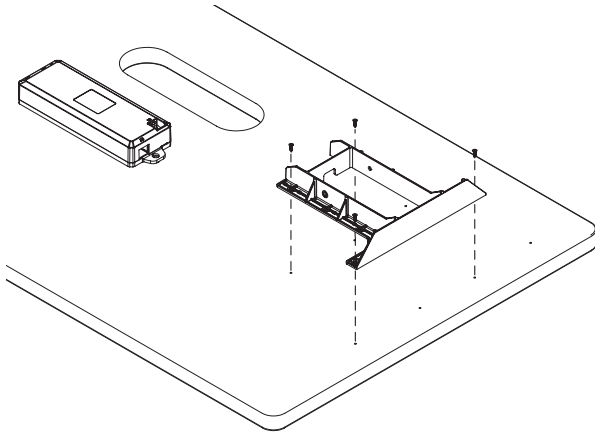
# INSTALLATION INSTRUCTIONS

**Tools Needed:**

Phillips Screwdriver

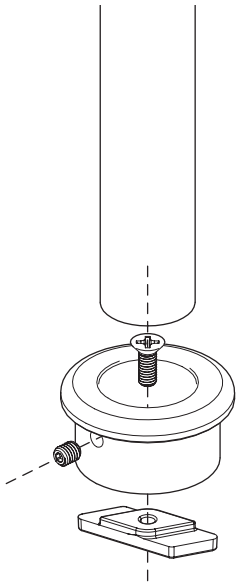
Drill

¼" Hex Drive



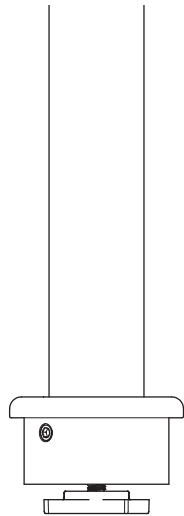
**Notes:**

- Mounting Hardware & install instructions included with lifting columns.
- Desktop insert (Cork) fits into desktop's grommet.
- Lifting column's brackets mount to desktop's underside holes.
- Failure to install product as instructed, use of hardware other than that which is provided, or failure to comply with instructions can result in product failure, personal injury, or property damage.



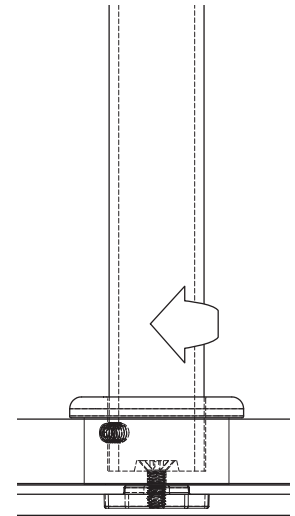
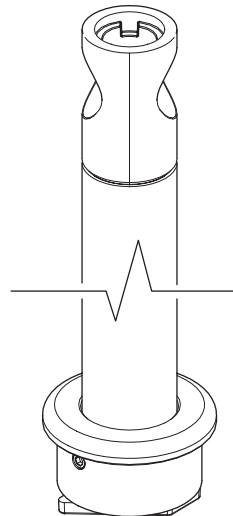
**Step 1:** Thread flat head screw tightly into base of cup.

**Step 2:** Insert framing post and affix with set screw.



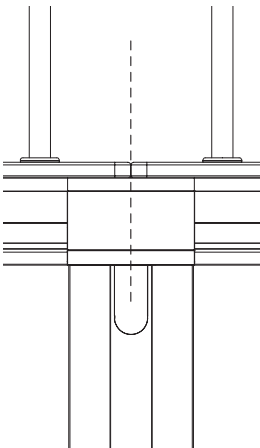
**Step 3:** Thread cinch tab to screw (leave gap between it and cup's bottom).

**Step 4:** Ensure the cinch tab is aligned with the pole's orientation.

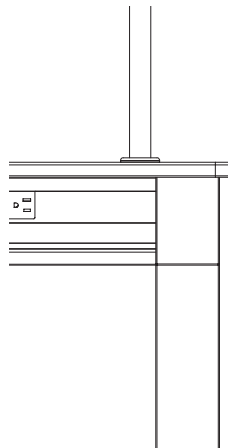


**Step 5:** Mount to rail – through the ledge – and tighten by rotating the pole clockwise.

**Step 6:** Stop tightening when pole is locked to rail and orientated to receive framing crossbar.



**Mid Condition:**  
Ledge ends can meet – centered – over the leg.



**End Condition:**  
Ledge should overhang ~1/2" from leg.

**Hardware Included:**

- Flat Head Screw
- Set Screw
- Cinch Tab

**Tools Needed:**

- Phillips Screwdriver
- 3/32" Hex Allen Wrench
- Rubber Mallet

**Note:**

- Failure to install product as instructed, use of hardware other than that which is provided, or failure to comply with instructions can result in product failure, personal injury, or property damage.



**DESIGNED BY CORRAL**  
**Capsule, Fall 2022 Collection**

### Product Story

The Fall 2022 collection was inspired by the simple rail-and-peg system developed by the Shakers as a way for everyday objects to be neatly stored and displayed.







Shaker Rail Hanging Pegboard



Shaker Rail Hanging Pegboard Mini Peg



Shaker Rail Hanging Pegboard Shelf



Shaker Rail Peg



Shaker Rail Hanger



Shaker Rail Hanging Corkboard



Shaker Rail Hanging Whiteboard



Display Marker Tray



Shaker Rail Hanging Tray



Shaker Rail Hanging Plant Bin



Gallery Panel Planter



PET Desk Privacy Screen



## Shaker Rail Peg

Base Model | SHARAIPEG

Options | *Solid Wood*

- .ASH – Ash (Minimum Order Quantity: 5)
- .WOK – White Oak (Minimum Order Quantity: 100)
- .WAL – Walnut (Minimum Order Quantity: 100)
- .BLK – Painted Black (Minimum Order Quantity: 100)
- .WHI – Painted White (Minimum Order Quantity: 100)
- .CUS – Custom RAL Paint (Minimum Order Quantity: 100)

Sizes | *One Size: 3½" x 1½" dia.*

Sample SKU | SHARAIPEG.ASH

Notes | *Order in quantities of 1; includes hardware pack to insert into Fit panel.*



## Shaker Rail Hanging Pegboard

Base Model | SHARAIPEGPAN

Sizes

- .3W – Triple – **32" (nominal of 31.8")** wide x 18" high

Options | *Wood Veneer*

- .ASH – Ash
- .WOK – White Oak
- .WAL – Walnut

**OR**

*Laminate*

- .BW – Wilsonart Beigewood
- .NR – Wilsonart Natural Recon
- .NW – Wilsonart Natural Walnut
- .DW – Designer White
- .BL – Black

Sample SKU | SHARAIPEGPAN.3W.ASH

Notes | *Comes with 4 pegs and 1 shelf, all re-positionable.*

*Mini pegs and shelf come in Ash only, regardless of finish chosen for the pegboard.*



## Shaker Rail Hanging Pegboard Mini Peg

Base Model | SHARAIMINPEG

Options | *Solid Wood*

.ASH – Ash

Sizes | *One Size: 4" long x 1" dia.*

Sample SKU | SHARAIMINPEG.ASH

Notes | *Minimum order quantity: 4. Mini Pegs can be ordered separately to add to the Pegboard if additional pegs are desired. Mini Peg comes in Ash finish only.*



## Shaker Rail Hanging Pegboard Shelf

Base Model | SHARAIPEGSHE

Options | *Solid Wood*

.ASH – Ash

Sizes | *One Size: 21" long x 4½" wide*

Sample SKU | SHARAIPEGSHE.ASH

Notes | *Pegboard Shelf can be ordered separately to add to the Pegboard if additional shelves are desired. Shelf comes in Ash finish only.*



## Shaker Rail Hanger – Single-Sided

Base Model | SHARAIHANSIN

### Sizes

.2W - Double – 22" wide x 4" high

.3W - Triple – 33" wide x 4" high

### Options | Painted Metal

.BLK – Black

.WHI – White

.BRI – Brick

.CUS – Custom RAL

Sample SKU | SHARAIHANSIN.2W.BLK

Notes | *Minimum order quantity: 35*

*Custom paint finish may require higher minimum; request special pricing.*



## Shaker Rail Hanger – Double-Sided

Base Model | SHARAIHANDOU

### Sizes

.2W - Double – 22" wide x 4" high

.3W - Triple – 33" wide x 4" high

### Options | Painted Metal

.BLK – Black

.WHI – White

.BRI – Brick

.CUS – Custom RAL

Sample SKU | SHARAIHANDOU.2W.BLK

Notes | *Minimum order quantity: 35*

*Custom paint finish may require higher minimum order; request special pricing.*



## Shaker Rail Hanging Corkboard

Base Model | SHARAI COR

Options | n/a

Sizes

.1W – Single – 10¼" wide x 18" high

.2W – Double – 21" wide x 18" high

.3W – Triple – 32" (nominal of 31.8") wide x 18" high



Sample SKU | SHARAI COR.1W

Notes | Metal marker tray can be ordered separately and installed in the field.



## Shaker Rail Hanging Whiteboard

Base Model | SHARAI WHI

Options | n/a

Sizes

.2W – Double – 21" wide x 18" high

.3W – Triple – 32" (nominal of 31.8") wide x 18" high



Sample SKU | SHARAI WHI.2W

Notes | Metal marker tray can be ordered separately and installed in the field. Markerboard is laminate.



(This model is for tray only; shown for reference on Whiteboard)

## Display Marker Tray

Base Model | SHARAITRY

### Sizes

.2W – Double – 18" wide x ¾" high

.3W – Triple – 28¾" wide x ¾" high

### Options | Painted Metal

.BLK – Black

.WHI – White

.BRI – Brick

.CUS – Custom RAL

Sample SKU | SHRAITRY.2W.BLK

Notes | Optional accessory for cork or whiteboard display. Includes hardware pack to be installed in the field.

Minimum order quantity: 35

Custom paint finish may require higher minimum order; request special pricing.



## Shaker Rail Hanging Tray

Base Model | SHARAITRYPAN

### Sizes

.1W – Single – 10¼" wide x 18" high

.2W – Double – 21" wide x 18" high

### Painted Metal

#### Available Finishes |

.BLK – Black

.WHI – White

.BRI – Brick

.CUS – Custom RAL

Sample SKU | SHARAITRYPAN.1W.BLK

Notes | Wood tray available in ash wood only.

Minimum order quantity: 35

Custom paint finish may require higher minimum order; request special pricing.



## Shaker Rail Hanging Plant Bin

Base Model | SHARAIPLA

### Sizes

.1W – Single – 6" wide x 13¾" high

.2W – Double – 21" wide x 13¾" high

*Bin Depth: 6"*

*Bin Height: 4¾"*

### Options | Painted Metal

.BLK – Black

.WHI – White

.BRI – Brick

.CUS – Custom RAL

Sample SKU | SHARAIPLA.1W.BLK

Notes | *Includes waterproof liner.*

*Minimum order quantity: 35.*

*Custom paint finish may require higher minimum order; request special pricing.*





## Gallery Panel Planter

Base Model | GALPLA

### Sizes

.M – Medium – 30" wide x 9" high

.L – Large – 47" wide x 9" high

*Planter depth: 6½"*

### Options | Painted Metal

.BLK – Black

.WHI – White

.BRI – Brick

.CUS – Custom RAL

Sample SKU | GALPLA.M.BLK

Notes | *Liner to be provided by customer.*

*Minimum order quantity: 35.*

*Custom paint finish may require higher minimum order; request special pricing.*



## PET Desk Privacy Screen

Base Model | *DESSCRPET*

### Sizes

*.48 – 48" wide x 28¼" high*

*.60 – 60" wide x 28¼" high*

*.72 – 72" wide x 28¼" high*

### Options |

#### *Painted Metal*

*.BLK – Black*

*.WHI – White*

*.BRI – Brick*

*.CUS – Custom RAL*

### **AND**

#### *PET*

*.L – Light*

*.M – Medium*

*.D – Dark*

Sample SKU | *DESSCRPET.48.BLK.L*

Notes | *Minimum order quantity: 50*

*Comes with brown leather straps. Fasten with screws to underside of any Allsteel worksurface or table.*

*Custom paint finish may require higher minimum order; request special pricing.*

## Working with Shaker Rail Components and Fit Panels

- Shaker Rail Pegs can be added to Fit spine and mid-wing panels in widths of 48", 54", 60", 66" and 72".
- Shaker Rail accessories can work with Fit panels in heights of 50" and 57½". No other heights are allowed due to height of accessories conflicting with other components.
  - If utilizing 50" Fit panels, carefully check the application to ensure that the hanging accessories will not conflict with worksurfaces, height-adjustable tables, and storage. Refer to Diagrams 1A and 1B.
- It's recommended to specify the power rail below height-adjustable tables to avoid conflicts with Shaker Rail accessories.
- Choose Fit panels without glass option.
- When using Capsule by Allsteel accessories on Fit panels in conjunction with height-adjustable tables, a gap of at least 1" must be maintained between the Fit panel and the table. This allows for the table to adjust up and down without conflicting with hanging accessories such as the Shaker Rail Hanging Corkboard and Whiteboard. Note that other accessories, such as the Shaker Rail Hanging Plant Bin and the Display Marker Tray protrude farther than 1" and would impede path of travel for a height-adjustable table.

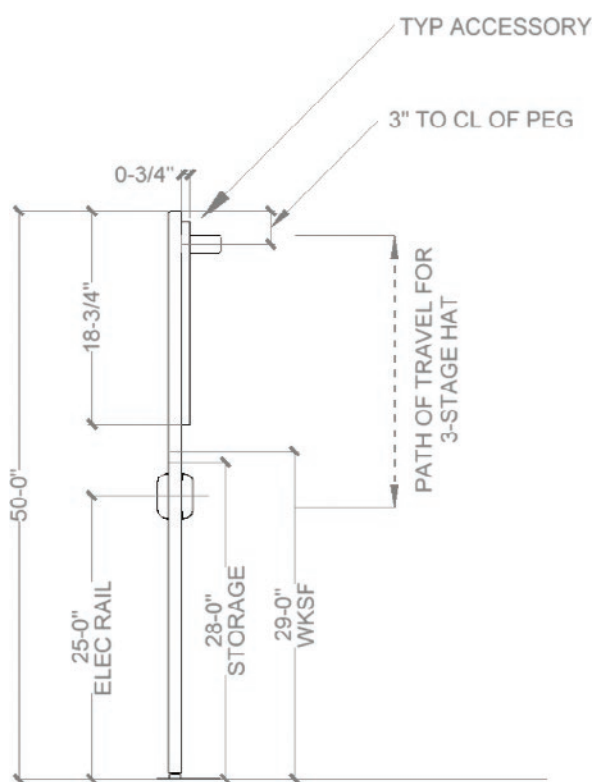


Diagram 1A

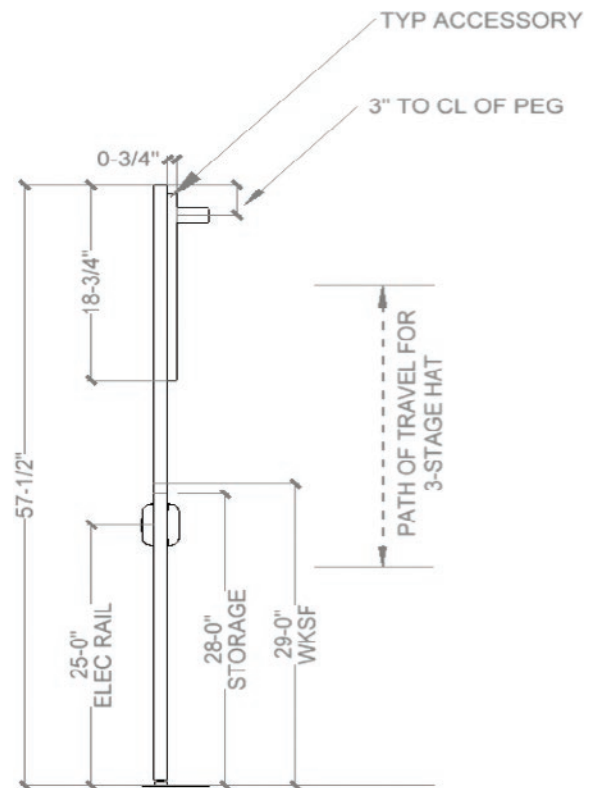
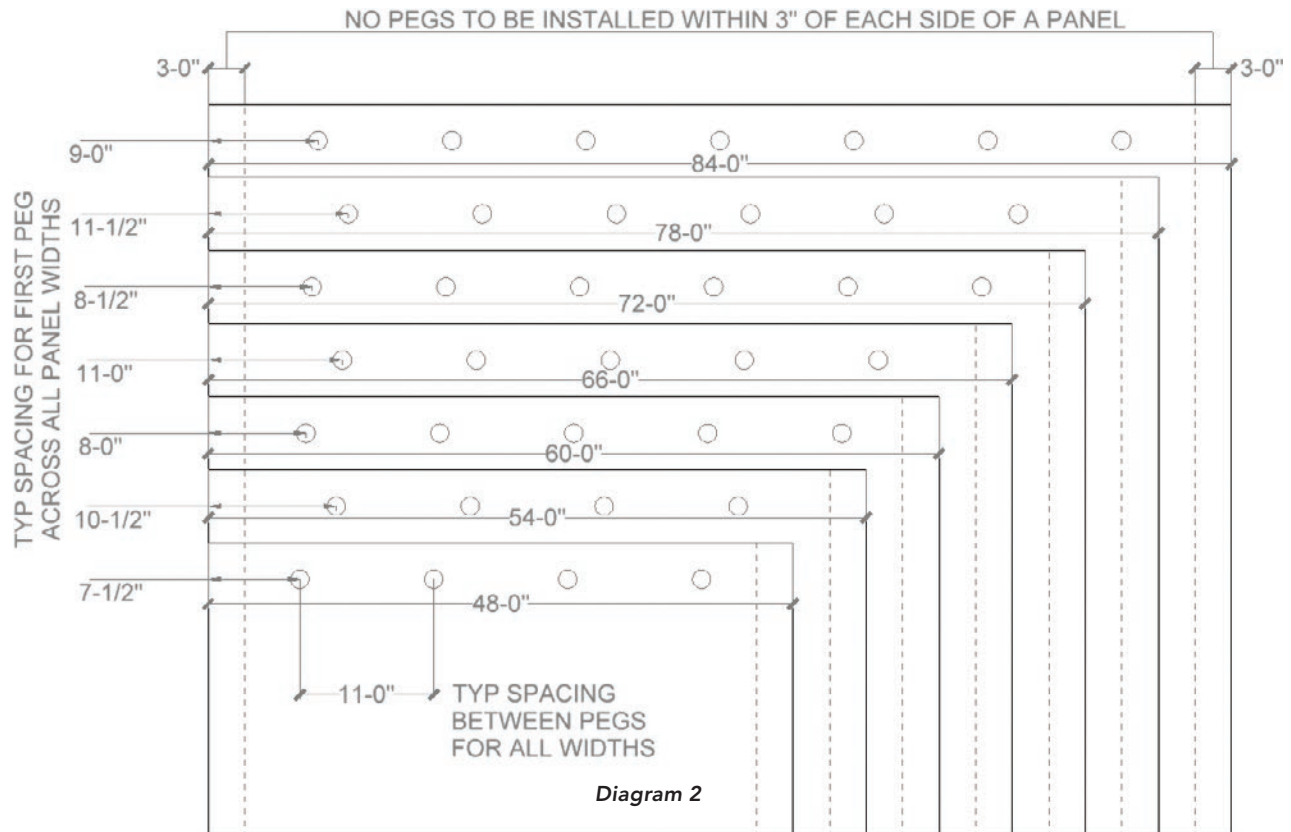


Diagram 1B

## Shaker Rail Pegs on Allsteel Fit Panels

- Shaker Rail pegs will attach to Fit panels at pre-defined locations (see next pages for information on how pegs are installed).
- The location of each peg on a Fit panel cannot be modified. The quantity of pegs on a given panel width is fixed and cannot be modified. Refer to Diagram 2.
- Pegs can be added to one side or both sides of a Fit panel.
- If both sides of panel is specified, pegs are installed back-to-back.
- CET will calculate the number of pegs to be ordered based on panel width, and whether single-sided or dual-sided is chosen. Pegs come in a package quantity of one.
- Each peg includes a hardware pack that contains a threaded insert for installation inside the Fit panel that the peg will screw in to. (See next pages for peg installation options.)



## Shaker Rail Peg Installation Options

There are three methods of adding pegs to a Fit panel in order to utilize the accompanying accessories.

- **Factory-Drilled Holes**

- When specifying this option in CET the Fit panels will follow the process for requesting a special with Tailored Product Solutions. No other special products from Allsteel will be required.

Diagram 3

Type	Closest Model Number	Model Description	Quantity	What would you like?	Ind. Tag	Item Number	Status	ETO SKU	Applied
1	Modification GSYSS784	57.5"H x 84"W Panel	1	GSYSS784.SGSDW.X.LK11.K1.VLG.	-	-	New	-	-

Diagram 4

- **Field-Drilled Holes**

- When specifying this option in CET the Fit panels will be ordered as standard panels.
- One drilling template will be added to the order so holes can be drilled in the field. Refer to the [Installation Instructions](#) page for more information.
- To order extra templates, add SPLA-ACC-GPHARDWARE.M567327.PAINT model number to the picklist.

The image shows a software configuration window with a light green background. It contains several sections of controls:

- FSC:** A checkbox that is currently unchecked.
- Width:** A dropdown menu set to "84-0".
- Height:** Two input fields, the first containing "50-0" and the second containing "57-1/2".
- Glass:** A checkbox that is currently unchecked.
- Electrical Configuration:** Two radio buttons, "Dual Sided" and "Single Sided".
- Electrical Height:** Two radio buttons, "Below Worksurface" and "Below HAT".
- Double Sided:** A checked checkbox.
- Peg Install:** Two radio buttons, "Factory Drilled" and "Field Installed". "Field Installed" is selected.
- Rail Paint, Laminate, Peg Material, Edge:** Each has a color selection box with a small square and the text "Undecided" followed by a three-dot menu icon.
- Propagate:** A section header.
- Mode:** Two radio buttons, "Same Product" and "Same Domain".
- Target:** Three radio buttons, "All", "Selection", and "Equal Tags".
- Application:** Two radio buttons, "All Properties" and "Finishes Only".
- Apply:** A button at the bottom center.

Diagram 5

## Shaker Rail Peg Installation Options

- Non-Defacing Hanging Bracket
  - When specifying this option in CET the Fit panels will be ordered as standard panels.
  - Hanging Brackets allow pegs to be added in a manner that won't deface a new Fit panel or existing Fit panels.
  - Hanging Brackets from Corral can be ordered as single-sided or double-sided.
  - Hanging Brackets are available in 2 pegs wide or 3 pegs wide.



*Diagram 6*





# HOW TO SPECIFY AND ORDER

1. Capsule by Allsteel is included in the Allsteel extension in CET for ease of visualization and specifying Capsule by Allsteel products in conjunction with Allsteel products.
2. Draw your preferred workstations in CET, using any combination of standard Allsteel products, special Fit panels, and Capsule by Allsteel products.
3. Order Allsteel products, including any special Fit panels through your normal process.
4. When any Capsule product is added to the drawing, a new article view that is pre-filtered for Capsule by Allsteel products will display in the Calculation window.
5. When reviewed, Click Export to create a SIF file. Save the SIF file to your computer in your preferred location.
6. Login to Design Public Group at [designpublicgroup.com](https://designpublicgroup.com).
7. Open an existing quote or start new.
8. Click to import SIF.
9. The correct net pricing will display in Design Public Group.
10. Follow standard order process in Design Public Group to complete Capsule by Allsteel order.

# WARRANTY, PRICING, AND FAQ

## Warranty

- Corral offers a 5-year warranty on its products sold through the Capsule by Allsteel collection.
- To submit a warranty claim, email [support@designpublicgroup.com](mailto:support@designpublicgroup.com).

## Standard Pricing

- All products in the Capsule by Allsteel collection are priced through Design Public Group. Log in to your account and upload a SIF file or select products from the Capsule by Allsteel brand in DPG.
- Net pricing can be seen on an individual product page, or by creating a full quote.

## Special Pricing

- If you are working on a large project (roughly \$50,000 net in value), contact your Allsteel sales representative to inquire about special pricing.

## Custom Finishes

- Some products may be available in a custom RAL paint color. To inquire about availability and pricing, contact your Allsteel sales representative.

## Freight

- All freight is handled by Design Public Group. When a quote is saved in DPG, the freight quote is automatically generated.

## Exclusivity

- Capsule by Allsteel products are exclusive to Allsteel dealers only.

## Product Information and Order Support

- Products in the Capsule by Allsteel collection are sold and supported by Design Public Group.
- For specification or general questions about products in the Capsule by Allsteel collection, contact your Allsteel sales representative.
- For questions about product lead time or freight, email your DPG rep and [support@designpublicgroup.com](mailto:support@designpublicgroup.com).
- Samples are fulfilled by Corral and can be requested by emailing [jess@corralusa.com](mailto:jess@corralusa.com).
- For questions about your Capsule by Allsteel order, email [support@designpublicgroup.com](mailto:support@designpublicgroup.com).

## General

Capsule by Allsteel products are designed to offer new style options for Allsteel's Fit product line. This collection is designed by Corral and sold via Design Public Group. Orders for Fit will follow standard Allsteel ordering processes. Capsule by Allsteel products will not be serviced or supported by Allsteel's Customer Experience team.

# FINISHES

## Wood



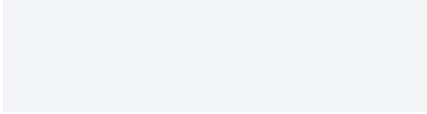
Ash



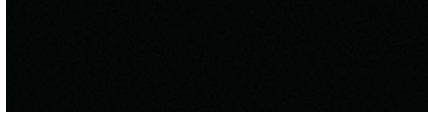
White Oak



Walnut



Designer White



Black

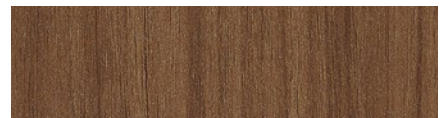
## Laminate



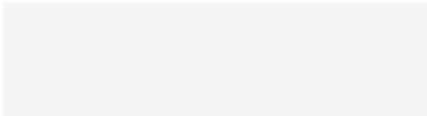
Beigewood



Natural Recon



Natural Walnut

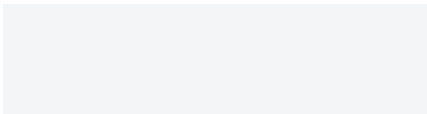


Designer White



Black

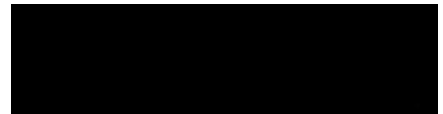
## Painted Metal



Designer White

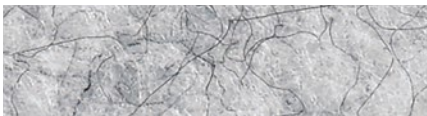


Brick

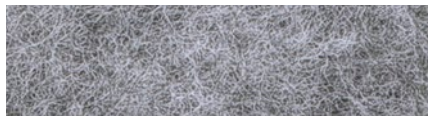


Black

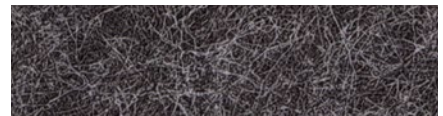
## PET



Light



Medium

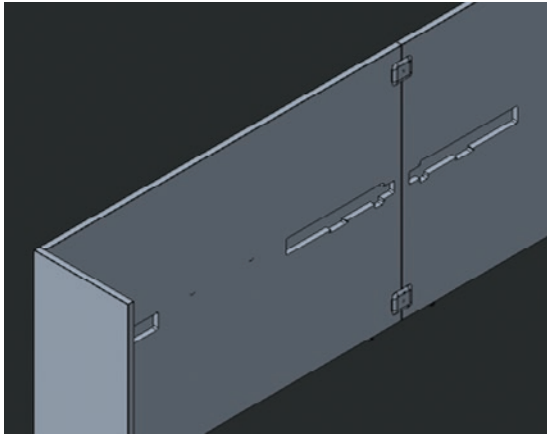


Dark

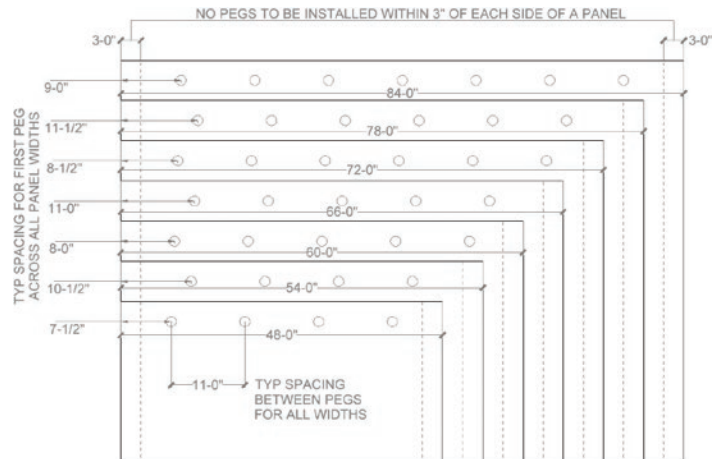
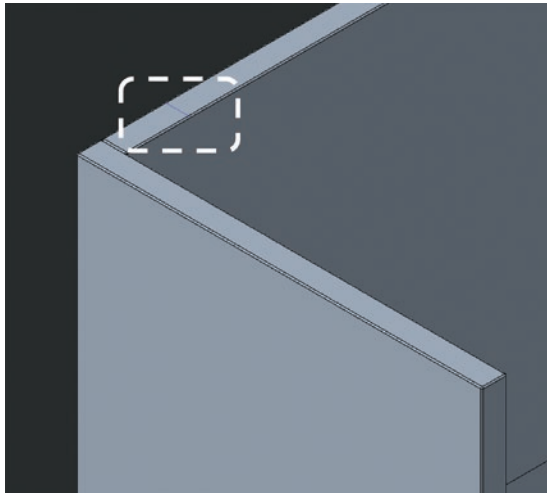
# **SHAKER RAIL PEG INSTALLATION INSTRUCTIONS**

# Shaker Rail Peg Installation Instructions

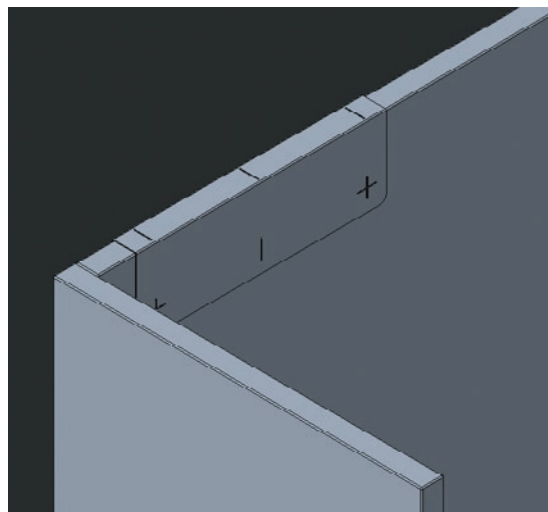
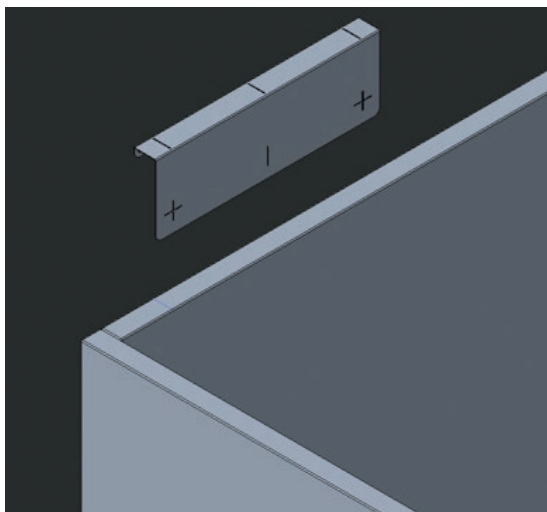
**Step 1:** Assemble Fit panels per standard product instructions and specifications.



**Step 2:** Each panel width will have a different starting point for the first peg. Use the diagram below to find the location of the first peg, using the dimension shown from the edge of the panel. (NOTE: do not drill holes within 3" from each edge of the Fit panel.)



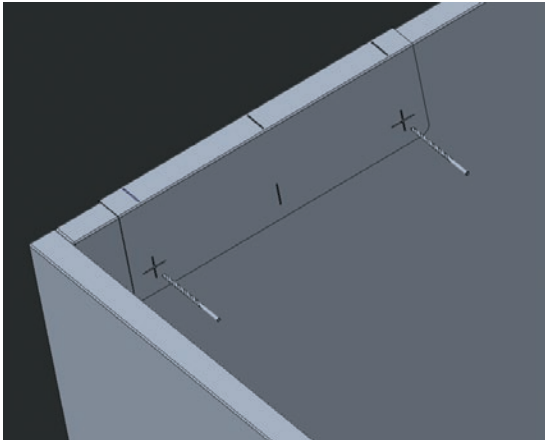
**Step 3:** Place template on Fit panel and align scribe line with sight line on template. The template places holes 11" apart, set with cross-hairs. Middle scribe lines are provided to easily center the measurements.





**Step 4:** Clamp or hold the drill template in place. Using a  $\frac{1}{8}$ " (0.125") drill bit, drill pilot holes approximately  $\frac{1}{2}$ " deep.

**Step 5:** Continue scribing lines and sliding template along the Fit panel to add additional holes as needed. (Note: do not drill holes within 3" from each edge of the Fit panel.)



**Step 6:** Using a  $\frac{25}{64}$ " (0.391") drill bit, enlarge the holes to accept the threaded insert. For a single-sided application, drill hole approximately  $\frac{5}{8}$ " (0.625") deep. For dual-sided applications, drill holes through the Fit panel.

**Step 7:** Erase any scribe lines or markings.

**Step 8:** Install threaded inserts (hardware provided with peg) into Fit panel.

**Step 9:** Install threaded stem of wood peg into threaded insert. Alternatively, it is also possible to screw the peg into the threaded insert, and utilize the peg as leverage to thread the insert into the hole.

