

SEATING : STOOLS
LIST PRICES EFFECTIVE
FEBRUARY 1, 2024

STOOLS



STATE OF SOUTH CAROLINA

2 0 2 4



| | | | |
|---|--|--|---|
| Mailing Address: HBF PO Box 8 Hickory NC 28603-0008 | Shipping Address: HBF 900 - 12th Street Drive NW Hickory NC 28601-4763 | Contact: Phone: 1.855.HBF.2020 828.328.2064 Fax: 828.485.2690 Info: hbfservice@hbf.com www.hbf.com | Order Processing: Phone: 1.855.HBF.2020 828.328.2064 Fax: 828.485.2690 hbforders@hbf.com |
|---|--|--|---|

| GENERAL INFORMATION | PAGE |
|---|------|
| ANSI/BIFMA e3-2014e Furniture Sustainability..... | 5 |
| COM Ordering Requirements..... | 3 |
| Combinations of Upholstery Applications | 4 |
| Dimension Guide | 5 |
| GSA | 6 |
| HBF Textiles Graded Product | 12 |
| High Performance Products | 6 |
| Product Material Options | 7 |
| Indoor Advantage™ Gold Certified | 5 |
| Seating Ordering Procedure | 2 |
| Special Code Compliance – CAL 117..... | 4 |
| Spring Down Cushions..... | 6 |
| Veneer Options..... | 6 |
| Yardage Requirements..... | 2 |
| | |
| STOOLS | |
| Andaz | 13 |
| Carlyle | 38 |
| Enpointe | 41 |
| Essens | 45 |
| Gubi® Beetle..... | 53 |
| Jueki..... | 59 |



Coverings

All upholstered items may be ordered using HBF Textiles, HBF Leathers, or coverings provided by the customer. Prices listed as COM refer to Customer's Own Material, which includes textiles and leather. Prices listed as GRADE refer to HBF Textiles and/or HBF Leather.

Yardage requirements shown in the price list are based on non-directional 54" wide material. The following conversion chart should be used to determine yardage requirements when COM textile is 54" wide or less and/or has a repeat of 2" or more. Add together the vertical and horizontal repeat to determine which column should be used as a reference.

| Fabric Width | Plain Fabric | 2"-10" Repeat | 11"-20" Repeat | 21"-25" Repeat | 26"-30" Repeat | 31"-35" Repeat | 36"-40" Repeat | 41"-45" Repeat |
|---------------|--------------|---------------|----------------|----------------|----------------|----------------|----------------|----------------|
| 54" | + 0% | +10% | +15% | +20% | +25% | +30% | +35% | +40% |
| 51"-53" | 15% | 20% | 25% | 30% | 35% | 40% | 45% | 50% |
| 48"-50" | 30% | 35% | 40% | 45% | 50% | 55% | 60% | 65% |
| 45"-47" | 45% | 50% | 55% | 60% | 65% | 70% | 75% | 80% |
| 36"-44" | 60% | 65% | 70% | 75% | 80% | 85% | 90% | 95% |

To determine the possibility of reduced yardage requirements for orders of thirty (30) or more units, please contact The HBF Client Experience Team. HBF reserves the right to request additional yardage of COM at customer expense based on repeat and/or pattern size, and number of rolls.

All COM's must be approved for application before the purchase order is submitted to HBF. Please contact The HBF Client Experience Team at hbfservice@hbf.com to verify that your COM fabric has been approved. If it has not, please request COM approval testing via www.hbf.com under COM Request. Failure to submit a COM for testing may result in additional expenses or rejection of COM. For any repeat and/or pattern size not listed, please contact The HBF Client Experience Team for a yardage requirement quotation.

HBF cannot be held responsible for performance, color accuracy, or weaving of COM materials. All responsibility for COM shipments is between the purchaser and the textile/leather source. HBF reserves the right to reject any COM. HBF assumes no responsibility for suitability or wearability of COM. Difficult COM may be subject to additional charge if additional labor costs are incurred. HBF assumes no responsibility for the flame retardance of any COM. Customers are solely responsible for making sure that COM complies with all applicable codes and regulations. Orders specifying COM will not be scheduled for production until all approved COM(s) are received by HBF. To ensure proper COM expediting, please tag fabric/leather roll(s) with the following information: 1. Purchasing dealer name and purchase order number 2. HBF acknowledgment number, if available 3. Other pertinent information which will enable proper COM identification.

When sending COM leather for use on one of our upholstered pieces, please send eighteen (18) square feet of leather for each yard of 54" plain fabric required for that item.



Coverings (Continued)

COM ORDERING REQUIREMENTS:

Prior to acceptance of order specifying COM, a memo sample must be submitted to HBF for determination of suitability. All COM's must be rolled separately, on individual tubes. Multiple materials rolled on the same tube will not be accepted.

For ease of expediting your COM order, we require the following information:

- | | |
|---|------------------------------|
| 1. Material description | Shipping Address: HBF |
| 2. Material source | 900 12th Street Drive NW |
| 3. Order line, product name or number | Hickory, NC 28601-4763 |
| 4. Material color | |
| 5. A swatch of the covering | |
| 6. Special application instructions, if any | |

If COM is of a type requiring choices of seam placement, face side, position of design or repeat; these instructions must be clearly stated on the original order.

HBF cannot be held responsible for performance, color accuracy, or weaving of COM materials. All responsibility for COM shipments is between the purchaser and the textile/leather source.

HBF reserves the right to reject any COM. HBF assumes no responsibility for suitability or wearability of COM. Difficult COM may be subject to additional charge if additional labor costs are incurred.

HBF assumes no responsibility for the flame retardance of any COM. Customers are solely responsible for making sure that COM complies with all applicable codes and regulations.

Orders specifying COM will not be scheduled for production until all approved COM is received by HBF.

To ensure proper COM expediting, please tag textile/leather with the following information:

1. Purchasing dealer name and purchase order number
2. HBF acknowledgement number, if available
3. Other pertinent information which will enable proper COM identification



Combination of Upholstery Applications

All seating ordered with combination upholstery application (fabric, leather) that **is not** offered as standard is subject to a **\$103 List Upholstery upcharge** and will be entered and processed as a special model, in addition to the following pricing conditions:

1. Combinations using HBF Textiles and COM will be priced at the COM price. The cost of the portion of the HBF Textiles used, will be entered as a miscellaneous charge on the furniture order.
2. Combinations using HBF Textiles and HBF Leathers, or COM and HBF Leathers, will be priced at the appropriate Leather I-V price.
3. Combinations using two HBF Textiles will be invoiced at higher grade price.
4. When specifying combination of upholstery applications, a sketch indicating placement of textiles and direction of applications must accompany the purchase order.

Special Code Compliance

California #117-2013

Unless otherwise specified, foam used in all HBF seating products complies with these guidelines.

Boston Fire Code

New York Port Authority

Please contact the HBF Client Experience Team if compliance is required for these special codes.

**ANSI/BIFMA e3-2014e
LEVEL® Furniture
Sustainability Standard
and Certification**

A majority of HBF’s products have met the necessary qualifications to achieve LEVEL® certification. LEVEL® is the multi-attribute sustainability certification based on the ANSI/BIFMA e3 Furniture Sustainability Standard. The standard and certification were created to deliver the most open and transparent means of evaluating and communicating the environmental and social impacts of furniture products in the built environment. Taking into account a company’s social actions, energy usage, material selection and human and ecosystem health impacts, LEVEL® addresses how a product is sustainable from multiple perspectives. The organization, facilities, and products are audited on an annual basis to ensure ongoing compliance and improvement.

With LEVEL®, customers can make informed choices about sustainable commercial office furniture. The LEVEL® mark identifies that a product has been vetted by an independent third party certifier and its numeric marking of 1, 2, or 3 indicates the threshold of certification the product has achieved. A majority of HBF’s seating, occasional tables, and conference lines are LEVEL® certified. Please download the certificates from our product pages for the complete details. For more information about the ANSI/BIFMA LEVEL® standard, visit www.levelcertified.org.

**ANSI/BIFMA Performance
Standards**

Our seating products meet or exceed ANSI/BIFMA weight performance standards of 275 lbs. (124.7 kg.) unless otherwise noted.

**Indoor Advantage™
Gold certified**

All HBF seating products are Indoor Advantage™ Gold Certified.

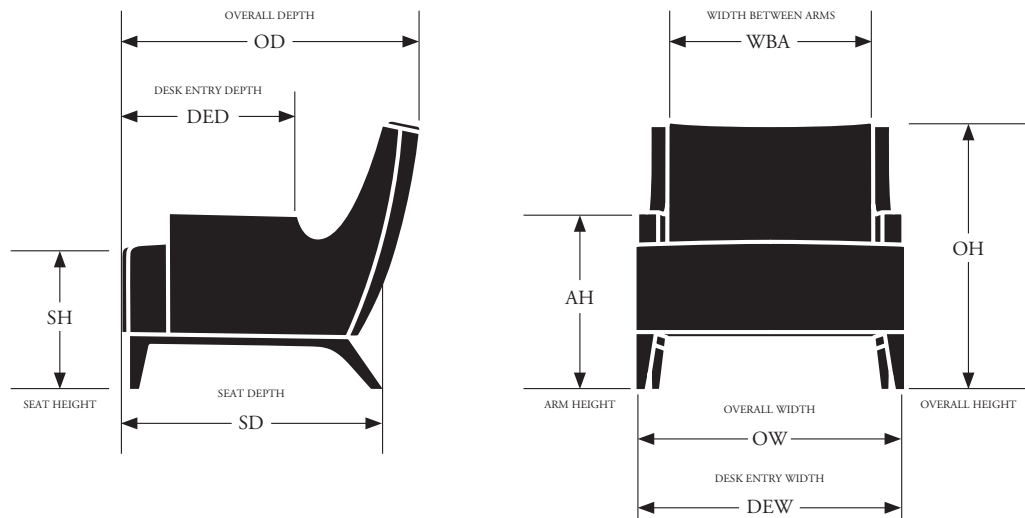
SCS Global Services, a reputable third-party certification and assessment body of environmental, sustainability and safety claims since 1984, has developed internationally recognized standards and certification programs to assist businesses with improving their environmental efforts, social accountability and product performance.

The advantages of holding Indoor Air Quality certification are substantial: in addition to improving indoor working environments and meeting qualifications for the LEED-CI EQ 4.5 credit for office furniture as well as the BIFMA Standard for Low-Emitting Office Furniture Systems & Seating M-7.1, there is the added assurance of knowing that the company’s entire breadth of products is held to such rigorous standards.

For more information regarding Indoor Advantage™, please visit: <http://www.scsglobalservices.com>.

Please contact the HBF Client Experience Team for pricing and lead time information.

Dimension Guide





GSA/Federal Contract Information:

GSA Contract Number 47QSMA22D08P9

Model numbers identified with the following verbiage “When purchased separately without a configurable TAA compliant end product, not on GSA contract” is to mean that these configurable parts or components:

- Have no functionality or capability without being integrated into an end product; and
- Are considered **Open Market** if purchased without a configurable TAA compliant end product.

HBF High Performance Products

HBF and HBF Textiles have long been leaders in contract furnishings and known for industry-leading product design coupled with the highest quality construction, comfort and aesthetic beauty.

Now these same principals are the cornerstones of HBF Healthcare high performance products. We have consulted with healthcare designers and clients to provide products and options for interiors that will provide quality sustainable design solutions for the future. These effective solutions will address the unique interactions required by any high-use facility. Visit www.hbf.com for additional high performance product information.

Seating Product High Performance Options:

- Guest and Lounge Seating
- Arm Caps
- Moisture Barrier
- Wipe Out - Clean Out
- Tandem Seating
- Wall Saver Legs
- Replaceable Components
- Upholstery Products from HBF Textiles

Spring Down Cushions

Optional spring down cushions are available on most loose cushion HBF lounge seating. List upcharges are:

| | |
|----------|-------|
| Chair | \$108 |
| Loveseat | \$194 |
| Sofa | \$297 |

Veneer and Finishes

Wood owes its inherent beauty to variations in color, grain, and texture; therefore, these variations are not considered defects. Due to the natural color and grain variances of wood substance the final finish color, texture and grain may vary from one furniture piece to another even though they are finished at the same time. Exposure to light and the aging process will cause changes in surface color of natural wood products. Light finishes on wood products do not mask the natural characteristics of wood. HBF does not guarantee the exact matching of grain, pattern and color.

An upcharge of **5% Net** COM per seating unit, with a minimum upcharge of **\$500 Net** per order, will apply for any custom wood finish.

Refer to the following page for product material options.

ASH: (AH) FINISHES



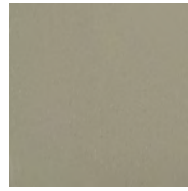
AH310
Smoke Opaque



AH400
Clear



AH402
Black Opaque



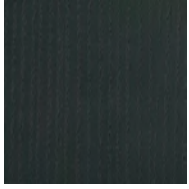
AH403
Grey Opaque



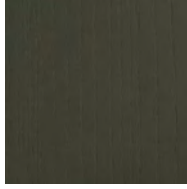
AH404
Warm White Opaque



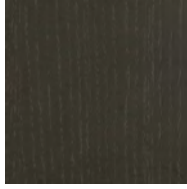
AH405
Mist Opaque



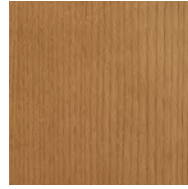
AH406
Denim Opaque



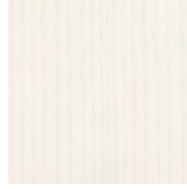
AH407
Pewter Opaque



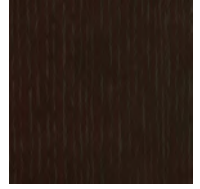
AH408
Peppercorn Opaque



AH901
Amber



AH902
Designer White Opaque



AH911
Warm Brick



AH929
Nutmeg



AH937
Bark



AH984
Dark Roast

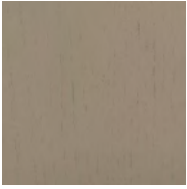


AH993
Sumatra

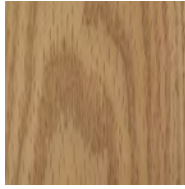
Screen images are intended as a guide only and should not be regarded as absolutely correct. For exact color/texture, please visit www.hbf.com to request an actual sample.



OAK: (RK) FINISHES



RK310
Smoke Opaque



RK400
Clear



RK402
Black Opaque



RK403
Grey Opaque



RK404
Warm White Opaque



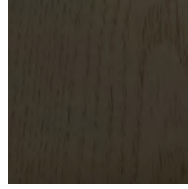
RK405
Mist Opaque



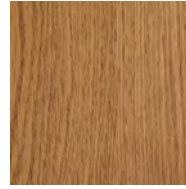
RK406
Denim Opaque



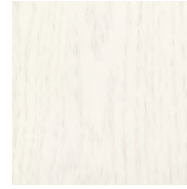
RK407
Pewter Opaque



RK408
Peppercorn Opaque



RK901
Amber



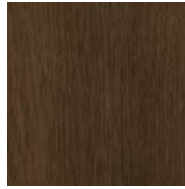
RK902
Designer White Opaque



RK911
Warm Brick



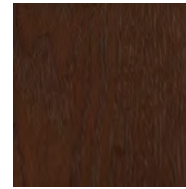
RK929
Nutmeg



RK937
Bark



RK984
Dark Roast



RK993
Sumatra

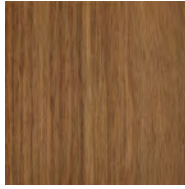
Screen images are intended as a guide only and should not be regarded as absolutely correct.
For exact color/texture, please visit www.hbf.com to request an actual sample.



WALNUT: (NT) FINISHES



NT310
Smoke Opaque



NT400
Clear



NT402
Black Opaque



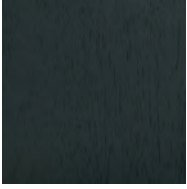
NT403
Grey Opaque



NT404
Warm White Opaque



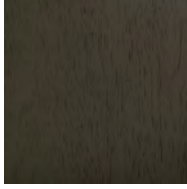
NT405
Mist Opaque



NT406
Denim Opaque



NT407
Pewter Opaque



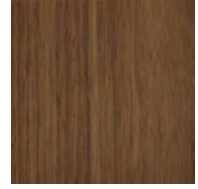
NT408
Peppercorn Opaque



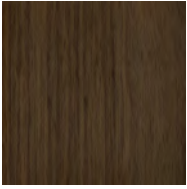
NT902
Designer White Opaque



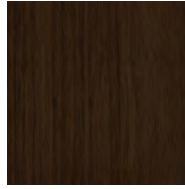
NT911
Warm Brick



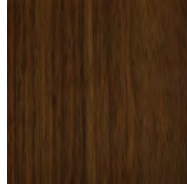
NT929
Nutmeg



NT937
Bark



NT984
Dark Roast



NT993
Sumatra

Screen images are intended as a guide only and should not be regarded as absolutely correct.
For exact color/texture, please visit www.hbf.com to request an actual sample.



MAPLE: (NE) CORE FINISHES *Note: Exclusively available for the Andaz Collection.*



NE310
Smoke Opaque



NE402
Black Opaque



NE406
Denim Opaque



NE902
Designer White Opaque

MAPLE: (NE) CURATED FINISHES *Note: Exclusively available for the Andaz Collection.*



NE150
Conifer Opaque



NE152
Cameo Opaque



NE153
Cordovan Opaque

LAMINATES: (PL) *Note: Available on selected Andaz products only:*



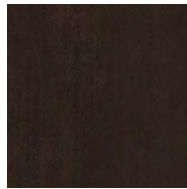
PLS3022T
Denim



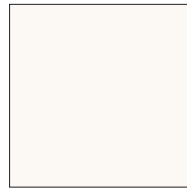
PLSE101SD
Black



PLSG214N
Grey Velvet



PLSG228SD
Peppercorn



PLSW826SD
White

Screen images are intended as a guide only and should not be regarded as absolutely correct.
For exact color/texture, please visit www.hbf.com to request an actual sample.



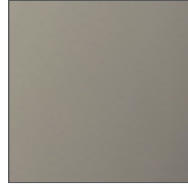
POWDER COATS:



BL
Black

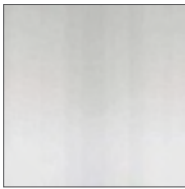


WI
White

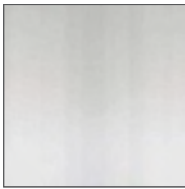


LG
Light Grey

METALS:



POL
Polished Chrome



PC
Polished Chrome (Andaz)

Note: The following available on Carlyle Stools only:



BA
Brushed Aluminum



BB
Brushed Brass

Screen images are intended as a guide only and should not be regarded as absolutely correct. For exact color/texture, please visit www.hbf.com to request an actual sample.



| Grade A | Grade B | Grade C | Grade D | Grade E | Grade F |
|--|-------------------------------|---|---|---------------------|--|
| Blink Denim Wash* Walkabout Zippy | Look-see Remember Rush* | Caddy Corner* Checkmate Cuddle Up Picnic Plaid Upbeat | Chenille Striae Crumpled Paper Dot Grid Habu Poppy Skim Coat | Fourfold* Uptown | All Terrain Bunny Cloverleaf Comfort Zone Happy Camper Here & There Knitwork Laugh Lines Moody Moss Notable Grain Sherpa Well-Loved |

| Grade G | Grade H | Grade J | Grade K | Grade L | Grade M |
|--|--|--|--|--|---|
| Beetle Curtain Wall Dashing Equation* Folded Lines High Rise Honest* Inherent Matriarch Pebbled Scribble XS Stardust Upscale | Air Mail* Captain Bubble Crafted Felt Chubby Baby Intersection Lawn Chair Madam Dottie Soft Angles 2.0 Upstart Uptick | Abito Argyle Boucle Belgian Meadow Brushed Canvas Digital Bloom 2.0 Enriched Boucle Glint Lava Rock Quill Scribble XL Sir Stripe-a-lot Tattoo Toile Tessellations Tête-à-Tête Tickled Herring Twist | Afghan Cherished Knit Complex Crosstweed Double Stitch Gather Grateful Grid Heartfelt Merci Boucle Moving Blanket Moving Forward Night Earth Pepper Blend Polygone Quilted Comfort Sideways Sister Solid | Agate Stripe Goosebumps Hipster Landscape Blur Ms. Quilty 2.0 Smart* Sweater Velvet Mix Woven Memory | Crafted Cloud Eccentric Flirt Poodle |

| Leather I | Leather II | Leather III | Leather IV | Leather V | Leather VI |
|-----------|------------|-------------|------------|-----------|------------------------------|
| Clutch | Vivace II | Aviator | Free Way | Wild West | Modern Patina Upper Crust |

*Some or all colors to be discontinued in 2024



Andaz Specifications

Collection Details

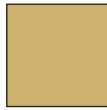
Bar Stool | Counter Stool
Wood Shell | Laminate Shell with Clear Wood Edge | Upholstered | Upholstered with Channel Stitch | No Upholstery

Channel Stitch Options

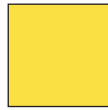
Thread color must be specified on the Andaz Stools for each line item. Specify STD for standard colors. However, thread color may be specified in one of twelve contrasting colors:



10 White



20 Beige



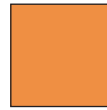
22 Yellow



39 Brown



44 Red



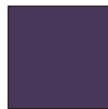
45 Orange



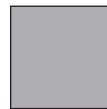
58 Blue



67 Green



77 Purple



84 Light Grey



89 Dark Grey



90 Black

Wood Shell Options

Shell available in ash or maple
Refer to HBF finish options for color selection. Finish selection must be noted on order.

Frame Finishes

Black Powder Coat Metal | White Powder Coat Metal | Polished Chrome

Back Options

Mid Back Stools | Low Back Stools

Feet

Standard Glide | Swivel Glide



| | List Price | Sq. Ft. | Yards | Dimensions |
|--|------------|---------|-------|--|
| Andaz HGQ115-241 | | | | |
|  | 1195 | | | OH 31½ AH OW 20¼ WBA OD 19½ DED SH 24 DEW SD 17⅞ R |
| | | | | Shipping Weight 32 Cube 22 |

Counter Stool | Low Back | Ash Shell | Metal Frame - Black Powder Coat

ANSI/BIFMA LEVEL® Furniture Sustainability Standard certified
Indoor Advantage™ certified

PLEASE SPECIFY THE FOLLOWING TO ORDER:

| MODEL NUMBER | BASE FINISH | SPECIES & FINISH | FOOT | |
|--------------|--|---|---|---|
| | Options for metal leg finish: BL = Black Powder Coat WI = White Powder Coat PC = Polished Chrome +\$150 | Options for wood finishes: AH = Ash 310 = Smoke Opaque 408 = Peppercorn Opaque 400 = Clear 901 = Amber 402 = Black Opaque 902 = Designer White Opaque 403 = Grey Opaque 911 = Warm Brick 404 = Warm White Opaque 929 = Nutmeg 405 = Mist Opaque 937 = Bark 406 = Denim Opaque 984 = Dark Roast 407 = Pewter Opaque 993 = Sumatra | Options for wood finishes: NE = Maple -\$65 Core Finishes: 310 = Smoke Opaque 402 = Black Opaque 406 = Denim Opaque 902 = Designer White Opaque Curated Finishes: 150 = Conifer Opaque 152 = Cameo Opaque 153 = Cordovan Opaque | Options for foot: G = Glide STD = Standard SVL = Swivel +\$10 |

HGQ115-241.Base.Wood.Foot Example: HGQ115-241.BL.AH400.GSTD



List Prices

Sq.Ft. Yards Dimensions

Andaz HGQ115-251



| | | | | | | | | | | |
|---------|------|---------|------|-------------|------|----|---|-----------------|-----|-----|
| COM/COL | 1440 | Grade G | 1495 | Leather I | 1695 | 18 | 1 | OH | 31½ | AH |
| Grade A | 1420 | Grade H | 1510 | Leather II | 1775 | | | OW | 20¼ | WBA |
| Grade B | 1430 | Grade J | 1520 | Leather III | 1855 | | | OD | 19½ | DED |
| Grade C | 1440 | Grade K | 1540 | Leather IV | 1935 | | | SH | 24¾ | DEW |
| Grade D | 1455 | Grade L | 1575 | Leather V | 2015 | | | SD | 17¾ | R |
| Grade E | 1465 | Grade M | 1620 | Leather VI | 2095 | | | | | |
| Grade F | 1475 | | | | | | | | | |
| | | | | | | | | Shipping Weight | | 32 |
| | | | | | | | | Cube | | 22 |

Fully Upholstered Seat and Back | Counter Stool | Low Back | Ash Shell | Metal Frame - Black Powder Coat

Note: Please contact the HBF Client Experience Team (855-423-2020) or your sales rep for a list of approved textiles.

ANSI/BIFMA LEVEL® Furniture Sustainability Standard certified
Indoor Advantage™ certified

PLEASE SPECIFY THE FOLLOWING TO ORDER:

| MODEL NUMBER | TEXTILES | FLAMMABILITY | BASE FINISH | SPECIES & FINISH | FOOT | |
|--------------|---|---|--|---|---|---|
| | Indicate fabric choice: <i>See options for fabrics at www.hbftextiles.com</i> | Indicate flammability: U = Cal 117 | Options for metal leg finish: BL = Black Powder Coat WI = White Powder Coat PC = Polished Chrome +\$150 | Options for wood finishes: AH = Ash 310 = Smoke Opaque 400 = Clear 402 = Black Opaque 403 = Grey Opaque 404 = Warm White Opaque 405 = Mist Opaque 406 = Denim Opaque 407 = Pewter Opaque 408 = Peppercorn Opaque 901 = Amber 902 = Designer White Opaque 911 = Warm Brick 929 = Nutmeg 937 = Bark 984 = Dark Roast 993 = Sumatra | Options for wood finishes: NE = Maple -\$65 <i>Core Finishes:</i> 310 = Smoke Opaque 402 = Black Opaque 406 = Denim Opaque 902 = Designer White Opaque <i>Curated Finishes:</i> 150 = Conifer Opaque 152 = Cameo Opaque 153 = Cordovan Opaque | Options for foot: G = Glide STD = Standard SVL = Swivel +\$10 |

HGQ115-251.Fabric.Flammability.Base.Wood.Foot Example: HGQ115-251.950-88.BL.AH400.GSTD



List Prices

Sq.Ft. Yards Dimensions

Andaz HGQ115-261



| | | | | | | | | | | |
|---------|------|---------|------|-------------|------|----|----|-----------------|-----|-----|
| COM/COL | 1675 | Grade G | 1750 | Leather I | 2055 | 27 | 1½ | OH | 31½ | AH |
| Grade A | 1640 | Grade H | 1775 | Leather II | 2175 | | | OW | 20¼ | WBA |
| Grade B | 1660 | Grade J | 1790 | Leather III | 2295 | | | OD | 19½ | DED |
| Grade C | 1675 | Grade K | 1825 | Leather IV | 2415 | | | SH | 24¾ | DEW |
| Grade D | 1690 | Grade L | 1875 | Leather V | 2535 | | | SD | 17¾ | R |
| Grade E | 1710 | Grade M | 1940 | Leather VI | 2655 | | | | | |
| Grade F | 1730 | | | | | | | | | |
| | | | | | | | | Shipping Weight | | 32 |
| | | | | | | | | Cube | | 22 |

Fully Upholstered Seat and Back - Channel Stitched | Counter Stool | Low Back | Ash Shell | Metal Frame - Black Powder Coat

Note: Please contact the HBF Client Experience Team (855-423-2020) or your sales rep for a list of approved textiles.

ANSI/BIFMA LEVEL® Furniture Sustainability Standard certified
Indoor Advantage™ certified

PLEASE SPECIFY THE FOLLOWING TO ORDER:

| MODEL NUMBER | TEXTILES | FLAMMABILITY | STITCH | BASE FINISH | SPECIES & FINISH | FOOT | |
|--------------|---|--|--|---|---|---|---|
| | Indicate fabric choice: <i>See options for fabrics at www.bbf textiles.com</i> | Indicate flammability: U = Cal 117 | Options for thread color: <ul style="list-style-type: none"> 10 = White 20 = Beige 22 = Yellow 39 = Brown 44 = Red 45 = Orange 58 = Blue 67 = Green 77 = Purple 84 = Light Grey 89 = Dark Grey 90 = Black SM = Standard Match | Options for metal leg finish: <ul style="list-style-type: none"> BL = Black Powder Coat WI = White Powder Coat PC = Polished Chrome +\$150 | Options for wood finishes: AH = Ash <ul style="list-style-type: none"> 310 = Smoke Opaque 400 = Clear 402 = Black Opaque 403 = Grey Opaque 404 = Warm White Opaque 405 = Mist Opaque 406 = Denim Opaque 407 = Pewter Opaque 408 = Peppercorn Opaque 901 = Amber 902 = Designer White Opaque 911 = Warm Brick 929 = Nutmeg 937 = Bark 984 = Dark Roast 993 = Sumatra | Options for wood finishes: NE = Maple -\$65 <ul style="list-style-type: none"> 310 = Smoke Opaque 402 = Black Opaque 406 = Denim Opaque 902 = Designer White Opaque <p><i>Core Finishes:</i></p> <ul style="list-style-type: none"> 310 = Smoke Opaque 402 = Black Opaque 406 = Denim Opaque 902 = Designer White Opaque <p><i>Curated Finishes:</i></p> <ul style="list-style-type: none"> 150 = Conifer Opaque 152 = Cameo Opaque 153 = Cordovan Opaque | Options for foot: G = Glide <ul style="list-style-type: none"> STD = Standard SVL = Swivel +\$10 |

HGQ115-261.Fabric.Flammability.Stitch.Base.Wood.Foot Example: HGQ115-261.950-88.U.SM.BL.AH400.GSTD



List Price

Dimensions

Andaz HGQ115-271



1205

| | | |
|-----------------|-----|-----|
| OH | 36½ | AH |
| OW | 20¼ | WBA |
| OD | 21 | DED |
| SH | 24 | DEW |
| SD | 17½ | R |
| Shipping Weight | | 32 |
| Cube | | 22 |

Counter Stool | Mid Back | Ash Shell | Metal Frame - Black Powder Coat

ANSI/BIFMA LEVEL® Furniture Sustainability Standard certified
Indoor Advantage™ certified

PLEASE SPECIFY THE FOLLOWING TO ORDER:

| MODEL NUMBER | BASE FINISH | SPECIES & FINISH | FOOT |
|--------------|------------------------------------|--|--|
| | Options for metal leg finish: | Options for wood finishes: AH = Ash | Options for wood finishes: NE = Maple -\$65 |
| | BL = Black Powder Coat | 310 = Smoke Opaque | 310 = Smoke Opaque |
| | WI = White Powder Coat | 400 = Clear | 402 = Black Opaque |
| | PC = Polished Chrome +\$150 | 402 = Black Opaque | 406 = Denim Opaque |
| | | 403 = Grey Opaque | 902 = Designer White Opaque |
| | | 404 = Warm White Opaque | <i>Core Finishes:</i> |
| | | 405 = Mist Opaque | 310 = Smoke Opaque |
| | | 406 = Denim Opaque | 402 = Black Opaque |
| | | 407 = Pewter Opaque | 406 = Denim Opaque |
| | | 408 = Peppercorn Opaque | 902 = Designer White Opaque |
| | | 901 = Amber | <i>Curated Finishes:</i> |
| | | 902 = Designer White Opaque | 150 = Conifer Opaque |
| | | 911 = Warm Brick | 152 = Cameo Opaque |
| | | 929 = Nutmeg | 153 = Cordovan Opaque |
| | | 937 = Bark | |
| | | 984 = Dark Roast | |
| | | 993 = Sumatra | |
| | | | Options for foot: G = Glide |
| | | | STD = Standard |
| | | | SVL = Swivel +\$10 |

HGQ115-271.Base.Wood.Foot Example: HGQ115-271.BL.AH400.GSTD



List Prices

Sq.Ft. Yards Dimensions

Andaz HGQ115-281



| | | | | | | | | | | |
|---------|------|---------|------|-------------|------|----|---|-----------------|-----|-----|
| COM/COL | 1455 | Grade G | 1510 | Leather I | 1710 | 18 | 1 | OH | 36½ | AH |
| Grade A | 1435 | Grade H | 1525 | Leather II | 1790 | | | OW | 20¼ | WBA |
| Grade B | 1445 | Grade J | 1535 | Leather III | 1870 | | | OD | 21 | DED |
| Grade C | 1455 | Grade K | 1555 | Leather IV | 1950 | | | SH | 24¾ | DEW |
| Grade D | 1470 | Grade L | 1590 | Leather V | 2030 | | | SD | 17½ | R |
| Grade E | 1480 | Grade M | 1635 | Leather VI | 2110 | | | | | |
| Grade F | 1490 | | | | | | | | | |
| | | | | | | | | Shipping Weight | | 32 |
| | | | | | | | | Cube | | 22 |

Fully Upholstered Seat and Back | Counter Stool | Mid Back | Ash Shell | Metal Frame - Black Powder Coat

Note: Please contact the HBF Client Experience Team (855-423-2020) or your sales rep for a list of approved textiles.

ANSI/BIFMA LEVEL® Furniture Sustainability Standard certified
Indoor Advantage™ certified

PLEASE SPECIFY THE FOLLOWING TO ORDER:

| MODEL NUMBER | TEXTILES | FLAMMABILITY | BASE FINISH | SPECIES & FINISH | FOOT | |
|--------------|---|---|--|---|---|---|
| | Indicate fabric choice: <i>See options for fabrics at www.hbftextiles.com</i> | Indicate flammability: U = Cal 117 | Options for metal leg finish: BL = Black Powder Coat WI = White Powder Coat PC = Polished Chrome +\$150 | Options for wood finishes: AH = Ash 310 = Smoke Opaque 400 = Clear 402 = Black Opaque 403 = Grey Opaque 404 = Warm White Opaque 405 = Mist Opaque 406 = Denim Opaque 407 = Pewter Opaque 408 = Peppercorn Opaque 901 = Amber 902 = Designer White Opaque 911 = Warm Brick 929 = Nutmeg 937 = Bark 984 = Dark Roast 993 = Sumatra | Options for wood finishes: NE = Maple -\$65 <i>Core Finishes:</i> 310 = Smoke Opaque 402 = Black Opaque 406 = Denim Opaque 902 = Designer White Opaque <i>Curated Finishes:</i> 150 = Conifer Opaque 152 = Cameo Opaque 153 = Cordovan Opaque | Options for foot: G = Glide STD = Standard SVL = Swivel +\$10 |



List Prices

Sq.Ft. Yards Dimensions

Andaz HGQ115-291



| | | | | | | | | | | |
|---------|------|---------|------|-------------|------|----|----|-----------------|-----|-----|
| COM/COL | 1685 | Grade G | 1760 | Leather I | 2065 | 27 | 1½ | OH | 36½ | AH |
| Grade A | 1650 | Grade H | 1785 | Leather II | 2185 | | | OW | 20¼ | WBA |
| Grade B | 1670 | Grade J | 1800 | Leather III | 2305 | | | OD | 21 | DED |
| Grade C | 1685 | Grade K | 1835 | Leather IV | 2425 | | | SH | 24¾ | DEW |
| Grade D | 1700 | Grade L | 1885 | Leather V | 2545 | | | SD | 17¾ | R |
| Grade E | 1720 | Grade M | 1950 | Leather VI | 2665 | | | | | |
| Grade F | 1740 | | | | | | | | | |
| | | | | | | | | Shipping Weight | | 32 |
| | | | | | | | | Cube | | 22 |

Fully Upholstered Seat and Back - Channel Stitch | Counter Stool | Mid Back | Ash Shell | Metal Frame - Black Powder Coat

Note: Please contact the HBF Client Experience Team (855-423-2020) or your sales rep for a list of approved textiles.

ANSI/BIFMA LEVEL® Furniture Sustainability Standard certified
Indoor Advantage™ certified

PLEASE SPECIFY THE FOLLOWING TO ORDER:

| MODEL NUMBER | TEXTILES | FLAMMABILITY | STITCH | BASE FINISH | SPECIES & FINISH | FOOT | |
|--------------|---|--|--|---|---|---|---|
| | Indicate fabric choice: <i>See options for fabrics at www.bbf textiles.com</i> | Indicate flammability: U = Cal 117 | Options for thread color: <ul style="list-style-type: none"> 10 = White 20 = Beige 22 = Yellow 39 = Brown 44 = Red 45 = Orange 58 = Blue 67 = Green 77 = Purple 84 = Light Grey 89 = Dark Grey 90 = Black SM = Standard Match | Options for metal leg finish: <ul style="list-style-type: none"> BL = Black Powder Coat WI = White Powder Coat PC = Polished Chrome +\$150 | Options for wood finishes: AH = Ash <ul style="list-style-type: none"> 310 = Smoke Opaque 400 = Clear 402 = Black Opaque 403 = Grey Opaque 404 = Warm White Opaque 405 = Mist Opaque 406 = Denim Opaque 407 = Pewter Opaque 408 = Peppercorn Opaque 901 = Amber 902 = Designer White Opaque 911 = Warm Brick 929 = Nutmeg 937 = Bark 984 = Dark Roast 993 = Sumatra | Options for wood finishes: NE = Maple -\$65 <ul style="list-style-type: none"> 310 = Smoke Opaque 402 = Black Opaque 406 = Denim Opaque 902 = Designer White Opaque <p><i>Core Finishes:</i></p> <ul style="list-style-type: none"> 150 = Conifer Opaque 152 = Cameo Opaque 153 = Cordovan Opaque <p><i>Curated Finishes:</i></p> | Options for foot: G = Glide <ul style="list-style-type: none"> STD = Standard SVL = Swivel +\$10 |

HGQ115-291.Fabric.Flammability.Stitch.Base.Wood.Foot Example: HGQ115-291.950-88.U.SM.BL.AH400.GSTD



List Price

Dimensions

Andaz HGQ115-301



1255

OH 37½ AH
OW 20¼ WBA
OD 20 DED
SH 30 DEW
SD 17⅞ R

Shipping Weight 32
Cube 25

Barstool | Low Back | Ash Shell | Metal Frame - Black Powder Coat

ANSI/BIFMA LEVEL® Furniture Sustainability Standard certified
Indoor Advantage™ certified

PLEASE SPECIFY THE FOLLOWING TO ORDER:

| MODEL NUMBER | BASE FINISH | SPECIES & FINISH | FOOT |
|--------------|---|---|--|
| | Options for metal leg finish: <ul style="list-style-type: none"> BL = Black Powder Coat WI = White Powder Coat PC = Polished Chrome +\$150 | Options for wood finishes: AH = Ash <i>Core Finishes:</i> <ul style="list-style-type: none"> 310 = Smoke Opaque 400 = Clear 402 = Black Opaque 403 = Grey Opaque 404 = Warm White Opaque 405 = Mist Opaque 406 = Denim Opaque 407 = Pewter Opaque 408 = Peppercorn Opaque 901 = Amber 902 = Designer White Opaque 911 = Warm Brick 929 = Nutmeg 937 = Bark 984 = Dark Roast 993 = Sumatra | Options for wood finishes: NE = Maple -\$65 <i>Core Finishes:</i> <ul style="list-style-type: none"> 310 = Smoke Opaque 402 = Black Opaque 406 = Denim Opaque 902 = Designer White Opaque <i>Curated Finishes:</i> <ul style="list-style-type: none"> 150 = Conifer Opaque 152 = Cameo Opaque 153 = Cordovan Opaque |
| | | | Options for foot: G = Glide <ul style="list-style-type: none"> STD = Standard SVL = Swivel +\$10 |

HGQ115-301.Base.Wood.Foot Example: HGQ115-301.BL.AH400.GSTD



List Prices

Sq.Ft. Yards Dimensions

Andaz HGQ115-311



| | | | | | | | | | | |
|---------|------|---------|------|-------------|------|----|---|-----------------|-----|-----|
| COM/COL | 1470 | Grade G | 1555 | Leather I | 1755 | 18 | 1 | OH | 37½ | AH |
| Grade A | 1480 | Grade H | 1570 | Leather II | 1835 | | | OW | 20¼ | WBA |
| Grade B | 1490 | Grade J | 1580 | Leather III | 1915 | | | OD | 20 | DED |
| Grade C | 1500 | Grade K | 1600 | Leather IV | 1995 | | | SH | 30¾ | DEW |
| Grade D | 1515 | Grade L | 1635 | Leather V | 2075 | | | SD | 17½ | R |
| Grade E | 1525 | Grade M | 1680 | Leather VI | 2155 | | | | | |
| Grade F | 1535 | | | | | | | | | |
| | | | | | | | | Shipping Weight | | 32 |
| | | | | | | | | Cube | | 22 |

Fully Upholstered Seat and Back | Barstool | Low Back | Ash Shell | Metal Frame - Black Powder Coat

Note: Please contact the HBF Client Experience Team (855-423-2020) or your sales rep for a list of approved textiles.

ANSI/BIFMA LEVEL® Furniture Sustainability Standard certified
Indoor Advantage™ certified

PLEASE SPECIFY THE FOLLOWING TO ORDER:

| MODEL NUMBER | TEXTILES | FLAMMABILITY | BASE FINISH | SPECIES & FINISH | FOOT | |
|--------------|---|---|--|---|---|---|
| | Indicate fabric choice: <i>See options for fabrics at www.hbftextiles.com</i> | Indicate flammability: U = Cal 117 | Options for metal leg finish: BL = Black Powder Coat WI = White Powder Coat PC = Polished Chrome +\$150 | Options for wood finishes: AH = Ash 310 = Smoke Opaque 400 = Clear 402 = Black Opaque 403 = Grey Opaque 404 = Warm White Opaque 405 = Mist Opaque 406 = Denim Opaque 407 = Pewter Opaque 408 = Peppercorn Opaque 901 = Amber 902 = Designer White Opaque 911 = Warm Brick 929 = Nutmeg 937 = Bark 984 = Dark Roast 993 = Sumatra | Options for wood finishes: NE = Maple -\$65 <i>Core Finishes:</i> 310 = Smoke Opaque 402 = Black Opaque 406 = Denim Opaque 902 = Designer White Opaque <i>Curated Finishes:</i> 150 = Conifer Opaque 152 = Cameo Opaque 153 = Cordovan Opaque | Options for foot: G = Glide STD = Standard SVL = Swivel +\$10 |

HGQ115-311.Fabric.Flammability.Base.Wood.Foot

Example: HGQ115-311.950-88.U.BL.AH400.GSTD



List Prices

Sq.Ft. Yards Dimensions

Andaz HGQ115-321



| | | | | | | | | | | |
|---------|------|---------|------|-------------|------|----|----|-----------------|-----|-----|
| COM/COL | 1805 | Grade G | 1880 | Leather I | 2185 | 27 | 1½ | OH | 37½ | AH |
| Grade A | 1770 | Grade H | 1905 | Leather II | 2305 | | | OW | 20¼ | WBA |
| Grade B | 1790 | Grade J | 1920 | Leather III | 2425 | | | OD | 20 | DED |
| Grade C | 1805 | Grade K | 1955 | Leather IV | 2545 | | | SH | 30¾ | DEW |
| Grade D | 1820 | Grade L | 2005 | Leather V | 2665 | | | SD | 17½ | R |
| Grade E | 1840 | Grade M | 2070 | Leather VI | 2785 | | | | | |
| Grade F | 1860 | | | | | | | | | |
| | | | | | | | | Shipping Weight | | 32 |
| | | | | | | | | Cube | | 22 |

Fully Upholstered Seat and Back - Channel Stitch | Barstool | Low Back | Ash Shell | Metal Frame - Black Powder Coat

Note: Please contact the HBF Client Experience Team (855-423-2020) or your sales rep for a list of approved textiles.

ANSI/BIFMA LEVEL® Furniture Sustainability Standard certified
Indoor Advantage™ certified

PLEASE SPECIFY THE FOLLOWING TO ORDER:

| MODEL NUMBER | TEXTILES | FLAMMABILITY | STITCH | BASE FINISH | SPECIES & FINISH | FOOT | |
|--------------|---|--|--|---|---|---|---|
| | Indicate fabric choice: <i>See options for fabrics at www.bbf textiles.com</i> | Indicate flammability: U = Cal 117 | Options for thread color: <ul style="list-style-type: none"> 10 = White 20 = Beige 22 = Yellow 39 = Brown 44 = Red 45 = Orange 58 = Blue 67 = Green 77 = Purple 84 = Light Grey 89 = Dark Grey 90 = Black SM = Standard Match | Options for metal leg finish: <ul style="list-style-type: none"> BL = Black Powder Coat WI = White Powder Coat PC = Polished Chrome +\$150 | Options for wood finishes: AH = Ash <ul style="list-style-type: none"> 310 = Smoke Opaque 400 = Clear 402 = Black Opaque 403 = Grey Opaque 404 = Warm White Opaque 405 = Mist Opaque 406 = Denim Opaque 407 = Pewter Opaque 408 = Peppercorn Opaque 901 = Amber 902 = Designer White Opaque 911 = Warm Brick 929 = Nutmeg 937 = Bark 984 = Dark Roast 993 = Sumatra | Options for wood finishes: NE = Maple -\$65 <ul style="list-style-type: none"> 310 = Smoke Opaque 402 = Black Opaque 406 = Denim Opaque 902 = Designer White Opaque <p><i>Core Finishes:</i></p> <ul style="list-style-type: none"> 150 = Conifer Opaque 152 = Cameo Opaque 153 = Cordovan Opaque <p><i>Curated Finishes:</i></p> | Options for foot: G = Glide <ul style="list-style-type: none"> STD = Standard SVL = Swivel +\$10 |

HGQ115-321.Fabric.Flammability.Stitch.Base.Wood.Foot Example: HGQ115-321.950-88.U.SM.BL.AH400.GSTD



List Price

Dimensions

Andaz HGQ115-331



1275

OH 42½ AH
OW 20¼ WBA
OD 21½ DED
SH 30 DEW
SD 17⅞ R

Shipping Weight 35
Cube 29

Barstool | Mid Back | Ash Shell | Metal Frame - Black Powder Coat

ANSI/BIFMA LEVEL® Furniture Sustainability Standard certified
Indoor Advantage™ certified

PLEASE SPECIFY THE FOLLOWING TO ORDER:

| MODEL NUMBER | BASE FINISH | SPECIES & FINISH | FOOT | |
|--------------|---|--|--|---|
| | Options for metal leg finish: BL = Black Powder Coat WI = White Powder Coat PC = Polished Chrome +\$150 | Options for wood finishes: AH = Ash <i>Core Finishes:</i> 310 = Smoke Opaque 400 = Clear 402 = Black Opaque 403 = Grey Opaque 404 = Warm White Opaque 405 = Mist Opaque 406 = Denim Opaque 407 = Pewter Opaque 408 = Peppercorn Opaque 901 = Amber 902 = Designer White Opaque 911 = Warm Brick 929 = Nutmeg 937 = Bark 984 = Dark Roast 993 = Sumatra | Options for wood finishes: NE = Maple -\$65 <i>Core Finishes:</i> 310 = Smoke Opaque 402 = Black Opaque 406 = Denim Opaque 902 = Designer White Opaque <i>Curated Finishes:</i> 150 = Conifer Opaque 152 = Cameo Opaque 153 = Cordovan Opaque | Options for foot: G = Glide STD = Standard SVL = Swivel +\$10 |

HGQ115-331.Base.Wood.Foot Example: HGQ115-331.BL.AH400.GSTD



List Prices

Sq.Ft. Yards Dimensions

Andaz HGQ115-341



| | | | | | | | | | | |
|---------|------|---------|------|-------------|------|----|---|-----------------|-----|-----|
| COM/COL | 1490 | Grade G | 1575 | Leather I | 1775 | 18 | 1 | OH | 42½ | AH |
| Grade A | 1500 | Grade H | 1590 | Leather II | 1855 | | | OW | 20¾ | WBA |
| Grade B | 1510 | Grade J | 1600 | Leather III | 1935 | | | OD | 21½ | DED |
| Grade C | 1520 | Grade K | 1620 | Leather IV | 2015 | | | SH | 30¾ | DEW |
| Grade D | 1535 | Grade L | 1655 | Leather V | 2095 | | | SD | 17¾ | R |
| Grade E | 1545 | Grade M | 1700 | Leather VI | 2175 | | | | | |
| Grade F | 1555 | | | | | | | | | |
| | | | | | | | | Shipping Weight | | 41 |
| | | | | | | | | Cube | | 35 |

Fully Upholstered Seat and Back | Barstool | Mid Back | Ash Shell | Metal Frame - Black Powder Coat

Note: Please contact the HBF Client Experience Team (855-423-2020) or your sales rep for a list of approved textiles.

ANSI/BIFMA LEVEL® Furniture Sustainability Standard certified
Indoor Advantage™ certified

PLEASE SPECIFY THE FOLLOWING TO ORDER:

| MODEL NUMBER | TEXTILES | FLAMMABILITY | BASE FINISH | SPECIES & FINISH | FOOT | |
|--------------|---|---|--|---|---|---|
| | Indicate fabric choice: <i>See options for fabrics at www.hbftextiles.com</i> | Indicate flammability: U = Cal 117 | Options for metal leg finish: BL = Black Powder Coat WI = White Powder Coat PC = Polished Chrome +\$150 | Options for wood finishes: AH = Ash 310 = Smoke Opaque 400 = Clear 402 = Black Opaque 403 = Grey Opaque 404 = Warm White Opaque 405 = Mist Opaque 406 = Denim Opaque 407 = Pewter Opaque 408 = Peppercorn Opaque 901 = Amber 902 = Designer White Opaque 911 = Warm Brick 929 = Nutmeg 937 = Bark 984 = Dark Roast 993 = Sumatra | Options for wood finishes: NE = Maple -\$65 <i>Core Finishes:</i> 310 = Smoke Opaque 402 = Black Opaque 406 = Denim Opaque 902 = Designer White Opaque <i>Curated Finishes:</i> 150 = Conifer Opaque 152 = Cameo Opaque 153 = Cordovan Opaque | Options for foot: G = Glide STD = Standard SVL = Swivel +\$10 |

HGQ115-341.Fabric.Flammability.Base.Wood.Foot Example: HGQ115-341.950-88.U.BL.AH400.GSTD



List Prices

Sq.Ft. Yards Dimensions

Andaz HGQ115-351



| | | | | | | | | | | |
|---------|------|---------|------|-------------|------|----|----|-----------------|-----|-----|
| COM/COL | 1780 | Grade G | 1905 | Leather I | 2210 | 27 | 1½ | OH | 42½ | AH |
| Grade A | 1795 | Grade H | 1930 | Leather II | 2330 | | | OW | 20¾ | WBA |
| Grade B | 1815 | Grade J | 1945 | Leather III | 2450 | | | OD | 21½ | DED |
| Grade C | 1830 | Grade K | 1980 | Leather IV | 2570 | | | SH | 30¾ | DEW |
| Grade D | 1845 | Grade L | 2030 | Leather V | 2690 | | | SD | 17¾ | R |
| Grade E | 1865 | Grade M | 2095 | Leather VI | 2810 | | | | | |
| Grade F | 1885 | | | | | | | | | |
| | | | | | | | | Shipping Weight | | 41 |
| | | | | | | | | Cube | | 35 |

Fully Upholstered Seat and Back - Channel Stitch | Barstool | Mid Back | Ash Shell | Metal Frame - Black Powder Coat

Note: Please contact the HBF Client Experience Team (855-423-2020) or your sales rep for a list of approved textiles.

ANSI/BIFMA LEVEL® Furniture Sustainability Standard certified
Indoor Advantage™ certified

PLEASE SPECIFY THE FOLLOWING TO ORDER:

| MODEL NUMBER | TEXTILES | FLAMMABILITY | STITCH | BASE FINISH | SPECIES & FINISH | FOOT | |
|--------------|---|--|--|---|---|---|---|
| | Indicate fabric choice: <i>See options for fabrics at www.bbf textiles.com</i> | Indicate flammability: U = Cal 117 | Options for thread color: <ul style="list-style-type: none"> 10 = White 20 = Beige 22 = Yellow 39 = Brown 44 = Red 45 = Orange 58 = Blue 67 = Green 77 = Purple 84 = Light Grey 89 = Dark Grey 90 = Black SM = Standard Match | Options for metal leg finish: <ul style="list-style-type: none"> BL = Black Powder Coat WI = White Powder Coat PC = Polished Chrome +\$150 | Options for wood finishes: AH = Ash <ul style="list-style-type: none"> 310 = Smoke Opaque 400 = Clear 402 = Black Opaque 403 = Grey Opaque 404 = Warm White Opaque 405 = Mist Opaque 406 = Denim Opaque 407 = Pewter Opaque 408 = Peppercorn Opaque 901 = Amber 902 = Designer White Opaque 911 = Warm Brick 929 = Nutmeg 937 = Bark 984 = Dark Roast 993 = Sumatra | Options for wood finishes: NE = Maple -\$65 <ul style="list-style-type: none"> 310 = Smoke Opaque 402 = Black Opaque 406 = Denim Opaque 902 = Designer White Opaque <p><i>Core Finishes:</i></p> <ul style="list-style-type: none"> 150 = Conifer Opaque 152 = Cameo Opaque 153 = Cordovan Opaque <p><i>Curated Finishes:</i></p> | Options for foot: G = Glide <ul style="list-style-type: none"> STD = Standard SVL = Swivel +\$10 |

HGQ115-351.Fabric.Flammability.Stitch.Base.Wood.Foot Example: HGQ115-351.950-88.U.SM.BL.AH400.GSTD



List Price

Dimensions

Andaz HGQ115-391



880

OH 31½ AH
OW 20¼ WBA
OD 19½ DED
SH 24 DEW
SD 17⅞ R

Shipping Weight 32
Cube 22

Counter Stool | Low Back | Laminate Shell | Metal Frame - Black Powder Coat

ANSI/BIFMA LEVEL® Furniture Sustainability Standard certified
Indoor Advantage™ certified

PLEASE SPECIFY THE FOLLOWING TO ORDER:

| MODEL NUMBER | BASE FINISH | FINISH | FOOT |
|--------------|---|--|---|
| | Options for metal leg finish: BL = Black Powder Coat WI = White Powder Coat PC = Polished Chrome +\$150 | Options for laminate finishes: PL = Laminate S3022T = Denim SE101SD = Black SG214N = Grey Velvet SG228SD = Peppercorn SW826SD = White | Options for foot: G = Glide STD = Standard SVL = Swivel +\$10 |
| | | | |

HGQ115-391.Base.Finish.Foot Example: HGQ115-391.BL.PLSE101SD.GSTD



List Prices

Sq.Ft. Yards Dimensions

Andaz HGQ115-401



| | | | | | | | | | | |
|----------------|-------------|---------|-------------|-------------|-------------|----|---|-----------------|-----|-----|
| COM/COL | 1130 | Grade G | 1185 | Leather I | 1385 | 18 | 1 | OH | 31½ | AH |
| Grade A | 1110 | Grade H | 1200 | Leather II | 1465 | | | OW | 20¼ | WBA |
| Grade B | 1120 | Grade J | 1210 | Leather III | 1545 | | | OD | 19½ | DED |
| Grade C | 1130 | Grade K | 1230 | Leather IV | 1625 | | | SH | 24¾ | DEW |
| Grade D | 1145 | Grade L | 1265 | Leather V | 1705 | | | SD | 17¾ | R |
| Grade E | 1155 | Grade M | 1310 | Leather VI | 1785 | | | | | |
| Grade F | 1165 | | | | | | | | | |
| | | | | | | | | Shipping Weight | | 32 |
| | | | | | | | | Cube | | 22 |

Fully Upholstered Seat and Back | Counter Stool | Low Back | Laminate Shell | Metal Frame - Black Powder Coat

Note: Please contact the HBF Client Experience Team (855-423-2020) or your sales rep for a list of approved textiles.

PLEASE SPECIFY THE FOLLOWING TO ORDER:

| MODEL NUMBER | TEXTILES | FLAMMABILITY | BASE FINISH | FINISH | FOOT |
|--------------|---|---|--|---|---|
| | Indicate fabric choice: <i>See options for fabrics at www.hbftextiles.com</i> | Indicate flammability: U = Cal 117 | Options for metal leg finish: BL = Black Powder Coat WI = White Powder Coat PC = Polished Chrome +\$150 | Options for laminate finishes: PL = Laminate S3022T = Denim SE101SD = Black SG214N = Grey Velvet SG228SD = Peppercorn SW826SD = White | Options for foot: G = Glide STD = Standard SVL = Swivel +\$10 |
| | | | | | |

HGQ115-401.Fabric.Flammability.Base.Finish.Foot Example: HGQ115-401.950-88.U.BL.PLSE101SD.GSTD



List Prices

Sq.Ft. Yards Dimensions

Andaz HGQ115-411



| | | | | | | | | | | |
|---------|------|---------|------|-------------|------|----|----|-----------------|-----|-----|
| COM/COL | 1360 | Grade G | 1435 | Leather I | 1740 | 27 | 1½ | OH | 31½ | AH |
| Grade A | 1325 | Grade H | 1460 | Leather II | 1860 | | | OW | 20¾ | WBA |
| Grade B | 1345 | Grade J | 1475 | Leather III | 1980 | | | OD | 19½ | DED |
| Grade C | 1360 | Grade K | 1510 | Leather IV | 2100 | | | SH | 24¾ | DEW |
| Grade D | 1375 | Grade L | 1560 | Leather V | 2220 | | | SD | 17¾ | R |
| Grade E | 1395 | Grade M | 1625 | Leather VI | 2340 | | | | | |
| Grade F | 1415 | | | | | | | | | |
| | | | | | | | | Shipping Weight | | 32 |
| | | | | | | | | Cube | | 22 |

Fully Upholstered Seat and Back - Channel Stitch | Counter Stool | Low Back | Laminate Shell | Metal Frame - Black Powder Coat

Note: Please contact the HBF Client Experience Team (855-423-2020) or your sales rep for a list of approved textiles.

PLEASE SPECIFY THE FOLLOWING TO ORDER:

| MODEL NUMBER | TEXTILES | FLAMMABILITY | STITCH | BASE FINISH | FINISH | FOOT |
|--------------|---|---|---|--|---|---|
| | Indicate fabric choice: <i>See options for fabrics at www.bbftextiles.com</i> | Indicate flammability: U = Cal 117 | Options for thread color: 10 = White 20 = Beige 22 = Yellow 39 = Brown 44 = Red 45 = Orange 58 = Blue 67 = Green 77 = Purple 84 = Light Grey 89 = Dark Grey 90 = Black SM = Standard Match | Options for metal leg finish: BL = Black Powder Coat WI = White Powder Coat PC = Polished Chrome +\$150 | Options for laminate finishes: PL = Laminate S3022T = Denim SE101SD = Black SG214N = Grey Velvet SG228SD = Peppercorn SW826SD = White | Options for foot: G = Glide STD = Standard SVL = Swivel +\$10 |

HGQ115-411.Fabric.Flammability.Stitch.Base.Finish.Foot Example: HGQ115-411.950-88.U.SM.BL.PLSE101SD.GSTD



List Price

Dimensions

Andaz HGQ115-421



895

OH 36½ AH
OW 20¼ WBA
OD 19½ DED
SH 24¾ DEW
SD 17⅞ R

Shipping Weight 32
Cube 22

Counter Stool | Mid Back | Laminate Shell | Metal Frame - Black Powder Coat

PLEASE SPECIFY THE FOLLOWING TO ORDER:

| MODEL NUMBER | BASE FINISH | FINISH | FOOT |
|--------------|--|---|---|
| | Options for metal leg finish: BL = Black Powder Coat W1 = White Powder Coat PC = Polished Chrome +\$150 | Options for laminate finishes: PL = Laminate S3022T = Denim SE101SD = Black SG214N = Grey Velvet SG228SD = Peppercorn SW826SD = White | Options for foot: G = Glide STD = Standard SVL = Swivel +\$10 |
| | | | |

HGQ115-421.Base.Finish.Foot Example: HGQ115-421.BL.PLSE101SD.GSTD



List Prices

Sq.Ft. Yards Dimensions

Andaz HGQ115-431



| | | | | | | | | | | |
|----------------|-------------|---------|-------------|-------------|-------------|----|---|-----------------|-----|-----|
| COM/COL | 1110 | Grade G | 1195 | Leather I | 1395 | 18 | 1 | OH | 36½ | AH |
| Grade A | 1140 | Grade H | 1210 | Leather II | 1475 | | | OW | 20¾ | WBA |
| Grade B | 1130 | Grade J | 1220 | Leather III | 1555 | | | OD | 19½ | DED |
| Grade C | 1140 | Grade K | 1240 | Leather IV | 1635 | | | SH | 24¾ | DEW |
| Grade D | 1155 | Grade L | 1275 | Leather V | 1715 | | | SD | 17¾ | R |
| Grade E | 1165 | Grade M | 1320 | Leather VI | 1795 | | | | | |
| Grade F | 1175 | | | | | | | | | |
| | | | | | | | | Shipping Weight | | 32 |
| | | | | | | | | Cube | | 22 |

Fully Upholstered Seat and Back | Counter Stool | Mid Back | Laminate Shell | Metal Frame - Black Powder Coat

Note: Please contact the HBF Client Experience Team (855-423-2020) or your sales rep for a list of approved textiles.

PLEASE SPECIFY THE FOLLOWING TO ORDER:

| MODEL NUMBER | TEXTILES | FLAMMABILITY | BASE FINISH | FINISH | FOOT |
|--------------|---|---|--|---|---|
| | Indicate fabric choice: <i>See options for fabrics at www.hbftextiles.com</i> | Indicate flammability: U = Cal 117 | Options for metal leg finish: BL = Black Powder Coat WI = White Powder Coat PC = Polished Chrome +\$150 | Options for laminate finishes: PL = Laminate S3022T = Denim SE101SD = Black SG214N = Grey Velvet SG228SD = Peppercorn SW826SD = White | Options for foot: G = Glide STD = Standard SVL = Swivel +\$10 |

HGQ115-431.Fabric.Flammability.Base.Finish.Foot Example: HGQ115-431.950-88.U.BL.PLSE101SD.GSTD



List Prices

Sq.Ft. Yards Dimensions

Andaz HGQ115-441



| | | | | | | | | | | |
|---------|------|---------|------|-------------|------|----|----|-----------------|-----|-----|
| COM/COL | 1375 | Grade G | 1450 | Leather I | 1755 | 27 | 1½ | OH | 36½ | AH |
| Grade A | 1340 | Grade H | 1475 | Leather II | 1875 | | | OW | 20¼ | WBA |
| Grade B | 1360 | Grade J | 1490 | Leather III | 1995 | | | OD | 19½ | DED |
| Grade C | 1375 | Grade K | 1525 | Leather IV | 2115 | | | SH | 24¾ | DEW |
| Grade D | 1390 | Grade L | 1575 | Leather V | 2235 | | | SD | 17¾ | R |
| Grade E | 1410 | Grade M | 1640 | Leather VI | 2355 | | | | | |
| Grade F | 1430 | | | | | | | | | |
| | | | | | | | | Shipping Weight | | 32 |
| | | | | | | | | Cube | | 22 |

Fully Upholstered Seat and Back - Channel Stitch | Counter Stool | Mid Back | Laminate Shell | Metal Frame - Black Powder Coat

Note: Please contact the HBF Client Experience Team (855-423-2020) or your sales rep for a list of approved textiles.

PLEASE SPECIFY THE FOLLOWING TO ORDER:

| MODEL NUMBER | TEXTILES | FLAMMABILITY | STITCH | BASE FINISH | FINISH | FOOT |
|--------------|---|---|---|--|---|---|
| | Indicate fabric choice: <i>See options for fabrics at www.bbftextiles.com</i> | Indicate flammability: U = Cal 117 | Options for thread color: 10 = White 20 = Beige 22 = Yellow 39 = Brown 44 = Red 45 = Orange 58 = Blue 67 = Green 77 = Purple 84 = Light Grey 89 = Dark Grey 90 = Black SM = Standard Match | Options for metal leg finish: BL = Black Powder Coat WI = White Powder Coat PC = Polished Chrome +\$150 | Options for laminate finishes: PL = Laminate S3022T = Denim SE101SD = Black SG214N = Grey Velvet SG228SD = Peppercorn SW826SD = White | Options for foot: G = Glide STD = Standard SVL = Swivel +\$10 |

HGQ115-441.Fabric.Flammability.Stitch.Base.Finish.Foot Example: HGQ115-441.950-88.U.SM.BL.PLSE101SD.GSTD



List Price

Dimensions

Andaz HGQ115-451



950

OH 37½ AH
OW 20¼ WBA
OD 20½ DED
SH 30 DEW
SD 17⅞ R

Shipping Weight 32
Cube 22

Barstool | Low Back | Laminate Shell | Metal Frame - Black Powder Coat

PLEASE SPECIFY THE FOLLOWING TO ORDER:

| MODEL NUMBER | BASE FINISH | FINISH | FOOT |
|----------------------|---|--|---|
| | Options for metal leg finish: BL = Black Powder Coat W1 = White Powder Coat PC = Polished Chrome +\$150 | Options for laminate finishes: PL = Laminate S3022T = Denim SE101SD = Black SG214N = Grey Velvet SG228SD = Peppercorn SW826SD = White | Options for foot: G = Glide STD = Standard SVL = Swivel +\$10 |
| <input type="text"/> | <input type="text"/> | <input type="text"/> | <input type="text"/> |

HGQ115-451.Base.Finish.Foot Example: HGQ115-451.BL.PLSE101SD.GSTD



List Prices

Sq.Ft. Yards Dimensions

Andaz HGQ115-461



| | | | | | | | | | | |
|---------|------|---------|------|-------------|------|----|---|-----------------|-----|-----|
| COM/COL | 1200 | Grade G | 1255 | Leather I | 1455 | 18 | 1 | OH | 37½ | AH |
| Grade A | 1180 | Grade H | 1270 | Leather II | 1535 | | | OW | 20¼ | WBA |
| Grade B | 1190 | Grade J | 1280 | Leather III | 1615 | | | OD | 20 | DED |
| Grade C | 1200 | Grade K | 1300 | Leather IV | 1695 | | | SH | 30¾ | DEW |
| Grade D | 1215 | Grade L | 1335 | Leather V | 1775 | | | SD | 17½ | R |
| Grade E | 1225 | Grade M | 1380 | Leather VI | 1855 | | | | | |
| Grade F | 1235 | | | | | | | | | |
| | | | | | | | | Shipping Weight | | 32 |
| | | | | | | | | Cube | | 22 |

Fully Upholstered Seat and Back | Barstool | Low Back | Laminate Shell | Metal Frame - Black Powder Coat

Note: Please contact the HBF Client Experience Team (855-423-2020) or your sales rep for a list of approved textiles.

PLEASE SPECIFY THE FOLLOWING TO ORDER:

| MODEL NUMBER | TEXTILES | FLAMMABILITY | BASE FINISH | FINISH | FOOT |
|--------------|---|---|--|---|---|
| | Indicate fabric choice: <i>See options for fabrics at www.hbftextiles.com</i> | Indicate flammability: U = Cal 117 | Options for metal leg finish: BL = Black Powder Coat WI = White Powder Coat PC = Polished Chrome +\$150 | Options for laminate finishes: PL = Laminate S3022T = Denim SE101SD = Black SG214N = Grey Velvet SG228SD = Peppercorn SW826SD = White | Options for foot: G = Glide STD = Standard SVL = Swivel +\$10 |

HGQ115-461.Fabric.Flammability.Base.Finish.Foot Example: HGQ115-461.950-88.U.BL.PLSE101SD.GSTD



List Prices

Sq.Ft. Yards Dimensions

Andaz HGQ115-471



| | | | | | | | | | | |
|---------|------|---------|------|-------------|------|----|----|-----------------|-----|-----|
| COM/COL | 1495 | Grade G | 1570 | Leather I | 1875 | 27 | 1½ | OH | 37½ | AH |
| Grade A | 1460 | Grade H | 1595 | Leather II | 1995 | | | OW | 20¾ | WBA |
| Grade B | 1480 | Grade J | 1610 | Leather III | 2115 | | | OD | 20 | DED |
| Grade C | 1495 | Grade K | 1645 | Leather IV | 2235 | | | SH | 30¾ | DEW |
| Grade D | 1510 | Grade L | 1695 | Leather V | 2355 | | | SD | 17¾ | R |
| Grade E | 1530 | Grade M | 1760 | Leather VI | 2475 | | | | | |
| Grade F | 1550 | | | | | | | | | |
| | | | | | | | | Shipping Weight | | 32 |
| | | | | | | | | Cube | | 22 |

Fully Upholstered Seat and Back - Channel Stitch | Barstool | Low Back | Laminate Shell | Metal Frame - Black Powder Coat

Note: Please contact the HBF Client Experience Team (855-423-2020) or your sales rep for a list of approved textiles.

PLEASE SPECIFY THE FOLLOWING TO ORDER:

| MODEL NUMBER | TEXTILES | FLAMMABILITY | STITCH | BASE FINISH | FINISH | FOOT |
|--------------|---|---|---|--|---|---|
| | Indicate fabric choice: <i>See options for fabrics at www.bbftextiles.com</i> | Indicate flammability: U = Cal 117 | Options for thread color: 10 = White 20 = Beige 22 = Yellow 39 = Brown 44 = Red 45 = Orange 58 = Blue 67 = Green 77 = Purple 84 = Light Grey 89 = Dark Grey 90 = Black SM = Standard Match | Options for metal leg finish: BL = Black Powder Coat WI = White Powder Coat PC = Polished Chrome +\$150 | Options for laminate finishes: PL = Laminate S3022T = Denim SE101SD = Black SG214N = Grey Velvet SG228SD = Peppercorn SW826SD = White | Options for foot: G = Glide STD = Standard SVL = Swivel +\$10 |

HGQ115-471.Fabric.Flammability.Stitch.Base.Finish.Foot Example: HGQ115-471.950-88.U.SM.BL.PLSE101SD.GSTD



List Price

Dimensions

Andaz HGQ115-481



965

OH 42½ AH
OW 20¼ WBA
OD 21½ DED
SH 30 DEW
SD 17⅞ R

Shipping Weight 35
Cube 29

Barstool | Mid Back | Laminate Shell | Metal Frame - Black Powder Coat

PLEASE SPECIFY THE FOLLOWING TO ORDER:

| MODEL NUMBER | BASE FINISH | FINISH | FOOT |
|--------------|--|---|---|
| | Options for metal leg finish: BL = Black Powder Coat W1 = White Powder Coat PC = Polished Chrome +\$150 | Options for laminate finishes: PL = Laminate S3022T = Denim SE101SD = Black SG214N = Grey Velvet SG228SD = Peppercorn SW826SD = White | Options for foot: G = Glide STD = Standard SVL = Swivel +\$10 |
| | | | |

HGQ115-481.Base.Finish.Foot Example: HGQ115-481.BL.PLSE101SD.GSTD



List Prices

Sq.Ft. Yards Dimensions

Andaz HGQ115-491



| | | | | | | | | | | |
|---------|------|---------|------|-------------|------|----|---|-----------------|-----|-----|
| COM/COL | 1215 | Grade G | 1270 | Leather I | 1470 | 18 | 1 | OH | 42½ | AH |
| Grade A | 1195 | Grade H | 1285 | Leather II | 1550 | | | OW | 20¾ | WBA |
| Grade B | 1205 | Grade J | 1295 | Leather III | 1630 | | | OD | 21½ | DED |
| Grade C | 1215 | Grade K | 1315 | Leather IV | 1710 | | | SH | 30¾ | DEW |
| Grade D | 1230 | Grade L | 1350 | Leather V | 1790 | | | SD | 17¾ | R |
| Grade E | 1240 | Grade M | 1395 | Leather VI | 1870 | | | | | |
| Grade F | 1250 | | | | | | | | | |
| | | | | | | | | Shipping Weight | | 41 |
| | | | | | | | | Cube | | 35 |

Fully Upholstered Seat and Back | Barstool | Mid Back | Laminate Shell | Metal Frame - Black Powder Coat

Note: Please contact the HBF Client Experience Team (855-423-2020) or your sales rep for a list of approved textiles.

PLEASE SPECIFY THE FOLLOWING TO ORDER:

| MODEL NUMBER | TEXTILES | FLAMMABILITY | BASE FINISH | FINISH | FOOT |
|--------------|---|---|--|---|---|
| | Indicate fabric choice: <i>See options for fabrics at www.hbftextiles.com</i> | Indicate flammability: U = Cal 117 | Options for metal leg finish: BL = Black Powder Coat WI = White Powder Coat PC = Polished Chrome +\$150 | Options for laminate finishes: PL = Laminate S3022T = Denim SE101SD = Black SG214N = Grey Velvet SG228SD = Peppercorn SW826SD = White | Options for foot: G = Glide STD = Standard SVL = Swivel +\$10 |

HGQ115-491.Fabric.Flammability.Base.Finish.Foot Example: HGQ115-491.950-88.U.BL.PLSE101SD.GSTD



List Prices

Sq.Ft. Yards Dimensions

Andaz HGQ115-501



| | | | | | | | | | | |
|---------|-------|---------|------|-------------|------|----|----|-----------------|-----|-----|
| COM/COL | 1510 | Grade G | 1585 | Leather I | 1890 | 27 | 1½ | OH | 42½ | AH |
| Grade A | 1475 | Grade H | 1610 | Leather II | 2010 | | | OW | 20¾ | WBA |
| Grade B | 1495 | Grade J | 1625 | Leather III | 2130 | | | OD | 21½ | DED |
| Grade C | 1510 | Grade K | 1660 | Leather IV | 2250 | | | SH | 30¾ | DEW |
| Grade D | 1525 | Grade L | 1710 | Leather V | 2370 | | | SD | 17¾ | R |
| Grade E | 1545 | Grade M | 1775 | Leather VI | 2490 | | | | | |
| Grade F | 1,565 | | | | | | | | | |
| | | | | | | | | Shipping Weight | | 41 |
| | | | | | | | | Cube | | 35 |

Fully Upholstered Seat and Back - Channel Stitch | Barstool | Mid Back | Laminate Shell | Metal Frame - Black Powder Coat

Note: Please contact the HBF Client Experience Team (855-423-2020) or your sales rep for a list of approved textiles.

PLEASE SPECIFY THE FOLLOWING TO ORDER:

| MODEL NUMBER | TEXTILES | FLAMMABILITY | STITCH | BASE FINISH | FINISH | FOOT |
|--------------|---|---|---|--|---|---|
| | Indicate fabric choice: <i>See options for fabrics at www.bbftextiles.com</i> | Indicate flammability: U = Cal 117 | Options for thread color: 10 = White 20 = Beige 22 = Yellow 39 = Brown 44 = Red 45 = Orange 58 = Blue 67 = Green 77 = Purple 84 = Light Grey 89 = Dark Grey 90 = Black SM = Standard Match | Options for metal leg finish: BL = Black Powder Coat WI = White Powder Coat PC = Polished Chrome +\$150 | Options for laminate finishes: PL = Laminate S3022T = Denim SE101SD = Black SG214N = Grey Velvet SG228SD = Peppercorn SW826SD = White | Options for foot: G = Glide STD = Standard SVL = Swivel +\$10 |

HGQ115-501.Fabric.Flammability.Stitch.Base.Finish.Foot Example: HGQ115-501.950-88.U.SM.BL.PLSE101SD.GSTD



Carlyle Series Specifications

Collection Details

Barstool | Counter Stool

Upholstered | Not Upholstered

Wood Options

Frame available in Ash.

Refer to HBF Standard Ash finishes for color selection. Finish selection must be noted on order.

Stretcher Options

Brushed Brass | Brushed Aluminum

Stretcher is standard in brushed aluminum.



List Prices

Sq.Ft. Yards Dimensions

Carlyle with Stretcher HGT115-101



| | | | | | | | | | | |
|---------|------|---------|------|-------------|------|----|----|-----------------|-----|-----|
| COM/COL | 2540 | Grade G | 2615 | Leather I | 2920 | 27 | 1½ | OH | 36¾ | AH |
| Grade A | 2505 | Grade H | 2640 | Leather II | 3040 | | | OW | 18¾ | WBA |
| Grade B | 2525 | Grade J | 2655 | Leather III | 3160 | | | OD | 20½ | DED |
| Grade C | 2540 | Grade K | 2690 | Leather IV | 3280 | | | SH | 25 | DEW |
| Grade D | 2555 | Grade L | 2740 | Leather V | 3400 | | | SD | 15¼ | R |
| Grade E | 2575 | Grade M | 2805 | Leather VI | 3520 | | | | | |
| Grade F | 2595 | | | | | | | | | |
| | | | | | | | | Shipping Weight | | 42 |
| | | | | | | | | Cube | | 25 |

Counter Stool - Ash Frame | Fully Upholstered Seat and Back | Aluminum Stretcher

Product rated at 350 lbs.

Note: Stretcher version recommended for high traffic use.

ANSI/BIFMA LEVEL® Furniture Sustainability Standard certified
Indoor Advantage™ certified

PLEASE SPECIFY THE FOLLOWING TO ORDER:

| MODEL NUMBER | TEXTILES | FLAMMABILITY | SPECIES & FINISH | FINISH OPTION: STRETCHER |
|--------------|---|---|---|--|
| | Indicate fabric choice: <i>See options for fabrics at www.hbftextiles.com</i> | Indicate flammability: U = Cal 117 | Options for wood finishes: AH = Ash 310 = Smoke Opaque 400 = Clear 402 = Black Opaque 403 = Grey Opaque 404 = Warm White Opaque 405 = Mist Opaque 406 = Denim Opaque 407 = Pewter Opaque 408 = Peppercorn Opaque 901 = Amber 902 = Designer White Opaque 911 = Warm Brick 929 = Nutmeg 937 = Bark 984 = Dark Roast 993 = Sumatra | BA = Brushed Aluminum BB = Brushed Brass +\$100 |

HGT115-101.Fabric.Flammability.Wood.Finish Example: HGT115-101.950-88.U.AH400.BA



List Prices

Sq.Ft. Yards Dimensions

Carlyle with Stretcher HGT115-121



| | | | | | | | | | | |
|---------|------|---------|------|-------------|------|----|----|-----------------|-----|-----|
| COM/COL | 2645 | Grade G | 2720 | Leather I | 3025 | 27 | 1½ | OH | 42¾ | AH |
| Grade A | 2610 | Grade H | 2745 | Leather II | 3145 | | | OW | 18¾ | WBA |
| Grade B | 2630 | Grade J | 2760 | Leather III | 3265 | | | OD | 20½ | DED |
| Grade C | 2645 | Grade K | 2795 | Leather IV | 3385 | | | SH | 31 | DEW |
| Grade D | 2660 | Grade L | 2845 | Leather V | 3505 | | | SD | 15¼ | R |
| Grade E | 2680 | Grade M | 2910 | Leather VI | 3625 | | | | | |
| Grade F | 2700 | | | | | | | | | |
| | | | | | | | | Shipping Weight | | 47 |
| | | | | | | | | Cube | | 28 |

Barstool - Ash Frame | Fully Upholstered Seat and Back | Aluminum Stretcher

Product rated at 350 lbs.

Note: Stretcher version recommended for high traffic use.

ANSI/BIFMA LEVEL® Furniture Sustainability Standard certified
Indoor Advantage™ certified

PLEASE SPECIFY THE FOLLOWING TO ORDER:

| MODEL NUMBER | TEXTILES | FLAMMABILITY | SPECIES & FINISH | FINISH OPTION: STRETCHER |
|--------------|---|---|---|--|
| | Indicate fabric choice: <i>See options for fabrics at www.hbftextiles.com</i> | Indicate flammability: U = Cal 117 | Options for wood finishes: AH = Ash 310 = Smoke Opaque 400 = Clear 402 = Black Opaque 403 = Grey Opaque 404 = Warm White Opaque 405 = Mist Opaque 406 = Denim Opaque 407 = Pewter Opaque 408 = Peppercorn Opaque 901 = Amber 902 = Designer White Opaque 911 = Warm Brick 929 = Nutmeg 937 = Bark 984 = Dark Roast 993 = Sumatra | BA = Brushed Aluminum BB = Brushed Brass +\$100 |

HGT115-121.Fabric.Flammability.Wood.Finish Example: HGT115-121.950-88.U.AH400.BA



Enpointe Specifications

Overview Counter Height | Bar Height | Wood Seat | Upholstered Seat

Metal Finish Powder Coat | Polished Chrome

Wood Seat Ash | Walnut

| | List Price | Dimensions |
|--|------------|---|
| Enpointe HGC517-011 | 1745 | OH 24 AH OW 16 WBA OD 15½ DED SH 24 DEW SD 14 R |
|  | | Shipping Weight Cube |

Counter Stool | Wood Seat | Metal Base | Ash Legs and Seat


ANSI/BIFMA LEVEL* Furniture Sustainability Standard certified
Indoor Advantage™ certified

PLEASE SPECIFY THE FOLLOWING TO ORDER: _____

| MODEL NUMBER | BASE FINISH | SPECIES & FINISH | |
|--------------|------------------------------|-----------------------------|-----------------------------|
| | Options for metal: | Options for wood finishes: | Options for wood finishes: |
| | BL = Black Powder Coat | AH = Ash | NT = Walnut +\$115 |
| | WI = White Powder Coat | 310 = Smoke Opaque | 310 = Smoke Opaque |
| | LG = Light Grey Powder Coat | 400 = Clear | 400 = Clear |
| | POL = Polished Chrome +\$200 | 402 = Black Opaque | 402 = Black Opaque |
| | | 403 = Grey Opaque | 403 = Grey Opaque |
| | | 404 = Warm White Opaque | 404 = Warm White Opaque |
| | | 405 = Mist Opaque | 405 = Mist Opaque |
| | | 406 = Denim Opaque | 406 = Denim Opaque |
| | | 407 = Pewter Opaque | 407 = Pewter Opaque |
| | | 408 = Peppercorn Opaque | 408 = Peppercorn Opaque |
| | | 901 = Amber | 902 = Designer White Opaque |
| | | 902 = Designer White Opaque | 911 = Warm Brick |
| | | 911 = Warm Brick | 929 = Nutmeg |
| | | 929 = Nutmeg | 937 = Bark |
| | | 937 = Bark | 984 = Dark Roast |
| | | 984 = Dark Roast | 993 = Sumatra |
| | | 993 = Sumatra | |

HGC517-011.Base.Wood Example: HGC517-011.BL.AH310



| | List Prices | | | | Sq.Ft. | Yards | Dimensions | | | |
|--|-------------|-------------|---------|-------------|-------------|-------------|------------|---|-----------------|-----|
| Enpointe HGC517-031 | | | | | | | | | | |
|  | COM/COL | 1850 | Grade G | 1865 | Leather I | 1915 | 4½ | ¼ | OH 24½ | AH |
| | Grade A | 1845 | Grade H | 1870 | Leather II | 1935 | | | OW 16 | WBA |
| | Grade B | 1850 | Grade J | 1870 | Leather III | 1955 | | | OD 15½ | DED |
| | Grade C | 1850 | Grade K | 1875 | Leather IV | 1975 | | | SH 24½ | DEW |
| | Grade D | 1855 | Grade L | 1885 | Leather V | 1995 | | | SD 14 | R |
| | Grade E | 1855 | Grade M | 1895 | Leather VI | 2015 | | | | |
| | Grade F | 1860 | | | | | | | | |
| | | | | | | | | | Shipping Weight | |
| | | | | | | | | | Cube | |

Counter Stool | Upholstered Seat | Metal Base | Ash Legs

ANSI/BIFMA LEVEL® Furniture Sustainability Standard certified
Indoor Advantage™ certified

PLEASE SPECIFY THE FOLLOWING TO ORDER:

| MODEL NUMBER | TEXTILES | FLAMMABILITY | BASE FINISH | SPECIES & FINISH |
|--------------|---|---|---|---|
| | Indicate fabric choice: <i>See options for fabrics at www.hbftextiles.com</i> | Indicate flammability: U = Cal 117 | Options for metal: BL = Black Powder Coat WI = White Powder Coat LG = Light Grey Powder Coat POL = Polished Chrome +\$200 | Options for wood finishes: AH = Ash 310 = Smoke Opaque 400 = Clear 402 = Black Opaque 403 = Grey Opaque 404 = Warm White Opaque 405 = Mist Opaque 406 = Denim Opaque 407 = Pewter Opaque 408 = Peppercorn Opaque 901 = Amber 902 = Designer White Opaque 911 = Warm Brick 929 = Nutmeg 937 = Bark 984 = Dark Roast 993 = Sumatra |
| | | | | Options for wood finishes: NT = Walnut +\$115 310 = Smoke Opaque 400 = Clear 402 = Black Opaque 403 = Grey Opaque 404 = Warm White Opaque 405 = Mist Opaque 406 = Denim Opaque 407 = Pewter Opaque 408 = Peppercorn Opaque 902 = Designer White Opaque 911 = Warm Brick 929 = Nutmeg 937 = Bark 984 = Dark Roast 993 = Sumatra |

HGC517-031.Fabric.Flammability.Base.Wood Example: HGC517-031.300-18.U.BL.AH310



List Price

Dimensions

Enpointe HGC517-021



1875

OH 30 AH
OW 18 WBA
OD 17 1/2 DED
SH 30 DEW
SD 14 R

Shipping Weight
Cube

Barstool | Wood Seat | Metal Base | Ash Legs and Seat

ANSI/BIFMA LEVEL® Furniture Sustainability Standard certified
Indoor Advantage™ certified

PLEASE SPECIFY THE FOLLOWING TO ORDER:

Table with columns: MODEL NUMBER, BASE FINISH, SPECIES & FINISH. Includes options for metal, wood finishes, and species like Walnut.

HGC517-021.Base.Wood Example: HGC517-021.BL.AH310



List Prices

Sq.Ft. Yards Dimensions

Enpointe HGC517-041



| | | | | | | | | | | |
|---------|------|---------|------|-------------|------|----|---|----|-----|-----|
| COM/COL | 2010 | Grade G | 2025 | Leather I | 2075 | 4½ | ¼ | OH | 30½ | AH |
| Grade A | 2005 | Grade H | 2030 | Leather II | 2095 | | | OW | 18 | WBA |
| Grade B | 2010 | Grade J | 2030 | Leather III | 2115 | | | OD | 17½ | DED |
| Grade C | 2010 | Grade K | 2035 | Leather IV | 2135 | | | SH | 30½ | DEW |
| Grade D | 2015 | Grade L | 2045 | Leather V | 2155 | | | SD | 14 | R |
| Grade E | 2015 | Grade M | 2055 | Leather VI | 2175 | | | | | |
| Grade F | 2020 | | | | | | | | | |

Shipping Weight
Cube

Barstool | Upholstered Seat | Metal Base | Ash Legs

ANSI/BIFMA LEVEL® Furniture Sustainability Standard certified
Indoor Advantage™ certified

PLEASE SPECIFY THE FOLLOWING TO ORDER:

| MODEL NUMBER | TEXTILES | FLAMMABILITY | BASE FINISH | SPECIES & FINISH |
|--------------|---|---|---|---|
| | Indicate fabric choice: <i>See options for fabrics at www.hbftextiles.com</i> | Indicate flammability: U = Cal 117 | Options for metal: BL = Black Powder Coat WI = White Powder Coat LG = Light Grey Powder Coat POL = Polished Chrome +\$200 | Options for wood finishes: AH = Ash 310 = Smoke Opaque 400 = Clear 402 = Black Opaque 403 = Grey Opaque 404 = Warm White Opaque 405 = Mist Opaque 406 = Denim Opaque 407 = Pewter Opaque 408 = Peppercorn Opaque 901 = Amber 902 = Designer White Opaque 911 = Warm Brick 929 = Nutmeg 937 = Bark 984 = Dark Roast 993 = Sumatra |
| | | | | Options for wood finishes: NT = Walnut +\$115 310 = Smoke Opaque 400 = Clear 402 = Black Opaque 403 = Grey Opaque 404 = Warm White Opaque 405 = Mist Opaque 406 = Denim Opaque 407 = Pewter Opaque 408 = Peppercorn Opaque 902 = Designer White Opaque 911 = Warm Brick 929 = Nutmeg 937 = Bark 984 = Dark Roast 993 = Sumatra |

HGC517-041.Fabric.Flammability.Base.Wood Example: HGC517-041.300-18.U.BL.AH310




Essens Specifications

Overview Sculpted Wood Back | Sculpted Wood Seat | Upholstered Seat Pad
Metal Base | Standard Glide | Self-Return Swivel

Wood Oak | Walnut

Metal Powder Coat | Polished Chrome

| | List Prices | | | | Sq.Ft. | Yards | Dimensions | | | |
|--|----------------|-------------|---------|-------------|-------------|-------------|------------|---|--------|-------------------------|
| Essens HGE117-011 | | | | | | | | | | |
|  | COM/COL | 1440 | Grade G | 1465 | Leather I | 1565 | 9 | ½ | OH 24 | AH |
| | Grade A | 1425 | Grade H | 1470 | Leather II | 1605 | | | OW 19½ | WBA |
| | Grade B | 1435 | Grade J | 1475 | Leather III | 1645 | | | OD 19½ | DED |
| | Grade C | 1440 | Grade K | 1490 | Leather IV | 1685 | | | SH 24 | DEW |
| | Grade D | 1445 | Grade L | 1505 | Leather V | 1725 | | | SD 15 | R |
| | Grade E | 1450 | Grade M | 1525 | Leather VI | 1765 | | | | |
| | Grade F | 1455 | | | | | | | | |
| | | | | | | | | | | Shipping Weight Cube |

Counter Stool | Oak Seat with Upholstered Seat Pad | Tube Base | Standard Glides


ANSI/BIFMA LEVEL® Furniture Sustainability Standard certified
Indoor Advantage™ certified

PLEASE SPECIFY THE FOLLOWING TO ORDER: _____

| MODEL NUMBER | TEXTILES | FLAMMABILITY | BASE FINISH | SPECIES & FINISH |
|--------------|--|---|---|---|
| | Indicate fabric choice: <i>See options for fabrics at www.hbftextiles.com</i> | Indicate flammability: U = Cal 117 | Options for metal: BL = Black Powder Coat WI = White Powder Coat LG = Light Grey Powder Coat POL = Polished Chrome +\$190 | Options for wood finishes: RK = Oak 310 = Smoke Opaque 400 = Clear 402 = Black Opaque 403 = Grey Opaque 404 = Warm White Opaque 405 = Mist Opaque 406 = Denim Opaque 407 = Pewter Opaque 408 = Peppercorn Opaque 901 = Amber 902 = Designer White Opaque 911 = Warm Brick 929 = Nutmeg 937 = Bark 984 = Dark Roast 993 = Sumatra |
| | | | | Options for wood finishes: NT = Walnut +\$125 310 = Smoke Opaque 400 = Clear 402 = Black Opaque 403 = Grey Opaque 404 = Warm White Opaque 405 = Mist Opaque 406 = Denim Opaque 407 = Pewter Opaque 408 = Peppercorn Opaque 902 = Designer White Opaque 911 = Warm Brick 929 = Nutmeg 937 = Bark 984 = Dark Roast 993 = Sumatra |

HGE117-011.Fabric.Flammability.Base.Wood Example: HGE117-011.300-18.U.BL.RK310



| | List Prices | | | | Sq.Ft. | Yards | Dimensions | | | | | |
|--|-------------|------|---------|------|-------------|-------|------------|---|-------------------------|-----|-----|-----|
| Essens HGE117-031 | | | | | | | | | | | | |
|  | COM/COL | 2160 | Grade G | 2185 | Leather I | 2285 | 9 | ½ | OH | 34¾ | AH | 31½ |
| | Grade A | 2145 | Grade H | 2190 | Leather II | 2325 | | | OW | 21⅞ | WBA | 19⅞ |
| | Grade B | 2155 | Grade J | 2195 | Leather III | 2365 | | | OD | 18 | DED | |
| | Grade C | 2160 | Grade K | 2210 | Leather IV | 2405 | | | SH | 24 | DEW | |
| | Grade D | 2165 | Grade L | 2225 | Leather V | 2445 | | | SD | 15 | R | |
| | Grade E | 2170 | Grade M | 2245 | Leather VI | 2485 | | | | | | |
| | Grade F | 2175 | | | | | | | | | | |
| | | | | | | | | | Shipping Weight Cube | | | |

Counter Stool | Oak Back, Seat, and Arms | Upholstered Seat Pad | Tube Base | Standard Glides

ANSI/BIFMA LEVEL® Furniture Sustainability Standard certified
Indoor Advantage™ certified

PLEASE SPECIFY THE FOLLOWING TO ORDER:

| MODEL NUMBER | TEXTILES | FLAMMABILITY | BASE FINISH | SPECIES & FINISH |
|--------------|---|---|---|---|
| | Indicate fabric choice: <i>See options for fabrics at www.hbftextiles.com</i> | Indicate flammability: U = Cal 117 | Options for metal: BL = Black Powder Coat WI = White Powder Coat LG = Light Grey Powder Coat POL = Polished Chrome +\$335 | Options for wood finishes: RK = Oak 310 = Smoke Opaque 400 = Clear 402 = Black Opaque 403 = Grey Opaque 404 = Warm White Opaque 405 = Mist Opaque 406 = Denim Opaque 407 = Pewter Opaque 408 = Peppercorn Opaque 901 = Amber 902 = Designer White Opaque 911 = Warm Brick 929 = Nutmeg 937 = Bark 984 = Dark Roast 993 = Sumatra |
| | | | | Options for wood finishes: NT = Walnut +\$355 310 = Smoke Opaque 400 = Clear 402 = Black Opaque 403 = Grey Opaque 404 = Warm White Opaque 405 = Mist Opaque 406 = Denim Opaque 407 = Pewter Opaque 408 = Peppercorn Opaque 902 = Designer White Opaque 911 = Warm Brick 929 = Nutmeg 937 = Bark 984 = Dark Roast 993 = Sumatra |

HGE117-031.Fabric.Flammability.Base.Wood Example: HGE117-031.300-18.U.BL.RK310



List Prices

Sq.Ft. Yards Dimensions

Essens HGE119-141



| | | | | | | | | | | |
|---------|------|---------|------|-------------|------|---|-----|----|--------|-----|
| COM/COL | 1770 | Grade G | 1795 | Leather I | 1895 | 9 | 1/2 | OH | 24 | AH |
| Grade A | 1755 | Grade H | 1800 | Leather II | 1935 | | | OW | 19 3/8 | WBA |
| Grade B | 1765 | Grade J | 1805 | Leather III | 1975 | | | OD | 19 3/8 | DED |
| Grade C | 1770 | Grade K | 1820 | Leather IV | 2015 | | | SH | 24 | DEW |
| Grade D | 1775 | Grade L | 1835 | Leather V | 2055 | | | SD | 15 | R |
| Grade E | 1780 | Grade M | 1855 | Leather VI | 2095 | | | | | |
| Grade F | 1785 | | | | | | | | | |

Shipping Weight
Cube

Counter Stool | Oak Seat with Upholstered Seat Pad | Tube Base with Self-Return Swivel | Standard Glides


ANSI/BIFMA LEVEL® Furniture Sustainability Standard certified
Indoor Advantage™ certified

PLEASE SPECIFY THE FOLLOWING TO ORDER:

| MODEL NUMBER | TEXTILES | FLAMMABILITY | BASE FINISH | SPECIES & FINISH |
|--------------|---|---|---|---|
| | Indicate fabric choice: <i>See options for fabrics at www.hbftextiles.com</i> | Indicate flammability: U = Cal 117 | Options for metal: BL = Black Powder Coat WI = White Powder Coat LG = Light Grey Powder Coat POL = Polished Chrome +\$190 | Options for wood finishes: RK = Oak 310 = Smoke Opaque 400 = Clear 402 = Black Opaque 403 = Grey Opaque 404 = Warm White Opaque 405 = Mist Opaque 406 = Denim Opaque 407 = Pewter Opaque 408 = Peppercorn Opaque 901 = Amber 902 = Designer White Opaque 911 = Warm Brick 929 = Nutmeg 937 = Bark 984 = Dark Roast 993 = Sumatra |
| | | | | Options for wood finishes: NT = Walnut +\$125 310 = Smoke Opaque 400 = Clear 402 = Black Opaque 403 = Grey Opaque 404 = Warm White Opaque 405 = Mist Opaque 406 = Denim Opaque 407 = Pewter Opaque 408 = Peppercorn Opaque 902 = Designer White Opaque 911 = Warm Brick 929 = Nutmeg 937 = Bark 984 = Dark Roast 993 = Sumatra |

HGE119-141.Fabric.Flammability.Base.Wood Example: HGE119-141.300-18.U.BL.RK310



| | List Prices | | | | Sq.Ft. | Yards | Dimensions | | | | | |
|--|-------------|-------------|---------|-------------|-------------|-------------|------------|---|-----------------|-----|-----|-----|
| Essens HGE119-161 | | | | | | | | | | | | |
|  | COM/COL | 2480 | Grade G | 2505 | Leather I | 2605 | 9 | ½ | OH | 34¾ | AH | 31½ |
| | Grade A | 2465 | Grade H | 2510 | Leather II | 2645 | | | OW | 21⅞ | WBA | 19⅞ |
| | Grade B | 2475 | Grade J | 2515 | Leather III | 2685 | | | OD | 18 | DED | |
| | Grade C | 2480 | Grade K | 2530 | Leather IV | 2725 | | | SH | 24 | DEW | |
| | Grade D | 2485 | Grade L | 2545 | Leather V | 2765 | | | SD | 15 | R | |
| | Grade E | 2490 | Grade M | 2565 | Leather VI | 2805 | | | | | | |
| | Grade F | 2495 | | | | | | | | | | |
| | | | | | | | | | Shipping Weight | | | |
| | | | | | | | | | Cube | | | |

Counter Stool | Oak Back, Seat, and Arms | Upholstered Seat Pad | Tube Base with Self-Return Swivel | Standard Glides


ANSI/BIFMA LEVEL® Furniture Sustainability Standard certified
Indoor Advantage™ certified

PLEASE SPECIFY THE FOLLOWING TO ORDER:

| MODEL NUMBER | TEXTILES | FLAMMABILITY | BASE FINISH | SPECIES & FINISH |
|--------------|---|---|---|---|
| | Indicate fabric choice: <i>See options for fabrics at www.hbftextiles.com</i> | Indicate flammability: U = Cal 117 | Options for metal: BL = Black Powder Coat WI = White Powder Coat LG = Light Grey Powder Coat POL = Polished Chrome +\$335 | Options for wood finishes: RK = Oak 310 = Smoke Opaque 400 = Clear 402 = Black Opaque 403 = Grey Opaque 404 = Warm White Opaque 405 = Mist Opaque 406 = Denim Opaque 407 = Pewter Opaque 408 = Peppercorn Opaque 901 = Amber 902 = Designer White Opaque 911 = Warm Brick 929 = Nutmeg 937 = Bark 984 = Dark Roast 993 = Sumatra |
| | | | | Options for wood finishes: NT = Walnut +\$355 310 = Smoke Opaque 400 = Clear 402 = Black Opaque 403 = Grey Opaque 404 = Warm White Opaque 405 = Mist Opaque 406 = Denim Opaque 407 = Pewter Opaque 408 = Peppercorn Opaque 902 = Designer White Opaque 911 = Warm Brick 929 = Nutmeg 937 = Bark 984 = Dark Roast 993 = Sumatra |

HGE119-161.Fabric.Flammability.Base.Wood Example: HGE119-161.300-18.U.BL.RK310



| | List Prices | | | | Sq.Ft. | Yards | Dimensions | | | |
|--|-------------|------|---------|------|-------------|-------|------------|-----|-------------------------|-----|
| Essens HGE117-021 | | | | | | | | | | |
|  | COM/COL | 1460 | Grade G | 1485 | Leather I | 1585 | 9 | 1/2 | OH 30 | AH |
| | Grade A | 1445 | Grade H | 1490 | Leather II | 1625 | | | OW 19 3/8 | WBA |
| | Grade B | 1455 | Grade J | 1495 | Leather III | 1665 | | | OD 19 3/8 | DED |
| | Grade C | 1460 | Grade K | 1510 | Leather IV | 1705 | | | SH 30 | DEW |
| | Grade D | 1465 | Grade L | 1525 | Leather V | 1745 | | | SD 15 | R |
| | Grade E | 1470 | Grade M | 1545 | Leather VI | 1785 | | | | |
| | Grade F | 1475 | | | | | | | | |
| | | | | | | | | | Shipping Weight Cube | |

Barstool | Oak Seat with Upholstered Seat Pad | Tube Base | Standard Glides

ANSI/BIFMA LEVEL® Furniture Sustainability Standard certified
Indoor Advantage™ certified

PLEASE SPECIFY THE FOLLOWING TO ORDER:

| MODEL NUMBER | TEXTILES | FLAMMABILITY | BASE FINISH | SPECIES & FINISH |
|--------------|--|---|---|---|
| | Indicate fabric choice: <i>See options for fabrics at www.hbftextiles.com</i> | Indicate flammability: U = Cal 117 | Options for metal: BL = Black Powder Coat WI = White Powder Coat LG = Light Grey Powder Coat POL = Polished Chrome +\$190 | Options for wood finishes: RK = Oak 310 = Smoke Opaque 400 = Clear 402 = Black Opaque 403 = Grey Opaque 404 = Warm White Opaque 405 = Mist Opaque 406 = Denim Opaque 407 = Pewter Opaque 408 = Peppercorn Opaque 901 = Amber 902 = Designer White Opaque 911 = Warm Brick 929 = Nutmeg 937 = Bark 984 = Dark Roast 993 = Sumatra |
| | | | | Options for wood finishes: NT = Walnut +\$125 310 = Smoke Opaque 400 = Clear 402 = Black Opaque 403 = Grey Opaque 404 = Warm White Opaque 405 = Mist Opaque 406 = Denim Opaque 407 = Pewter Opaque 408 = Peppercorn Opaque 902 = Designer White Opaque 911 = Warm Brick 929 = Nutmeg 937 = Bark 984 = Dark Roast 993 = Sumatra |

HGE117-021.Fabric.Flammability.Base.Wood Example: HGE117-021.300-18.U.BL.RK310



| | List Prices | | Sq.Ft. | Yards | Dimensions |
|--|-------------|--|--------|-------|------------|
|--|-------------|--|--------|-------|------------|

Essens HGE117-041



| | | | | | | | | | | | |
|---------|-------------|---------|-------------|-------------|-------------|---|---|----|-----|-----|-----|
| COM/COL | 2185 | Grade G | 2210 | Leather I | 2310 | 9 | ½ | OH | 40¾ | AH | 37½ |
| Grade A | 2170 | Grade H | 2215 | Leather II | 2350 | | | OW | 21⅞ | WBA | 19⅞ |
| Grade B | 2180 | Grade J | 2220 | Leather III | 2390 | | | OD | 18 | DED | |
| Grade C | 2185 | Grade K | 2235 | Leather IV | 2430 | | | SH | 30 | DEW | |
| Grade D | 2190 | Grade L | 2250 | Leather V | 2470 | | | SD | 15 | R | |
| Grade E | 2195 | Grade M | 2270 | Leather VI | 2510 | | | | | | |
| Grade F | 2200 | | | | | | | | | | |

Shipping Weight
Cube

Barstool | Oak Back, Seat, and Arms | Upholstered Seat Pad | Tube Base | Standard Glides


ANSI/BIFMA LEVEL® Furniture Sustainability Standard certified
Indoor Advantage™ certified

PLEASE SPECIFY THE FOLLOWING TO ORDER:

| MODEL NUMBER | TEXTILES | FLAMMABILITY | BASE FINISH | SPECIES & FINISH |
|--------------|---|---|---|---|
| | Indicate fabric choice: <i>See options for fabrics at www.hbftextiles.com</i> | Indicate flammability: U = Cal 117 | Options for metal: BL = Black Powder Coat WI = White Powder Coat LG = Light Grey Powder Coat POL = Polished Chrome +\$335 | Options for wood finishes: RK = Oak 310 = Smoke Opaque 400 = Clear 402 = Black Opaque 403 = Grey Opaque 404 = Warm White Opaque 405 = Mist Opaque 406 = Denim Opaque 407 = Pewter Opaque 408 = Peppercorn Opaque 901 = Amber 902 = Designer White Opaque 911 = Warm Brick 929 = Nutmeg 937 = Bark 984 = Dark Roast 993 = Sumatra |
| | | | | Options for wood finishes: NT = Walnut +\$355 310 = Smoke Opaque 400 = Clear 402 = Black Opaque 403 = Grey Opaque 404 = Warm White Opaque 405 = Mist Opaque 406 = Denim Opaque 407 = Pewter Opaque 408 = Peppercorn Opaque 902 = Designer White Opaque 911 = Warm Brick 929 = Nutmeg 937 = Bark 984 = Dark Roast 993 = Sumatra |

HGE117-041.Fabric.Flammability.Base.Wood Example: HGE117-041.300-18.U.BL.RK310



| | List Prices | | | | Sq.Ft. | Yards | Dimensions | | | |
|--|-------------|------|---------|------|-------------|-------|------------|-----|-------------------------|-----|
| Essens HGE119-151 | | | | | | | | | | |
|  | COM/COL | 1785 | Grade G | 1810 | Leather I | 1910 | 9 | 1/2 | OH 30 | AH |
| | Grade A | 1770 | Grade H | 1815 | Leather II | 1950 | | | OW 19 3/8 | WBA |
| | Grade B | 1780 | Grade J | 1820 | Leather III | 1990 | | | OD 19 3/8 | DED |
| | Grade C | 1785 | Grade K | 1835 | Leather IV | 2030 | | | SH 30 | DEW |
| | Grade D | 1790 | Grade L | 1850 | Leather V | 2070 | | | SD 15 | R |
| | Grade E | 1795 | Grade M | 1870 | Leather VI | 2110 | | | | |
| | Grade F | 1800 | | | | | | | | |
| | | | | | | | | | Shipping Weight Cube | |

Barstool | Oak Seat with Upholstered Seat Pad | Tube Base with Self-Return Swivel | Standard Glides


ANSI/BIFMA LEVEL® Furniture Sustainability Standard certified
Indoor Advantage™ certified

PLEASE SPECIFY THE FOLLOWING TO ORDER: _____

| MODEL NUMBER | TEXTILES | FLAMMABILITY | BASE FINISH | SPECIES & FINISH |
|--------------|--|---|---|---|
| | Indicate fabric choice: <i>See options for fabrics at www.hbftextiles.com</i> | Indicate flammability: U = Cal 117 | Options for metal: BL = Black Powder Coat WI = White Powder Coat LG = Light Grey Powder Coat POL = Polished Chrome +\$190 | Options for wood finishes: RK = Oak 310 = Smoke Opaque 400 = Clear 402 = Black Opaque 403 = Grey Opaque 404 = Warm White Opaque 405 = Mist Opaque 406 = Denim Opaque 407 = Pewter Opaque 408 = Peppercorn Opaque 901 = Amber 902 = Designer White Opaque 911 = Warm Brick 929 = Nutmeg 937 = Bark 984 = Dark Roast 993 = Sumatra |
| | | | | Options for wood finishes: NT = Walnut +\$125 310 = Smoke Opaque 400 = Clear 402 = Black Opaque 403 = Grey Opaque 404 = Warm White Opaque 405 = Mist Opaque 406 = Denim Opaque 407 = Pewter Opaque 408 = Peppercorn Opaque 902 = Designer White Opaque 911 = Warm Brick 929 = Nutmeg 937 = Bark 984 = Dark Roast 993 = Sumatra |

HGE119-151.Fabric.Flammability.Base.Wood Example: HGE119-151.300-18.U.BL.RK310



| | List Prices | | Sq.Ft. | Yards | Dimensions | | | | | | | |
|--|-------------|------|---------|-------|-------------|------|---|---|-------------------------|-----|-----|-----|
| Essens HGE119-171 | | | | | | | | | | | | |
|  | COM/COL | 2510 | Grade G | 2535 | Leather I | 2675 | 9 | ½ | OH | 40¾ | AH | 37½ |
| | Grade A | 2495 | Grade H | 2540 | Leather II | 2715 | | | OW | 21⅞ | WBA | 19% |
| | Grade B | 2505 | Grade J | 2560 | Leather III | 2755 | | | OD | 18 | DED | |
| | Grade C | 2510 | Grade K | 2575 | Leather IV | 2795 | | | SH | 30 | DEW | |
| | Grade D | 2515 | Grade L | 2595 | Leather V | 2835 | | | SD | 15 | R | |
| | Grade E | 2520 | Grade M | 2635 | Leather VI | | | | | | | |
| | Grade F | 2525 | | | | | | | | | | |
| | | | | | | | | | Shipping Weight Cube | | | |

Barstool | Oak Back, Seat, and Arms | Upholstered Seat Pad | Tube Base with Self-Return Swivel | Standard Glides

ANSI/BIFMA LEVEL® Furniture Sustainability Standard certified
Indoor Advantage™ certified

PLEASE SPECIFY THE FOLLOWING TO ORDER:

| MODEL NUMBER | TEXTILES | FLAMMABILITY | BASE FINISH | SPECIES & FINISH |
|--------------|---|---|---|---|
| | Indicate fabric choice: <i>See options for fabrics at www.hbftextiles.com</i> | Indicate flammability: U = Cal 117 | Options for metal: BL = Black Powder Coat WI = White Powder Coat LG = Light Grey Powder Coat POL = Polished Chrome +\$335 | Options for wood finishes: RK = Oak 310 = Smoke Opaque 400 = Clear 402 = Black Opaque 403 = Grey Opaque 404 = Warm White Opaque 405 = Mist Opaque 406 = Denim Opaque 407 = Pewter Opaque 408 = Peppercorn Opaque 901 = Amber 902 = Designer White Opaque 911 = Warm Brick 929 = Nutmeg 937 = Bark 984 = Dark Roast 993 = Sumatra |
| | | | | Options for wood finishes: NT = Walnut +\$355 310 = Smoke Opaque 400 = Clear 402 = Black Opaque 403 = Grey Opaque 404 = Warm White Opaque 405 = Mist Opaque 406 = Denim Opaque 407 = Pewter Opaque 408 = Peppercorn Opaque 902 = Designer White Opaque 911 = Warm Brick 929 = Nutmeg 937 = Bark 984 = Dark Roast 993 = Sumatra |

HGE119-171.Fabric.Flammability.Base.Wood Example: HGE119-171.300-18.U.BL.RK310



Gubi® Beetle Specifications

Overview Plastic outer shell | Plastic seat and back | Upholstered seat | Upholstered seat and back | Metal base

Shell Available in 4 different colors



Base Black Powder Coat Metal | Brass

| | List Price | Dimensions |
|--------------------------------|------------|------------|
| Gubi® Beetle HGG217-041 | 855 | |



| | | |
|----|-----|-----|
| OH | 42½ | AH |
| OW | 22¼ | WBA |
| OD | 21½ | DED |
| SH | 27 | DEW |
| SD | 17¾ | R |

Shipping Weight
Cube

Counter Stool | Plastic Shell | Metal Base

Product rated at 225 lbs.

Indoor Advantage™ certified

PLEASE SPECIFY THE FOLLOWING TO ORDER: _____

| MODEL NUMBER | BASE FINISH | SHELL COLOR |
|--------------|---|---|
| | Options for metal finish: BL = Black Powder Coat BRS = Brass +\$115 | Options for plastic shell: GGRN = Green BL = Black GWHT = White SPNK = Sweet Pink |
| | | |

HGG217-041.Base.ShellColor Example: HGG217-041.BRS.GGRN



| | List Prices | | Sq.Ft. | Yards | Dimensions |
|--|-------------|--|--------|-------|------------|
|--|-------------|--|--------|-------|------------|

Gubi® Beetle HGG217-051



| | | | | | | | | | | |
|---------|------|---------|------|-------------|------|---|---|----|-----|-----|
| COM/COL | 1435 | Grade G | 1460 | Leather I | 1560 | 9 | ½ | OH | 42½ | AH |
| Grade A | 1420 | Grade H | 1465 | Leather II | 1600 | | | OW | 22¼ | WBA |
| Grade B | 1430 | Grade J | 1470 | Leather III | 1640 | | | OD | 21½ | DED |
| Grade C | 1435 | Grade K | 1485 | Leather IV | 1680 | | | SH | 28 | DEW |
| Grade D | 1440 | Grade L | 1500 | Leather V | 1720 | | | SD | 17¾ | R |
| Grade E | 1445 | Grade M | 1520 | Leather VI | 1760 | | | | | |
| Grade F | 1450 | | | | | | | | | |

Shipping Weight
Cube

Upholstery Requires:
Fabric: ½ Yard
Leather: 9 Square Feet

Counter Stool | Plastic Back | Upholstered Seat | Metal Base

Product rated at 225 lbs.

Indoor Advantage™ Certified

Discontinued

PLEASE SPECIFY THE FOLLOWING TO ORDER:

| MODEL NUMBER | TEXTILES | FLAMMABILITY | BASE FINISH | SHELL COLOR |
|--------------|--|---|---|---|
| | Indicate fabric choice for seat: <i>See options for fabrics at www.hbftextiles.com</i> | Indicate flammability: U = Cal 117 | Options for metal finish: BL = Black Powder Coat BRS = Brass +\$115 | Options for plastic shell: GGRN = Green BL = Black GWHT = White SPNK = Sweet Pink |
| | | | | |

HGG217-051.Fabric.Flammability.Base.ShellColor Example: HGG217-051.300-18.U.BRS.GGRN



Dimensions

Gubi® Beetle HGG217-061



| | | |
|----|-----|-----|
| OH | 42½ | AH |
| OW | 22¼ | WBA |
| OD | 21½ | DED |
| SH | 28 | DEW |
| SD | 16¾ | R |

Shipping Weight
Cube

Counter Stool | Plastic Shell | Upholstered Seat and Inside Back | Metal Base

Product rated at 225 lbs.

Indoor Advantage™ certified

Pricing for Single Fabric Placement:

Pricing for Multiple Fabric Placement:
(To Calculate, Begin with Base Price and add Upcharges)

Base Price: 1610

Upholstery:

| | |
|-------------|------|
| COM/COL | 1695 |
| Grade A | 1665 |
| Grade B | 1685 |
| Grade C | 1695 |
| Grade D | 1705 |
| Grade E | 1715 |
| Grade F | 1725 |
| Grade G | 1745 |
| Grade H | 1755 |
| Grade J | 1765 |
| Grade K | 1795 |
| Grade L | 1825 |
| Grade M | 1865 |
| Leather I | 1945 |
| Leather II | 2025 |
| Leather III | 2105 |
| Leather IV | 2185 |
| Leather V | 2265 |
| Leather VI | 2345 |

Back Upholstery:

| | |
|-------------|-----|
| COM/COL | 20 |
| Grade A | 5 |
| Grade B | 15 |
| Grade C | 20 |
| Grade D | 25 |
| Grade E | 30 |
| Grade F | 35 |
| Grade G | 45 |
| Grade H | 50 |
| Grade J | 55 |
| Grade K | 70 |
| Grade L | 85 |
| Grade M | 105 |
| Leather I | 145 |
| Leather II | 185 |
| Leather III | 225 |
| Leather IV | 265 |
| Leather V | 305 |
| Leather VI | 345 |

Seat Upholstery:

| | |
|-------------|-----|
| COM/COL | 20 |
| Grade A | 5 |
| Grade B | 15 |
| Grade C | 20 |
| Grade D | 25 |
| Grade E | 30 |
| Grade F | 35 |
| Grade G | 45 |
| Grade H | 50 |
| Grade J | 55 |
| Grade K | 70 |
| Grade L | 85 |
| Grade M | 105 |
| Leather I | 145 |
| Leather II | 185 |
| Leather III | 225 |
| Leather IV | 265 |
| Leather V | 305 |
| Leather VI | 345 |

Upholstery Requires:

Fabric: 1 Yard
Leather: 18 Sq. Ft.

Upholstery Requires (Per Application):

Fabric: ½ Yard
Leather: 9 Sq. Ft.

Upholstery Requires (Per Application):

Fabric: ½ Yard
Leather: 9 Sq. Ft.

Total Required

Upholstery: Fabric: 1 Yard
Leather: 18 Sq. Ft.

PLEASE SPECIFY THE FOLLOWING TO ORDER:

MODEL NUMBER

TEXTILES: BACK

Indicate fabric choice for back:

See options for fabrics at www.hbf textiles.com

TEXTILES: SEAT

Indicate fabric choice for seat:

See options for fabrics at www.hbf textiles.com

FLAMMABILITY

Indicate flammability:

U = Cal 117

BASE FINISH

Options for metal finish:

BL = Black Powder Coat
BRS = Brass +\$115

SHELL COLOR

Options for plastic shell:

GGRN = Green
BL = Black
GWHT = White
SPNK = Sweet Pink

HGG217-061.FabricBack.FabricSeat.Flammability.Base.ShellColor

Example: HGG217-061.300-18.300-18.U.BRS.GGRN



List Price

Dimensions

Gubi® Beetle HGG217-071

1180



OH 46½ AH
OW 22¼ WBA
OD 21½ DED
SH 31 DEW
SD 17¾ R

Shipping Weight
Cube

Barstool | Plastic Shell | Metal Base

Product rated at 225 lbs.

Indoor Advantage™ certified

Discontinued

PLEASE SPECIFY THE FOLLOWING TO ORDER:

| MODEL NUMBER | BASE FINISH | SHELL COLOR |
|--------------|---|---|
| | Options for metal finish: BL = Black Powder Coat BRS = Brass +\$140 | Options for plastic shell: GGRN = Green BL = Black GWHT = White SPNK = Sweet Pink |
| | | |

HGG217-071.Base.ShellColor Example: HGG217-071.BRS.GGRN



| | List Prices | | Sq.Ft. | Yards | Dimensions |
|--|-------------|--|--------|-------|------------|
|--|-------------|--|--------|-------|------------|

Gubi® Beetle HGG217-081



| | | | | | | | | | | |
|---------|------|---------|------|-------------|------|---|---|----|-----|-----|
| COM/COL | 1490 | Grade G | 1515 | Leather I | 1615 | 9 | ½ | OH | 46½ | AH |
| Grade A | 1475 | Grade H | 1520 | Leather II | 1655 | | | OW | 22¼ | WBA |
| Grade B | 1485 | Grade J | 1525 | Leather III | 1695 | | | OD | 21½ | DED |
| Grade C | 1490 | Grade K | 1540 | Leather IV | 1735 | | | SH | 32 | DEW |
| Grade D | 1495 | Grade L | 1555 | Leather V | 1775 | | | SD | 17¾ | R |
| Grade E | 1500 | Grade M | 1575 | Leather VI | 1815 | | | | | |
| Grade F | 1505 | | | | | | | | | |

Shipping Weight
Cube

Upholstery Requires:

Fabric: ½ Yard

Leather: 9 Square Feet

Barstool | Plastic Back | Upholstered Seat | Metal Base

Product rated at 225 lbs.

Indoor Advantage™ certified

Discontinued

PLEASE SPECIFY THE FOLLOWING TO ORDER:

| MODEL NUMBER | TEXTILES | FLAMMABILITY | BASE FINISH | SHELL COLOR |
|--------------|--|---|---|---|
| | Indicate fabric choice for seat: <i>See options for fabrics at www.hbftextiles.com</i> | Indicate flammability: U = Cal 117 | Options for metal finish: BL = Black Powder Coat BRS = Brass +\$140 | Options for plastic shell: GGRN = Green BL = Black GWHT = White SPNK = Sweet Pink |

HGG217-081.FabricSeat.Flammability.Base.ShellColor Example: HGG217-081.300-18.U.BRS.GGRN



Dimensions

Gubi® Beetle HGG217-091



| | | |
|----|-----|-----|
| OH | 46½ | AH |
| OW | 22¼ | WBA |
| OD | 21½ | DED |
| SH | 32 | DEW |
| SD | 16¾ | R |

Shipping Weight
Cube

Barstool | Plastic Shell | Upholstered Seat and Inside Back | Metal Base

Product rated at 225 lbs.

Indoor Advantage™ certified

Pricing for Single Fabric Placement:

Pricing for Multiple Fabric Placement:
(To Calculate, Begin with Base Price and add Upcharges)

Base Price: 1720

Upholstery:

| | |
|-------------|------|
| COM/COL | 1760 |
| Grade A | 1730 |
| Grade B | 1750 |
| Grade C | 1760 |
| Grade D | 1770 |
| Grade E | 1780 |
| Grade F | 1790 |
| Grade G | 1810 |
| Grade H | 1820 |
| Grade J | 1830 |
| Grade K | 1860 |
| Grade L | 1890 |
| Grade M | 1930 |
| Leather I | 2010 |
| Leather II | 2090 |
| Leather III | 2170 |
| Leather IV | 2250 |
| Leather V | 2330 |
| Leather VI | 2410 |

Back Upholstery:

| | |
|-------------|-----|
| COM/COL | 20 |
| Grade A | 5 |
| Grade B | 15 |
| Grade C | 20 |
| Grade D | 25 |
| Grade E | 30 |
| Grade F | 35 |
| Grade G | 45 |
| Grade H | 50 |
| Grade J | 55 |
| Grade K | 70 |
| Grade L | 85 |
| Grade M | 105 |
| Leather I | 145 |
| Leather II | 185 |
| Leather III | 225 |
| Leather IV | 265 |
| Leather V | 305 |
| Leather VI | 345 |

Seat Upholstery:

| | |
|-------------|-----|
| COM/COL | 20 |
| Grade A | 5 |
| Grade B | 15 |
| Grade C | 20 |
| Grade D | 25 |
| Grade E | 30 |
| Grade F | 35 |
| Grade G | 45 |
| Grade H | 50 |
| Grade J | 55 |
| Grade K | 70 |
| Grade L | 85 |
| Grade M | 105 |
| Leather I | 145 |
| Leather II | 185 |
| Leather III | 225 |
| Leather IV | 265 |
| Leather V | 305 |
| Leather VI | 345 |

Upholstery Requires:

Fabric: 1 Yard
Leather: 18 Sq. Ft.

Upholstery Requires (Per Application):

Fabric: ½ Yard
Leather: 9 Sq. Ft.

Upholstery Requires (Per Application):

Fabric: ½ Yard
Leather: 9 Sq. Ft.

Total Required

Upholstery: Fabric: 1 Yard
Leather: 18 Sq. Ft.

PLEASE SPECIFY THE FOLLOWING TO ORDER:

| | | | | | |
|----------------------------|--|--|--|---|---|
| <p>MODEL NUMBER</p> | <p>TEXTILES: BACK</p> <p>Indicate fabric choice for back:</p> <p><i>See options for fabrics at www.hbftextiles.com</i></p> | <p>TEXTILES: SEAT</p> <p>Indicate fabric choice for seat:</p> <p><i>See options for fabrics at www.hbftextiles.com</i></p> | <p>FLAMMABILITY</p> <p>Indicate flammability:</p> <p>U = Cal 117</p> | <p>BASE FINISH</p> <p>Options for metal finish:</p> <p>BL = Black Powder Coat BRS = Brass +\$140</p> | <p>SHELL COLOR</p> <p>Options for plastic shell:</p> <p>GGRN = Green BL = Black GWHT = White SPNK = Sweet Pink</p> |
|----------------------------|--|--|--|---|---|

HGG217-091.FabricSeat.FabricBack.Flammability.Base.ShellColor

Example: HGG217-091.300-18.300-18.U.BRS.GGRN



Jueki Specifications

| | |
|---------------------|---|
| Overview | Sculpted Wood Seat Three Heights available: 18", 24", 30" |
| Wood Options | Frame available in Ash. Refer to HBF Ash finishes for color selection. |
| Ring Options | Black Powder Coat Light Grey Powder Coat White Powder Coat Polished Chrome |



List Price

Dimensions

Jueki HGR120-011



1985

OH 18 AH
OW 16 5/8 WBA
OD 13 3/8 DED
SH 18 DEW
SD 12 3/4 R

Shipping Weight 16
Cube 8.2

Low Stool | Ash

ANSI/BIFMA LEVEL® Furniture Sustainability Standard certified
Indoor Advantage™ certified

PLEASE SPECIFY THE FOLLOWING TO ORDER:

MODEL NUMBER

SPECIES & FINISH

Options for wood finishes:
AH = Ash

- 310 = Smoke Opaque
- 400 = Clear
- 402 = Black Opaque
- 403 = Grey Opaque
- 404 = Warm White Opaque
- 405 = Mist Opaque
- 406 = Denim Opaque
- 407 = Pewter Opaque
- 408 = Peppercorn Opaque
- 901 = Amber
- 902 = Designer White Opaque
- 911 = Warm Brick
- 929 = Nutmeg
- 937 = Bark
- 984 = Dark Roast
- 993 = Sumatra

HGR120-011.Wood Example: HGR120-011.AH400



List Price

Dimensions

Jueki HGR120-021



2210

OH 24 AH
OW 18 WBA
OD 14 DED
SH 24 DEW
SD 12¾ R

Shipping Weight 20
Cube 8.2

Counter Stool | Ash | Black Powder Coat Ring

ANSI/BIFMA LEVEL® Furniture Sustainability Standard certified
Indoor Advantage™ certified

PLEASE SPECIFY THE FOLLOWING TO ORDER:

| MODEL NUMBER | SPECIES & FINISH | RING FINISH |
|--------------|--|------------------------------|
| | Options for wood finishes: AH = Ash | Options for metal: |
| | 310 = Smoke Opaque | BL = Black Powder Coat |
| | 400 = Clear | WI = White Powder Coat |
| | 402 = Black Opaque | LG = Light Grey Powder Coat |
| | 403 = Grey Opaque | POL = Polished Chrome +\$100 |
| | 404 = Warm White Opaque | |
| | 405 = Mist Opaque | |
| | 406 = Denim Opaque | |
| | 407 = Pewter Opaque | |
| | 408 = Peppercorn Opaque | |
| | 901 = Amber | |
| | 902 = Designer White Opaque | |
| | 911 = Warm Brick | |
| | 929 = Nutmeg | |
| | 937 = Bark | |
| | 984 = Dark Roast | |
| | 993 = Sumatra | |

HGR120-021.Wood.Ring Example: HGR120-021.AH400.LG



List Price

Dimensions

Jueki HGR120-031



2435

OH 30 AH
OW 18 WBA
OD 14 3/8 DED
SH 30 DEW
SD 12 3/4 R

Shipping Weight 25
Cube 24.4

Barstool | Ash | Black Powder Coat Ring

PLEASE SPECIFY THE FOLLOWING TO ORDER: _____

| MODEL NUMBER | SPECIES & FINISH | RING FINISH |
|--------------|--|------------------------------|
| | Options for wood finishes: AH = Ash | Options for metal: |
| | 310 = Smoke Opaque | BL = Black Powder Coat |
| | 400 = Clear | WI = White Powder Coat |
| | 402 = Black Opaque | LG = Light Grey Powder Coat |
| | 403 = Grey Opaque | POL = Polished Chrome +\$100 |
| | 404 = Warm White Opaque | |
| | 405 = Mist Opaque | |
| | 406 = Denim Opaque | |
| | 407 = Pewter Opaque | |
| | 408 = Peppercorn Opaque | |
| | 901 = Amber | |
| | 902 = Designer White Opaque | |
| | 911 = Warm Brick | |
| | 929 = Nutmeg | |
| | 937 = Bark | |
| | 984 = Dark Roast | |
| | 993 = Sumatra | |

HGR120-031.Wood.Ring Example: HGR120-031.AH400.LG