

UNIVERSAL CONFERENCE TABLES
LIST PRICES EFFECTIVE
FEBRUARY 1, 2024

UNIVERSAL
CONFERENCE
TABLES



2 0 2 4



Conference Table Finish Options + GSA Information

Veneer and Finishes

Wood owes its inherent beauty to variations in color, grain, and texture; therefore, these variations are not considered defects. Due to the natural color and grain variances of wood the final finish color, texture and grain may vary from one furniture piece to another even though they are finished at the same time. Exposure to light and the aging process will cause changes in surface color of natural wood products. Light finishes on wood products do not mask the natural characteristics of wood. HBF does not guarantee the exact matching of grain, pattern and color.

An upcharge of **10% Net** per unit for conference tables, with a minimum upcharge of **\$500 Net** per order, will apply for any custom wood finish.

Refer to the following page for product material options.

GSA/Federal Contract Information:

GSA Contract Number 47QSMA22D08P9

Model numbers identified with the following verbiage “When purchased separately without a configurable TAA compliant end product, not on GSA contract” is to mean that these configurable parts or components:

- Have no functionality or capability without being integrated into an end product; and
- Are considered **Open Market** if purchased without a configurable TAA compliant end product.

ASH: (AH) FINISHES



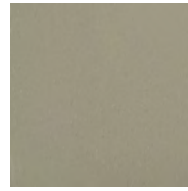
AH310
Smoke Opaque



AH400
Clear



AH402
Black Opaque



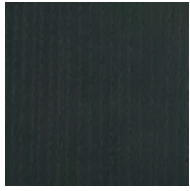
AH403
Grey Opaque



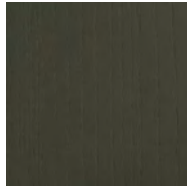
AH404
Warm White Opaque



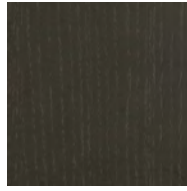
AH405
Mist Opaque



AH406
Denim Opaque



AH407
Pewter Opaque



AH408
Peppercorn Opaque



AH901
Amber



AH902
Designer White Opaque



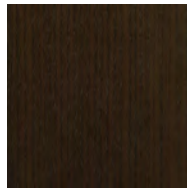
AH911
Warm Brick



AH929
Nutmeg



AH937
Bark



AH984
Dark Roast

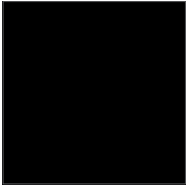


AH993
Sumatra

Screen images are intended as a guide only and should not be regarded as absolutely correct.
For exact color/texture, please visit www.hbf.com to request an actual sample.



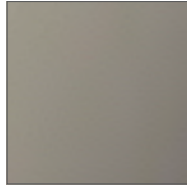
POWDER COATS:



BL
Black



WI
White



LG
Light Grey

METAL:



PAL
Polished Aluminum

SOLID SURFACE:



SDW1
Designer White

Screen images are intended as a guide only and should not be regarded as absolutely correct.
For exact color/texture, please visit www.hbf.com to request an actual sample.



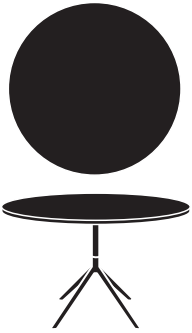
OPTION OVERVIEW

HEIGHT	Low Conference Conference
TOP SHAPES	Round Square Soft Square
TOP MATERIAL	Ash Veneer Solid Surface
BASE	Metal - Powder Coat Polished Aluminum
COLUMN	Tubular Metal - Specified Apart from Base Finish





Model	Dimensions OH	Diameter	List Price	Ash	Solid Surface	Column Finish Powder Coat	Base Finish Powder Coat	Polished Aluminum
ROUND TOP HTB51701R-2636	26	36	2,815	\$0	+\$1000	\$0	\$0	+\$75



HTB51701R-2636

PLEASE SPECIFY THE FOLLOWING TO ORDER:

MODEL NUMBER	TOP MATERIALS FINISH	METAL FINISH: BASE	METAL FINISH: COLUMN
	<p>Options for wood finishes: AH = Ash</p> <ul style="list-style-type: none"> <input type="checkbox"/> 310 = Smoke Opaque <input type="checkbox"/> 400 = Clear <input type="checkbox"/> 402 = Black Opaque <input type="checkbox"/> 403 = Grey Opaque <input type="checkbox"/> 404 = Warm White Opaque <input type="checkbox"/> 405 = Mist Opaque <input type="checkbox"/> 406 = Denim Opaque <input type="checkbox"/> 407 = Pewter Opaque <input type="checkbox"/> 408 = Peppercorn Opaque <input type="checkbox"/> 901 = Amber <input type="checkbox"/> 902 = Designer White Opaque <input type="checkbox"/> 911 = Warm Brick <input type="checkbox"/> 929 = Nutmeg <input type="checkbox"/> 937 = Bark <input type="checkbox"/> 984 = Dark Roast <input type="checkbox"/> 993 = Sumatra <p>Options for solid surfaces</p> <ul style="list-style-type: none"> <input type="checkbox"/> DW1 = Designer White 	<p>Options for metal:</p> <ul style="list-style-type: none"> <input type="checkbox"/> BL = Black Powder Coat <input type="checkbox"/> WI = White Powder Coat <input type="checkbox"/> LG = Grey Powder Coat <input type="checkbox"/> PAL = Polished Aluminum 	<p>Options for metal:</p> <ul style="list-style-type: none"> <input type="checkbox"/> BL = Black Powder Coat <input type="checkbox"/> WI = White Powder Coat <input type="checkbox"/> LG = Grey Powder Coat

Example Order String: HTB51701R-2636.AH400.BL.BL



Model	Dimensions OH OW OD	List Price	Finish Options				
			Ash	Solid Surface	Column Finish Powder Coat	Base Finish Powder Coat	Polished Aluminum
SQUARE TOP HTB51701S-2636	26 36 36	2,815	\$0	+\$1050	\$0	\$0	+\$75



HTB51701S-2636

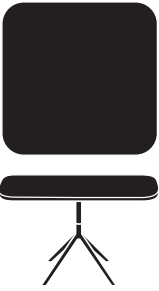
PLEASE SPECIFY THE FOLLOWING TO ORDER:

MODEL NUMBER	TOP MATERIALS FINISH	METAL FINISH: BASE	METAL FINISH: COLUMN
	<p>Options for wood finishes: AH = Ash</p> <ul style="list-style-type: none"> <input type="checkbox"/> 310 = Smoke Opaque <input type="checkbox"/> 400 = Clear <input type="checkbox"/> 402 = Black Opaque <input type="checkbox"/> 403 = Grey Opaque <input type="checkbox"/> 404 = Warm White Opaque <input type="checkbox"/> 405 = Mist Opaque <input type="checkbox"/> 406 = Denim Opaque <input type="checkbox"/> 407 = Pewter Opaque <input type="checkbox"/> 408 = Peppercorn Opaque <input type="checkbox"/> 901 = Amber <input type="checkbox"/> 902 = Designer White Opaque <input type="checkbox"/> 911 = Warm Brick <input type="checkbox"/> 929 = Nutmeg <input type="checkbox"/> 937 = Bark <input type="checkbox"/> 984 = Dark Roast <input type="checkbox"/> 993 = Sumatra <p>Options for solid surfaces</p> <ul style="list-style-type: none"> <input type="checkbox"/> DW1 = Designer White 	<p>Options for metal:</p> <ul style="list-style-type: none"> <input type="checkbox"/> BL = Black Powder Coat <input type="checkbox"/> WI = White Powder Coat <input type="checkbox"/> LG = Grey Powder Coat <input type="checkbox"/> PAL = Polished Aluminum 	<p>Options for metal:</p> <ul style="list-style-type: none"> <input type="checkbox"/> BL = Black Powder Coat <input type="checkbox"/> WI = White Powder Coat <input type="checkbox"/> LG = Grey Powder Coat

Example Order String: HTB51701S-2636.AH400.BL.BL



Model	Dimensions			List Price					
	OH	OW	OD		Ash	Solid Surface	Column Finish Powder Coat	Base Finish Powder Coat	Polished Aluminum
SOFT SQUARE HTB51701Q-2636	26	36	36	2,845	\$0	+\$1225	\$0	\$0	+\$75



HTB51701Q-2636

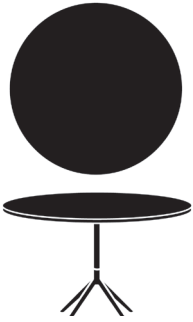
PLEASE SPECIFY THE FOLLOWING TO ORDER:

MODEL NUMBER	TOP MATERIALS FINISH	METAL FINISH: BASE	METAL FINISH: COLUMN
	<p>Options for wood finishes: AH = Ash</p> <ul style="list-style-type: none"> <input type="checkbox"/> 310 = Smoke Opaque <input type="checkbox"/> 400 = Clear <input type="checkbox"/> 402 = Black Opaque <input type="checkbox"/> 403 = Grey Opaque <input type="checkbox"/> 404 = Warm White Opaque <input type="checkbox"/> 405 = Mist Opaque <input type="checkbox"/> 406 = Denim Opaque <input type="checkbox"/> 407 = Pewter Opaque <input type="checkbox"/> 408 = Peppercorn Opaque <input type="checkbox"/> 901 = Amber <input type="checkbox"/> 902 = Designer White Opaque <input type="checkbox"/> 911 = Warm Brick <input type="checkbox"/> 929 = Nutmeg <input type="checkbox"/> 937 = Bark <input type="checkbox"/> 984 = Dark Roast <input type="checkbox"/> 993 = Sumatra <p>Options for solid surfaces</p> <ul style="list-style-type: none"> <input type="checkbox"/> DW1 = Designer White 	<p>Options for metal:</p> <ul style="list-style-type: none"> <input type="checkbox"/> BL = Black Powder Coat <input type="checkbox"/> WI = White Powder Coat <input type="checkbox"/> LG = Grey Powder Coat <input type="checkbox"/> PAL = Polished Aluminum 	<p>Options for metal:</p> <ul style="list-style-type: none"> <input type="checkbox"/> BL = Black Powder Coat <input type="checkbox"/> WI = White Powder Coat <input type="checkbox"/> LG = Grey Powder Coat

Example Order String: HTB51701Q-2636.AH400.BL.BL



Model	Dimensions OH	Diameter	List Price	Ash	Solid Surface	Column Finish Powder Coat	Base Finish Powder Coat	Polished Aluminum
ROUND TOP HTB51701R-3036	30	36	2,880	\$0	+\$1000	\$0	\$0	+\$75



HTB51701R-3036

PLEASE SPECIFY THE FOLLOWING TO ORDER:

MODEL NUMBER	TOP MATERIALS FINISH	METAL FINISH: BASE	METAL FINISH: COLUMN
	<p>Options for wood finishes: AH = Ash</p> <ul style="list-style-type: none"> <input type="checkbox"/> 310 = Smoke Opaque <input type="checkbox"/> 400 = Clear <input type="checkbox"/> 402 = Black Opaque <input type="checkbox"/> 403 = Grey Opaque <input type="checkbox"/> 404 = Warm White Opaque <input type="checkbox"/> 405 = Mist Opaque <input type="checkbox"/> 406 = Denim Opaque <input type="checkbox"/> 407 = Pewter Opaque <input type="checkbox"/> 408 = Peppercorn Opaque <input type="checkbox"/> 901 = Amber <input type="checkbox"/> 902 = Designer White Opaque <input type="checkbox"/> 911 = Warm Brick <input type="checkbox"/> 929 = Nutmeg <input type="checkbox"/> 937 = Bark <input type="checkbox"/> 984 = Dark Roast <input type="checkbox"/> 993 = Sumatra <p>Options for solid surfaces</p> <ul style="list-style-type: none"> <input type="checkbox"/> DW1 = Designer White 	<p>Options for metal:</p> <ul style="list-style-type: none"> <input type="checkbox"/> BL = Black Powder Coat <input type="checkbox"/> WI = White Powder Coat <input type="checkbox"/> LG = Grey Powder Coat <input type="checkbox"/> PAL = Polished Aluminum 	<p>Options for metal:</p> <ul style="list-style-type: none"> <input type="checkbox"/> BL = Black Powder Coat <input type="checkbox"/> WI = White Powder Coat <input type="checkbox"/> LG = Grey Powder Coat

Example Order String: HTB51701R-3036.AH400.BL.BL



Model	Dimensions OH OW OD	List Price					
			Ash	Solid Surface	Column Finish Powder Coat	Base Finish Powder Coat	Polished Aluminum
SQUARE TOP HTB51701S-3036	30 36 36	2,880	\$0	+\$1050	\$0	\$0	+\$75



HTB51701S-3036

PLEASE SPECIFY THE FOLLOWING TO ORDER:

MODEL NUMBER	TOP MATERIALS FINISH	METAL FINISH: BASE	METAL FINISH: COLUMN
	<p>Options for wood finishes: AH = Ash</p> <ul style="list-style-type: none"> <input type="checkbox"/> 310 = Smoke Opaque <input type="checkbox"/> 400 = Clear <input type="checkbox"/> 402 = Black Opaque <input type="checkbox"/> 403 = Grey Opaque <input type="checkbox"/> 404 = Warm White Opaque <input type="checkbox"/> 405 = Mist Opaque <input type="checkbox"/> 406 = Denim Opaque <input type="checkbox"/> 407 = Pewter Opaque <input type="checkbox"/> 408 = Peppercorn Opaque <input type="checkbox"/> 901 = Amber <input type="checkbox"/> 902 = Designer White Opaque <input type="checkbox"/> 911 = Warm Brick <input type="checkbox"/> 929 = Nutmeg <input type="checkbox"/> 937 = Bark <input type="checkbox"/> 984 = Dark Roast <input type="checkbox"/> 993 = Sumatra <p>Options for solid surfaces</p> <ul style="list-style-type: none"> <input type="checkbox"/> DW1 = Designer White 	<p>Options for metal:</p> <ul style="list-style-type: none"> <input type="checkbox"/> BL = Black Powder Coat <input type="checkbox"/> WI = White Powder Coat <input type="checkbox"/> LG = Grey Powder Coat <input type="checkbox"/> PAL = Polished Aluminum 	<p>Options for metal:</p> <ul style="list-style-type: none"> <input type="checkbox"/> BL = Black Powder Coat <input type="checkbox"/> WI = White Powder Coat <input type="checkbox"/> LG = Grey Powder Coat

Example Order String: HTB51701S-3036.AH400.BL.BL



Model	Dimensions			List Price					
	OH	OW	OD		Ash	Solid Surface	Column Finish Powder Coat	Base Finish Powder Coat	Polished Aluminum
SOFT SQUARE HTB51701Q-3036	30	36	36	2,905	\$0	+\$1225	\$0	\$0	+\$75



HTB51701Q-3036

PLEASE SPECIFY THE FOLLOWING TO ORDER:

MODEL NUMBER	TOP MATERIALS FINISH	METAL FINISH: BASE	METAL FINISH: COLUMN
	<p>Options for wood finishes: AH = Ash</p> <ul style="list-style-type: none"> <input type="checkbox"/> 310 = Smoke Opaque <input type="checkbox"/> 400 = Clear <input type="checkbox"/> 402 = Black Opaque <input type="checkbox"/> 403 = Grey Opaque <input type="checkbox"/> 404 = Warm White Opaque <input type="checkbox"/> 405 = Mist Opaque <input type="checkbox"/> 406 = Denim Opaque <input type="checkbox"/> 407 = Pewter Opaque <input type="checkbox"/> 408 = Peppercorn Opaque <input type="checkbox"/> 901 = Amber <input type="checkbox"/> 902 = Designer White Opaque <input type="checkbox"/> 911 = Warm Brick <input type="checkbox"/> 929 = Nutmeg <input type="checkbox"/> 937 = Bark <input type="checkbox"/> 984 = Dark Roast <input type="checkbox"/> 993 = Sumatra <p>Options for solid surfaces</p> <ul style="list-style-type: none"> <input type="checkbox"/> DW1 = Designer White 	<p>Options for metal:</p> <ul style="list-style-type: none"> <input type="checkbox"/> BL = Black Powder Coat <input type="checkbox"/> WI = White Powder Coat <input type="checkbox"/> LG = Grey Powder Coat <input type="checkbox"/> PAL = Polished Aluminum 	<p>Options for metal:</p> <ul style="list-style-type: none"> <input type="checkbox"/> BL = Black Powder Coat <input type="checkbox"/> WI = White Powder Coat <input type="checkbox"/> LG = Grey Powder Coat

Example Order String: HTB51701Q-3042.AH400.BL.BL