

AMI
CONFERENCE
TABLES





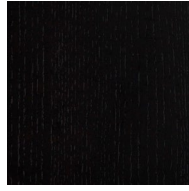
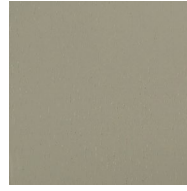
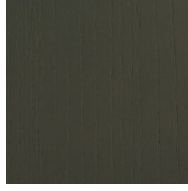
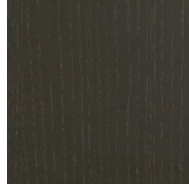
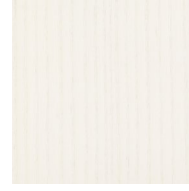
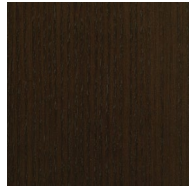
Conference Table Finish Options

Veneer and Finishes

Wood owes its inherent beauty to variations in color, grain, and texture; therefore, these variations are not considered defects. Due to the natural color and grain variances of wood the final finish color, texture and grain may vary from one furniture piece to another even though they are finished at the same time. Exposure to light and the aging process will cause changes in surface color of natural wood products. Light finishes on wood products do not mask the natural characteristics of wood. HBF does not guarantee the exact matching of grain, pattern and color.

An upcharge of **10% Net** per unit for conference tables, with a minimum upcharge of **\$500 Net** per order, will apply for any custom wood finish.

Refer to the following page for product material options.

ASH: (AH) FINISHESAH310
Smoke OpaqueAH400
ClearAH402
Black OpaqueAH403
Grey OpaqueAH404
Warm White OpaqueAH405
Mist OpaqueAH406
Denim OpaqueAH407
Pewter OpaqueAH408
Peppercorn OpaqueAH901
AmberAH902
Designer White OpaqueAH911
Warm BrickAH929
NutmegAH937
BarkAH984
Dark RoastAH993
Sumatra

Screen images are intended as a guide only and should not be regarded as absolutely correct.
For exact color/texture, please visit www.hbf.com to request an actual sample.

OPTION OVERVIEW

HEIGHT	Low Conference Conference
TOP SHAPE	Round Racetrack
WOOD	Solid Ash
POWER	Available

Note: Cover finish can be a separate finish than table. See available finish options on page 3.



Ami Power Detail - Closed



*powerSpin Detail - Leather Cover
HVA81902-114*



*Ami Racetrack Table Power Unit
72" and 84" long table's power is centered with 2 opposing flip up units with 2 standard plugs and 2 USB plugs each. 90" long table has 4 total units, 2 at each end*



*Ami Power Detail - Open
Spins up 180° in center of table
Power on round tables has one center power hub with four units, each with one standard plug and two USB ports.
Finish shown: AH984 Dark Roast*



*powerSpin Detail - Wood Cover
HVA81901-114*

Ami Racetrack Alternating Power Unit has a cord length of 10' (120"), and after managed down one leg, approximately 4' (48") of cord to reach a wall or floor outlet.

powerSpin Unit has a cord length of 6' (72"), and after managed down one leg, approximately 3' (36") of cord to reach a wall or floor outlet.



Round | No Power



Round | With Power Capability



Racetrack | No Power



Racetrack | With Power Capability



	Model	Dimensions OH	Diameter	List Price
ROUND TOP	HTB61701R-2848	28	48	8,095
NO POWER	HTB61901R-2854	28	54	9,510
	HTB61701R-2860	28	60	10,925
	HTB61701R-2872	28	72	13,745



PLEASE SPECIFY THE FOLLOWING TO ORDER: _____

MODEL NUMBER	SPECIES & FINISH
	Options for wood finishes: AH = Ash
	310 = Smoke Opaque
	400 = Clear
	402 = Black Opaque
	403 = Grey Opaque
	404 = Warm White Opaque
	405 = Mist Opaque
	406 = Denim Opaque
	407 = Pewter Opaque
	408 = Peppercorn Opaque
	902 = Designer White Opaque
	901 = Amber
	911 = Warm Brick
	929 = Nutmeg
	937 = Bark
	984 = Dark Roast
	993 = Sumatra

Example Order String: HTB61701R-2872.AH400



	Model	Dimensions OH	Diameter	List Price
ROUND TOP	HTB61902R-2854	28	54	9,825
WITH POWER	HTB61702R-2860	28	60	11,235
CAPABILITY	HTB61702R-2872	28	72	14,065



Note: Power must be ordered separately. (see pages 13-14 for power options.)

PLEASE SPECIFY THE FOLLOWING TO ORDER:

MODEL NUMBER	SPECIES & FINISH	POWER COVER
	Options for wood finishes: AH = Ash	NA = Not Applicable <i>(Power must now be ordered separately)</i>
	310 = Smoke Opaque	
	400 = Clear	
	402 = Black Opaque	
	403 = Grey Opaque	
	404 = Warm White Opaque	
	405 = Mist Opaque	
	406 = Denim Opaque	
	407 = Pewter Opaque	
	408 = Peppercorn Opaque	
	902 = Designer White Opaque	
	901 = Amber	
	911 = Warm Brick	
	929 = Nutmeg	
	937 = Bark	
	984 = Dark Roast	
	993 = Sumatra	

Example Order String: HTB61702R-2872.AH400.NA



	Model	Dimensions			List Price
		OH	OD	OW	
RACETRACK TOP	HTB61701N-284272	28	42	72	7,540
NO POWER	HTB61701N-284284	28	42	84	8,800
	HTB61701N-284890	28	48	90	10,060



PLEASE SPECIFY THE FOLLOWING TO ORDER:

MODEL NUMBER

SPECIES & FINISH

Options for wood finishes: AH = Ash

- 310 = Smoke Opaque
- 400 = Clear
- 402 = Black Opaque
- 403 = Grey Opaque
- 404 = Warm White Opaque
- 405 = Mist Opaque
- 406 = Denim Opaque
- 407 = Pewter Opaque
- 408 = Peppercorn Opaque
- 902 = Designer White Opaque
- 901 = Amber
- 911 = Warm Brick
- 929 = Nutmeg
- 937 = Bark
- 984 = Dark Roast
- 993 = Sumatra

Example Order String: HTB61701N-284272.AH400



	Model	Dimensions			List Price
		OH	OD	OW	
RACETRACK TOP	HTB61702N-284272	28	42	72	9,795
WITH POWER	HTB61702N-284284	28	42	84	11,050
	HTB61702N-284890	28	48	90	12,305



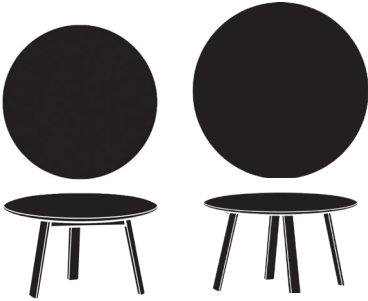
PLEASE SPECIFY THE FOLLOWING TO ORDER: _____

MODEL NUMBER	SPECIES & FINISH
	Options for wood finishes: AH = Ash
	310 = Smoke Opaque
	400 = Clear
	402 = Black Opaque
	403 = Grey Opaque
	404 = Warm White Opaque
	405 = Mist Opaque
	406 = Denim Opaque
	407 = Pewter Opaque
	408 = Peppercorn Opaque
	902 = Designer White Opaque
	901 = Amber
	911 = Warm Brick
	929 = Nutmeg
	937 = Bark
	984 = Dark Roast
	993 = Sumatra

Example Order String: HTB61702N-284272.AH400



	Model	Dimensions OH	Diameter	List Price
ROUND TOP	HTB61701R-3036	30	36	5,655
NO POWER	HTB61701R-3042	30	42	7,060
	HTB61701R-3048	30	48	8,470
	HTB61901R-3054	30	54	9,895
	HTB61701R-3060	30	60	11,305
	HTB61701R-3072	30	72	14,130



HTB61701R-3036
HTB61701R-3042

HTB61701R-3048
HTB61901R-3054
HTB61701R-3060
HTB61701R-3072

PLEASE SPECIFY THE FOLLOWING TO ORDER: _____

MODEL NUMBER	SPECIES & FINISH
	Options for wood finishes: AH = Ash
	310 = Smoke Opaque
	400 = Clear
	402 = Black Opaque
	403 = Grey Opaque
	404 = Warm White Opaque
	405 = Mist Opaque
	406 = Denim Opaque
	407 = Pewter Opaque
	408 = Peppercorn Opaque
	902 = Designer White Opaque
	901 = Amber
	911 = Warm Brick
	929 = Nutmeg
	937 = Bark
	984 = Dark Roast
	993 = Sumatra

Example Order String: HTB61701R-3036.AH400



	Model	Dimensions OH	Diameter	List Price
ROUND TOP	HTB61902R-3054	30	54	10,195
WITH POWER	HTB61702R-3060	30	60	11,620
CAPABILITY	HTB61702R-3072	30	72	14,440



Note: Power must be ordered separately. (see pages 13-14 for power options.)

PLEASE SPECIFY THE FOLLOWING TO ORDER:

MODEL NUMBER	SPECIES & FINISH	POWER COVER
	Options for wood finishes: AH = Ash	NA = Not Applicable <i>(Power must now be ordered separately)</i>
	310 = Smoke Opaque	
	400 = Clear	
	402 = Black Opaque	
	403 = Grey Opaque	
	404 = Warm White Opaque	
	405 = Mist Opaque	
	406 = Denim Opaque	
	407 = Pewter Opaque	
	408 = Peppercorn Opaque	
	902 = Designer White Opaque	
	901 = Amber	
	911 = Warm Brick	
	929 = Nutmeg	
	937 = Bark	
	984 = Dark Roast	
	993 = Sumatra	

Example Order String: HTB61702R-3060.AH400.NA



	Model	Dimensions			List Price
		OH	OD	OW	
RACETRACK TOP	HTB61701N-304272	30	42	72	8,175
NO POWER	HTB61701N-304284	30	42	84	9,440
	HTB61701N-304890	30	48	90	10,690



PLEASE SPECIFY THE FOLLOWING TO ORDER:

<p>MODEL NUMBER</p>	<p>SPECIES & FINISH</p> <p>Options for wood finishes: AH = Ash</p> <ul style="list-style-type: none"> 310 = Smoke Opaque 400 = Clear 402 = Black Opaque 403 = Grey Opaque 404 = Warm White Opaque 405 = Mist Opaque 406 = Denim Opaque 407 = Pewter Opaque 408 = Peppercorn Opaque 902 = Designer White Opaque 901 = Amber 911 = Warm Brick 929 = Nutmeg 937 = Bark 984 = Dark Roast 993 = Sumatra
---------------------	--

Example Order String: HTB61701N-304272.AH400



	Model	Dimensions			List Price
		OH	OD	OW	
RACETRACK TOP	HTB61702N-304272	30	42	72	10,425
WITH POWER	HTB61702N-304284	30	42	84	11,675
	HTB61702N-304890	30	48	90	12,945



PLEASE SPECIFY THE FOLLOWING TO ORDER:

MODEL NUMBER	SPECIES & FINISH
	Options for wood finishes: AH = Ash
	310 = Smoke Opaque
	400 = Clear
	402 = Black Opaque
	403 = Grey Opaque
	404 = Warm White Opaque
	405 = Mist Opaque
	406 = Denim Opaque
	407 = Pewter Opaque
	408 = Peppercorn Opaque
	902 = Designer White Opaque
	901 = Amber
	911 = Warm Brick
	929 = Nutmeg
	937 = Bark
	984 = Dark Roast
	993 = Sumatra

Example Order String: HTB61702N-304272.AH400

	Model	Description	List Price
POWER MODULES	HVA81901-114	<i>powerSpin - wood</i>	4,020



Ami Power Detail - Closed
HVA81901-114



Ami Power Detail - Open
HVA81901-114



powerSpin Detail - Wood Cover
HVA81901-114

*Spins up 180° in center of table
Power on round tables has one center
power hub with four units, each with
one standard plug and two USB ports.
Finish shown: AH984 Dark Roast*

*powerSpin Unit has a cord length of
6' (72"), and after managed down one leg,
approximately 3' (36") of cord to reach a
wall or floor outlet.*

PLEASE SPECIFY THE FOLLOWING TO ORDER:

MODEL NUMBER

SPECIES & FINISH

Options for wood finishes: AH = Ash

- 310 = Smoke Opaque
- 400 = Clear
- 402 = Black Opaque
- 403 = Grey Opaque
- 404 = Warm White Opaque
- 405 = Mist Opaque
- 406 = Denim Opaque
- 407 = Pewter Opaque
- 408 = Peppercorn Opaque
- 902 = Designer White Opaque
- 901 = Amber
- 911 = Warm Brick
- 929 = Nutmeg
- 937 = Bark
- 984 = Dark Roast
- 993 = Sumatra

Example Order String: HVA81901-114.AH400

	Model	Description	List Price
POWER MODULES	HVA81902-114	<i>powerSpin - wrapped leather</i>	4,390



*powerSpin Detail - Leather Cover
HVA81902-114*

*Spins up 180° in center of table
Power on round tables has one center
power hub with four units, each with
one standard plug and two USB ports.*

*powerSpin Unit has a cord length of
6' (72"), and after managed down one leg,
approximately 3' (36") of cord to reach a
wall or floor outlet.*

*Note: powerSpin unit can be wrapped in a contrasting or complementary shade of leather.
See available options at www.bbftextiles.com*

PLEASE SPECIFY THE FOLLOWING TO ORDER:

MODEL NUMBER	LEATHER
	<p>Indicate leather choice:</p> <p><i>See options for leathers at www.bbftextiles.com</i></p>

Example Order String: HVA81902-114.710-16