

S E A T I N G : S T O O L S
L I S T P R I C E S E F F E C T I V E
F E B R U A R Y 1 , 2 0 2 4

S T O O L S



2 0 2 4



Mailing Address: HBF PO Box 8 Hickory NC 28603-0008	Shipping Address: HBF 900 - 12th Street Drive NW Hickory NC 28601-4763	Contact: Phone: 1.855.HBF.2020 828.328.2064 Fax: 828.485.2690 Info: hbfservice@hbf.com www.hbf.com	Order Processing: Phone: 1.855.HBF.2020 828.328.2064 Fax: 828.485.2690 hbforders@hbf.com
--	---	--	---

GENERAL INFORMATION	PAGE
ANSI/BIFMA e3-2014e Furniture Sustainability.....	5
COM Ordering Requirements.....	3
Combinations of Upholstery Applications	4
Dimension Guide	5
GSA	6
HBF Textiles Graded Product	12
High Performance Products	6
Product Material Options	7
Indoor Advantage™ Gold Certified	5
Seating Ordering Procedure	2
Special Code Compliance – CAL 117.....	4
Spring Down Cushions.....	6
Veneer Options.....	6
Yardage Requirements.....	2
STOOLS	
Andaz	13
Carlyle	38
Enpointe	41
Essens	45
Gubi® Beetle.....	53
Jueki.....	59



Coverings

All upholstered items may be ordered using HBF Textiles, HBF Leathers, or coverings provided by the customer. Prices listed as COM refer to Customer's Own Material, which includes textiles and leather. Prices listed as GRADE refer to HBF Textiles and/or HBF Leather.

Yardage requirements shown in the price list are based on non-directional 54" wide material. The following conversion chart should be used to determine yardage requirements when COM textile is 54" wide or less and/or has a repeat of 2" or more. Add together the vertical and horizontal repeat to determine which column should be used as a reference.

Fabric Width	Plain Fabric	2"-10" Repeat	11"-20" Repeat	21"-25" Repeat	26"-30" Repeat	31"-35" Repeat	36"-40" Repeat	41"-45" Repeat
54"	+ 0%	+10%	+15%	+20%	+25%	+30%	+35%	+40%
51"-53"	15%	20%	25%	30%	35%	40%	45%	50%
48"-50"	30%	35%	40%	45%	50%	55%	60%	65%
45"-47"	45%	50%	55%	60%	65%	70%	75%	80%
36"-44"	60%	65%	70%	75%	80%	85%	90%	95%

To determine the possibility of reduced yardage requirements for orders of thirty (30) or more units, please contact The HBF Client Experience Team. HBF reserves the right to request additional yardage of COM at customer expense based on repeat and/or pattern size, and number of rolls.

All COM's must be approved for application before the purchase order is submitted to HBF. Please contact The HBF Client Experience Team at hbfservice@hbf.com to verify that your COM fabric has been approved. If it has not, please request COM approval testing via www.hbf.com under COM Request. Failure to submit a COM for testing may result in additional expenses or rejection of COM. For any repeat and/or pattern size not listed, please contact The HBF Client Experience Team for a yardage requirement quotation.

HBF cannot be held responsible for performance, color accuracy, or weaving of COM materials. All responsibility for COM shipments is between the purchaser and the textile/leather source. HBF reserves the right to reject any COM. HBF assumes no responsibility for suitability or wearability of COM. Difficult COM may be subject to additional charge if additional labor costs are incurred. HBF assumes no responsibility for the flame retardance of any COM. Customers are solely responsible for making sure that COM complies with all applicable codes and regulations. Orders specifying COM will not be scheduled for production until all approved COM(s) are received by HBF. To ensure proper COM expediting, please tag fabric/leather roll(s) with the following information: 1. Purchasing dealer name and purchase order number 2. HBF acknowledgment number, if available 3. Other pertinent information which will enable proper COM identification.

When sending COM leather for use on one of our upholstered pieces, please send eighteen (18) square feet of leather for each yard of 54" plain fabric required for that item.



Coverings (Continued)

COM ORDERING REQUIREMENTS:

Prior to acceptance of order specifying COM, a memo sample must be submitted to HBF for determination of suitability. All COM's must be rolled separately, on individual tubes. Multiple materials rolled on the same tube will not be accepted.

For ease of expediting your COM order, we require the following information:

- | | |
|---|------------------------------|
| 1. Material description | Shipping Address: HBF |
| 2. Material source | 900 12th Street Drive NW |
| 3. Order line, product name or number | Hickory, NC 28601-4763 |
| 4. Material color | |
| 5. A swatch of the covering | |
| 6. Special application instructions, if any | |

If COM is of a type requiring choices of seam placement, face side, position of design or repeat; these instructions must be clearly stated on the original order.

HBF cannot be held responsible for performance, color accuracy, or weaving of COM materials. All responsibility for COM shipments is between the purchaser and the textile/leather source.

HBF reserves the right to reject any COM. HBF assumes no responsibility for suitability or wearability of COM. Difficult COM may be subject to additional charge if additional labor costs are incurred.

HBF assumes no responsibility for the flame retardance of any COM. Customers are solely responsible for making sure that COM complies with all applicable codes and regulations.

Orders specifying COM will not be scheduled for production until all approved COM is received by HBF.

To ensure proper COM expediting, please tag textile/leather with the following information:

1. Purchasing dealer name and purchase order number
2. HBF acknowledgement number, if available
3. Other pertinent information which will enable proper COM identification



Combination of Upholstery Applications

All seating ordered with combination upholstery application (fabric, leather) that **is not** offered as standard is subject to a **\$103 List Upholstery upcharge** and will be entered and processed as a special model, in addition to the following pricing conditions:

1. Combinations using HBF Textiles and COM will be priced at the COM price. The cost of the portion of the HBF Textiles used, will be entered as a miscellaneous charge on the furniture order.
2. Combinations using HBF Textiles and HBF Leathers, or COM and HBF Leathers, will be priced at the appropriate Leather I-V price.
3. Combinations using two HBF Textiles will be invoiced at higher grade price.
4. When specifying combination of upholstery applications, a sketch indicating placement of textiles and direction of applications must accompany the purchase order.

Special Code Compliance

California #117-2013

Unless otherwise specified, foam used in all HBF seating products complies with these guidelines.

Boston Fire Code

New York Port Authority

Please contact the HBF Client Experience Team if compliance is required for these special codes.

**ANSI/BIFMA e3-2014e
LEVEL® Furniture
Sustainability Standard
and Certification**

A majority of HBF’s products have met the necessary qualifications to achieve LEVEL® certification. LEVEL® is the multi-attribute sustainability certification based on the ANSI/BIFMA e3 Furniture Sustainability Standard. The standard and certification were created to deliver the most open and transparent means of evaluating and communicating the environmental and social impacts of furniture products in the built environment. Taking into account a company’s social actions, energy usage, material selection and human and ecosystem health impacts, LEVEL® addresses how a product is sustainable from multiple perspectives. The organization, facilities, and products are audited on an annual basis to ensure ongoing compliance and improvement.

With LEVEL®, customers can make informed choices about sustainable commercial office furniture. The LEVEL® mark identifies that a product has been vetted by an independent third party certifier and its numeric marking of 1, 2, or 3 indicates the threshold of certification the product has achieved. A majority of HBF’s seating, occasional tables, and conference lines are LEVEL® certified. Please download the certificates from our product pages for the complete details. For more information about the ANSI/BIFMA LEVEL® standard, visit www.levelcertified.org.

**ANSI/BIFMA Performance
Standards**

Our seating products meet or exceed ANSI/BIFMA weight performance standards of 275 lbs. (124.7 kg.) unless otherwise noted.

**Indoor Advantage™
Gold certified**

All HBF seating products are Indoor Advantage™ Gold Certified.

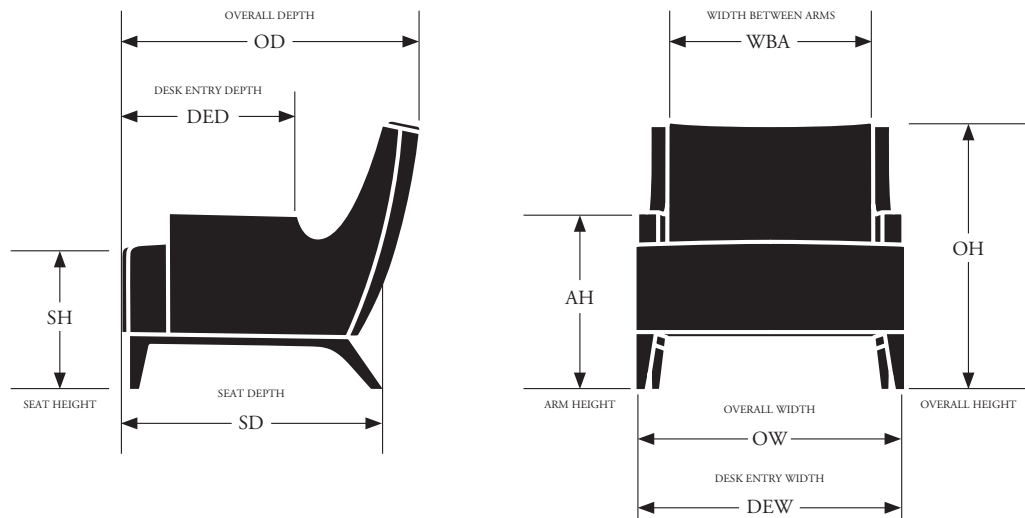
SCS Global Services, a reputable third-party certification and assessment body of environmental, sustainability and safety claims since 1984, has developed internationally recognized standards and certification programs to assist businesses with improving their environmental efforts, social accountability and product performance.

The advantages of holding Indoor Air Quality certification are substantial: in addition to improving indoor working environments and meeting qualifications for the LEED-CI EQ 4.5 credit for office furniture as well as the BIFMA Standard for Low-Emitting Office Furniture Systems & Seating M-7.1, there is the added assurance of knowing that the company’s entire breadth of products is held to such rigorous standards.

For more information regarding Indoor Advantage™, please visit: <http://www.scsglobalservices.com>.

Please contact the HBF Client Experience Team for pricing and lead time information.

Dimension Guide





GSA/Federal Contract Information:

GSA Contract Number 47QSMA22D08P9

Model numbers identified with the following verbiage “When purchased separately without a configurable TAA compliant end product, not on GSA contract” is to mean that these configurable parts or components:

- Have no functionality or capability without being integrated into an end product; and
- Are considered **Open Market** if purchased without a configurable TAA compliant end product.

HBF High Performance Products

HBF and HBF Textiles have long been leaders in contract furnishings and known for industry-leading product design coupled with the highest quality construction, comfort and aesthetic beauty.

Now these same principals are the cornerstones of HBF Healthcare high performance products. We have consulted with healthcare designers and clients to provide products and options for interiors that will provide quality sustainable design solutions for the future. These effective solutions will address the unique interactions required by any high-use facility. Visit www.hbf.com for additional high performance product information.

Seating Product High Performance Options:

- Guest and Lounge Seating
- Arm Caps
- Moisture Barrier
- Wipe Out - Clean Out
- Tandem Seating
- Wall Saver Legs
- Replaceable Components
- Upholstery Products from HBF Textiles

Spring Down Cushions

Optional spring down cushions are available on most loose cushion HBF lounge seating. List upcharges are:

Chair	\$108
Loveseat	\$194
Sofa	\$297

Veneer and Finishes

Wood owes its inherent beauty to variations in color, grain, and texture; therefore, these variations are not considered defects. Due to the natural color and grain variances of wood substance the final finish color, texture and grain may vary from one furniture piece to another even though they are finished at the same time. Exposure to light and the aging process will cause changes in surface color of natural wood products. Light finishes on wood products do not mask the natural characteristics of wood. HBF does not guarantee the exact matching of grain, pattern and color.

An upcharge of **5% Net** COM per seating unit, with a minimum upcharge of **\$500 Net** per order, will apply for any custom wood finish.

Refer to the following page for product material options.

ASH: (AH) FINISHES



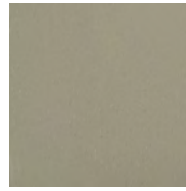
AH310
Smoke Opaque



AH400
Clear



AH402
Black Opaque



AH403
Grey Opaque



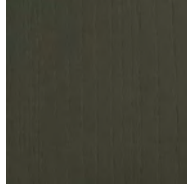
AH404
Warm White Opaque



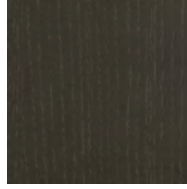
AH405
Mist Opaque



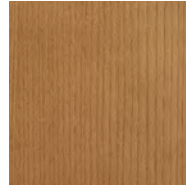
AH406
Denim Opaque



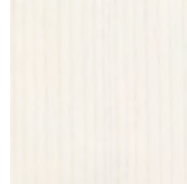
AH407
Pewter Opaque



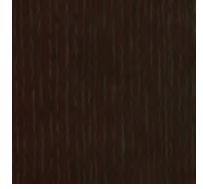
AH408
Peppercorn Opaque



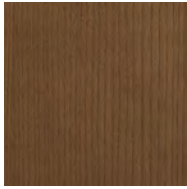
AH901
Amber



AH902
Designer White Opaque



AH911
Warm Brick



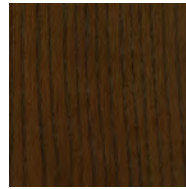
AH929
Nutmeg



AH937
Bark



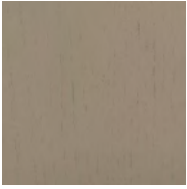
AH984
Dark Roast



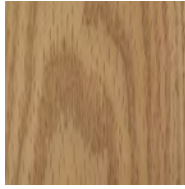
AH993
Sumatra

Screen images are intended as a guide only and should not be regarded as absolutely correct. For exact color/texture, please visit www.hbf.com to request an actual sample.

OAK: (RK) FINISHES



RK310
Smoke Opaque



RK400
Clear



RK402
Black Opaque



RK403
Grey Opaque



RK404
Warm White Opaque



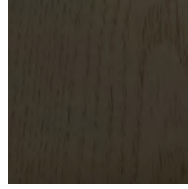
RK405
Mist Opaque



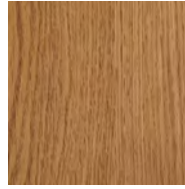
RK406
Denim Opaque



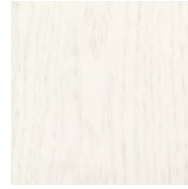
RK407
Pewter Opaque



RK408
Peppercorn Opaque



RK901
Amber



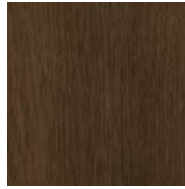
RK902
Designer White Opaque



RK911
Warm Brick



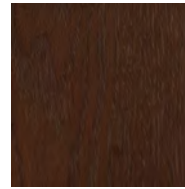
RK929
Nutmeg



RK937
Bark



RK984
Dark Roast



RK993
Sumatra

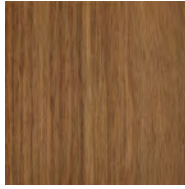
Screen images are intended as a guide only and should not be regarded as absolutely correct. For exact color/texture, please visit www.hbf.com to request an actual sample.



WALNUT: (NT) FINISHES



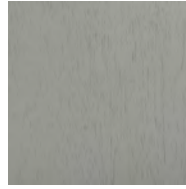
NT310
Smoke Opaque



NT400
Clear



NT402
Black Opaque



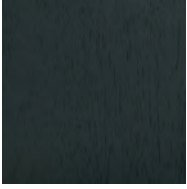
NT403
Grey Opaque



NT404
Warm White Opaque



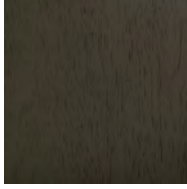
NT405
Mist Opaque



NT406
Denim Opaque



NT407
Pewter Opaque



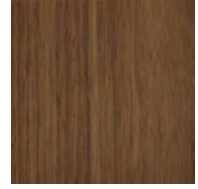
NT408
Peppercorn Opaque



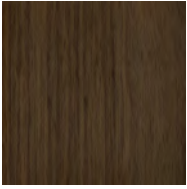
NT902
Designer White Opaque



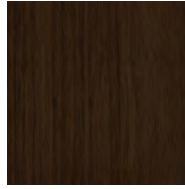
NT911
Warm Brick



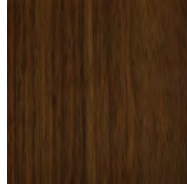
NT929
Nutmeg



NT937
Bark



NT984
Dark Roast



NT993
Sumatra

Screen images are intended as a guide only and should not be regarded as absolutely correct.
For exact color/texture, please visit www.hbf.com to request an actual sample.

MAPLE: (NE) CORE FINISHES *Note: Exclusively available for the Andaz Collection.*



NE310
Smoke Opaque



NE402
Black Opaque



NE406
Denim Opaque



NE902
Designer White Opaque

MAPLE: (NE) CURATED FINISHES *Note: Exclusively available for the Andaz Collection.*



NE150
Conifer Opaque



NE152
Cameo Opaque



NE153
Cordovan Opaque

LAMINATES: (PL) *Note: Available on selected Andaz products only:*



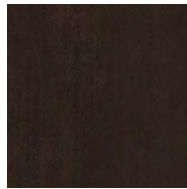
PLS3022T
Denim



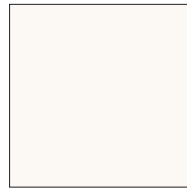
PLSE101SD
Black



PLSG214N
Grey Velvet



PLSG228SD
Peppercorn



PLSW826SD
White

Screen images are intended as a guide only and should not be regarded as absolutely correct. For exact color/texture, please visit www.hbf.com to request an actual sample.



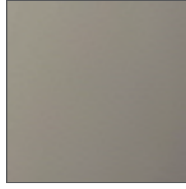
POWDER COATS:



BL
Black

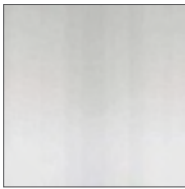


WI
White

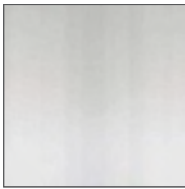


LG
Light Grey

METALS:



POL
Polished Chrome



PC
Polished Chrome (Andaz)

Note: The following available on Carlyle Stools only:



BA
Brushed Aluminum



BB
Brushed Brass

Screen images are intended as a guide only and should not be regarded as absolutely correct. For exact color/texture, please visit www.hbf.com to request an actual sample.



Grade A	Grade B	Grade C	Grade D	Grade E	Grade F
Blink Denim Wash* Walkabout Zippy	Look-see Remember Rush*	Caddy Corner* Checkmate Cuddle Up Picnic Plaid Upbeat	Chenille Striae Crumpled Paper Dot Grid Habu Poppy Skim Coat	Fourfold* Uptown	All Terrain Bunny Cloverleaf Comfort Zone Happy Camper Here & There Knitwork Laugh Lines Moody Moss Notable Grain Sherpa Well-Loved

Grade G	Grade H	Grade J	Grade K	Grade L	Grade M
Beetle Curtain Wall Dashing Equation* Folded Lines High Rise Honest* Inherent Matriarch Pebbled Scribble XS Stardust Upscale	Air Mail* Captain Bubble Crafted Felt Chubby Baby Intersection Lawn Chair Madam Dottie Soft Angles 2.0 Upstart Uptick	Abito Argyle Boucle Belgian Meadow Brushed Canvas Digital Bloom 2.0 Enriched Boucle Glint Lava Rock Quill Scribble XL Sir Stripe-a-lot Tattoo Toile Tessellations Tête-à-Tête Tickled Herring Twist	Afghan Cherished Knit Complex Crosstweed Double Stitch Gather Grateful Grid Heartfelt Merci Boucle Moving Blanket Moving Forward Night Earth Pepper Blend Polygone Quilted Comfort Sideways Sister Solid	Agate Stripe Goosebumps Hipster Landscape Blur Ms. Quilty 2.0 Smart* Sweater Velvet Mix Woven Memory	Crafted Cloud Eccentric Flirt Poodle

Leather I	Leather II	Leather III	Leather IV	Leather V	Leather VI
Clutch	Vivace II	Aviator	Free Way	Wild West	Modern Patina Upper Crust

*Some or all colors to be discontinued in 2024



Andaz Specifications

Collection Details

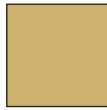
Bar Stool | Counter Stool
Wood Shell | Laminate Shell with Clear Wood Edge | Upholstered | Upholstered with Channel Stitch | No Upholstery

Channel Stitch Options

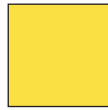
Thread color must be specified on the Andaz Stools for each line item. Specify STD for standard colors. However, thread color may be specified in one of twelve contrasting colors:



10 White



20 Beige



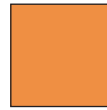
22 Yellow



39 Brown



44 Red



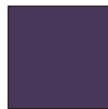
45 Orange



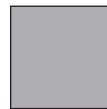
58 Blue



67 Green



77 Purple



84 Light Grey



89 Dark Grey



90 Black

Wood Shell Options

Shell available in ash or maple
Refer to HBF finish options for color selection. Finish selection must be noted on order.

Frame Finishes

Black Powder Coat Metal | White Powder Coat Metal | Polished Chrome

Back Options

Mid Back Stools | Low Back Stools

Feet

Standard Glide | Swivel Glide



	List Price	Sq. Ft.	Yards	Dimensions
Andaz HGQ115-241				
	1195			OH 31½ AH OW 20¼ WBA OD 19½ DED SH 24 DEW SD 17⅞ R Shipping Weight 32 Cube 22

Counter Stool | Low Back | Ash Shell | Metal Frame - Black Powder Coat

ANSI/BIFMA LEVEL® Furniture Sustainability Standard certified
Indoor Advantage™ certified

PLEASE SPECIFY THE FOLLOWING TO ORDER:

MODEL NUMBER	BASE FINISH	SPECIES & FINISH	FOOT	
	Options for metal leg finish: BL = Black Powder Coat WI = White Powder Coat PC = Polished Chrome +\$150	Options for wood finishes: AH = Ash 310 = Smoke Opaque 408 = Peppercorn Opaque 400 = Clear 901 = Amber 402 = Black Opaque 902 = Designer White Opaque 403 = Grey Opaque 911 = Warm Brick 404 = Warm White Opaque 929 = Nutmeg 405 = Mist Opaque 937 = Bark 406 = Denim Opaque 984 = Dark Roast 407 = Pewter Opaque 993 = Sumatra	Options for wood finishes: NE = Maple -\$65 Core Finishes: 310 = Smoke Opaque 402 = Black Opaque 406 = Denim Opaque 902 = Designer White Opaque Curated Finishes: 150 = Conifer Opaque 152 = Cameo Opaque 153 = Cordovan Opaque	Options for foot: G = Glide STD = Standard SVL = Swivel +\$10

HGQ115-241.Base.Wood.Foot Example: HGQ115-241.BL.AH400.GSTD



List Prices

Sq.Ft. Yards Dimensions

Andaz HGQ115-251



COM/COL	1440	Grade G	1495	Leather I	1695	18	1	OH	31½	AH
Grade A	1420	Grade H	1510	Leather II	1775			OW	20¼	WBA
Grade B	1430	Grade J	1520	Leather III	1855			OD	19½	DED
Grade C	1440	Grade K	1540	Leather IV	1935			SH	24¾	DEW
Grade D	1455	Grade L	1575	Leather V	2015			SD	17¾	R
Grade E	1465	Grade M	1620	Leather VI	2095					
Grade F	1475									
								Shipping Weight		32
								Cube		22

Fully Upholstered Seat and Back | Counter Stool | Low Back | Ash Shell | Metal Frame - Black Powder Coat

Note: Please contact the HBF Client Experience Team (855-423-2020) or your sales rep for a list of approved textiles.

ANSI/BIFMA LEVEL® Furniture Sustainability Standard certified
Indoor Advantage™ certified

PLEASE SPECIFY THE FOLLOWING TO ORDER:

MODEL NUMBER	TEXTILES	FLAMMABILITY	BASE FINISH	SPECIES & FINISH	FOOT	
	Indicate fabric choice: <i>See options for fabrics at www.hbftextiles.com</i>	Indicate flammability: U = Cal 117	Options for metal leg finish: BL = Black Powder Coat WI = White Powder Coat PC = Polished Chrome +\$150	Options for wood finishes: AH = Ash 310 = Smoke Opaque 400 = Clear 402 = Black Opaque 403 = Grey Opaque 404 = Warm White Opaque 405 = Mist Opaque 406 = Denim Opaque 407 = Pewter Opaque 408 = Peppercorn Opaque 901 = Amber 902 = Designer White Opaque 911 = Warm Brick 929 = Nutmeg 937 = Bark 984 = Dark Roast 993 = Sumatra	Options for wood finishes: NE = Maple -\$65 <i>Core Finishes:</i> 310 = Smoke Opaque 402 = Black Opaque 406 = Denim Opaque 902 = Designer White Opaque <i>Curated Finishes:</i> 150 = Conifer Opaque 152 = Cameo Opaque 153 = Cordovan Opaque	Options for foot: G = Glide STD = Standard SVL = Swivel +\$10

HGQ115-251.Fabric.Flammability.Base.Wood.Foot Example: HGQ115-251.950-88.BL.AH400.GSTD



List Prices

Sq.Ft. Yards Dimensions

Andaz HGQ115-261



COM/COL	1675	Grade G	1750	Leather I	2055	27	1½	OH	31½	AH
Grade A	1640	Grade H	1775	Leather II	2175			OW	20¼	WBA
Grade B	1660	Grade J	1790	Leather III	2295			OD	19½	DED
Grade C	1675	Grade K	1825	Leather IV	2415			SH	24¾	DEW
Grade D	1690	Grade L	1875	Leather V	2535			SD	17¾	R
Grade E	1710	Grade M	1940	Leather VI	2655					
Grade F	1730									
								Shipping Weight		32
								Cube		22

Fully Upholstered Seat and Back - Channel Stitched | Counter Stool | Low Back | Ash Shell | Metal Frame - Black Powder Coat

Note: Please contact the HBF Client Experience Team (855-423-2020) or your sales rep for a list of approved textiles.

ANSI/BIFMA LEVEL® Furniture Sustainability Standard certified
Indoor Advantage™ certified

PLEASE SPECIFY THE FOLLOWING TO ORDER:

MODEL NUMBER	TEXTILES	FLAMMABILITY	STITCH	BASE FINISH	SPECIES & FINISH	FOOT	
	Indicate fabric choice: <i>See options for fabrics at www.bbf textiles.com</i>	Indicate flammability: U = Cal 117	Options for thread color: <ul style="list-style-type: none"> 10 = White 20 = Beige 22 = Yellow 39 = Brown 44 = Red 45 = Orange 58 = Blue 67 = Green 77 = Purple 84 = Light Grey 89 = Dark Grey 90 = Black SM = Standard Match 	Options for metal leg finish: <ul style="list-style-type: none"> BL = Black Powder Coat WI = White Powder Coat PC = Polished Chrome +\$150 	Options for wood finishes: AH = Ash <ul style="list-style-type: none"> 310 = Smoke Opaque 400 = Clear 402 = Black Opaque 403 = Grey Opaque 404 = Warm White Opaque 405 = Mist Opaque 406 = Denim Opaque 407 = Pewter Opaque 408 = Peppercorn Opaque 901 = Amber 902 = Designer White Opaque 911 = Warm Brick 929 = Nutmeg 937 = Bark 984 = Dark Roast 993 = Sumatra 	Options for wood finishes: NE = Maple -\$65 <i>Core Finishes:</i> <ul style="list-style-type: none"> 310 = Smoke Opaque 402 = Black Opaque 406 = Denim Opaque 902 = Designer White Opaque <i>Curated Finishes:</i> <ul style="list-style-type: none"> 150 = Conifer Opaque 152 = Cameo Opaque 153 = Cordovan Opaque 	Options for foot: G = Glide <ul style="list-style-type: none"> STD = Standard SVL = Swivel +\$10

HGQ115-261.Fabric.Flammability.Stitch.Base.Wood.Foot Example: HGQ115-261.950-88.U.SM.BL.AH400.GSTD



List Price

Dimensions

Andaz HGQ115-271



1205

OH	36½	AH
OW	20¼	WBA
OD	21	DED
SH	24	DEW
SD	17½	R
Shipping Weight		32
Cube		22

Counter Stool | Mid Back | Ash Shell | Metal Frame - Black Powder Coat

ANSI/BIFMA LEVEL® Furniture Sustainability Standard certified
Indoor Advantage™ certified

PLEASE SPECIFY THE FOLLOWING TO ORDER:

MODEL NUMBER	BASE FINISH	SPECIES & FINISH	FOOT
	Options for metal leg finish:	Options for wood finishes: AH = Ash	Options for wood finishes: NE = Maple -\$65
	BL = Black Powder Coat	310 = Smoke Opaque	310 = Smoke Opaque
	WI = White Powder Coat	400 = Clear	402 = Black Opaque
	PC = Polished Chrome +\$150	402 = Black Opaque	406 = Denim Opaque
		403 = Grey Opaque	902 = Designer White Opaque
		404 = Warm White Opaque	<i>Core Finishes:</i>
		405 = Mist Opaque	310 = Smoke Opaque
		406 = Denim Opaque	402 = Black Opaque
		407 = Pewter Opaque	406 = Denim Opaque
		408 = Peppercorn Opaque	902 = Designer White Opaque
		901 = Amber	<i>Curated Finishes:</i>
		902 = Designer White Opaque	150 = Conifer Opaque
		911 = Warm Brick	152 = Cameo Opaque
		929 = Nutmeg	153 = Cordovan Opaque
		937 = Bark	
		984 = Dark Roast	
		993 = Sumatra	
			Options for foot: G = Glide
			STD = Standard
			SVL = Swivel +\$10

HGQ115-271.Base.Wood.Foot Example: HGQ115-271.BL.AH400.GSTD



List Prices

Sq.Ft. Yards Dimensions

Andaz HGQ115-281



COM/COL	1455	Grade G	1510	Leather I	1710	18	1	OH	36½	AH
Grade A	1435	Grade H	1525	Leather II	1790			OW	20¼	WBA
Grade B	1445	Grade J	1535	Leather III	1870			OD	21	DED
Grade C	1455	Grade K	1555	Leather IV	1950			SH	24¾	DEW
Grade D	1470	Grade L	1590	Leather V	2030			SD	17½	R
Grade E	1480	Grade M	1635	Leather VI	2110					
Grade F	1490									
								Shipping Weight		32
								Cube		22

Fully Upholstered Seat and Back | Counter Stool | Mid Back | Ash Shell | Metal Frame - Black Powder Coat

Note: Please contact the HBF Client Experience Team (855-423-2020) or your sales rep for a list of approved textiles.

ANSI/BIFMA LEVEL® Furniture Sustainability Standard certified
Indoor Advantage™ certified

PLEASE SPECIFY THE FOLLOWING TO ORDER:

MODEL NUMBER	TEXTILES	FLAMMABILITY	BASE FINISH	SPECIES & FINISH	FOOT	
	Indicate fabric choice: <i>See options for fabrics at www.hbftextiles.com</i>	Indicate flammability: U = Cal 117	Options for metal leg finish: BL = Black Powder Coat WI = White Powder Coat PC = Polished Chrome +\$150	Options for wood finishes: AH = Ash 310 = Smoke Opaque 400 = Clear 402 = Black Opaque 403 = Grey Opaque 404 = Warm White Opaque 405 = Mist Opaque 406 = Denim Opaque 407 = Pewter Opaque 408 = Peppercorn Opaque 901 = Amber 902 = Designer White Opaque 911 = Warm Brick 929 = Nutmeg 937 = Bark 984 = Dark Roast 993 = Sumatra	Options for wood finishes: NE = Maple -\$65 <i>Core Finishes:</i> 310 = Smoke Opaque 402 = Black Opaque 406 = Denim Opaque 902 = Designer White Opaque <i>Curated Finishes:</i> 150 = Conifer Opaque 152 = Cameo Opaque 153 = Cordovan Opaque	Options for foot: G = Glide STD = Standard SVL = Swivel +\$10

HGQ115-281.Fabric.Flammability.Base.Wood.Foot

Example: HGQ115-281.950-88.U.BL.AH400.GSTD



List Prices

Sq.Ft. Yards Dimensions

Andaz HGQ115-291



COM/COL	1685	Grade G	1760	Leather I	2065	27	1½	OH	36½	AH
Grade A	1650	Grade H	1785	Leather II	2185			OW	20¼	WBA
Grade B	1670	Grade J	1800	Leather III	2305			OD	21	DED
Grade C	1685	Grade K	1835	Leather IV	2425			SH	24¾	DEW
Grade D	1700	Grade L	1885	Leather V	2545			SD	17¾	R
Grade E	1720	Grade M	1950	Leather VI	2665					
Grade F	1740									
								Shipping Weight		32
								Cube		22

Fully Upholstered Seat and Back - Channel Stitch | Counter Stool | Mid Back | Ash Shell | Metal Frame - Black Powder Coat

Note: Please contact the HBF Client Experience Team (855-423-2020) or your sales rep for a list of approved textiles.

ANSI/BIFMA LEVEL® Furniture Sustainability Standard certified
Indoor Advantage™ certified

PLEASE SPECIFY THE FOLLOWING TO ORDER:

MODEL NUMBER	TEXTILES	FLAMMABILITY	STITCH	BASE FINISH	SPECIES & FINISH	FOOT	
	Indicate fabric choice: <i>See options for fabrics at www.bbf textiles.com</i>	Indicate flammability: U = Cal 117	Options for thread color: <ul style="list-style-type: none"> 10 = White 20 = Beige 22 = Yellow 39 = Brown 44 = Red 45 = Orange 58 = Blue 67 = Green 77 = Purple 84 = Light Grey 89 = Dark Grey 90 = Black SM = Standard Match 	Options for metal leg finish: <ul style="list-style-type: none"> BL = Black Powder Coat WI = White Powder Coat PC = Polished Chrome +\$150 	Options for wood finishes: AH = Ash <ul style="list-style-type: none"> 310 = Smoke Opaque 400 = Clear 402 = Black Opaque 403 = Grey Opaque 404 = Warm White Opaque 405 = Mist Opaque 406 = Denim Opaque 407 = Pewter Opaque 408 = Peppercorn Opaque 901 = Amber 902 = Designer White Opaque 911 = Warm Brick 929 = Nutmeg 937 = Bark 984 = Dark Roast 993 = Sumatra 	Options for wood finishes: NE = Maple -\$65 <ul style="list-style-type: none"> 310 = Smoke Opaque 402 = Black Opaque 406 = Denim Opaque 902 = Designer White Opaque <p><i>Core Finishes:</i></p> <ul style="list-style-type: none"> 150 = Conifer Opaque 152 = Cameo Opaque 153 = Cordovan Opaque <p><i>Curated Finishes:</i></p>	Options for foot: G = Glide <ul style="list-style-type: none"> STD = Standard SVL = Swivel +\$10

HGQ115-291.Fabric.Flammability.Stitch.Base.Wood.Foot Example: HGQ115-291.950-88.U.SM.BL.AH400.GSTD



List Price

Dimensions

Andaz HGQ115-301



1255

OH 37½ AH
OW 20¼ WBA
OD 20 DED
SH 30 DEW
SD 17⅝ R

Shipping Weight 32
Cube 25

Barstool | Low Back | Ash Shell | Metal Frame - Black Powder Coat

ANSI/BIFMA LEVEL® Furniture Sustainability Standard certified
Indoor Advantage™ certified

PLEASE SPECIFY THE FOLLOWING TO ORDER:

MODEL NUMBER	BASE FINISH	SPECIES & FINISH	FOOT	
	Options for metal leg finish: BL = Black Powder Coat WI = White Powder Coat PC = Polished Chrome +\$150	Options for wood finishes: AH = Ash <i>Core Finishes:</i> 310 = Smoke Opaque 400 = Clear 402 = Black Opaque 403 = Grey Opaque 404 = Warm White Opaque 405 = Mist Opaque 406 = Denim Opaque 407 = Pewter Opaque 408 = Peppercorn Opaque 901 = Amber 902 = Designer White Opaque 911 = Warm Brick 929 = Nutmeg 937 = Bark 984 = Dark Roast 993 = Sumatra	Options for wood finishes: NE = Maple -\$65 <i>Core Finishes:</i> 310 = Smoke Opaque 402 = Black Opaque 406 = Denim Opaque 902 = Designer White Opaque <i>Curated Finishes:</i> 150 = Conifer Opaque 152 = Cameo Opaque 153 = Cordovan Opaque	Options for foot: G = Glide STD = Standard SVL = Swivel +\$10

HGQ115-301.Base.Wood.Foot Example: HGQ115-301.BL.AH400.GSTD



List Prices

Sq.Ft. Yards Dimensions

Andaz HGQ115-311



COM/COL	1470	Grade G	1555	Leather I	1755	18	1	OH	37½	AH
Grade A	1480	Grade H	1570	Leather II	1835			OW	20¼	WBA
Grade B	1490	Grade J	1580	Leather III	1915			OD	20	DED
Grade C	1500	Grade K	1600	Leather IV	1995			SH	30¾	DEW
Grade D	1515	Grade L	1635	Leather V	2075			SD	17½	R
Grade E	1525	Grade M	1680	Leather VI	2155					
Grade F	1535									
								Shipping Weight		32
								Cube		22

Fully Upholstered Seat and Back | Barstool | Low Back | Ash Shell | Metal Frame - Black Powder Coat

Note: Please contact the HBF Client Experience Team (855-423-2020) or your sales rep for a list of approved textiles.

ANSI/BIFMA LEVEL® Furniture Sustainability Standard certified
Indoor Advantage™ certified

PLEASE SPECIFY THE FOLLOWING TO ORDER:

MODEL NUMBER	TEXTILES	FLAMMABILITY	BASE FINISH	SPECIES & FINISH	FOOT	
	Indicate fabric choice: <i>See options for fabrics at www.hbftextiles.com</i>	Indicate flammability: U = Cal 117	Options for metal leg finish: BL = Black Powder Coat WI = White Powder Coat PC = Polished Chrome +\$150	Options for wood finishes: AH = Ash 310 = Smoke Opaque 400 = Clear 402 = Black Opaque 403 = Grey Opaque 404 = Warm White Opaque 405 = Mist Opaque 406 = Denim Opaque 407 = Pewter Opaque 408 = Peppercorn Opaque 901 = Amber 902 = Designer White Opaque 911 = Warm Brick 929 = Nutmeg 937 = Bark 984 = Dark Roast 993 = Sumatra	Options for wood finishes: NE = Maple -\$65 <i>Core Finishes:</i> 310 = Smoke Opaque 402 = Black Opaque 406 = Denim Opaque 902 = Designer White Opaque <i>Curated Finishes:</i> 150 = Conifer Opaque 152 = Cameo Opaque 153 = Cordovan Opaque	Options for foot: G = Glide STD = Standard SVL = Swivel +\$10

HGQ115-311.Fabric.Flammability.Base.Wood.Foot

Example: HGQ115-311.950-88.U.BL.AH400.GSTD



List Prices

Sq.Ft. Yards Dimensions

Andaz HGQ115-321



COM/COL	1805	Grade G	1880	Leather I	2185	27	1½	OH	37½	AH
Grade A	1770	Grade H	1905	Leather II	2305			OW	20¼	WBA
Grade B	1790	Grade J	1920	Leather III	2425			OD	20	DED
Grade C	1805	Grade K	1955	Leather IV	2545			SH	30¾	DEW
Grade D	1820	Grade L	2005	Leather V	2665			SD	17¼	R
Grade E	1840	Grade M	2070	Leather VI	2785					
Grade F	1860									
								Shipping Weight		32
								Cube		22

Fully Upholstered Seat and Back - Channel Stitch | Barstool | Low Back | Ash Shell | Metal Frame - Black Powder Coat

Note: Please contact the HBF Client Experience Team (855-423-2020) or your sales rep for a list of approved textiles.

ANSI/BIFMA LEVEL® Furniture Sustainability Standard certified
Indoor Advantage™ certified

PLEASE SPECIFY THE FOLLOWING TO ORDER:

MODEL NUMBER	TEXTILES	FLAMMABILITY	STITCH	BASE FINISH	SPECIES & FINISH	FOOT	
	Indicate fabric choice: <i>See options for fabrics at www.bbf textiles.com</i>	Indicate flammability: U = Cal 117	Options for thread color: <ul style="list-style-type: none"> 10 = White 20 = Beige 22 = Yellow 39 = Brown 44 = Red 45 = Orange 58 = Blue 67 = Green 77 = Purple 84 = Light Grey 89 = Dark Grey 90 = Black SM = Standard Match 	Options for metal leg finish: <ul style="list-style-type: none"> BL = Black Powder Coat WI = White Powder Coat PC = Polished Chrome +\$150 	Options for wood finishes: AH = Ash <ul style="list-style-type: none"> 310 = Smoke Opaque 400 = Clear 402 = Black Opaque 403 = Grey Opaque 404 = Warm White Opaque 405 = Mist Opaque 406 = Denim Opaque 407 = Pewter Opaque 408 = Peppercorn Opaque 901 = Amber 902 = Designer White Opaque 911 = Warm Brick 929 = Nutmeg 937 = Bark 984 = Dark Roast 993 = Sumatra 	Options for wood finishes: NE = Maple -\$65 <ul style="list-style-type: none"> 310 = Smoke Opaque 402 = Black Opaque 406 = Denim Opaque 902 = Designer White Opaque <p><i>Core Finishes:</i></p> <ul style="list-style-type: none"> 150 = Conifer Opaque 152 = Cameo Opaque 153 = Cordovan Opaque <p><i>Curated Finishes:</i></p>	Options for foot: G = Glide <ul style="list-style-type: none"> STD = Standard SVL = Swivel +\$10

HGQ115-321.Fabric.Flammability.Stitch.Base.Wood.Foot Example: HGQ115-321.950-88.U.SM.BL.AH400.GSTD



List Price

Dimensions

Andaz HGQ115-331



1275

OH 42½ AH
OW 20¼ WBA
OD 21½ DED
SH 30 DEW
SD 17⅞ R

Shipping Weight 35
Cube 29

Barstool | Mid Back | Ash Shell | Metal Frame - Black Powder Coat

ANSI/BIFMA LEVEL® Furniture Sustainability Standard certified
Indoor Advantage™ certified

PLEASE SPECIFY THE FOLLOWING TO ORDER:

MODEL NUMBER	BASE FINISH	SPECIES & FINISH	FOOT
	Options for metal leg finish: <ul style="list-style-type: none"> BL = Black Powder Coat WI = White Powder Coat PC = Polished Chrome +\$150 	Options for wood finishes: AH = Ash <i>Core Finishes:</i> <ul style="list-style-type: none"> 310 = Smoke Opaque 400 = Clear 402 = Black Opaque 403 = Grey Opaque 404 = Warm White Opaque 405 = Mist Opaque 406 = Denim Opaque 407 = Pewter Opaque 408 = Peppercorn Opaque 901 = Amber 902 = Designer White Opaque 911 = Warm Brick 929 = Nutmeg 937 = Bark 984 = Dark Roast 993 = Sumatra 	Options for wood finishes: NE = Maple -\$65 <i>Core Finishes:</i> <ul style="list-style-type: none"> 310 = Smoke Opaque 402 = Black Opaque 406 = Denim Opaque 902 = Designer White Opaque <i>Curated Finishes:</i> <ul style="list-style-type: none"> 150 = Conifer Opaque 152 = Cameo Opaque 153 = Cordovan Opaque
			Options for foot: G = Glide <ul style="list-style-type: none"> STD = Standard SVL = Swivel +\$10

HGQ115-331.Base.Wood.Foot Example: HGQ115-331.BL.AH400.GSTD



List Prices

Sq.Ft. Yards Dimensions

Andaz HGQ115-341



COM/COL	1490	Grade G	1575	Leather I	1775	18	1	OH	42½	AH
Grade A	1500	Grade H	1590	Leather II	1855			OW	20¾	WBA
Grade B	1510	Grade J	1600	Leather III	1935			OD	21½	DED
Grade C	1520	Grade K	1620	Leather IV	2015			SH	30¾	DEW
Grade D	1535	Grade L	1655	Leather V	2095			SD	17¾	R
Grade E	1545	Grade M	1700	Leather VI	2175					
Grade F	1555									
								Shipping Weight		41
								Cube		35

Fully Upholstered Seat and Back | Barstool | Mid Back | Ash Shell | Metal Frame - Black Powder Coat

Note: Please contact the HBF Client Experience Team (855-423-2020) or your sales rep for a list of approved textiles.

ANSI/BIFMA LEVEL® Furniture Sustainability Standard certified
Indoor Advantage™ certified

PLEASE SPECIFY THE FOLLOWING TO ORDER:

MODEL NUMBER	TEXTILES	FLAMMABILITY	BASE FINISH	SPECIES & FINISH	FOOT	
	Indicate fabric choice: <i>See options for fabrics at www.hbftextiles.com</i>	Indicate flammability: U = Cal 117	Options for metal leg finish: BL = Black Powder Coat WI = White Powder Coat PC = Polished Chrome +\$150	Options for wood finishes: AH = Ash 310 = Smoke Opaque 400 = Clear 402 = Black Opaque 403 = Grey Opaque 404 = Warm White Opaque 405 = Mist Opaque 406 = Denim Opaque 407 = Pewter Opaque 408 = Peppercorn Opaque 901 = Amber 902 = Designer White Opaque 911 = Warm Brick 929 = Nutmeg 937 = Bark 984 = Dark Roast 993 = Sumatra	Options for wood finishes: NE = Maple -\$65 <i>Core Finishes:</i> 310 = Smoke Opaque 402 = Black Opaque 406 = Denim Opaque 902 = Designer White Opaque <i>Curated Finishes:</i> 150 = Conifer Opaque 152 = Cameo Opaque 153 = Cordovan Opaque	Options for foot: G = Glide STD = Standard SVL = Swivel +\$10

HGQ115-341.Fabric.Flammability.Base.Wood.Foot

Example: HGQ115-341.950-88.U.BL.AH400.GSTD



List Prices

Sq.Ft. Yards Dimensions

Andaz HGQ115-351



COM/COL	1780	Grade G	1905	Leather I	2210	27	1½	OH	42½	AH
Grade A	1795	Grade H	1930	Leather II	2330			OW	20¾	WBA
Grade B	1815	Grade J	1945	Leather III	2450			OD	21½	DED
Grade C	1830	Grade K	1980	Leather IV	2570			SH	30¾	DEW
Grade D	1845	Grade L	2030	Leather V	2690			SD	17¾	R
Grade E	1865	Grade M	2095	Leather VI	2810					
Grade F	1885									
								Shipping Weight		41
								Cube		35

Fully Upholstered Seat and Back - Channel Stitch | Barstool | Mid Back | Ash Shell | Metal Frame - Black Powder Coat

Note: Please contact the HBF Client Experience Team (855-423-2020) or your sales rep for a list of approved textiles.

ANSI/BIFMA LEVEL® Furniture Sustainability Standard certified
Indoor Advantage™ certified

PLEASE SPECIFY THE FOLLOWING TO ORDER:

MODEL NUMBER	TEXTILES	FLAMMABILITY	STITCH	BASE FINISH	SPECIES & FINISH	FOOT	
	Indicate fabric choice: <i>See options for fabrics at www.bbf textiles.com</i>	Indicate flammability: U = Cal 117	Options for thread color: <ul style="list-style-type: none"> 10 = White 20 = Beige 22 = Yellow 39 = Brown 44 = Red 45 = Orange 58 = Blue 67 = Green 77 = Purple 84 = Light Grey 89 = Dark Grey 90 = Black SM = Standard Match 	Options for metal leg finish: <ul style="list-style-type: none"> BL = Black Powder Coat WI = White Powder Coat PC = Polished Chrome +\$150 	Options for wood finishes: AH = Ash <ul style="list-style-type: none"> 310 = Smoke Opaque 400 = Clear 402 = Black Opaque 403 = Grey Opaque 404 = Warm White Opaque 405 = Mist Opaque 406 = Denim Opaque 407 = Pewter Opaque 408 = Peppercorn Opaque 901 = Amber 902 = Designer White Opaque 911 = Warm Brick 929 = Nutmeg 937 = Bark 984 = Dark Roast 993 = Sumatra 	Options for wood finishes: NE = Maple -\$65 <ul style="list-style-type: none"> 310 = Smoke Opaque 402 = Black Opaque 406 = Denim Opaque 902 = Designer White Opaque <p><i>Core Finishes:</i></p> <ul style="list-style-type: none"> 150 = Conifer Opaque 152 = Cameo Opaque 153 = Cordovan Opaque <p><i>Curated Finishes:</i></p>	Options for foot: G = Glide <ul style="list-style-type: none"> STD = Standard SVL = Swivel +\$10

HGQ115-351.Fabric.Flammability.Stitch.Base.Wood.Foot Example: HGQ115-351.950-88.U.SM.BL.AH400.GSTD



List Price

Dimensions

Andaz HGQ115-391



880

OH 31½ AH
OW 20¼ WBA
OD 19½ DED
SH 24 DEW
SD 17⅞ R

Shipping Weight 32
Cube 22

Counter Stool | Low Back | Laminate Shell | Metal Frame - Black Powder Coat

ANSI/BIFMA LEVEL® Furniture Sustainability Standard certified
Indoor Advantage™ certified

PLEASE SPECIFY THE FOLLOWING TO ORDER:

MODEL NUMBER	BASE FINISH	FINISH	FOOT
	Options for metal leg finish: BL = Black Powder Coat WI = White Powder Coat PC = Polished Chrome +\$150	Options for laminate finishes: PL = Laminate S3022T = Denim SE101SD = Black SG214N = Grey Velvet SG228SD = Peppercorn SW826SD = White	Options for foot: G = Glide STD = Standard SVL = Swivel +\$10

HGQ115-391.Base.Finish.Foot Example: HGQ115-391.BL.PLSE101SD.GSTD



List Prices

Sq.Ft. Yards Dimensions

Andaz HGQ115-401



COM/COL	1130	Grade G	1185	Leather I	1385	18	1	OH	31½	AH
Grade A	1110	Grade H	1200	Leather II	1465			OW	20¼	WBA
Grade B	1120	Grade J	1210	Leather III	1545			OD	19½	DED
Grade C	1130	Grade K	1230	Leather IV	1625			SH	24¾	DEW
Grade D	1145	Grade L	1265	Leather V	1705			SD	17¾	R
Grade E	1155	Grade M	1310	Leather VI	1785					
Grade F	1165									
								Shipping Weight		32
								Cube		22

Fully Upholstered Seat and Back | Counter Stool | Low Back | Laminate Shell | Metal Frame - Black Powder Coat

Note: Please contact the HBF Client Experience Team (855-423-2020) or your sales rep for a list of approved textiles.

PLEASE SPECIFY THE FOLLOWING TO ORDER:

MODEL NUMBER	TEXTILES	FLAMMABILITY	BASE FINISH	FINISH	FOOT
	Indicate fabric choice: <i>See options for fabrics at www.hbftextiles.com</i>	Indicate flammability: U = Cal 117	Options for metal leg finish: BL = Black Powder Coat WI = White Powder Coat PC = Polished Chrome +\$150	Options for laminate finishes: PL = Laminate S3022T = Denim SE101SD = Black SG214N = Grey Velvet SG228SD = Peppercorn SW826SD = White	Options for foot: G = Glide STD = Standard SVL = Swivel +\$10

HGQ115-401.Fabric.Flammability.Base.Finish.Foot Example: HGQ115-401.950-88.U.BL.PLSE101SD.GSTD



List Prices

Sq.Ft. Yards Dimensions

Andaz HGQ115-411



COM/COL	1360	Grade G	1435	Leather I	1740	27	1½	OH	31½	AH
Grade A	1325	Grade H	1460	Leather II	1860			OW	20¼	WBA
Grade B	1345	Grade J	1475	Leather III	1980			OD	19½	DED
Grade C	1360	Grade K	1510	Leather IV	2100			SH	24¾	DEW
Grade D	1375	Grade L	1560	Leather V	2220			SD	17¾	R
Grade E	1395	Grade M	1625	Leather VI	2340					
Grade F	1415									
								Shipping Weight		32
								Cube		22

Fully Upholstered Seat and Back - Channel Stitch | Counter Stool | Low Back | Laminate Shell | Metal Frame - Black Powder Coat

Note: Please contact the HBF Client Experience Team (855-423-2020) or your sales rep for a list of approved textiles.

PLEASE SPECIFY THE FOLLOWING TO ORDER:

MODEL NUMBER	TEXTILES	FLAMMABILITY	STITCH	BASE FINISH	FINISH	FOOT
	Indicate fabric choice: <i>See options for fabrics at www.hbf textiles.com</i>	Indicate flammability: U = Cal 117	Options for thread color: 10 = White 20 = Beige 22 = Yellow 39 = Brown 44 = Red 45 = Orange 58 = Blue 67 = Green 77 = Purple 84 = Light Grey 89 = Dark Grey 90 = Black SM = Standard Match	Options for metal leg finish: BL = Black Powder Coat WI = White Powder Coat PC = Polished Chrome +\$150	Options for laminate finishes: PL = Laminate S3022T = Denim SE101SD = Black SG214N = Grey Velvet SG228SD = Peppercorn SW826SD = White	Options for foot: G = Glide STD = Standard SVL = Swivel +\$10

HGQ115-411.Fabric.Flammability.Stitch.Base.Finish.Foot Example: HGQ115-411.950-88.U.SM.BL.PLSE101SD.GSTD



List Price

Dimensions

Andaz HGQ115-421



895

OH 36½ AH
OW 20¼ WBA
OD 19½ DED
SH 24¾ DEW
SD 17⅞ R

Shipping Weight 32
Cube 22

Counter Stool | Mid Back | Laminate Shell | Metal Frame - Black Powder Coat

PLEASE SPECIFY THE FOLLOWING TO ORDER:

MODEL NUMBER	BASE FINISH	FINISH	FOOT
	Options for metal leg finish: BL = Black Powder Coat W1 = White Powder Coat PC = Polished Chrome +\$150	Options for laminate finishes: PL = Laminate S3022T = Denim SE101SD = Black SG214N = Grey Velvet SG228SD = Peppercorn SW826SD = White	Options for foot: G = Glide STD = Standard SVL = Swivel +\$10

HGQ115-421.Base.Finish.Foot Example: HGQ115-421.BL.PLSE101SD.GSTD



List Prices

Sq.Ft. Yards Dimensions

Andaz HGQ115-431



COM/COL	1110	Grade G	1195	Leather I	1395	18	1	OH	36½	AH
Grade A	1140	Grade H	1210	Leather II	1475			OW	20¾	WBA
Grade B	1130	Grade J	1220	Leather III	1555			OD	19½	DED
Grade C	1140	Grade K	1240	Leather IV	1635			SH	24¾	DEW
Grade D	1155	Grade L	1275	Leather V	1715			SD	17¾	R
Grade E	1165	Grade M	1320	Leather VI	1795					
Grade F	1175									
								Shipping Weight		32
								Cube		22

Fully Upholstered Seat and Back | Counter Stool | Mid Back | Laminate Shell | Metal Frame - Black Powder Coat

Note: Please contact the HBF Client Experience Team (855-423-2020) or your sales rep for a list of approved textiles.

PLEASE SPECIFY THE FOLLOWING TO ORDER:

MODEL NUMBER	TEXTILES	FLAMMABILITY	BASE FINISH	FINISH	FOOT
	Indicate fabric choice: <i>See options for fabrics at www.hbftextiles.com</i>	Indicate flammability: U = Cal 117	Options for metal leg finish: BL = Black Powder Coat WI = White Powder Coat PC = Polished Chrome +\$150	Options for laminate finishes: PL = Laminate S3022T = Denim SE101SD = Black SG214N = Grey Velvet SG228SD = Peppercorn SW826SD = White	Options for foot: G = Glide STD = Standard SVL = Swivel +\$10

HGQ115-431.Fabric.Flammability.Base.Finish.Foot Example: HGQ115-431.950-88.U.BL.PLSE101SD.GSTD



List Prices

Sq.Ft. Yards Dimensions

Andaz HGQ115-441



COM/COL	1375	Grade G	1450	Leather I	1755	27	1½	OH	36½	AH
Grade A	1340	Grade H	1475	Leather II	1875			OW	20¼	WBA
Grade B	1360	Grade J	1490	Leather III	1995			OD	19½	DED
Grade C	1375	Grade K	1525	Leather IV	2115			SH	24¾	DEW
Grade D	1390	Grade L	1575	Leather V	2235			SD	17¼	R
Grade E	1410	Grade M	1640	Leather VI	2355					
Grade F	1430									
								Shipping Weight		32
								Cube		22

Fully Upholstered Seat and Back - Channel Stitch | Counter Stool | Mid Back | Laminate Shell | Metal Frame - Black Powder Coat

Note: Please contact the HBF Client Experience Team (855-423-2020) or your sales rep for a list of approved textiles.

PLEASE SPECIFY THE FOLLOWING TO ORDER:

MODEL NUMBER	TEXTILES	FLAMMABILITY	STITCH	BASE FINISH	FINISH	FOOT
	Indicate fabric choice: <i>See options for fabrics at www.bbftextiles.com</i>	Indicate flammability: U = Cal 117	Options for thread color: 10 = White 20 = Beige 22 = Yellow 39 = Brown 44 = Red 45 = Orange 58 = Blue 67 = Green 77 = Purple 84 = Light Grey 89 = Dark Grey 90 = Black SM = Standard Match	Options for metal leg finish: BL = Black Powder Coat WI = White Powder Coat PC = Polished Chrome +\$150	Options for laminate finishes: PL = Laminate S3022T = Denim SE101SD = Black SG214N = Grey Velvet SG228SD = Peppercorn SW826SD = White	Options for foot: G = Glide STD = Standard SVL = Swivel +\$10

HGQ115-441.Fabric.Flammability.Stitch.Base.Finish.Foot Example: HGQ115-441.950-88.U.SM.BL.PLSE101SD.GSTD



List Price

Dimensions

Andaz HGQ115-451



950

OH 37½ AH
 OW 20¼ WBA
 OD 20½ DED
 SH 30 DEW
 SD 17⅞ R

Shipping Weight 32
 Cube 22

Barstool | Low Back | Laminate Shell | Metal Frame - Black Powder Coat

PLEASE SPECIFY THE FOLLOWING TO ORDER:

MODEL NUMBER	BASE FINISH	FINISH	FOOT
	Options for metal leg finish: BL = Black Powder Coat W1 = White Powder Coat PC = Polished Chrome +\$150	Options for laminate finishes: PL = Laminate S3022T = Denim SE101SD = Black SG214N = Grey Velvet SG228SD = Peppercorn SW826SD = White	Options for foot: G = Glide STD = Standard SVL = Swivel +\$10

HGQ115-451.Base.Finish.Foot Example: HGQ115-451.BL.PLSE101SD.GSTD



List Prices

Sq.Ft. Yards Dimensions

Andaz HGQ115-461



COM/COL	1200	Grade G	1255	Leather I	1455	18	1	OH	37½	AH
Grade A	1180	Grade H	1270	Leather II	1535			OW	20¼	WBA
Grade B	1190	Grade J	1280	Leather III	1615			OD	20	DED
Grade C	1200	Grade K	1300	Leather IV	1695			SH	30¾	DEW
Grade D	1215	Grade L	1335	Leather V	1775			SD	17½	R
Grade E	1225	Grade M	1380	Leather VI	1855					
Grade F	1235									
								Shipping Weight		32
								Cube		22

Fully Upholstered Seat and Back | Barstool | Low Back | Laminate Shell | Metal Frame - Black Powder Coat

Note: Please contact the HBF Client Experience Team (855-423-2020) or your sales rep for a list of approved textiles.

PLEASE SPECIFY THE FOLLOWING TO ORDER:

MODEL NUMBER	TEXTILES	FLAMMABILITY	BASE FINISH	FINISH	FOOT
	Indicate fabric choice: <i>See options for fabrics at www.hbftextiles.com</i>	Indicate flammability: U = Cal 117	Options for metal leg finish: BL = Black Powder Coat WI = White Powder Coat PC = Polished Chrome +\$150	Options for laminate finishes: PL = Laminate S3022T = Denim SE101SD = Black SG214N = Grey Velvet SG228SD = Peppercorn SW826SD = White	Options for foot: G = Glide STD = Standard SVL = Swivel +\$10

HGQ115-461.Fabric.Flammability.Base.Finish.Foot Example: HGQ115-461.950-88.U.BL.PLSE101SD.GSTD



List Prices

Sq.Ft. Yards Dimensions

Andaz HGQ115-471



COM/COL	1495	Grade G	1570	Leather I	1875	27	1½	OH	37½	AH
Grade A	1460	Grade H	1595	Leather II	1995			OW	20¼	WBA
Grade B	1480	Grade J	1610	Leather III	2115			OD	20	DED
Grade C	1495	Grade K	1645	Leather IV	2235			SH	30¾	DEW
Grade D	1510	Grade L	1695	Leather V	2355			SD	17¾	R
Grade E	1530	Grade M	1760	Leather VI	2475					
Grade F	1550									
								Shipping Weight		32
								Cube		22

Fully Upholstered Seat and Back - Channel Stitch | Barstool | Low Back | Laminate Shell | Metal Frame - Black Powder Coat

Note: Please contact the HBF Client Experience Team (855-423-2020) or your sales rep for a list of approved textiles.

PLEASE SPECIFY THE FOLLOWING TO ORDER:

MODEL NUMBER	TEXTILES	FLAMMABILITY	STITCH	BASE FINISH	FINISH	FOOT
	Indicate fabric choice: <i>See options for fabrics at www.bbftextiles.com</i>	Indicate flammability: U = Cal 117	Options for thread color: 10 = White 20 = Beige 22 = Yellow 39 = Brown 44 = Red 45 = Orange 58 = Blue 67 = Green 77 = Purple 84 = Light Grey 89 = Dark Grey 90 = Black SM = Standard Match	Options for metal leg finish: BL = Black Powder Coat WI = White Powder Coat PC = Polished Chrome +\$150	Options for laminate finishes: PL = Laminate S3022T = Denim SE101SD = Black SG214N = Grey Velvet SG228SD = Peppercorn SW826SD = White	Options for foot: G = Glide STD = Standard SVL = Swivel +\$10

HGQ115-471.Fabric.Flammability.Stitch.Base.Finish.Foot Example: HGQ115-471.950-88.U.SM.BL.PLSE101SD.GSTD



List Price

Dimensions

Andaz HGQ115-481



965

OH 42½ AH
OW 20¼ WBA
OD 21½ DED
SH 30 DEW
SD 17⅞ R

Shipping Weight 35
Cube 29

Barstool | Mid Back | Laminate Shell | Metal Frame - Black Powder Coat

PLEASE SPECIFY THE FOLLOWING TO ORDER:

MODEL NUMBER	BASE FINISH	FINISH	FOOT
	Options for metal leg finish: BL = Black Powder Coat W1 = White Powder Coat PC = Polished Chrome +\$150	Options for laminate finishes: PL = Laminate S3022T = Denim SE101SD = Black SG214N = Grey Velvet SG228SD = Peppercorn SW826SD = White	Options for foot: G = Glide STD = Standard SVL = Swivel +\$10

HGQ115-481.Base.Finish.Foot Example: HGQ115-481.BL.PLSE101SD.GSTD



List Prices

Sq.Ft. Yards Dimensions

Andaz HGQ115-491



COM/COL	1215	Grade G	1270	Leather I	1470	18	1	OH	42½	AH
Grade A	1195	Grade H	1285	Leather II	1550			OW	20¾	WBA
Grade B	1205	Grade J	1295	Leather III	1630			OD	21½	DED
Grade C	1215	Grade K	1315	Leather IV	1710			SH	30¾	DEW
Grade D	1230	Grade L	1350	Leather V	1790			SD	17¾	R
Grade E	1240	Grade M	1395	Leather VI	1870					
Grade F	1250									
								Shipping Weight		41
								Cube		35

Fully Upholstered Seat and Back | Barstool | Mid Back | Laminate Shell | Metal Frame - Black Powder Coat

Note: Please contact the HBF Client Experience Team (855-423-2020) or your sales rep for a list of approved textiles.

PLEASE SPECIFY THE FOLLOWING TO ORDER:

MODEL NUMBER	TEXTILES	FLAMMABILITY	BASE FINISH	FINISH	FOOT
	Indicate fabric choice: <i>See options for fabrics at www.hbftextiles.com</i>	Indicate flammability: U = Cal 117	Options for metal leg finish: BL = Black Powder Coat WI = White Powder Coat PC = Polished Chrome +\$150	Options for laminate finishes: PL = Laminate S3022T = Denim SE101SD = Black SG214N = Grey Velvet SG228SD = Peppercorn SW826SD = White	Options for foot: G = Glide STD = Standard SVL = Swivel +\$10

HGQ115-491.Fabric.Flammability.Base.Finish.Foot Example: HGQ115-491.950-88.U.BL.PLSE101SD.GSTD



List Prices

Sq.Ft. Yards Dimensions

Andaz HGQ115-501



COM/COL	1510	Grade G	1585	Leather I	1890	27	1½	OH	42½	AH
Grade A	1475	Grade H	1610	Leather II	2010			OW	20¾	WBA
Grade B	1495	Grade J	1625	Leather III	2130			OD	21½	DED
Grade C	1510	Grade K	1660	Leather IV	2250			SH	30¾	DEW
Grade D	1525	Grade L	1710	Leather V	2370			SD	17¾	R
Grade E	1545	Grade M	1775	Leather VI	2490					
Grade F	1,565									
								Shipping Weight		41
								Cube		35

Fully Upholstered Seat and Back - Channel Stitch | Barstool | Mid Back | Laminate Shell | Metal Frame - Black Powder Coat

Note: Please contact the HBF Client Experience Team (855-423-2020) or your sales rep for a list of approved textiles.

PLEASE SPECIFY THE FOLLOWING TO ORDER:

MODEL NUMBER	TEXTILES	FLAMMABILITY	STITCH	BASE FINISH	FINISH	FOOT
	Indicate fabric choice: <i>See options for fabrics at www.bbftextiles.com</i>	Indicate flammability: U = Cal 117	Options for thread color: 10 = White 20 = Beige 22 = Yellow 39 = Brown 44 = Red 45 = Orange 58 = Blue 67 = Green 77 = Purple 84 = Light Grey 89 = Dark Grey 90 = Black SM = Standard Match	Options for metal leg finish: BL = Black Powder Coat WI = White Powder Coat PC = Polished Chrome +\$150	Options for laminate finishes: PL = Laminate S3022T = Denim SE101SD = Black SG214N = Grey Velvet SG228SD = Peppercorn SW826SD = White	Options for foot: G = Glide STD = Standard SVL = Swivel +\$10

HGQ115-501.Fabric.Flammability.Stitch.Base.Finish.Foot Example: HGQ115-501.950-88.U.SM.BL.PLSE101SD.GSTD



Carlyle Series Specifications

Collection Details

Barstool | Counter Stool

Upholstered | Not Upholstered

Wood Options

Frame available in Ash.

Refer to HBF Standard Ash finishes for color selection. Finish selection must be noted on order.

Stretcher Options

Brushed Brass | Brushed Aluminum

Stretcher is standard in brushed aluminum.



List Prices

Sq.Ft. Yards Dimensions

Carlyle with Stretcher HGT115-101



COM/COL	2540	Grade G	2615	Leather I	2920	27	1½	OH	36¾	AH
Grade A	2505	Grade H	2640	Leather II	3040			OW	18¾	WBA
Grade B	2525	Grade J	2655	Leather III	3160			OD	20½	DED
Grade C	2540	Grade K	2690	Leather IV	3280			SH	25	DEW
Grade D	2555	Grade L	2740	Leather V	3400			SD	15¼	R
Grade E	2575	Grade M	2805	Leather VI	3520					
Grade F	2595									
								Shipping Weight		42
								Cube		25

Counter Stool - Ash Frame | Fully Upholstered Seat and Back | Aluminum Stretcher

Product rated at 350 lbs.

Note: Stretcher version recommended for high traffic use.

ANSI/BIFMA LEVEL® Furniture Sustainability Standard certified
Indoor Advantage™ certified

PLEASE SPECIFY THE FOLLOWING TO ORDER:

MODEL NUMBER	TEXTILES	FLAMMABILITY	SPECIES & FINISH	FINISH OPTION: STRETCHER
	Indicate fabric choice: <i>See options for fabrics at www.hbftextiles.com</i>	Indicate flammability: U = Cal 117	Options for wood finishes: AH = Ash 310 = Smoke Opaque 400 = Clear 402 = Black Opaque 403 = Grey Opaque 404 = Warm White Opaque 405 = Mist Opaque 406 = Denim Opaque 407 = Pewter Opaque 408 = Peppercorn Opaque 901 = Amber 902 = Designer White Opaque 911 = Warm Brick 929 = Nutmeg 937 = Bark 984 = Dark Roast 993 = Sumatra	BA = Brushed Aluminum BB = Brushed Brass +\$100

HGT115-101.Fabric.Flammability.Wood.Finish Example: HGT115-101.950-88.U.AH400.BA



List Prices

Sq.Ft. Yards Dimensions

Carlyle with Stretcher HGT115-121



COM/COL	2645	Grade G	2720	Leather I	3025	27	1½	OH	42¾	AH
Grade A	2610	Grade H	2745	Leather II	3145			OW	18¾	WBA
Grade B	2630	Grade J	2760	Leather III	3265			OD	20½	DED
Grade C	2645	Grade K	2795	Leather IV	3385			SH	31	DEW
Grade D	2660	Grade L	2845	Leather V	3505			SD	15¼	R
Grade E	2680	Grade M	2910	Leather VI	3625					
Grade F	2700									
								Shipping Weight		47
								Cube		28

Barstool - Ash Frame | Fully Upholstered Seat and Back | Aluminum Stretcher

Product rated at 350 lbs.

Note: Stretcher version recommended for high traffic use.

ANSI/BIFMA LEVEL® Furniture Sustainability Standard certified
Indoor Advantage™ certified

PLEASE SPECIFY THE FOLLOWING TO ORDER:

MODEL NUMBER	TEXTILES	FLAMMABILITY	SPECIES & FINISH	FINISH OPTION: STRETCHER
	Indicate fabric choice: <i>See options for fabrics at www.hbftextiles.com</i>	Indicate flammability: U = Cal 117	Options for wood finishes: AH = Ash 310 = Smoke Opaque 400 = Clear 402 = Black Opaque 403 = Grey Opaque 404 = Warm White Opaque 405 = Mist Opaque 406 = Denim Opaque 407 = Pewter Opaque 408 = Peppercorn Opaque 901 = Amber 902 = Designer White Opaque 911 = Warm Brick 929 = Nutmeg 937 = Bark 984 = Dark Roast 993 = Sumatra	BA = Brushed Aluminum BB = Brushed Brass +\$100

HGT115-121.Fabric.Flammability.Wood.Finish Example: HGT115-121.950-88.U.AH400.BA



Enpointe Specifications

Overview Counter Height | Bar Height | Wood Seat | Upholstered Seat

Metal Finish Powder Coat | Polished Chrome

Wood Seat Ash | Walnut

	List Price	Dimensions
Enpointe HGC517-011	1745	OH 24 AH OW 16 WBA OD 15½ DED SH 24 DEW SD 14 R
		Shipping Weight Cube

Counter Stool | Wood Seat | Metal Base | Ash Legs and Seat


ANSI/BIFMA LEVEL* Furniture Sustainability Standard certified
Indoor Advantage™ certified

PLEASE SPECIFY THE FOLLOWING TO ORDER:

MODEL NUMBER	BASE FINISH	SPECIES & FINISH
	Options for metal:	Options for wood finishes:
	BL = Black Powder Coat	AH = Ash
	WI = White Powder Coat	310 = Smoke Opaque
	LG = Light Grey Powder Coat	400 = Clear
	POL = Polished Chrome +\$200	402 = Black Opaque
		403 = Grey Opaque
		404 = Warm White Opaque
		405 = Mist Opaque
		406 = Denim Opaque
		407 = Pewter Opaque
		408 = Peppercorn Opaque
		901 = Amber
		902 = Designer White Opaque
		911 = Warm Brick
		929 = Nutmeg
		937 = Bark
		984 = Dark Roast
		993 = Sumatra
		Options for wood finishes:
		NT = Walnut +\$115
		310 = Smoke Opaque
		400 = Clear
		402 = Black Opaque
		403 = Grey Opaque
		404 = Warm White Opaque
		405 = Mist Opaque
		406 = Denim Opaque
		407 = Pewter Opaque
		408 = Peppercorn Opaque
		902 = Designer White Opaque
		911 = Warm Brick
		929 = Nutmeg
		937 = Bark
		984 = Dark Roast
		993 = Sumatra

HGC517-011.Base.Wood Example: HGC517-011.BL.AH310



	List Prices				Sq.Ft.	Yards	Dimensions			
Enpointe HGC517-031										
	COM/COL	1850	Grade G	1865	Leather I	1915	4½	¼	OH 24½	AH
	Grade A	1845	Grade H	1870	Leather II	1935			OW 16	WBA
	Grade B	1850	Grade J	1870	Leather III	1955			OD 15½	DED
	Grade C	1850	Grade K	1875	Leather IV	1975			SH 24½	DEW
	Grade D	1855	Grade L	1885	Leather V	1995			SD 14	R
	Grade E	1855	Grade M	1895	Leather VI	2015				
	Grade F	1860								
									Shipping Weight Cube	

Counter Stool | Upholstered Seat | Metal Base | Ash Legs

ANSI/BIFMA LEVEL® Furniture Sustainability Standard certified
Indoor Advantage™ certified

PLEASE SPECIFY THE FOLLOWING TO ORDER:

MODEL NUMBER	TEXTILES	FLAMMABILITY	BASE FINISH	SPECIES & FINISH
	Indicate fabric choice: <i>See options for fabrics at www.hbftextiles.com</i>	Indicate flammability: U = Cal 117	Options for metal: BL = Black Powder Coat WI = White Powder Coat LG = Light Grey Powder Coat POL = Polished Chrome +\$200	Options for wood finishes: AH = Ash 310 = Smoke Opaque 400 = Clear 402 = Black Opaque 403 = Grey Opaque 404 = Warm White Opaque 405 = Mist Opaque 406 = Denim Opaque 407 = Pewter Opaque 408 = Peppercorn Opaque 901 = Amber 902 = Designer White Opaque 911 = Warm Brick 929 = Nutmeg 937 = Bark 984 = Dark Roast 993 = Sumatra
				Options for wood finishes: NT = Walnut +\$115 310 = Smoke Opaque 400 = Clear 402 = Black Opaque 403 = Grey Opaque 404 = Warm White Opaque 405 = Mist Opaque 406 = Denim Opaque 407 = Pewter Opaque 408 = Peppercorn Opaque 902 = Designer White Opaque 911 = Warm Brick 929 = Nutmeg 937 = Bark 984 = Dark Roast 993 = Sumatra

HGC517-031.Fabric.Flammability.Base.Wood Example: HGC517-031.300-18.U.BL.AH310



List Price

Dimensions

Enpointe HGC517-021



1875

OH 30 AH
OW 18 WBA
OD 17 1/2 DED
SH 30 DEW
SD 14 R

Shipping Weight
Cube

Barstool | Wood Seat | Metal Base | Ash Legs and Seat

ANSI/BIFMA LEVEL® Furniture Sustainability Standard certified
Indoor Advantage™ certified

PLEASE SPECIFY THE FOLLOWING TO ORDER:

Table with 3 columns: MODEL NUMBER, BASE FINISH, SPECIES & FINISH. Includes options for metal, wood finishes, and walnut finishes.

HGC517-021.Base.Wood Example: HGC517-021.BL.AH310



List Prices

Sq.Ft. Yards Dimensions

Enpointe HGC517-041



COM/COL	2010	Grade G	2025	Leather I	2075	4½	¼	OH	30½	AH
Grade A	2005	Grade H	2030	Leather II	2095			OW	18	WBA
Grade B	2010	Grade J	2030	Leather III	2115			OD	17½	DED
Grade C	2010	Grade K	2035	Leather IV	2135			SH	30½	DEW
Grade D	2015	Grade L	2045	Leather V	2155			SD	14	R
Grade E	2015	Grade M	2055	Leather VI	2175			Shipping Weight		
Grade F	2020							Cube		

Barstool | Upholstered Seat | Metal Base | Ash Legs

ANSI/BIFMA LEVEL® Furniture Sustainability Standard certified
Indoor Advantage™ certified

PLEASE SPECIFY THE FOLLOWING TO ORDER:

MODEL NUMBER	TEXTILES	FLAMMABILITY	BASE FINISH	SPECIES & FINISH
	Indicate fabric choice: <i>See options for fabrics at www.hbftextiles.com</i>	Indicate flammability: U = Cal 117	Options for metal: BL = Black Powder Coat WI = White Powder Coat LG = Light Grey Powder Coat POL = Polished Chrome +\$200	Options for wood finishes: AH = Ash 310 = Smoke Opaque 400 = Clear 402 = Black Opaque 403 = Grey Opaque 404 = Warm White Opaque 405 = Mist Opaque 406 = Denim Opaque 407 = Pewter Opaque 408 = Peppercorn Opaque 901 = Amber 902 = Designer White Opaque 911 = Warm Brick 929 = Nutmeg 937 = Bark 984 = Dark Roast 993 = Sumatra
				Options for wood finishes: NT = Walnut +\$115 310 = Smoke Opaque 400 = Clear 402 = Black Opaque 403 = Grey Opaque 404 = Warm White Opaque 405 = Mist Opaque 406 = Denim Opaque 407 = Pewter Opaque 408 = Peppercorn Opaque 902 = Designer White Opaque 911 = Warm Brick 929 = Nutmeg 937 = Bark 984 = Dark Roast 993 = Sumatra

HGC517-041.Fabric.Flammability.Base.Wood Example: HGC517-041.300-18.U.BL.AH310



Essens Specifications

Overview Sculpted Wood Back | Sculpted Wood Seat | Upholstered Seat Pad
Metal Base | Standard Glide | Self-Return Swivel

Wood Oak | Walnut

Metal Powder Coat | Polished Chrome

	List Prices				Sq.Ft.	Yards	Dimensions			
Essens HGE117-011										
	COM/COL	1440	Grade G	1465	Leather I	1565	9	1/2	OH 24	AH
	Grade A	1425	Grade H	1470	Leather II	1605			OW 19 5/8	WBA
	Grade B	1435	Grade J	1475	Leather III	1645			OD 19 5/8	DED
	Grade C	1440	Grade K	1490	Leather IV	1685			SH 24	DEW
	Grade D	1445	Grade L	1505	Leather V	1725			SD 15	R
	Grade E	1450	Grade M	1525	Leather VI	1765				
	Grade F	1455								
										Shipping Weight Cube

Counter Stool | Oak Seat with Upholstered Seat Pad | Tube Base | Standard Glides


ANSI/BIFMA LEVEL® Furniture Sustainability Standard certified
Indoor Advantage™ certified

PLEASE SPECIFY THE FOLLOWING TO ORDER: _____

MODEL NUMBER	TEXTILES	FLAMMABILITY	BASE FINISH	SPECIES & FINISH	
	Indicate fabric choice: <i>See options for fabrics at www.hbftextiles.com</i>	Indicate flammability: U = Cal 117	Options for metal: BL = Black Powder Coat WI = White Powder Coat LG = Light Grey Powder Coat POL = Polished Chrome +\$190	Options for wood finishes: RK = Oak 310 = Smoke Opaque 400 = Clear 402 = Black Opaque 403 = Grey Opaque 404 = Warm White Opaque 405 = Mist Opaque 406 = Denim Opaque 407 = Pewter Opaque 408 = Peppercorn Opaque 901 = Amber 902 = Designer White Opaque 911 = Warm Brick 929 = Nutmeg 937 = Bark 984 = Dark Roast 993 = Sumatra	Options for wood finishes: NT = Walnut +\$125 310 = Smoke Opaque 400 = Clear 402 = Black Opaque 403 = Grey Opaque 404 = Warm White Opaque 405 = Mist Opaque 406 = Denim Opaque 407 = Pewter Opaque 408 = Peppercorn Opaque 902 = Designer White Opaque 911 = Warm Brick 929 = Nutmeg 937 = Bark 984 = Dark Roast 993 = Sumatra

HGE117-011.Fabric.Flammability.Base.Wood Example: HGE117-011.300-18.U.BL.RK310



	List Prices				Sq.Ft.	Yards	Dimensions					
Essens HGE117-031												
	COM/COL	2160	Grade G	2185	Leather I	2285	9	½	OH	34¾	AH	31½
	Grade A	2145	Grade H	2190	Leather II	2325			OW	21⅞	WBA	19⅞
	Grade B	2155	Grade J	2195	Leather III	2365			OD	18	DED	
	Grade C	2160	Grade K	2210	Leather IV	2405			SH	24	DEW	
	Grade D	2165	Grade L	2225	Leather V	2445			SD	15	R	
	Grade E	2170	Grade M	2245	Leather VI	2485						
	Grade F	2175										
									Shipping Weight Cube			

Counter Stool | Oak Back, Seat, and Arms | Upholstered Seat Pad | Tube Base | Standard Glides

ANSI/BIFMA LEVEL® Furniture Sustainability Standard certified
Indoor Advantage™ certified

PLEASE SPECIFY THE FOLLOWING TO ORDER: _____

MODEL NUMBER	TEXTILES	FLAMMABILITY	BASE FINISH	SPECIES & FINISH
	Indicate fabric choice: <i>See options for fabrics at www.hbftextiles.com</i>	Indicate flammability: U = Cal 117	Options for metal: BL = Black Powder Coat WI = White Powder Coat LG = Light Grey Powder Coat POL = Polished Chrome +\$335	Options for wood finishes: RK = Oak 310 = Smoke Opaque 400 = Clear 402 = Black Opaque 403 = Grey Opaque 404 = Warm White Opaque 405 = Mist Opaque 406 = Denim Opaque 407 = Pewter Opaque 408 = Peppercorn Opaque 901 = Amber 902 = Designer White Opaque 911 = Warm Brick 929 = Nutmeg 937 = Bark 984 = Dark Roast 993 = Sumatra
				Options for wood finishes: NT = Walnut +\$355 310 = Smoke Opaque 400 = Clear 402 = Black Opaque 403 = Grey Opaque 404 = Warm White Opaque 405 = Mist Opaque 406 = Denim Opaque 407 = Pewter Opaque 408 = Peppercorn Opaque 902 = Designer White Opaque 911 = Warm Brick 929 = Nutmeg 937 = Bark 984 = Dark Roast 993 = Sumatra

HGE117-031.Fabric.Flammability.Base.Wood Example: HGE117-031.300-18.U.BL.RK310



List Prices

Sq.Ft. Yards Dimensions

Essens HGE119-141



COM/COL	1770	Grade G	1795	Leather I	1895	9	1/2	OH	24	AH
Grade A	1755	Grade H	1800	Leather II	1935			OW	19 3/8	WBA
Grade B	1765	Grade J	1805	Leather III	1975			OD	19 3/8	DED
Grade C	1770	Grade K	1820	Leather IV	2015			SH	24	DEW
Grade D	1775	Grade L	1835	Leather V	2055			SD	15	R
Grade E	1780	Grade M	1855	Leather VI	2095					
Grade F	1785									

Shipping Weight
Cube

Counter Stool | Oak Seat with Upholstered Seat Pad | Tube Base with Self-Return Swivel | Standard Glides


ANSI/BIFMA LEVEL® Furniture Sustainability Standard certified
Indoor Advantage™ certified

PLEASE SPECIFY THE FOLLOWING TO ORDER:

MODEL NUMBER	TEXTILES	FLAMMABILITY	BASE FINISH	SPECIES & FINISH
	Indicate fabric choice: <i>See options for fabrics at www.hbftextiles.com</i>	Indicate flammability: U = Cal 117	Options for metal: BL = Black Powder Coat WI = White Powder Coat LG = Light Grey Powder Coat POL = Polished Chrome +\$190	Options for wood finishes: RK = Oak 310 = Smoke Opaque 400 = Clear 402 = Black Opaque 403 = Grey Opaque 404 = Warm White Opaque 405 = Mist Opaque 406 = Denim Opaque 407 = Pewter Opaque 408 = Peppercorn Opaque 901 = Amber 902 = Designer White Opaque 911 = Warm Brick 929 = Nutmeg 937 = Bark 984 = Dark Roast 993 = Sumatra
				Options for wood finishes: NT = Walnut +\$125 310 = Smoke Opaque 400 = Clear 402 = Black Opaque 403 = Grey Opaque 404 = Warm White Opaque 405 = Mist Opaque 406 = Denim Opaque 407 = Pewter Opaque 408 = Peppercorn Opaque 902 = Designer White Opaque 911 = Warm Brick 929 = Nutmeg 937 = Bark 984 = Dark Roast 993 = Sumatra

HGE119-141.Fabric.Flammability.Base.Wood Example: HGE119-141.300-18.U.BL.RK310



	List Prices				Sq.Ft.	Yards	Dimensions					
Essens HGE119-161												
	COM/COL	2480	Grade G	2505	Leather I	2605	9	½	OH	34¾	AH	31½
	Grade A	2465	Grade H	2510	Leather II	2645			OW	21⅞	WBA	19⅞
	Grade B	2475	Grade J	2515	Leather III	2685			OD	18	DED	
	Grade C	2480	Grade K	2530	Leather IV	2725			SH	24	DEW	
	Grade D	2485	Grade L	2545	Leather V	2765			SD	15	R	
	Grade E	2490	Grade M	2565	Leather VI	2805						
	Grade F	2495										
									Shipping Weight Cube			

Counter Stool | Oak Back, Seat, and Arms | Upholstered Seat Pad | Tube Base with Self-Return Swivel | Standard Glides


ANSI/BIFMA LEVEL® Furniture Sustainability Standard certified
Indoor Advantage™ certified

PLEASE SPECIFY THE FOLLOWING TO ORDER:

MODEL NUMBER	TEXTILES	FLAMMABILITY	BASE FINISH	SPECIES & FINISH
	Indicate fabric choice: <i>See options for fabrics at www.hbftextiles.com</i>	Indicate flammability: U = Cal 117	Options for metal: BL = Black Powder Coat WI = White Powder Coat LG = Light Grey Powder Coat POL = Polished Chrome +\$335	Options for wood finishes: Options for wood finishes: RK = Oak NT = Walnut +\$355 310 = Smoke Opaque 400 = Clear 402 = Black Opaque 403 = Grey Opaque 404 = Warm White Opaque 405 = Mist Opaque 406 = Denim Opaque 407 = Pewter Opaque 408 = Peppercorn Opaque 901 = Amber 902 = Designer White Opaque 911 = Warm Brick 929 = Nutmeg 937 = Bark 984 = Dark Roast 993 = Sumatra 310 = Smoke Opaque 400 = Clear 402 = Black Opaque 403 = Grey Opaque 404 = Warm White Opaque 405 = Mist Opaque 406 = Denim Opaque 407 = Pewter Opaque 408 = Peppercorn Opaque 902 = Designer White Opaque 911 = Warm Brick 929 = Nutmeg 937 = Bark 984 = Dark Roast 993 = Sumatra

HGE119-161.Fabric.Flammability.Base.Wood Example: HGE119-161.300-18.U.BL.RK310



	List Prices				Sq.Ft.	Yards	Dimensions			
Essens HGE117-021										
	COM/COL	1460	Grade G	1485	Leather I	1585	9	1/2	OH 30	AH
	Grade A	1445	Grade H	1490	Leather II	1625			OW 19 3/8	WBA
	Grade B	1455	Grade J	1495	Leather III	1665			OD 19 3/8	DED
	Grade C	1460	Grade K	1510	Leather IV	1705			SH 30	DEW
	Grade D	1465	Grade L	1525	Leather V	1745			SD 15	R
	Grade E	1470	Grade M	1545	Leather VI	1785				
	Grade F	1475								
									Shipping Weight Cube	

Barstool | Oak Seat with Upholstered Seat Pad | Tube Base | Standard Glides

ANSI/BIFMA LEVEL® Furniture Sustainability Standard certified
Indoor Advantage™ certified

PLEASE SPECIFY THE FOLLOWING TO ORDER:

MODEL NUMBER	TEXTILES	FLAMMABILITY	BASE FINISH	SPECIES & FINISH
	Indicate fabric choice: <i>See options for fabrics at www.hbftextiles.com</i>	Indicate flammability: U = Cal 117	Options for metal: BL = Black Powder Coat WI = White Powder Coat LG = Light Grey Powder Coat POL = Polished Chrome +\$190	Options for wood finishes: RK = Oak 310 = Smoke Opaque 400 = Clear 402 = Black Opaque 403 = Grey Opaque 404 = Warm White Opaque 405 = Mist Opaque 406 = Denim Opaque 407 = Pewter Opaque 408 = Peppercorn Opaque 901 = Amber 902 = Designer White Opaque 911 = Warm Brick 929 = Nutmeg 937 = Bark 984 = Dark Roast 993 = Sumatra
				Options for wood finishes: NT = Walnut +\$125 310 = Smoke Opaque 400 = Clear 402 = Black Opaque 403 = Grey Opaque 404 = Warm White Opaque 405 = Mist Opaque 406 = Denim Opaque 407 = Pewter Opaque 408 = Peppercorn Opaque 902 = Designer White Opaque 911 = Warm Brick 929 = Nutmeg 937 = Bark 984 = Dark Roast 993 = Sumatra

HGE117-021.Fabric.Flammability.Base.Wood Example: HGE117-021.300-18.U.BL.RK310



	List Prices		Sq.Ft.	Yards	Dimensions
--	-------------	--	--------	-------	------------

Essens HGE117-041



COM/COL	2185	Grade G	2210	Leather I	2310	9	½	OH	40¾	AH	37½
Grade A	2170	Grade H	2215	Leather II	2350			OW	21⅞	WBA	19⅞
Grade B	2180	Grade J	2220	Leather III	2390			OD	18	DED	
Grade C	2185	Grade K	2235	Leather IV	2430			SH	30	DEW	
Grade D	2190	Grade L	2250	Leather V	2470			SD	15	R	
Grade E	2195	Grade M	2270	Leather VI	2510						
Grade F	2200										

Shipping Weight
Cube

Barstool | Oak Back, Seat, and Arms | Upholstered Seat Pad | Tube Base | Standard Glides


ANSI/BIFMA LEVEL® Furniture Sustainability Standard certified
Indoor Advantage™ certified

PLEASE SPECIFY THE FOLLOWING TO ORDER:

MODEL NUMBER	TEXTILES	FLAMMABILITY	BASE FINISH	SPECIES & FINISH
	Indicate fabric choice: <i>See options for fabrics at www.hbftextiles.com</i>	Indicate flammability: U = Cal 117	Options for metal: BL = Black Powder Coat WI = White Powder Coat LG = Light Grey Powder Coat POL = Polished Chrome +\$335	Options for wood finishes: RK = Oak 310 = Smoke Opaque 400 = Clear 402 = Black Opaque 403 = Grey Opaque 404 = Warm White Opaque 405 = Mist Opaque 406 = Denim Opaque 407 = Pewter Opaque 408 = Peppercorn Opaque 901 = Amber 902 = Designer White Opaque 911 = Warm Brick 929 = Nutmeg 937 = Bark 984 = Dark Roast 993 = Sumatra
				Options for wood finishes: NT = Walnut +\$355 310 = Smoke Opaque 400 = Clear 402 = Black Opaque 403 = Grey Opaque 404 = Warm White Opaque 405 = Mist Opaque 406 = Denim Opaque 407 = Pewter Opaque 408 = Peppercorn Opaque 902 = Designer White Opaque 911 = Warm Brick 929 = Nutmeg 937 = Bark 984 = Dark Roast 993 = Sumatra

HGE117-041.Fabric.Flammability.Base.Wood Example: HGE117-041.300-18.U.BL.RK310



	List Prices			Sq.Ft.	Yards	Dimensions				
Essens HGE119-151										
	COM/COL	1785	Grade G	1810	Leather I	1910	9	1/2	OH 30	AH
	Grade A	1770	Grade H	1815	Leather II	1950			OW 19 3/8	WBA
	Grade B	1780	Grade J	1820	Leather III	1990			OD 19 3/8	DED
	Grade C	1785	Grade K	1835	Leather IV	2030			SH 30	DEW
	Grade D	1790	Grade L	1850	Leather V	2070			SD 15	R
	Grade E	1795	Grade M	1870	Leather VI	2110				
	Grade F	1800								
									Shipping Weight Cube	

Barstool | Oak Seat with Upholstered Seat Pad | Tube Base with Self-Return Swivel | Standard Glides


ANSI/BIFMA LEVEL® Furniture Sustainability Standard certified
Indoor Advantage™ certified

PLEASE SPECIFY THE FOLLOWING TO ORDER:

MODEL NUMBER	TEXTILES	FLAMMABILITY	BASE FINISH	SPECIES & FINISH
	Indicate fabric choice: <i>See options for fabrics at www.hbftextiles.com</i>	Indicate flammability: U = Cal 117	Options for metal: BL = Black Powder Coat WI = White Powder Coat LG = Light Grey Powder Coat POL = Polished Chrome +\$190	Options for wood finishes: RK = Oak 310 = Smoke Opaque 400 = Clear 402 = Black Opaque 403 = Grey Opaque 404 = Warm White Opaque 405 = Mist Opaque 406 = Denim Opaque 407 = Pewter Opaque 408 = Peppercorn Opaque 901 = Amber 902 = Designer White Opaque 911 = Warm Brick 929 = Nutmeg 937 = Bark 984 = Dark Roast 993 = Sumatra
				Options for wood finishes: NT = Walnut +\$125 310 = Smoke Opaque 400 = Clear 402 = Black Opaque 403 = Grey Opaque 404 = Warm White Opaque 405 = Mist Opaque 406 = Denim Opaque 407 = Pewter Opaque 408 = Peppercorn Opaque 902 = Designer White Opaque 911 = Warm Brick 929 = Nutmeg 937 = Bark 984 = Dark Roast 993 = Sumatra

HGE119-151.Fabric.Flammability.Base.Wood Example: HGE119-151.300-18.U.BL.RK310



	List Prices			Sq.Ft.	Yards	Dimensions						
Essens HGE119-171												
	COM/COL	2510	Grade G	2535	Leather I	2675	9	½	OH	40¾	AH	37½
	Grade A	2495	Grade H	2540	Leather II	2715			OW	21⅞	WBA	19⅞
	Grade B	2505	Grade J	2560	Leather III	2755			OD	18	DED	
	Grade C	2510	Grade K	2575	Leather IV	2795			SH	30	DEW	
	Grade D	2515	Grade L	2595	Leather V	2835			SD	15	R	
	Grade E	2520	Grade M	2635	Leather VI							
	Grade F	2525										
									Shipping Weight			
									Cube			

Barstool | Oak Back, Seat, and Arms | Upholstered Seat Pad | Tube Base with Self-Return Swivel | Standard Glides

ANSI/BIFMA LEVEL® Furniture Sustainability Standard certified
Indoor Advantage™ certified

PLEASE SPECIFY THE FOLLOWING TO ORDER:

MODEL NUMBER	TEXTILES	FLAMMABILITY	BASE FINISH	SPECIES & FINISH
	Indicate fabric choice: <i>See options for fabrics at www.hbftextiles.com</i>	Indicate flammability: U = Cal 117	Options for metal: BL = Black Powder Coat WI = White Powder Coat LG = Light Grey Powder Coat POL = Polished Chrome +\$335	Options for wood finishes: RK = Oak 310 = Smoke Opaque 400 = Clear 402 = Black Opaque 403 = Grey Opaque 404 = Warm White Opaque 405 = Mist Opaque 406 = Denim Opaque 407 = Pewter Opaque 408 = Peppercorn Opaque 901 = Amber 902 = Designer White Opaque 911 = Warm Brick 929 = Nutmeg 937 = Bark 984 = Dark Roast 993 = Sumatra
				Options for wood finishes: NT = Walnut +\$355 310 = Smoke Opaque 400 = Clear 402 = Black Opaque 403 = Grey Opaque 404 = Warm White Opaque 405 = Mist Opaque 406 = Denim Opaque 407 = Pewter Opaque 408 = Peppercorn Opaque 902 = Designer White Opaque 911 = Warm Brick 929 = Nutmeg 937 = Bark 984 = Dark Roast 993 = Sumatra

HGE119-171.Fabric.Flammability.Base.Wood Example: HGE119-171.300-18.U.BL.RK310



Gubi® Beetle Specifications

Overview Plastic outer shell | Plastic seat and back | Upholstered seat | Upholstered seat and back | Metal base

Shell Available in 4 different colors



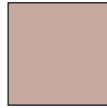
Green



Black



White



Sweet Pink

Base Black Powder Coat Metal | Brass

List Price

Dimensions

Gubi® Beetle HGG217-041

855



OH 42½ AH
OW 22¼ WBA
OD 21½ DED
SH 27 DEW
SD 17¾ R

Shipping Weight
Cube

Counter Stool | Plastic Shell | Metal Base

Product rated at 225 lbs.

Indoor Advantage™ certified

PLEASE SPECIFY THE FOLLOWING TO ORDER: _____

MODEL NUMBER	BASE FINISH	SHELL COLOR
	Options for metal finish: BL = Black Powder Coat BRS = Brass +\$115	Options for plastic shell: GGRN = Green BL = Black GWHT = White SPNK = Sweet Pink

HGG217-041.Base.ShellColor Example: HGG217-041.BRS.GGRN



	List Prices		Sq.Ft.	Yards	Dimensions
--	-------------	--	--------	-------	------------

Gubi® Beetle HGG217-051



COM/COL	1435	Grade G	1460	Leather I	1560	9	½	OH	42½	AH
Grade A	1420	Grade H	1465	Leather II	1600			OW	22¼	WBA
Grade B	1430	Grade J	1470	Leather III	1640			OD	21½	DED
Grade C	1435	Grade K	1485	Leather IV	1680			SH	28	DEW
Grade D	1440	Grade L	1500	Leather V	1720			SD	17¾	R
Grade E	1445	Grade M	1520	Leather VI	1760					
Grade F	1450									

Shipping Weight
Cube

Upholstery Requires:

Fabric: ½ Yard

Leather: 9 Square Feet

Counter Stool | Plastic Back | Upholstered Seat | Metal Base

Product rated at 225 lbs.

Indoor Advantage™ Certified

Discontinued

PLEASE SPECIFY THE FOLLOWING TO ORDER:

MODEL NUMBER	TEXTILES	FLAMMABILITY	BASE FINISH	SHELL COLOR
	Indicate fabric choice for seat: <i>See options for fabrics at www.hbf textiles.com</i>	Indicate flammability: U = Cal 117	Options for metal finish: BL = Black Powder Coat BRS = Brass +\$115	Options for plastic shell: GGRN = Green BL = Black GWHT = White SPNK = Sweet Pink

HGG217-051.Fabric.Flammability.Base.ShellColor Example: HGG217-051.300-18.U.BRS.GGRN



Dimensions

Gubi® Beetle HGG217-061



OH	42½	AH
OW	22¼	WBA
OD	21½	DED
SH	28	DEW
SD	16¾	R

Shipping Weight
Cube

Counter Stool | Plastic Shell | Upholstered Seat and Inside Back | Metal Base

Product rated at 225 lbs.

Indoor Advantage™ certified

Pricing for Single Fabric Placement:

Pricing for Multiple Fabric Placement:
(To Calculate, Begin with Base Price and add Upcharges)

Base Price: 1610

Upholstery:

COM/COL	1695
Grade A	1665
Grade B	1685
Grade C	1695
Grade D	1705
Grade E	1715
Grade F	1725
Grade G	1745
Grade H	1755
Grade J	1765
Grade K	1795
Grade L	1825
Grade M	1865
Leather I	1945
Leather II	2025
Leather III	2105
Leather IV	2185
Leather V	2265
Leather VI	2345

Back Upholstery:

COM/COL	20
Grade A	5
Grade B	15
Grade C	20
Grade D	25
Grade E	30
Grade F	35
Grade G	45
Grade H	50
Grade J	55
Grade K	70
Grade L	85
Grade M	105
Leather I	145
Leather II	185
Leather III	225
Leather IV	265
Leather V	305
Leather VI	345

Seat Upholstery:

COM/COL	20
Grade A	5
Grade B	15
Grade C	20
Grade D	25
Grade E	30
Grade F	35
Grade G	45
Grade H	50
Grade J	55
Grade K	70
Grade L	85
Grade M	105
Leather I	145
Leather II	185
Leather III	225
Leather IV	265
Leather V	305
Leather VI	345

Upholstery Requires:

Fabric: 1 Yard
Leather: 18 Sq. Ft.

Upholstery Requires (Per Application):

Fabric: ½ Yard
Leather: 9 Sq. Ft.

Upholstery Requires (Per Application):

Fabric: ½ Yard
Leather: 9 Sq. Ft.

Total Required

Upholstery: Fabric: 1 Yard
Leather: 18 Sq. Ft.

PLEASE SPECIFY THE FOLLOWING TO ORDER:

<p>MODEL NUMBER</p>	<p>TEXTILES: BACK</p> <p>Indicate fabric choice for back:</p> <p><i>See options for fabrics at www.hbftextiles.com</i></p>	<p>TEXTILES: SEAT</p> <p>Indicate fabric choice for seat:</p> <p><i>See options for fabrics at www.hbftextiles.com</i></p>	<p>FLAMMABILITY</p> <p>Indicate flammability:</p> <p>U = Cal 117</p>	<p>BASE FINISH</p> <p>Options for metal finish:</p> <p>BL = Black Powder Coat BRS = Brass +\$115</p>	<p>SHELL COLOR</p> <p>Options for plastic shell:</p> <p>GGRN = Green BL = Black GWHT = White SPNK = Sweet Pink</p>
---------------------	---	---	---	--	--

HGG217-061.FabricBack.FabricSeat.Flammability.Base.ShellColor Example: HGG217-061.300-18.300-18.U.BRS.GGRN



List Price

Dimensions

Gubi® Beetle HGG217-071

1180



OH 46½ AH
OW 22¼ WBA
OD 21½ DED
SH 31 DEW
SD 17¾ R

Shipping Weight
Cube

Barstool | Plastic Shell | Metal Base

Product rated at 225 lbs.

Indoor Advantage™ certified

Discontinued

PLEASE SPECIFY THE FOLLOWING TO ORDER: _____

MODEL NUMBER	BASE FINISH	SHELL COLOR
	Options for metal finish: BL = Black Powder Coat BRS = Brass +\$140	Options for plastic shell: GGRN = Green BL = Black GWHT = White SPNK = Sweet Pink

HGG217-071.Base.ShellColor Example: HGG217-071.BRS.GGRN



	List Prices		Sq.Ft.	Yards	Dimensions
--	-------------	--	--------	-------	------------

Gubi® Beetle HGG217-081



COM/COL	1490	Grade G	1515	Leather I	1615	9	½	OH	46½	AH
Grade A	1475	Grade H	1520	Leather II	1655			OW	22¼	WBA
Grade B	1485	Grade J	1525	Leather III	1695			OD	21½	DED
Grade C	1490	Grade K	1540	Leather IV	1735			SH	32	DEW
Grade D	1495	Grade L	1555	Leather V	1775			SD	17¾	R
Grade E	1500	Grade M	1575	Leather VI	1815					
Grade F	1505									

Shipping Weight
Cube

Upholstery Requires:
Fabric: ½ Yard
Leather: 9 Square Feet

Barstool | Plastic Back | Upholstered Seat | Metal Base

Product rated at 225 lbs.

Indoor Advantage™ certified

Discontinued

PLEASE SPECIFY THE FOLLOWING TO ORDER:

MODEL NUMBER	TEXTILES	FLAMMABILITY	BASE FINISH	SHELL COLOR
	Indicate fabric choice for seat: <i>See options for fabrics at www.hbftextiles.com</i>	Indicate flammability: U = Cal 117	Options for metal finish: BL = Black Powder Coat BRS = Brass +\$140	Options for plastic shell: GGRN = Green BL = Black GWHT = White SPNK = Sweet Pink

HGG217-081.FabricSeat.Flammability.Base.ShellColor Example: HGG217-081.300-18.U.BRS.GGRN



Dimensions

Gubi® Beetle HGG217-091



OH	46½	AH
OW	22¼	WBA
OD	21½	DED
SH	32	DEW
SD	16¾	R

Shipping Weight
Cube

Barstool | Plastic Shell | Upholstered Seat and Inside Back | Metal Base

Product rated at 225 lbs.

Indoor Advantage™ certified

Pricing for Single Fabric Placement:

Pricing for Multiple Fabric Placement:
(To Calculate, Begin with Base Price and add Upcharges)

Base Price: 1720

Upholstery:

COM/COL	1760
Grade A	1730
Grade B	1750
Grade C	1760
Grade D	1770
Grade E	1780
Grade F	1790
Grade G	1810
Grade H	1820
Grade J	1830
Grade K	1860
Grade L	1890
Grade M	1930
Leather I	2010
Leather II	2090
Leather III	2170
Leather IV	2250
Leather V	2330
Leather VI	2410

Back Upholstery:

COM/COL	20
Grade A	5
Grade B	15
Grade C	20
Grade D	25
Grade E	30
Grade F	35
Grade G	45
Grade H	50
Grade J	55
Grade K	70
Grade L	85
Grade M	105
Leather I	145
Leather II	185
Leather III	225
Leather IV	265
Leather V	305
Leather VI	345

Seat Upholstery:

COM/COL	20
Grade A	5
Grade B	15
Grade C	20
Grade D	25
Grade E	30
Grade F	35
Grade G	45
Grade H	50
Grade J	55
Grade K	70
Grade L	85
Grade M	105
Leather I	145
Leather II	185
Leather III	225
Leather IV	265
Leather V	305
Leather VI	345

Upholstery Requires:

Fabric: 1 Yard
Leather: 18 Sq. Ft.

Upholstery Requires (Per Application):

Fabric: ½ Yard
Leather: 9 Sq. Ft.

Upholstery Requires (Per Application):

Fabric: ½ Yard
Leather: 9 Sq. Ft.

Total Required

Upholstery: Fabric: 1 Yard
Leather: 18 Sq. Ft.

PLEASE SPECIFY THE FOLLOWING TO ORDER:

<p>MODEL NUMBER</p>	<p>TEXTILES: BACK</p> <p>Indicate fabric choice for back:</p> <p><i>See options for fabrics at www.hbftextiles.com</i></p>	<p>TEXTILES: SEAT</p> <p>Indicate fabric choice for seat:</p> <p><i>See options for fabrics at www.hbftextiles.com</i></p>	<p>FLAMMABILITY</p> <p>Indicate flammability:</p> <p>U = Cal 117</p>	<p>BASE FINISH</p> <p>Options for metal finish:</p> <p>BL = Black Powder Coat BRS = Brass +\$140</p>	<p>SHELL COLOR</p> <p>Options for plastic shell:</p> <p>GGRN = Green BL = Black GWHT = White SPNK = Sweet Pink</p>
----------------------------	--	--	--	---	---

HGG217-091.FabricSeat.FabricBack.Flammability.Base.ShellColor

Example: HGG217-091.300-18.300-18.U.BRS.GGRN



Jueki Specifications

Overview	Sculpted Wood Seat Three Heights available: 18", 24", 30"
Wood Options	Frame available in Ash. Refer to HBF Ash finishes for color selection.
Ring Options	Black Powder Coat Light Grey Powder Coat White Powder Coat Polished Chrome



List Price

Dimensions

Jueki HGR120-011



1985

OH 18 AH
OW 16 3/8 WBA
OD 13 3/8 DED
SH 18 DEW
SD 12 3/4 R

Shipping Weight 16
Cube 8.2

Low Stool | Ash

ANSI/BIFMA LEVEL® Furniture Sustainability Standard certified
Indoor Advantage™ certified

PLEASE SPECIFY THE FOLLOWING TO ORDER:

MODEL NUMBER

SPECIES & FINISH

Options for wood finishes:
AH = Ash

- 310 = Smoke Opaque
- 400 = Clear
- 402 = Black Opaque
- 403 = Grey Opaque
- 404 = Warm White Opaque
- 405 = Mist Opaque
- 406 = Denim Opaque
- 407 = Pewter Opaque
- 408 = Peppercorn Opaque
- 901 = Amber
- 902 = Designer White Opaque
- 911 = Warm Brick
- 929 = Nutmeg
- 937 = Bark
- 984 = Dark Roast
- 993 = Sumatra

HGR120-011.Wood Example: HGR120-011.AH400



List Price

Dimensions

Jueki HGR120-021



2210

OH 24 AH
OW 18 WBA
OD 14 DED
SH 24 DEW
SD 12¾ R

Shipping Weight 20
Cube 8.2

Counter Stool | Ash | Black Powder Coat Ring

ANSI/BIFMA LEVEL® Furniture Sustainability Standard certified
Indoor Advantage™ certified

PLEASE SPECIFY THE FOLLOWING TO ORDER:

MODEL NUMBER	SPECIES & FINISH	RING FINISH
	Options for wood finishes: AH = Ash	Options for metal:
	310 = Smoke Opaque	BL = Black Powder Coat
	400 = Clear	WI = White Powder Coat
	402 = Black Opaque	LG = Light Grey Powder Coat
	403 = Grey Opaque	POL = Polished Chrome +\$100
	404 = Warm White Opaque	
	405 = Mist Opaque	
	406 = Denim Opaque	
	407 = Pewter Opaque	
	408 = Peppercorn Opaque	
	901 = Amber	
	902 = Designer White Opaque	
	911 = Warm Brick	
	929 = Nutmeg	
	937 = Bark	
	984 = Dark Roast	
	993 = Sumatra	

HGR120-021.Wood.Ring Example: HGR120-021.AH400.LG



List Price

Dimensions

Jueki HGR120-031



2435

OH 30 AH
OW 18 WBA
OD 14 3/8 DED
SH 30 DEW
SD 12 3/4 R

Shipping Weight 25
Cube 24.4

Barstool | Ash | Black Powder Coat Ring

PLEASE SPECIFY THE FOLLOWING TO ORDER:

MODEL NUMBER	SPECIES & FINISH	RING FINISH
	Options for wood finishes: AH = Ash	Options for metal:
	310 = Smoke Opaque	BL = Black Powder Coat
	400 = Clear	WI = White Powder Coat
	402 = Black Opaque	LG = Light Grey Powder Coat
	403 = Grey Opaque	POL = Polished Chrome +\$100
	404 = Warm White Opaque	
	405 = Mist Opaque	
	406 = Denim Opaque	
	407 = Pewter Opaque	
	408 = Peppercorn Opaque	
	901 = Amber	
	902 = Designer White Opaque	
	911 = Warm Brick	
	929 = Nutmeg	
	937 = Bark	
	984 = Dark Roast	
	993 = Sumatra	

HGR120-031.Wood.Ring Example: HGR120-031.AH400.LG