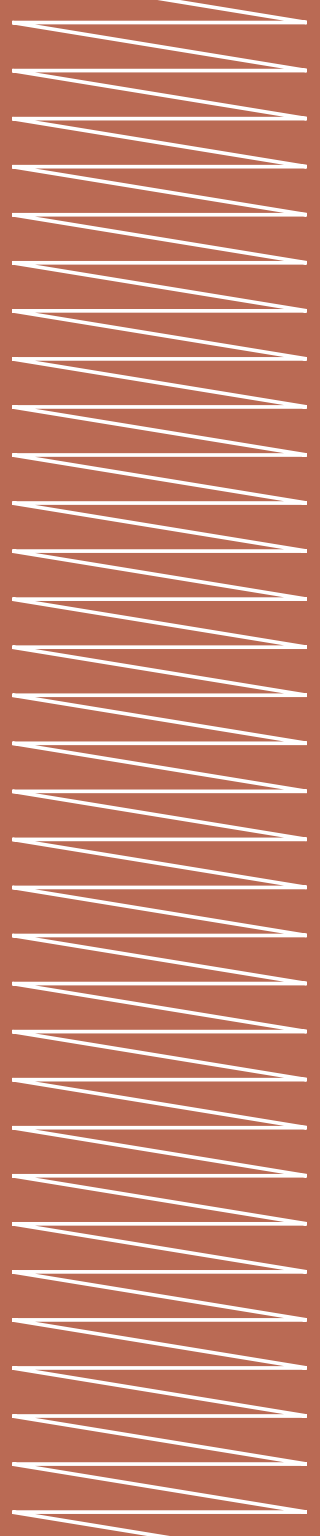


HBF
TEXTILES



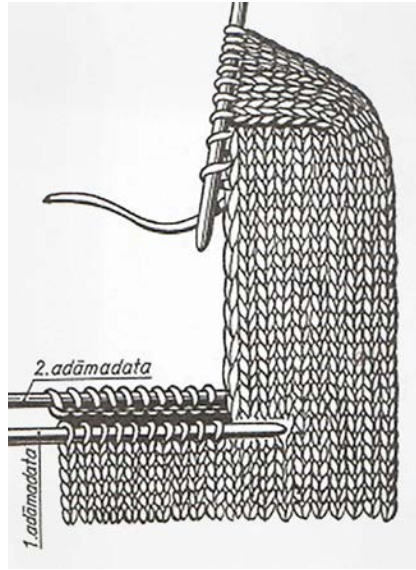
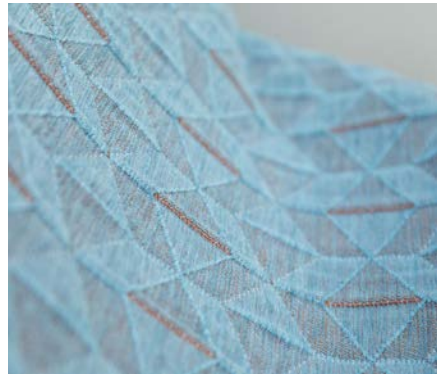
**Lost &
Found**

**Designed by
Christiane
Müller**



The Lost & Found collection re-examines the rich world of textiles, reinterprets their techniques, reconnects us with their history, reflects on their meaning, reinforces their functionality, renews their significance, reaffirms their value, and rediscovers their timeless beauty. What is almost lost is found again.

– **Christiane Müller**



Crafted Felt

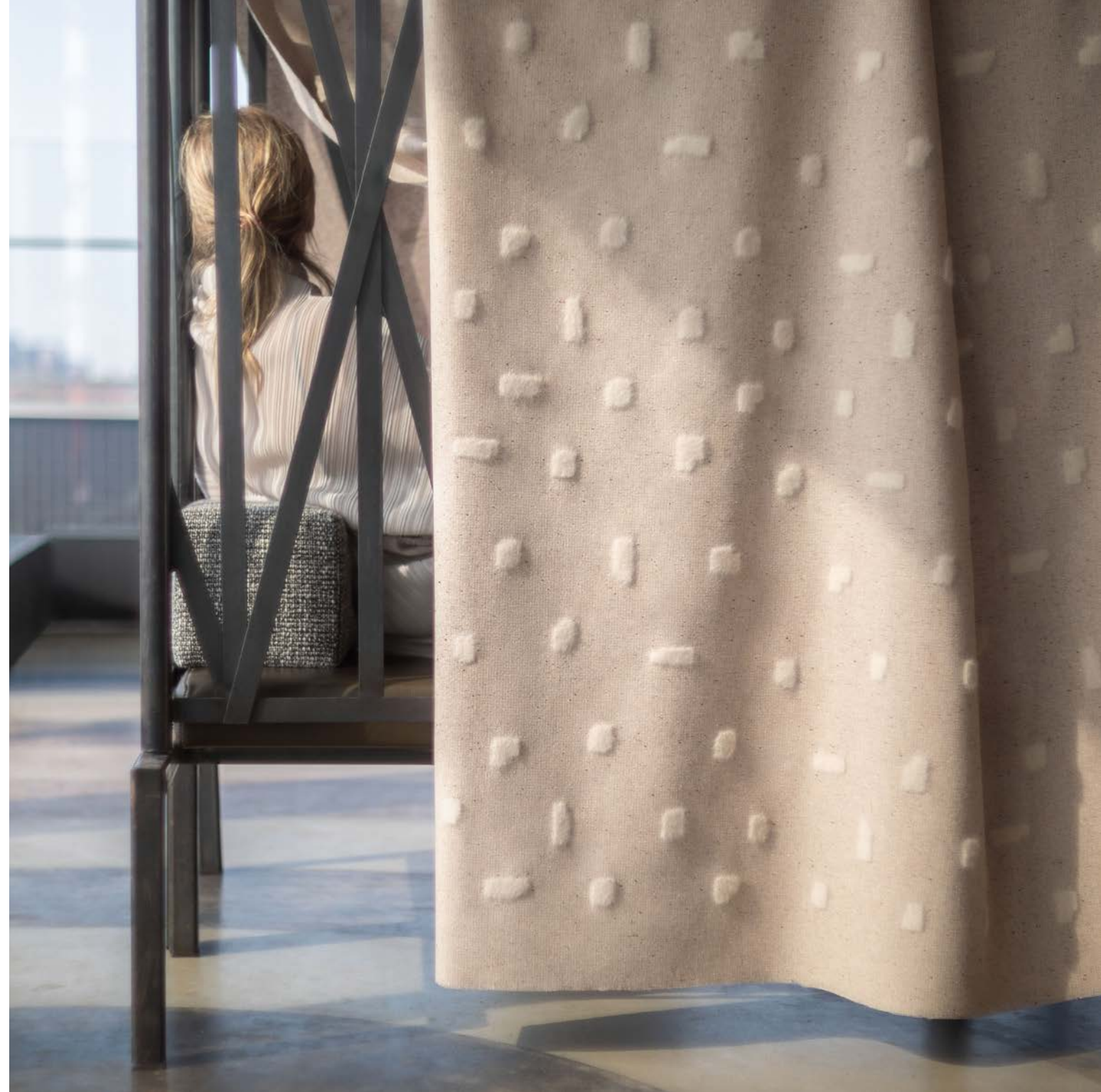
Decades ago, women in the villages joined together to felt cloth, singing their songs in the rhythm of the movement of the fabrics. The sound recording of the producer Lomax is a beautiful inspiring documentation of this music.





Crafted Cloud

I was always fascinated by the beauty of assembling, repairing and mending of textiles. In the Japanese tradition, the technique of Boro gave the poor farmer and fisherman the option to extend the life of their clothing. In Crafted Cloud, the patchwork of stitches not only generates a longer lasting fabric but also tells the story of the owner.





Woven Memory

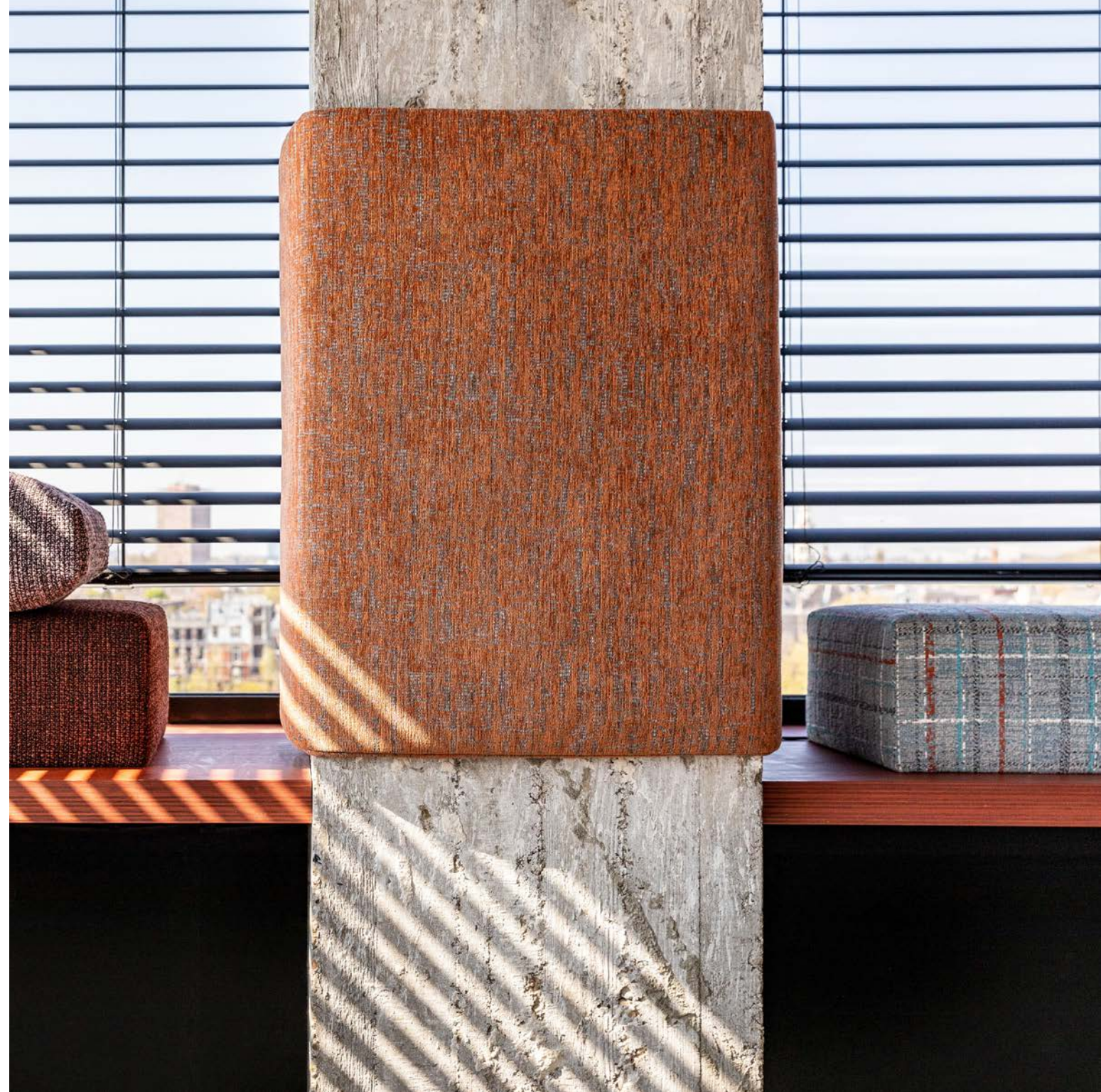
This woven fabric, made of wool and recycled cotton, is a place of encounter and a memory of my childhood at the same time. I remember sitting as a child on a plaid blanket in the forest on a warm autumn day. The blanket was my playground. With Woven Memory, I wanted to capture that feeling again.





Timeless Twine

Timeless Twine is a soft, yet strong, chenille weave that tells a story about showing time and aging in a beautiful way. This fabric, with its rich patina, doesn't want to look brand new and sterile. It reminds me of the clothes you never want to throw away. They make you feel good, the longer you wear them.





Enriched Bouclé

For ages, the technique of embroidery is used to enrich and personalize a fabric. An embroidered initial reveals the owner, while patterns of stitches turn every textile into a unique, luxurious piece.





Quilted Comfort

Quilted Comfort brings with it a secure feeling of protection. Inspired by garments worn by Crusaders in the 12th century, it wraps our interior and provides comfort and softness.

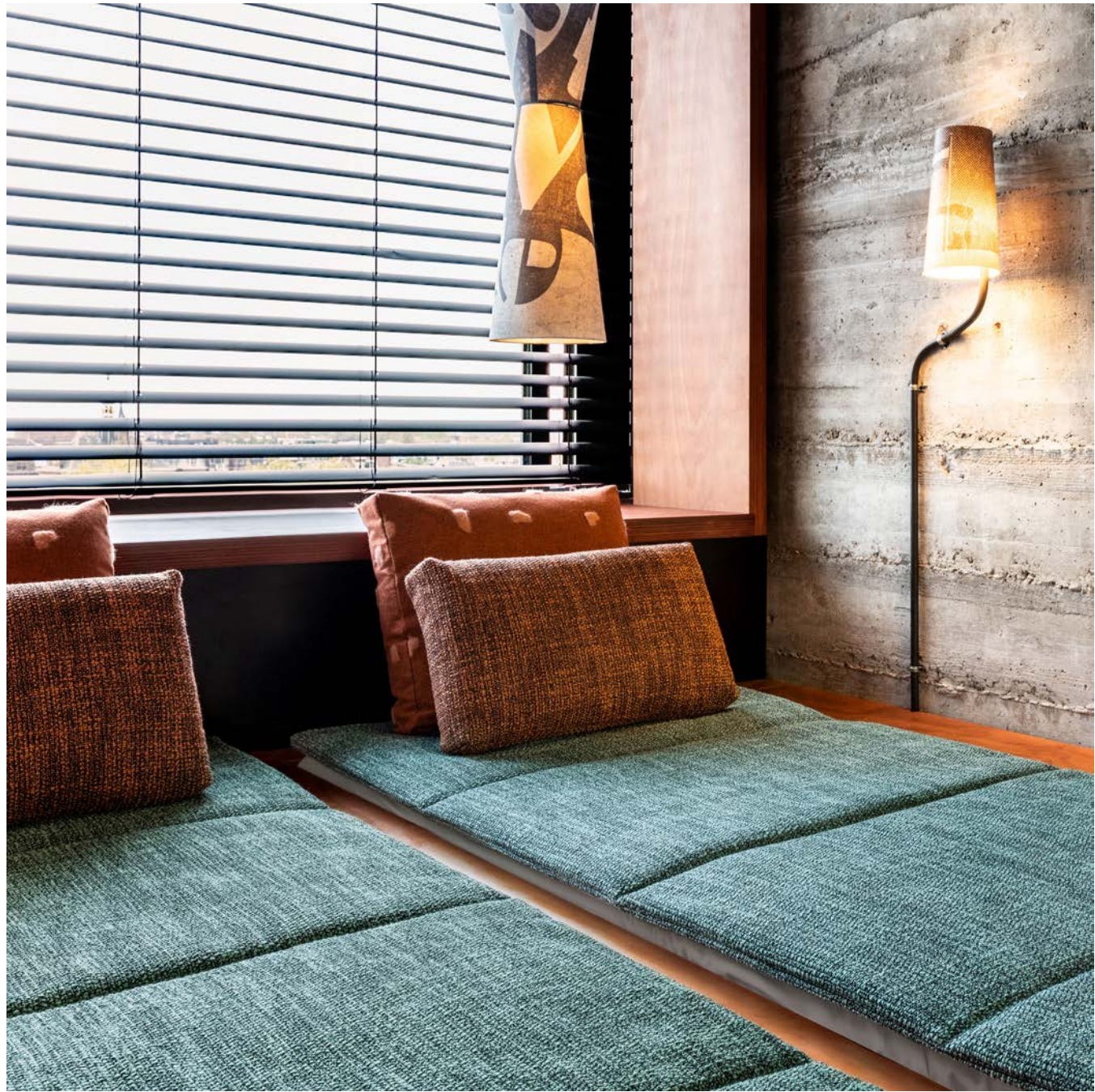




Cherished Knit

Cherished Knit is a richly woven fabric inspired by the technique of knitting. The twist of the yarns enhances the man-made character, and the irregularity in the weave connects us to the hand of the makers.

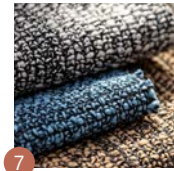
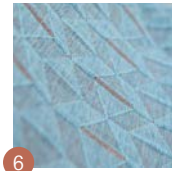
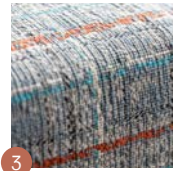
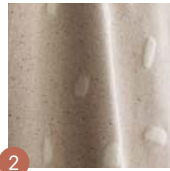




Christiane Müller

With decades of international experience as a textile and surface designer, Christiane Müller has come to honor the culture and craftsmanship that goes into producing textiles. Her goal is to ensure that age-old crafts not only survive but are infused with new life. Her latest collection for HBF Textiles showcases the potential of these crafts in making innovative textiles with meaning and soul for today's world.





1 Crafted Felt

COLORWAYS 11
APPLICATION Upholstery, drapery
CONTENT 67% wool, 28% polyester, 3% nylon, 2% acrylic
WIDTH 55" W
ABRASION 100,000 double rubs (Wyzenbeek)
ORIGIN Italy
FR RATING California TB 117-2013 Section 1 (Pass), NFPA 701 (Pass)
MAINTENANCE S: Clean with water free dry cleaning solvent
SUSTAINABILITY 67% rapidly renewable content
PRICE | GRADE \$49.00/yard | HBF Grade F

2 Crafted Cloud

COLORWAYS 5
APPLICATION Upholstery, drapery
CONTENT 70% wool, 23% polyester, 5% acrylic, 2% nylon
WIDTH 53" W
REPEAT 23 1/2" V x 49" H
ABRASION 50,000 double rubs (Wyzenbeek)
ORIGIN Italy
FR RATING California TB 117-2013 Section 1 (Pass), NFPA 701 (Pass)
MAINTENANCE S: Clean with water free dry cleaning solvent
SUSTAINABILITY 70% rapidly renewable content
NOTES Base cloth available as pattern 1017 Crafted Felt. Large scale repeat. Random repeat is intended for upholstery application.
PRICE | GRADE \$112.00/yard | HBF Grade M

3 Woven Memory

COLORWAYS 6
APPLICATION Upholstery
CONTENT 49% Wool, 39% Cotton, 9% Polyester, 3% Nylon
WIDTH 53" W
REPEAT 25 1/2" V x 27" H
BACKING Light acrylic
ABRASION 100,000 double rubs (Wyzenbeek)
ORIGIN United States
FR RATING California TB 117-2013 Section 1 (Pass)
MAINTENANCE S: Clean with water free dry cleaning solvent
SUSTAINABILITY 88% rapidly renewable content
NOTES Large scale repeat
PRICE | GRADE \$88.00/yard | HBF Grade K

4 Timeless Twine

COLORWAYS 6
APPLICATION Upholstery, wrapped panel, systems panel, drapery
CONTENT 100% Trevira® CS
WIDTH 58" W
ABRASION 85,000 cycles (Martindale)
ORIGIN Germany
FR RATING California TB 117-2013 Section 1 (Pass), Class A rated ASTM E-84 (unadhered), NFPA 701 (Pass)
MAINTENANCE W: Clean with water based shampoo or foam upholstery cleaner
PRICE | GRADE \$63.00/yard | HBF Grade H

5 Enriched Bouclé

COLORWAYS 5
APPLICATION Upholstery
CONTENT 63% polyester, 37% acrylic
WIDTH 56" W
REPEAT 7 1/8" V x 7 1/8" H
ABRASION 100,000 double rubs (Wyzenbeek)
ORIGIN Germany
FR RATING California TB 117-2013 Section 1 (Pass)
MAINTENANCE WS: Clean with upholstery shampoo or mild dry cleaning solvent. Bleach solutions up to 10% for cleaning difficult stains.
NOTES Bleach cleanable
PRICE | GRADE \$66.00/yard | HBF Grade J

6 Quilted Comfort

COLORWAYS 7
APPLICATION Upholstery, wrapped panel, systems panel
CONTENT 100% polyester
WIDTH 50" W
REPEAT 3 7/8" V x 2 5/8" H
ABRASION 55,000 double rubs (Wyzenbeek)
ORIGIN Germany
FR RATING California TB 117-2013 Section 1 (Pass), Class A rated ASTM E-84 (unadhered)
MAINTENANCE W: Clean with water based shampoo or foam upholstery cleaner. Bleach solutions of up to 10% for cleaning difficult stains.
NOTES Bleach cleanable
PRICE | GRADE \$70.00/yard | HBF Grade J

7 Cherished Knit

COLORWAYS 8
APPLICATION Upholstery
CONTENT 56% acrylic, 26% cotton, 15% wool, 3% polyester
WIDTH 54" W
FINISH Alta™
ABRASION 65,000 cycles (Martindale)
ORIGIN Italy
FR RATING California TB 117-2013 Section 1 (Pass)
MAINTENANCE S: Clean with water free dry cleaning solvent
SUSTAINABILITY 41% rapidly renewable content
PRICE | GRADE \$67.00/yard | HBF Grade J

