

Allsteel®



Beyond®



# Seamless Adaptable Solutions

Beyond demountable walls offer seamless solutions for modern office spaces, ensuring uniformity across the floorplate. These walls feature frameless, framed, and solid panel types; integrated technology options; and pre-engineered brackets for furniture integration, resulting in extensive design possibilities. The installation process is streamlined with fully unitized, factory-assembled panels and a scissor-lift leveling mechanism, reducing design complexity and minimizing disruption.



Frameless



Framed



Solid







# Design Flexibility

Through seamless power and technology options, furniture integration capabilities, and a wide portfolio of finishes, Beyond allows for endless functionality and aesthetic customization. Choose from a variety of door types, hardware, and materials to tailor your space to your specific needs. This flexibility ensures that every aspect of your environment, from function to appearance, can be optimized to meet your needs and enhance productivity.





# Integration Options

With hardwired and modular electrical options, technology integration, and seamless connections between Beyond walls and furniture, Beyond effortlessly transforms the workplace, accommodating various workstyles and application types.



Furniture can seamlessly integrate with Beyond walls using pre-engineered brackets and attachment hardware, providing flexibility in workspace layout. The electrical needs for height-adjustable tables and other devices are met through power routed within the walls. All framed and solid panels support the installation of hanging brackets between panels, facilitating the attachment of furniture, hooks, and various work tools.



Beyond enhances technology integration with advanced monitor and power solutions, providing flexible and efficient ways to support modern workspaces. The uniquely engineered system offers seamless connectivity and adaptability, allowing for effortless integration of monitors and other devices, across numerous brands and types of technology.



Beyond supports various building codes with modular and hardwired electrical solutions. Now featuring parametric power placement, these solutions offer unprecedented flexibility by allowing power to be positioned anywhere within the solid panels, enhancing design adaptability and maintaining a clean aesthetic.







# Adaptive Workspace Configurations

Beyond's flexibility supports various workspace needs, from private offices to collaborative areas. By easily reconfiguring panels and walls, different team sizes and workstyles are accommodated, fostering a balance between focused work and group collaboration.



## Private Workspaces & Collaborative Areas

To the right, this application provides private offices, small team meeting areas, and phone booths. The adjacent solo and team spaces facilitate easy gatherings for individuals and groups, promoting a balance between focused work and collaboration.



## Enhanced Collaborative Environment

By removing two interior walls, the space transforms to include a mix of private offices and lounge-style collaborative spaces. This configuration offers a flexible environment that adapts to varying team sizes and workstyles.



## Open Team Meeting Space

Further removing an interior wall creates a spacious team meeting area or conference room, complemented by two adjacent huddle rooms. This layout supports larger gatherings and enhances group communication.



## Open-Concept Collaboration

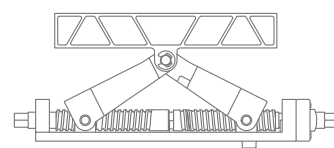
When exterior walls come down, an open team collaboration area is established, defined by a central space-defining wall. This setup includes two small-group settings, ideal for dynamic and interactive team activities.



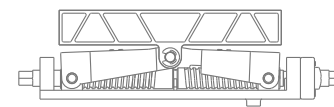
# Ease of Installation

Beyond's fully unitized, factory-assembled panels ensure quick and easy installation while maintaining a consistent, professional aesthetic from the start. Paired with a unique, patented scissor-lift leveling mechanism, these panels offer seamless adaptability. As workspaces evolve, it's simple to reconfigure spaces, transitioning from enclosed offices to open settings with minimal disruption.

Fully unitized construction allows individual Beyond panels to be removed without disrupting the panel run.



Level up



Level down



## Quiet Focus Zones

This configuration allows for privacy in an open-office setting by using walls to create small, quiet heads-down spaces adjacent to workstations. It caters to individuals needing concentration and minimal distractions.



## Agile Corridor for Interaction

Exterior walls are configured to create an active corridor designed for team collaboration. This semi-private space allows team members to come together for spontaneous or planned interaction.







# Beyond Statement of Line

## Glass Panels



Frameless Glass



Monolithic Framed Glass



Segmented Framed Glass



Solid with Clerestory



Integrated Glass

## Solid Panels

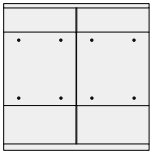


Monolithic Solid

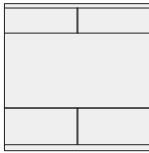


Segmented Solid

## Markerboard Panels

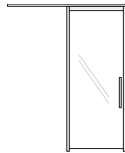


Button-Mounted Markerboard

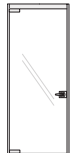


Floating Markerboard

## Doors



Sliding Door



Swing Door

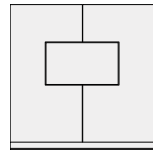
## Technology



Hardwired Electrical



Modular Electrical



Technology Integration

## Hardware



Cylindrical Lever



Ladder Pull



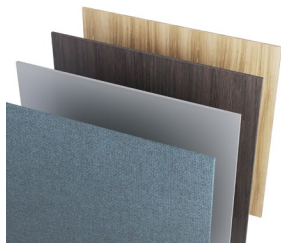
Mortise Lever



Mortise Lever, Title 24

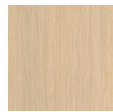
All hardware is available in black or silver, with passage and locking options.

## Panels



STC ratings up to 44 with all panel types. Glass offered in 1/2", 1/4", and 3/8" thicknesses and tempered or laminated options.

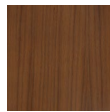
## Veneer



Beigewood



Portico Teak



Light Walnut

## Laminate



Loft



Fawn Cypress



Pinnacle

## Paint



Matte Gold



Flint



Solar Black

## Fabric



Refuge Frost



Blazer Lite Retreat



Noble Pitch

A wide selection of fabrics and finishes is available online at [allsteeloffice.com](https://allsteeloffice.com).

Although the colors reproduced in this brochure were matched with care, they may vary from the actual finish. When color is critical, please obtain a physical sample.



Go to [allsteeloffice.com/idea-starters](https://allsteeloffice.com/idea-starters) for additional Beyond layouts.

**Allsteel**®

Allsteel LLC  
345 N Morgan  
Chicago, IL 60607  
[allsteeloffice.com](https://allsteeloffice.com)  
Form # A8642.B2 (09/24)

©2024 Allsteel LLC  
Allsteel and Beyond are registered trademarks. Indoor Advantage and Environmental Product Declaration are trademarks of SCS Global Services. level is a registered trademark of BIFMA International. Declare is a trademark of the International Living Future Institute.



Beyond contains recycled content and uses recyclable materials.

For more sustainability details, visit [allsteeloffice.com](https://allsteeloffice.com).

