

# Savannah Bananas

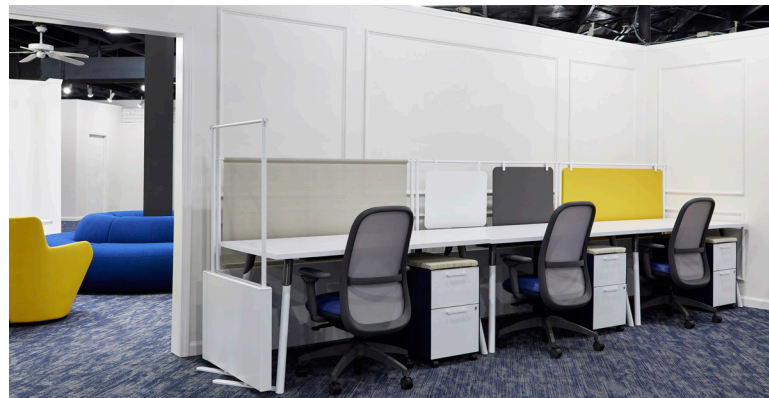
CLIENT STORY

Independent Baseball Team  
Savannah, GA



Hailing from the vibrant city of Savannah, Georgia, the Savannah Bananas have captured the hearts of fans far and wide with their uncommon approach to baseball. Renowned as the "Greatest Show in Sports," this independent barnstorming team has redefined the game, infusing it with an unparalleled blend of entertainment and excitement. Through innovative antics like musical numbers, dance flash mobs, and unconventional game rules, the Bananas have earned a viral reputation for delivering unforgettable experiences both on and off the field.

Despite the team's larger-than-life personality, the Bananas found themselves working in confined quarters beneath the historic Grayson Stadium, where staff often had to resort to working in stadium seats or locker rooms when more space was needed. The Bananas' soaring popularity in the span of only a few years has resulted in rapid growth for the franchise. With a workforce that's grown from only a handful to now nearly 60 dedicated staff members, the need for additional space with better functionality was clearly a pressing priority. Partnering with Forward Tilt, a Scottsdale-based furniture dealer, and Allsteel, the Bananas set out to create a new headquarters that would not only accommodate their continual growth but also echo the energy and excitement of their brand.



*"Working with Forward Tilt was a true collaboration. They opened our eyes to the possibilities of using different fabrics, colors, and textures to complement each other in ways we hadn't considered. They challenged us to think outside the box, suggesting additions that ultimately enhanced the design."*

---

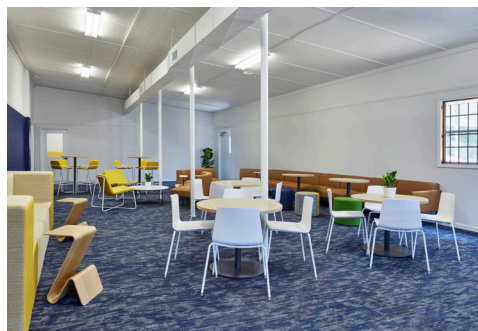
M A R I E M A T Z I N G E R  
— PEOPLE & CULTURE DIRECTOR  
SAVANNAH BANANAS



In early 2023, the Bananas upgraded their cramped 1,500-square-foot digs for a larger 16,000-square-foot building located just a stone's throw away from their beloved ballpark. The property needed significant renovation to create usable office space in conjunction with the warehouse space required for merchandising and fulfillment. From the get-go, it was clear that the workspace had to be more than just a series of desks and chairs. The new Bananas home needed to be a catalyst for creativity, a hub for collaboration, and a tribute to the Bananas' bold spirit.

"At the heart of it all, the Bananas are known for doing things differently", explains Marie Matzinger, People & Culture Director for Savannah Bananas. "We're all about fun. And while we take our work seriously, we never take ourselves too seriously. We wanted our workspace to reflect that unique vibe for our team."

Forward Tilt enthusiastically embraced the challenge, exceeding all expectations by not just supplying furniture but also curating a fully immersive experience that reflects the Bananas' unique story. From cozy modular sofas with ottomans to sleek, curved stools with tables, every Allsteel piece was thoughtfully selected to encourage interaction and innovation.





"We put a lot of emphasis on being able to collaborate with each other," says Matzinger. "While we wanted our spaces to accommodate individual work teams, we also wanted to break down silos and foster cross-departmental collaboration."

Forward Tilt worked closely with the Bananas to tailor each space to the specific needs of the different teams. The smaller ticketing team received ergonomic office layouts geared for efficiency, while the larger creative group was equipped with flexible, open spaces with whiteboards to nurture ideation and collaboration. By carefully considering the job functions and dynamics of each team, Forward Tilt ensured that the furniture and layout were optimized to enhance productivity and workflow for every department.



---

PROJECT DETAILS

---

**Headquarters**

Savannah, GA  
16,000 SF

**Partnerships**

Forward Tilt

---

PRODUCT SOLUTIONS

---

**Desks**

Approach™  
Mural™

**Seating**

06™  
Corral Logger  
Gunlocke LIV  
Jetty:Mod™  
Retreat™  
Two-Thirds™  
Vicinity™

**Tables**

Corral Cobra

**Storage**

Align™

**Accessories**

Park™ Planters

But reimagining this headquarters was about more than just adding functionality and accommodating growth. The use of aesthetics in embodying the brand also played a pivotal role in the final space design. Forward Tilt helped the Bananas thoughtfully select furnishings and finishes that reflect the energy and excitement of the ball club—including plenty of details that showcase the team’s iconic yellow color. “Being able to customize our space with fabrics that align with our brand was crucial,” notes Matzinger. “We can’t settle for just any shade of yellow. It had to be perfect, and Forward Tilt helped us achieve that.”

In addition to featuring bright yellows, furnishings in vibrant greens and bold blues dot the landscape, infusing the team’s brand colors throughout the space. Reminiscent of stadium bleachers, Rise modular lounge seating is incorporated within the break room, injecting a sense of fun into the space and giving a playful nod toward the sport. The versatile break room, currently the largest gathering space, not only serves as a central hub for office staff but also as an area where players and cast members can congregate for orientation sessions and other group activities. By enabling everyone to benefit from the new workspace, the revitalized headquarters has successfully cultivated a spirit of community and camaraderie among all those involved with the franchise.

With a mission of ‘fans first, entertain always,’ every inch of the new work environment pulses with the same infectious energy that defines the Savannah Bananas experience. A long toss from their humble beginnings beneath Grayson Stadium, the Bananas now have a vibrant and dynamic workspace where fun and functionality collide.

