

SHARP

V Series

Professional Installation Projectors ideal for higher education, house of worship, corporate and museum applications

V731U/V801U



4K UHD
READY

LCD laser installation projectors extreme brightness captivates audiences in conference rooms, auditoriums and sanctuaries

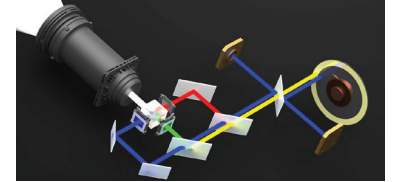
Flexible Installation

- Enjoy greater installation flexibility with motorized bayonet style lenses providing quick and easy exchanges. Lens throw distances range from 0.7 – 50.9m.
 - New UST lens placing the projector above the screen and out of site
(installation may place the projector above the ceiling line)
- Roll-free installation capabilities make these projector ideal for almost any install environment, including portrait orientation



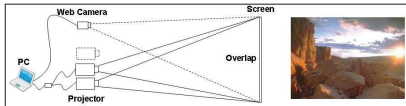
Long Lasting Laser

- Images appear immediately after power on due to instantaneous start up of the laser
- Dual blue laser systems provide best in class white balance over the life of the projector
- Inorganic optical components create longer lifetime and greater peace of mind



Stacking correction

The industry's first built-in stacking correction capabilities (up to four projectors) allows the projectors to boost an image's brightness up to 32,000 lumens, which is ideal for larger-sized screens and environments with heavy ambient light. This feature also prevents the complete loss of an image, which can happen when using only one projector.



Edge blending

This function seamlessly blends multiple projected images to display a single high-resolution image.



ProAssist™

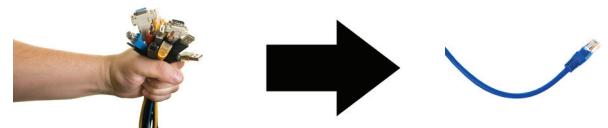
Projector management software for installation professionals provides full projector control for multiple screens to create the perfect image. Controls such as input switching, picture, lens, edge blending, uniformity and gamma control are adjustable through the GUI.

ProAssist™



Built-In HDBaseT Support

Simplify your installations with HDBaseT. Optimized for video applications and supporting uncompressed full HD digital video, audio, ethernet, and various control signals. With only a single cable (up to 100m) to run, infrastructure and labor costs are reduced, installations are significantly easier, and there is no cable clutter to manage. With uncompressed HD video support, images have never been more stunning. What's more, control signals are contained in the same cable.



Remote control

Wired and wireless backlit remote allows you to adjust for complete control of the projectors menu structure in a well lit or dark environment. Direct controls such as lamp mode, aspect ratio, volume and input selection eliminates multiple button pushes.



Cable Cover

This optional accessory creates a clean look for your installation, while hiding signal cables and the power cord.



Powerful Tools

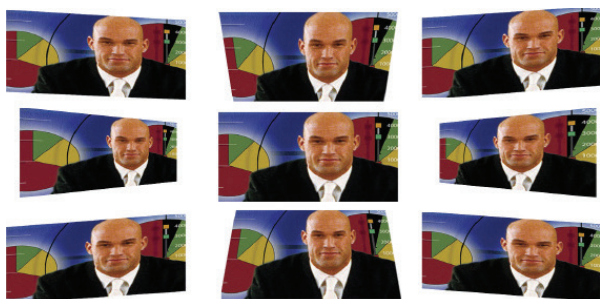
- Multi-display support with Picture by Picture/Picture in Picture
- Seamlessly blend multiple images with integrated edge blending capabilities

Filter

- 10,000-hour filter life
- Sharp is committed to designing its products to provide long lifecycles
- This virtually maintenance-free filter reduces the frequency at which cleaning is required, thereby decreasing total cost of ownership

Cornerstone

Enhanced keystone correction allows for horizontal, vertical and diagonal image correction for aligned images even when the projector is set up at an angle to the screen.



Legacy Support

Customers utilizing previous generation NEC projectors can use their existing lenses. Eliminates the costly expense of purchasing a new lens. The time consuming efforts and costs associated with reinstallation are eliminated. Supports the legacy manually adjustable lenses, NP11FL, NP12ZL, NP13ZL, NP14ZL and NP15ZL.



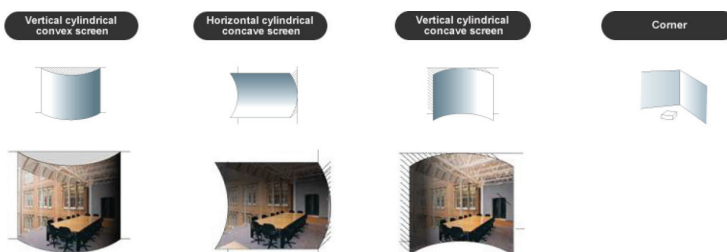
Integrated

4K UHD
READY

- 4K Ready - Display stunning 4K30 content using Sharp's proprietary high performance video processing/scaling chip without the loss of critical details. HDR10 and BT.2020 signals from "Ultra HD Blu-ray" and "4K TV broadcasting" are supported on all digital inputs
- Integrated software applications such as AMX Beacon, Crestron Roomview, Extron XTP and PJ Link allow for complete control system support
- Lower the cost of your installation by eliminating the need for costly reprogramming of a control system. (supports competitors commands, call Sharp for complete list)

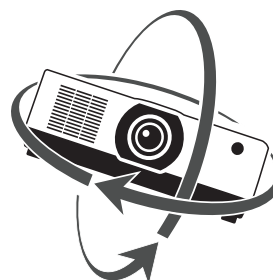
Geometric Correction

Projecting an image isn't confined to a standard flat screen or wall with the Sharp V Series. Geometric correction allows these models to project an image on spheres, cylinders, corner angles and many more non-standard surfaces.



Roll Free

When installation requirements dictate the projector needs to be placed at different angles the V Series with Roll Free capabilities assures it is the correct projector of choice.



Unique Features

Optional short and long throw lenses available for maximum installation flexibility.

HDBaseT input provides a single connection for uncompressed full HD digital video, audio, ethernet and various control signals

Competitor command support reduces the need for reprogramming basic controls

In the Box

Remote control, batteries, power cord, cable cover, quick start guide, product registration card.

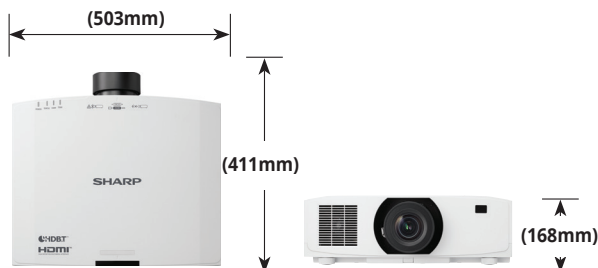
Accessories

Optional Lenses XP40ZL, XP41ZL, XP43ZL, XP44ML, XP50ZL

Optional terminal Cover XP-10CV-B, XP-10CV-W

Ordering Model Numbers

XP-V731U-B XP-V801U-B
XP-V731U-W XP-V801U-W



MODEL		XP-V731U	XP-V801U
Display Technology		0.76" LCD	
Brightness (typical)		7300 Lumens	8000 Lumens
Brightness (maximum)		7600 Lumens	8300 Lumens
Resolution	Screen	WUXGA 1920x1200	
	Maximum	4K 4096 x 2160	
Aspect Ratio		16:10 (Supports 4:3, 16:9, 21:9)	
Contrast Ratio (up to)		3,000,000:1 (with Dynamic Contrast)	
Laser Life (up to)		20,000 hours	
Screen Size (diagonal)		100 to 400 in. / 2.54 to 10.16m, XP44ML; 50 to 500 in. / 1.27 to 12.7m, XP50ZL, XP40ZL, XP41ZL, XP43ZL	
Throw Ratio	XP44ML	0.32:1	
	XP50ZL	0.6-0.76:1	
	XP40ZL	0.79 - 1.11:1	
	XP41ZL	1.30 - 3.02:1	
	XP43ZL	2.99 - 5.93:1	
Projection Distance		0.70 to 50.9m	
Projection Angle		10.3 to 10.8° tele / 13.7 to 14.5° wide	
Lens	Zoom	Motorized	
		XP44ML 1.0x	
		XP50ZL 1.25x	
		XP40ZL 1.4x	
		XP41ZL 2.3x	
		XP43ZL 2.0x	
	Focus	Motorized	
		XP44ML Motorized zoom / focus, F=2.0, f= 6.27, 3.1 kg	
		XP50ZL Motorized zoom / focus, F=1.9 to 2.1, f= 49.7 to 99.8mm, 2.5 kg	
		XP40ZL Motorized zoom / focus, F=2.0 to 2.5, f= 13.3 to 18.6mm, 1.6 kg	
		XP41ZL Motorized zoom / focus, F=1.7 to 2.0, f= 21.8 to 49.8mm, 1.7 kg	
		XP43ZL Motorized zoom / focus, F=2.2 to 2.6, f= 49.7 to 99.8mm, 1.7 kg	
	Shift	+50/-10% Vertical, +/-20% Horizontal	
	Shutter	Laser Shutter	
Keystone Correction		+/- 30° horizontal, +/- 30° vertical	
Synchronization Range	Horizontal	24-100kHz	
	Vertical	50-85Hz	
SD/HD Video Signal Compatibility		480i, 480p, 576i, 576p, 720p, 1080i, 1080p, 4K	
PC Signal Compatibility		VGA, SVGA, XGA, SXGA, SXGA+, UXGA, WUXGA, Quad HD	
Macintosh Compatibility		Yes	
Input Terminals	RGB2 (digital)	HDMI (V2.0) w/HDCP (V1.4/2.2)	
	RGB3 (digital)	HDMI (V2.0) w/HDCP (V1.4/2.2)	
	RGB4 (digital)	HDBaseT w/HDCP (V1.4/2.2)	
Output Terminals	Audio Out	Stereo Mini Jack	
External Control		RS-232, IR, DDC/CI	
Power Requirements		100-240V AC, 50/60 Hz	
Input Current		5.3A - 2.2A	6.1A - 2.5A
Power Consumption			
(ECO off/ECO Mode/Standby/Standby-Power Saving)		456W / 412W / 1.7W / 0.16W	490W / 445W / 1.7W / 0.16W
Installation Orientation		Floor/Front, Floor/Rear, Ceiling/Front, Ceiling/Rear	
Product Dimensions (WxDxH)		19.8 x 6.6 x 16.2 in. / 503 x 168 x 411 mm	
Net Weight		24.7 lbs. / 11.2 kg	
Shipping Dimensions (WxDxH)		23.3 x 10.2 x 19.3 in. / 591 x 259 x 591 mm	
Gross Weight		29.5 lbs. / 13.4 kg	
Fan Noise		40 dB normal / 31 dB eco	42 dB normal / 32 dB eco
Regulations	US	USA UL60950-1: 2005+A1: 2009+A2: 2013, IEC 60825-1:2014 (Ed.3), FCC Part15 Subpart B(ANSI C63.4.2014)	
	Canada	CAN/CSA C22.2 No.62368-1-18,3rd Edition, ICES-003 Issue 7(ANSI C63.4-2014)	
Operating	Altitude	0 to 2600 m (8,500 ft)	
	Temperature	32-113°F / 0-45°C	
	Humidity	20 to 85% Humidity (Non-Condensing)	
Storage	Altitude	0-12,000m / 0-39,370ft (above sea level)	
	Temperature	14-122°F / -10 50°C	
	Humidity	20% - 80% (non-condensing)	

* Lens does not ship with the projector.

Sharp, NaViSet and all related trademarks are trademarks or registered trademarks of Sharp Corporation and/or its affiliated companies. The terms HDMI, HDMI High-Definition Multimedia Interface, and the HDMI Logo are trademarks or registered trademarks of HDMI Licensing Administrator, Inc. Crestron, the Crestron logo, Crestron Connected, and XIO Cloud are either trademarks or registered trademarks of Crestron Electronics, Inc. in the United States and/or other countries. All other brand names and product names may be trademarks or registered trademarks of their respective owners. Design and specifications are subject to change without prior notice.



www.sharp.net.au

VisualSolutions@sharp.net.au

1300 135 022

SHARP CORPORATION OF AUSTRALIA PTY LTD, P.O. Box 84, Macquarie Park, NSW, 2113: ABN 40 003 039 405

This document is © 2025 Sharp NEC Display Solutions Ltd.

All rights reserved in favour of their respective owners. All hardware and software names are brand names and/or registered trademarks of the respective manufacturers. All specifications are subject to change without notice. Errors and omissions are excepted. (December 2025)