

SHARP

P Series

Ideal for higher education classrooms
and corporate conference rooms

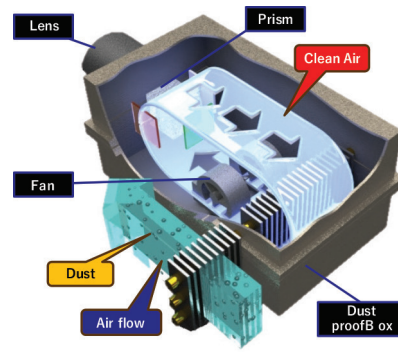
P621U / P701U



Versatile, maintenance free, and quiet: Entry installation projectors with a reliable laser light source.

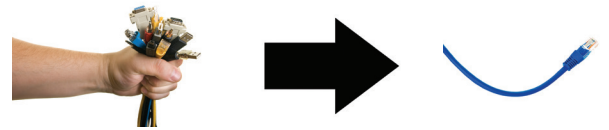
Eliminate Downtime with Advanced Dust Protection and Longevity

- **Zero Maintenance Requirements:** The IP5x sealed LCD cooling system protects optics from dust, which completely eliminates the need for filter cleanings or replacements.
- **Extended Operational Life:** Benefit from advanced laser technology that provides a consistent, high quality light source for up to 20,000 hours of use. 20,000 hours.



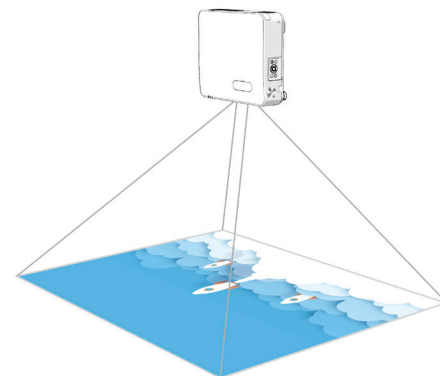
Simplify Your Setup and Reduce Costs with Single Cable HDBaseT Connectivity

Streamline your installation using a single cable to manage uncompressed HD video, audio, and control signals. This efficient solution eliminates cable clutter while delivering stunning, high definition imagery over distances up to 100m.



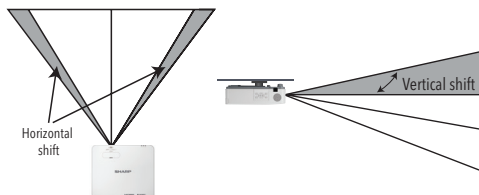
Flexible Installations

- Broad 1.6x manual zoom lens and manual lens shift capabilities make alignment easy: (H = +/- 20% / V = 0%~+44%)



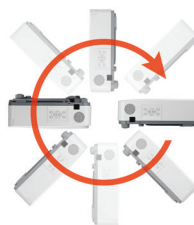
Lens Shift

Manual lens shift provides greater flexibility when determining an install location.



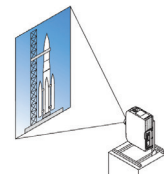
Roll free

The projector can be rotated freely (360°) to orient the image depending on the installation requirements.



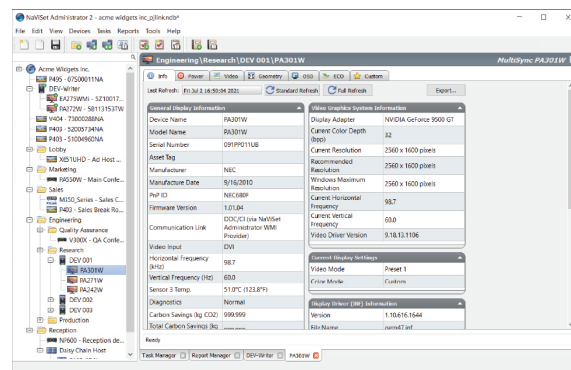
Portrait mode

Allows the projector to be rotated (and screen if necessary) to a vertical alignment so that portrait content can be viewed without black bars on the side when landscape mode is used.



NaViSet Administrator

This software is an all-in-one remote support solution that runs from a central location and provides monitoring, asset management and control functionality for a majority of Sharp display devices. It is ideal for multi-device installations over larger infrastructures.



Powerful Performance

- Lowest audible noise of any projector in this class provides distraction free presentations.
- After startup, images appear immediately with breakthrough laser technology.
- Brightness adjustment and constant brightness mode maximize laser life and allow for a consistent looking image over an extended period of time.
- High performance video processing/scaling supports 4K/30 content and 21:9 aspect ratio for more engaging meeting spaces.



WHISPER QUIET

**4K UHD
READY**

Unique Features That Make a Difference

IP5x Sealed LCD cooling system eliminates the need for a filter which reduces recurring maintenance requirements and lowers TCO

Broad manual lens shift provides installers with greater flexibility horizontally and vertically when choosing a mounting location and obstructions in the ceiling are a concern

Whisper quiet operation minimizes any distraction created from the sound of the projector in applications where the audience would be sensitive to external noise

Built-in 16W speaker can potentially save users from needing a separate audio system in smaller rooms

Included 2.0A USB power allows for low-voltage 3rd party devices to be powered directly from the projector eliminating the need for additional electrical outlets in the ceiling

Warranty

Registered owners receive a five (5) years or 20,000 hours (whichever comes first) parts and labor warranty.

In the Box

Remote control, batteries, power cord, lens cap, quick start guide

Ordering Model Numbers

XP-P621U-W

XP-P701U-W



		XP-P621U-W	XP-P701U-W
Display Technology		0.64" LCD	
Light Output (lumens)	Normal	6,200 Lumens	7,000 Lumens
	Center	6,500 Lumens	7,400 Lumens
Screen Resolution		WUXGA 1920x1200	
Aspect Ratio		Up to 4K UHD (3840x2160) @ 30Hz via HDMI, HDBaseT	
Contrast Ratio (up to)		16:10 (Supports 4:3, 16:9, 21:9)	
Contrast Ratio (up to)		3,000,000:1 (Dynamic)	
Laser Life		20,000 hours (until 50% brightness)	
Screen Size (diagonal)		30-300 in. / 0.762 to 7.6 m	
Projection Distance		0.7 to 7m	
Lens	Zoom	Manual, 1.6x	
	Throw Ratio	1.08-1.76:1	
	Shift	+44% Vertical, +/-20% Horizontal	
	F-number, focal length	F: 1.58-2.02, f: 15.3-24.6 mm	
Keystone Correction		+/- 30° horizontal (manual), +/-30° vertical (auto)	
Synchronization Range	Horizontal	15 to 100KHz	
	Vertical	50 to 120Hz	
SD/HD Video Signal Compatibility		480i, 480p, 576i, 576p, 720p, 1080i, 1080p, 4K UHD	
PC Signal Compatibility		VGA, SVGA, XGA, WXGA, SXGA, WUXGA	
Macintosh Compatibility		Yes	
	RGB1 (digital)	HDMI w/ HDCP (V1.4)	
	RGB2 (digital)	HDMI w/ HDCP (V1.4)	
	RGB3 (digital)	HDBaseT w/ HDCP (V1.4)	
Output Terminals	Audio Out	Stereo Mini Jack (variable)	
Wired LAN		RJ-45 (IEEE 802.3/802.3u 10BASE-T/100BASE-TX)	
USB	Type A	Power (2A)	
	Type B	Service	
External Control		RS-232 (D-Sub 9pin), IR, LAN, HDBaseT	
Built-in Speaker		16W (mono)	
Power Requirements		100-240V AC, 50/60 Hz	
Input Current		3.8A - 1.6A	5A - 2A
Power Consumption (Normal / Long Life / Network Standby / Standby)		315W / 260W / 8W / 0.3W	375W / 305W / 8W / 0.3W
Installation Orientation		Floor/Front, Floor/Rear, Ceiling/Front, Ceiling/Rear	
Product Dimensions (WxDxH)		480 x 143 x 407 mm	
Net Weight		9.6 kg	
Shipping Dimensions (WxDxH)		591 x 259 x 491 mm	
Gross Weight		13 kg	
Fan Noise		29 dB normal / 22 dB silent	31 dB normal / 22 dB silent
Regulations		CE; ErP; RCM; RoHS; TUEV Type Approved	
Operating Conditions	Altitude	0 to 2600 m, >1,600m req High Altitude (fan mode)	
	Temperature	0-45°C	
	Humidity	20 to 80% (Non-Condensing)	
Storage Conditions	Altitude	0-12,000m (above sea level)	
	Temperature	-10 50°C	
	Humidity	20% - 80% (Non-Condensing)	

Link Extron AMX

SHARP

SHARP CORPORATION OF AUSTRALIA PTY LTD
ABN 40 003 039 405
P.O. Box 84, Macquarie Park, NSW 2113
Tel: 1300 135 022
www.sharp.net.au

Sharp, and all related trademarks are trademarks or registered trademarks of Sharp Corporation and/or its affiliated companies. The terms HDMI, HDMI High-Definition Multimedia Interface, and the HDMI Logo are trademarks or registered trademarks of HDMI Licensing Administrator, Inc. All other brand names and product names may be trademarks or registered trademarks of their respective owners. Design and specifications are subject to change without prior notice.