

Parade Magazine : Capsule Wardrobe

Contribution by: Karima El-hakkaoui : creative director + personal stylist

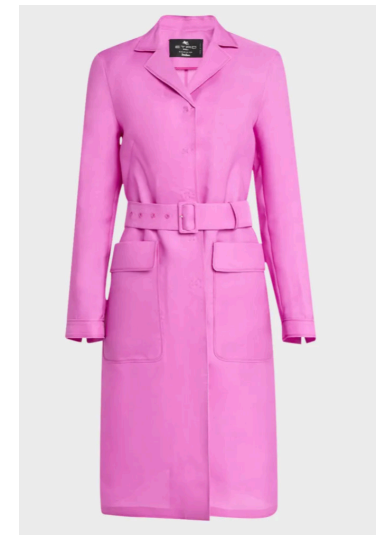
YOUR CAPSULE BASIC

Once you have this



YOUR CAPSULE PHASE 2

add some color that aligns with your style



FAVORITE DAUGHTER
The Charles Trench, \$398

MACKAGE
\$1254

TOTEME
Organic Cotton Trench
\$1420

ETRO
Silk Organza
Belted Trench
\$1195

Turn page for more →

Parade Magazine : Capsule Wardrobe

Contribution by: Karima El-hakkaoui : creative director + personal stylist

YOUR CAPSULE BASIC

Once you have this

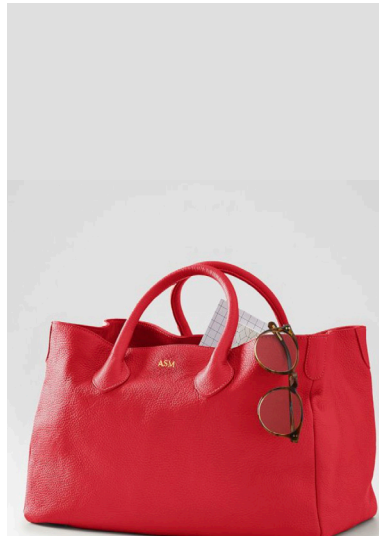


COS

Gallery Tote Bag
\$250

YOUR CAPSULE PHASE 2

add some color that aligns with your style



MARK AND GRAHAM

Elisabetta Handbag
\$399



MANSUR GAVRIEL

Drawstring Pouchette
\$545



FRANCES VALENTINE

Large Margaret Tote
\$448