

BIGAB Z 6.6 / Z 8.0



Photo shows Z 6.6



Photo shows Z 6.6



Photo shows Z 6.6



Photo shows Z 6.6

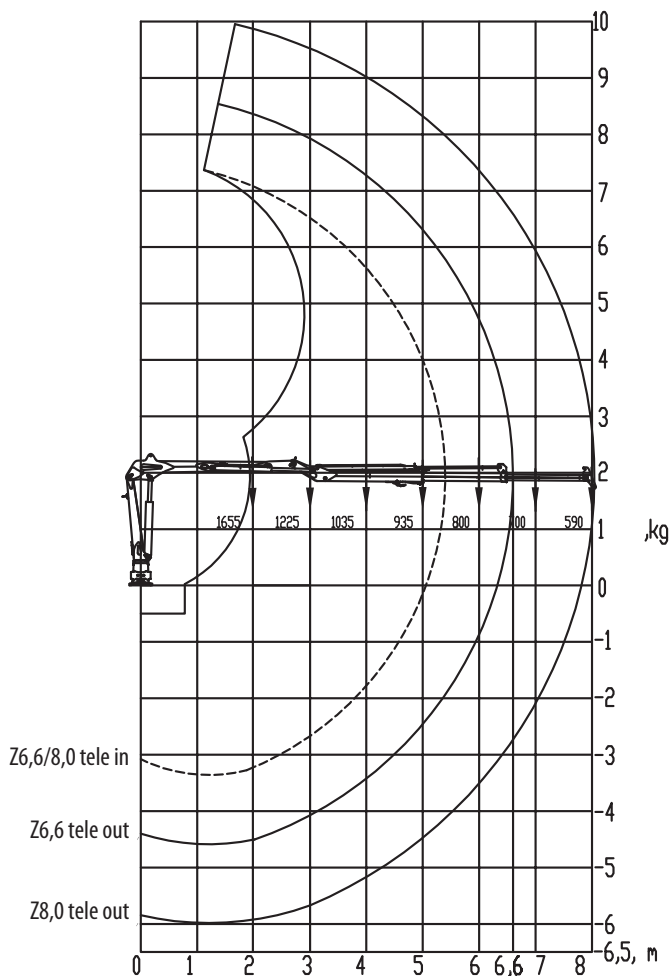
Note! The crane in the pictures is also equipped with radio control and is mounted on a BIGAB 12-15. The trailer is extra equipped.

A crane for contractors

The function and design of the Z-crane have been developed specifically for BIGAB. The crane is designed to be parked in front of the tower in the transport position, so that it does not cause disruption during tipping and exchange. Thanks to an innovative approach in the

design of the crane, a great deal of energy has been devoted to increasing visibility from the cab during tipping and exchange. For technical data and measurement sketches see backside of the leaflet. For more information, see www.forsmw.com.

BIGAB Z 6.6 / Z 8.0



Technical data	Z 6.6
Lifting capacity, net (kNm):	48
Slewing torque (kNm):	16
Slewing angle (degrees):	380
Reach (m):	6,6
Telescopic stroke length (m):	1,45
Recommended flow (l/min):	50-80
Working pressure (bar):	190
Weight kg incl. 0.20 grapple/ Weight of crane:	955/820
Weight kg incl. 0.24 grapple/ Weight of crane:	990/820
Lifting force kg at full length (excl. Grapple and rotator):	750 kg

Technical data	Z 8.0
Lifting capacity, net (kNm):	47
Slewing torque (kNm):	16
Slewing angle (degrees):	380
Reach (m):	8,0
Telescopic stroke length (m):	2,65
Recommended flow (l/min):	50-80
Working pressure (bar):	190
Weight kg incl. 0.20 grapple/ Weight of crane:	1000/870
Weight kg incl. 0.24 grapple/ Weight of crane:	1040/870
Lifting force kg at full length (excl. Grapple and rotator):	590 kg

