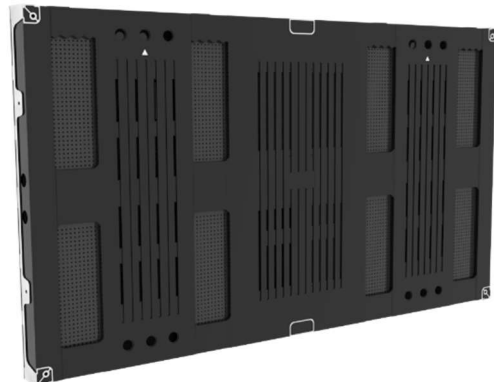


LED-PV015i-275

Indoor LED 1.5mm 275" UHD Bundle

Product Information Sheet  
Indoor LED 1.5mm – PRO VESA – 275" UHD Bundle

## LED-PV015i-275



### Essential bundles of brilliance

---

For bezel-free viewing experiences using vivid LED technology, Sharp's PRO-VESA Series delivers essential visualization for scalable large digital surfaces. Even for cost-conscious deployments for presentation and signage, PRO-VESA provides long lasting Sharp quality with an innovative VESA-mount-compatible form factor of 55" diagonal, and available in off-the-shelf bundle solutions delivering safe operation with minimised downtimes.

Sharp's innovative VESA mount compatible PRO-VESA SMD series generates crisp, clear viewing without fading or distortion in any ambient light, whether it's day or night, bright or dark.

Either free standing or for seamless integration into interiors, the slim design is sleek and chic as befits the latest innovation in digital content delivery. Benefit from excellent viewing angles, consistent vibrant colours, superb brightness and long lasting performance for meeting rooms and signage applications.

#### Benefits

**Care-free installation** – VESA 400 compatible bundled solutions that deliver all you need to get your LED video wall up and running.

**Large scale for perfectly detailed imagery** – completely bezel-less design with high contrast rates deliver an unhindered viewing experience.

**Slim design** – with a flush rear profile, LED modules can be integrated very close to the wall with no gap necessary due to minimal heat emission.

**Front serviceable modules** – with front access to the LED modules, maintenance is easy.

**Visual excellence** – high contrast and high brightness is inherent in LED delivery, benefit from Sharp's long-lasting quality.

## Product information

Product Name	LED-PV015i-275 UHD Bundle
Product Group	Indoor LED, PRO-VESA series
Order Code	LED-PV015i-275

## Display

Pixel Configuration	3-in-1 SMD (Black)
LED type	SMD (1010)
Screen Size [inch/cm]	275 / 698.5
Aspect Ratio	16:9
Pixel Pitch [mm]	1.578
Brightness (max.) [cd/m <sup>2</sup> ]	800
Lifetime	100,000 hrs (50% brightness)
Contrast Ratio (typ.)	6000:1
Viewing Angle [°]	160 horizontal / 160 vertical
Dimming Capability	256 levels
Colour Processing	16 bit
Colours	281 trillion
LED Driving Method	1/27 dynamic scan
Frame Rate	50/60 Hz
Refresh Rate [Hz]	< 3840
Colour Temperature [K]	2500 - 10000

## Screen Resolution

Resolution	3840 x 2160
Resolution per m <sup>2</sup>	401,382
Number of Pixel per module[dot]	192 x 216
Number of Pixel per card[dot]	165,888

## Connectivity

Input Video Digital	1x HDMI 1.0; 2x 3G-SDI; 4x DVI-D (as standard, alternative options available)
Input Control	1x Ethernet LAN; 1x USB IN; 1x USB OUT (Cascading)

## Electrical

Total Power Consumption [W]	3,000 typ. / 8,475 max.
Power Consumption typ. [W]	145 per m <sup>2</sup> (normal use)
Power Consumption max. [W]	410 per m <sup>2</sup>

## Environmental Conditions

Operating Temperature [°C]	-10 to 60
Operating Humidity [%]	10 to 90

**Mechanical**

Dimensions (W x H x D) [mm]	6,060 x 3,410 x 58
Dimensions (W x H x D) [mm]per module	303 x 341 x 8
Weight [kg]	375

**Additional Features**

Shipping Content	1x LED Controller; LED Modules [25x Cabinets, Pixel Cards); Wall mount Kit (5x5); Pixel Card Removal Tool; Spare Parts Kit (5% as standard)
Manufacturer	Sharp
Serviceability	Front Service
IP Level	IP40
Certifications	CCC; CE; ETL; FCC Class B; RoHS; RCM
Warranty	3 years conditional warranty

**For more information:**
 [www.sharp.net.au](http://www.sharp.net.au)

[VisualSolutions@sharp.net.au](mailto:VisualSolutions@sharp.net.au)

[1300 135 022](tel:1300135022)

SHARP CORPORATION OF AUSTRALIA PTY LTD, P.O. Box 84, Macquarie Park, NSW, 2113: ABN 40 003 039 405

This document is © 2024 Sharp Corporation of Australia

All rights reserved in favour of their respective owners. All hardware and software names are brand names and/or registered trademarks of the respective manufacturers. All specifications are subject to change without notice. Errors and omissions are excepted. (5<sup>th</sup> Apr 2024)