

SHARP

P Series

Bringing big screen 4K UHD into the mainstream

P601Q/P721Q



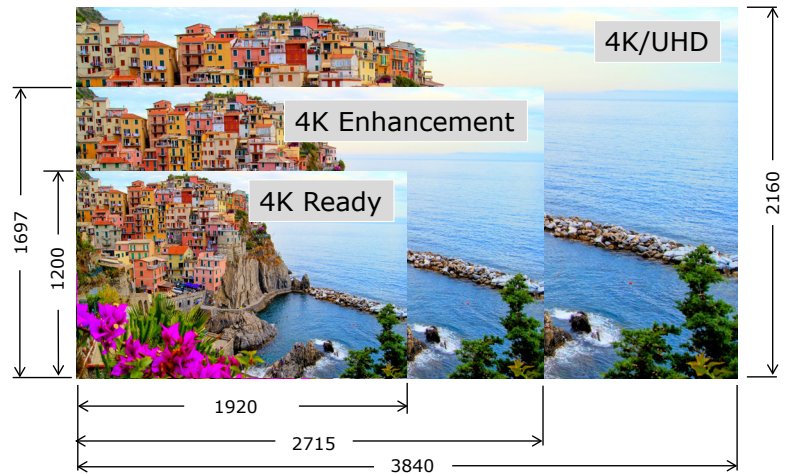
Taking 4K laser projection into new frontiers with a unique combination of brightness and function.

Powerful Performance

- Native 4K UHD (3840 x 2160) resolution produces stunning images with incredible detail
- After startup images appear immediately with breakthrough laser technology
- Advanced laser technology delivers a reliable, maintenance free light source for 20,000 hours
- Integrated software support for Crestron, AMX, PJ Link control systems

4K UHD Resolution

- Utilizing the latest DMD chip from Texas Instruments with pixel shift capabilities resulting in an unsurpassed viewable resolution of 8.3million pixels
- Viewable resolution matches standard 4K UHD LCD displays providing consistency when developing content for your presentations



Advanced Connectivity



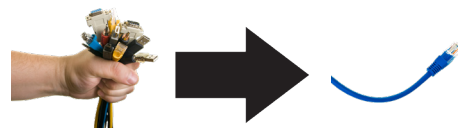
More Flexible Installations

- Motorized zoom, focus and lens shift simplifies installation and operation by easily adjusting the lens through the remote control
- Lens shift capabilities make alignment easy: (H = +/- 25% / V = +/-55)
- Tilt-free installation capabilities make these projectors ideal for almost any install environment, including portrait orientation



Built-In HDBaseT Support

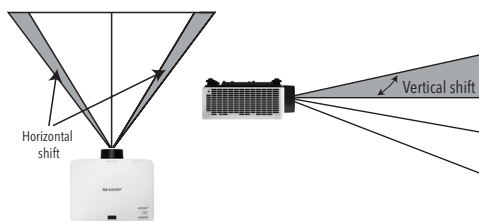
Streamline your installations with HDBaseT. Optimized for video applications and supporting uncompressed digital video, audio, ethernet and various control signals. With only a single cable (up to 100m) to run, infrastructure and labor costs are reduced, installations are significantly easier, and there is no cable clutter to manage.



Advanced Installation Features

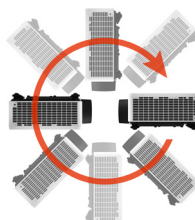
Motorized Lens Shift, Zoom and Focus

Lens shift provides greater flexibility when determining install location



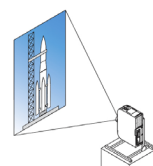
Tilt-free

The projector can be rotated freely (360°) to orient the image depending on the installation requirements



Portrait mode

Allows the projector to be rotated (and screen if necessary) to a vertical alignment so that portrait content can be viewed without black bars on the side when landscape mode is used.



UNIQUE FEATURES

Filter free DLP technology reduces recurring maintenance requirements and lowers TCO

Broad motorized lens shift provides installers with greater flexibility horizontally and vertically when choosing a mounting location and obstructions in the ceiling are a concern

Motorized zoom and focus make lens adjustment fast and easy using the included remote control

Built-in speaker can potentially save users from needing a separate audio system in smaller rooms

Included 1.5A USB power allows for low-voltage 3rd party devices to be powered directly from the projector eliminating the need for additional electrical outlets in the ceiling

WARRANTY

Registered owners receive a five (5) years or 20,000 hours (whichever comes first) limited warranty.

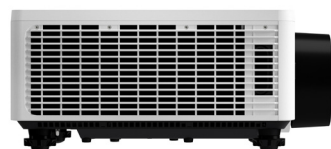
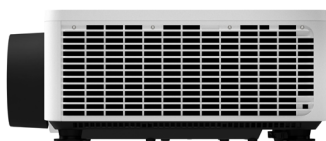
SHIPS WITH

Remote control, batteries, power cord, quick start guide, product registration card.

ORDERING MODEL NUMBERS

XP-P601Q-W

XP-P721Q-W



		XP-P601Q-W	XP-P721Q-W
Display Technology		0.65" DMD	
Light Output (lumens)	ECO mode OFF	6,000	7,200
	ECO mode	Approximately 50%	
Screen Resolution		4K UHD 3840 x 2160	
Aspect Ratio		16:9 (Supports 4:3, 16:10, 21:9)	
Contrast Ratio (up to)		3,000,000:1 (Dynamic)	
Laser Life (50% brightness)	ECO mode OFF	20,000 hours	
	ECO mode	30,000 hours	
Screen Size (diagonal)		60 - 300 in. / 1.52 - 7.62m	
Projection Distance		5.2 to 42.3 ft. / 1.6 to 12.9m	
Projection Angle		0 - TBD° tele / 0 - TBD° wide (at 100")	
Lens	Zoom	Motorized	
	Zoom Ratio	1.6x	
	Throw Ratio	1.25 - 2.0:1	
	Focus	Motorized	
	Shift	Motorized (H = +/- 25% / V = -0%~+55%)	
F-number, focal length		F:2.0~2.4 / f=18.7~29.6mm	
Keystone Correction		Manual (horizontal/vertical)	
Synchronization Range	Horizontal	15-140kHz	
	Vertical	24-120Hz, 240Hz	
SD/HD Video Signal Compatibility		720p, 1080i, 1080p, 4K UHD, 4K	
Input Terminals	RGB1 (digital)	HDMI w/ HDCP (v1.4/2.2)	
	RGB2 (digital)	HDMI w/ HDCP (v1.4/2.2)	
	RGB3 (digital)	HDBaseT	
Output Terminals	Audio Out	Stereo Mini Jack	
	Screen Trigger	12V (stereo mini jack)	
Wired LAN port		RJ45 (100Base-TX/10Base-T)	
USB	Type A	Power (1.5A)	
	Type B	Service	
External Control		RS-232 (D-Sub 9pin), IR, LAN, HDBaseT, Wired Remote	
Wired Remote		Remote In (stereo mini jack)	
Built-in Speaker		10W x2	
Power Requirements		100-240V AC, 50/60 Hz	
Input Current		6.5-2.6A	
Power Consumption	ECO mode OFF	530W	
	ECO mode	285W	
	Standby (network)	2W	
	Standby (normal)	0.5W	
Installation Orientation		Floor/Front, Floor/Rear, Ceiling/Front, Ceiling/Rear	
Product Dimensions (WxHxD)		486 x 185.5 x 432.5 mm	
Net Weight		14.5 kg	
Shipping Dimensions (WxHxD)		657 x 373 x 563 mm	
Gross Weight		18.9 kg	
Fan Noise		36dB (ECO mode Off), 34dB (ECO mode)	
Regulations		USA: cTUV (UL62368-1 3rd ed.) FCC Part15 Class B, Canada: CAN/CSA (62368-1:19 3rd ed.) ICES-003 Issue 7	
Operating Temperature		0-45°C	
Storage		-10-60°C	
Humidity		10 to 85% Humidity (Non-Condensing)	



SHARP
Be Original.

SHARP CORPORATION OF AUSTRALIA PTY LTD

ABN 40 003 039 405
P.O. Box 84, Macquarie Park, NSW 2113
Tel: 1300 135 022
www.sharp.net.au

Sharp, and all related trademarks are trademarks or registered trademarks of Sharp Corporation and/or its affiliated companies. The terms HDMI, HDMI High-Definition Multimedia Interface, and the HDMI Logo are trademarks or registered trademarks of HDMI Licensing Administrator, Inc. All other brand names and product names may be trademarks or registered trademarks of their respective owners. Design and specifications are subject to change without prior notice.