

MSDs reduction



Complys[®] range

The bridge chair for everyone



Chair



Bridge



Bridge +

Oak finish and Gingko material (colors silver, mole, apple green)

Easier moving of residents • Makes transfers easier • Quick cleaning

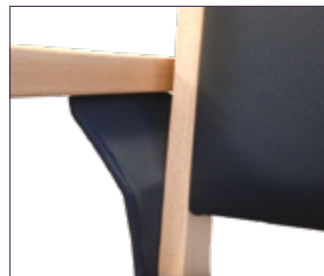
Ergonomically designed to improve lives



The Complys® range is both maneuverable and functional: the chair, the bridge and the bridge + are designed to be **stackable** for storage.

It is an elegant, designer range that has a large choice of colors, coverings and wood finishes.

The addition of an ergonomic handle on the seat back allows for a firm grip when moving.



Quality finishes



Ergonomic handle

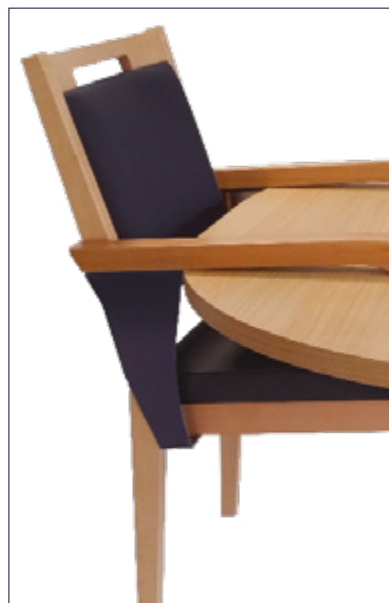
Complys Bridge + : the bridge with the greatest functionality

With its sliding armrests, the bridge + allows MSDs to be reduced and maximum support to be provided for residents experiencing a loss of independence.

In addition, it adapts to all body sizes, with a **wide seating area whose depth can be adjusted**.



Allows residents to be moved towards the table using a «leveraging» effect.
Keeps incorrect movement and the occurrence of MSDs to a minimum.

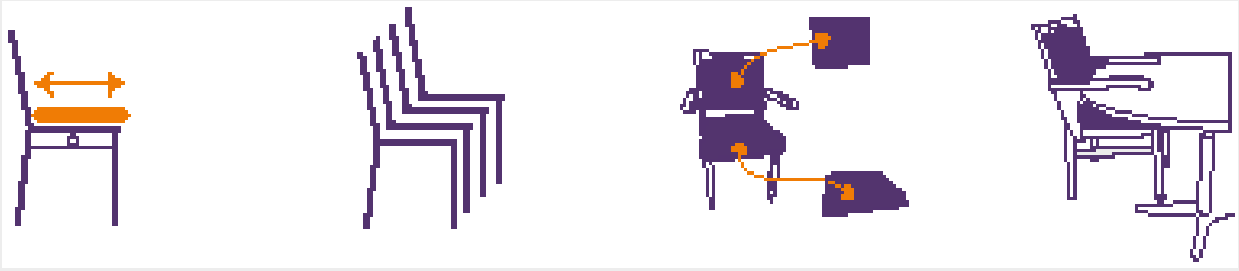


Can be lifted with one arm and a knee (makes cleaning easier).
Prevents contact between the seat and top of the table (hygiene).



The sliding armrest simplifies transfers.

Up to 19.7 in



Depth adjustable using a roller under the seat

Stackable

Replaceable seats and backrest

Can be placed on the table using its ergonomic handle



Wood

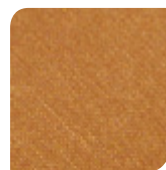


Oak

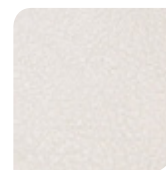


Birch

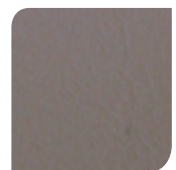
Finishes



Silvertex



Gingko



Valencia

Available shades



Adjustable seat depth



Stackable



Smart casters



Ergonomic handle

Technical features : dimensions hors tout (encombrement)

Chair

Height: 34,84 in
Depth: 21,65 in
Width: 18,9 in
Weight: 16,53 lbs

Bridge

Height: 34,84 in
Depth: 21,65 in
Width: 22,83 in
Weight: 19,84 lbs

Bridge +

Height: 34,84 in
Depth: 21,65 in
Width: 22,42 in
Weight: 21,60 lbs

Ask for the color chart!

* For further information concerning care products, contact your Domalys sales manager.

Find more information about our solutions:



domalys.com