

Stainless Steel Flushing Rim Sinks

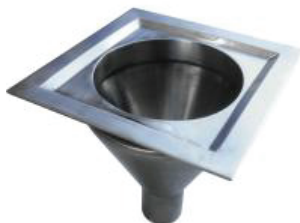
Handling & Installation Instructions



Stoddart Conical Flushing Rim Sink models - SPPL.FR.C.xxxx



WI - Weld In



DI - Drop In



WM - Wall Mounted



Dirty Utility Sink Bench

Application

Flush rim sinks are intended for use in commercial or medical facilities for the discharge of waste. The discharge into a flushing sink presents a cross connection risk and to mitigate this risk, a flushing sink shall be installed downstream of an AS 1172.2 compliant flushing device that contains an integral back siphonage mechanism - i.e. air break or pipe disconnect

Recommendations

Stoddart thoroughly inspect all products prior to despatch from our factory. Stoddart will not accept responsibility for shipping damage.

Upon receiving a Stoddart product, inspect immediately for any visible signs of shipping damage and notify the carrier immediately. When removing the product from its packing, be careful not to dent or scratch outer surface. Any concealed damage should be noted and reported immediately to the freight carrier. A claim should be filed with carrier if appropriate.

Responsibilities

The plumber is responsible and must ensure that the system is installed in accordance with all specific requirements of local codes / regulations and AS/NZS 3500 (parts 1 & 2).

Note: Plumber is required to provide the Fixture Trap.

If questions or complications should arise during the installation of a Stoddart product that cannot be solved using the accompanying instructions, please contact our offices or local representatives.

Referenced Australian Standards

Watermark Technical Std	WMTS.526	Flushing Sink
Building Code of Australia Volume 3	PCA	Plumbing Code of Australia
AS/NZS Std	3500.1	Water Services
AS/NZS Std	3500.2	Sanitary Plumbing & Drainage
AS Std	AS 1172.1	Water Closets Part 1 Pans
AS Std	AS 1172.2	Water Closets Part 2 Flushing devices & cistern inlet & outlet valves

Stainless Steel Flushing Rim Sinks

Handling & Installation Instructions



Installation Of Flushing Rim Sinks:

Connection Requirements

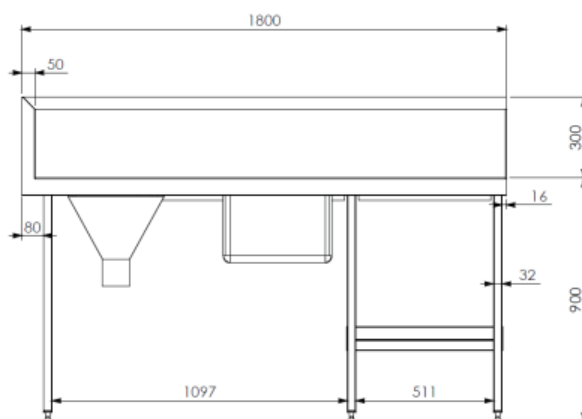
Stoddart Flushing Rim Sinks require the following:

- 100mm outlet connection for waste.
 - 25mm tube & pipe clamp connection for inlet to flushing rim.
 - To ensure flush volumes of 4.5L or 6L, proper sizing and flow requirements of pipe work is required. Refer to the specifications of the nominated flushing device (recommended GEBERIT Sigma 8).
- (For further clarification on this if required it is recommended to engage a qualified hydraulic designer).

Installation Of Flushing Rim Sink Benches / Cabinets:

All Stoddart bench mounted Flushing Rim Sinks are supplied with adjustable feet for easy installation.

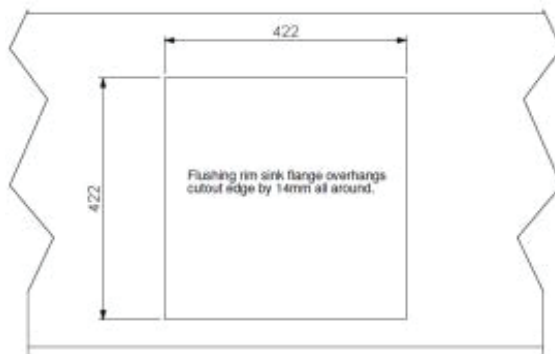
- Remove the packing from the sink and check for damage.
- Set unit in desired location, check level and adjust feet to suit.
- Connect inlet and outlet in accordance with AS/NZS 3500.
- Check for leaks.



Installation Of Drop In Flushing Rim Sinks:

All Stoddart Drop in Flushing Rim Sinks are supplied with bench top fixing clips for easy installation.

- Remove the packing from the sink and check for damage.
- Check the bench cut out size conforms with your specific ordered product, the image below is indicative only.
- Apply silicon sealant to the bench under the flange position and fix the sink to the bench with supplied bench top fixing clips.
- Connect inlet and outlet in accordance with AS/NZS 3500.
- Check for leaks.



BENCHTOP CUTOUT SIZE

Stainless Steel Flushing Rim Sinks

Handling & Installation Instructions



Cleaning

General Information

- Threaded fasteners can loosen in service. Regular inspection and adjustment should be carried out as required
- Regular cleaning is recommended for health and safety purposes and to prolong the life of the unit
- Do NOT use abrasive pads or cleaners on the stainless steel or any other metal parts of the unit
- Do NOT use industrial chemical cleaners, caustic based cleaners or bleaches and bleaching agents, many will damage the metals used on this unit
- When drying, metal surfaces should be wiped with a soft cloth in the same direction as grained polish

Corrosion Protection

- Stainless steel exhibits good resistance to corrosion however, if not properly maintained, stainless steel can rust (tea staining) and/or corrode
- Any sign of tea staining and/or corrosion should be thoroughly cleaned with warm soapy water and dried as soon as possible
- NEVER use abrasive pads or cleaners for cleaning
- All metal surfaces should be checked while cleaning for damage, scuffs or scrapes as these can lead to rust and further damage to the product
- Mild rust and/or corrosion can be treated with a commercial cleaning agent that contains citric/oxalic/nitric/phosphoric acid. Do
- DO NOT use cleaning agents with chlorides or other harsh chemicals as this can cause corrosion. After treatment, wash with warm (not hot) soapy water and dry thoroughly
- Thoroughly wipe the surfaces dry after cleaning and do NOT let water pool on the unit. Check crevices and folds for pooling

Surface Finish

- To protect the polish, stainless steel should be dried by wiping a dry soft cloth in the same direction as grained polish
- For NON-food contact surfaces, a light oil can be wiped on the surfaces with a cloth to enhance the stainless steel surface. Wipe in the direction of the grain

Customer Enquiries

All Customer enquiries regarding Stoddart Stainless Steel Flushing Rim Sinks should be referred to:

Customer Service Department
Stoddart
39 Forest Way,
Karawatha, Qld, 4117
Ph +61 7 34407600
Fax +61 7 33441000
Email: plumbing@stoddart.com.au
Web : www.stoddart.com.au

Stainless Steel Flushing Rim Sinks

Handling & Installation Instructions



Warranty & Registration

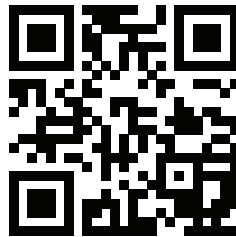
Australia and New Zealand Warranty

Warranty Period

All Stoddart manufactured and distributed products are covered by Stoddart's standard Australia and New Zealand Product Warranty (minimum 12 month on-site parts and labour, terms and conditions apply). Further to this standard warranty, certain products have access to an extended warranty. Full terms, conditions and exclusions can be found using the below Link/QR code.

Warranty Registration

To register your new product, Follow the below Link/QR code.



www.stoddart.com.au/warranty-information