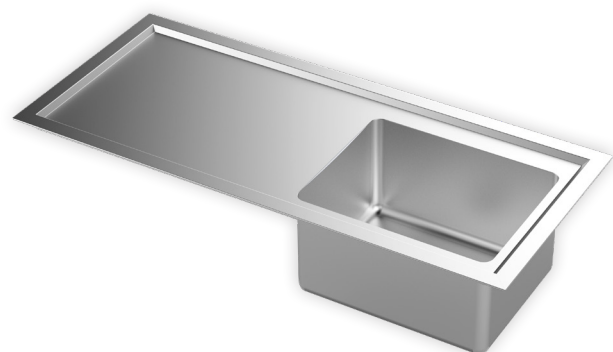


316 Grade Laboratory Sink - Drop In

Model: SPPL.LS.DI.xx.yyyy.z

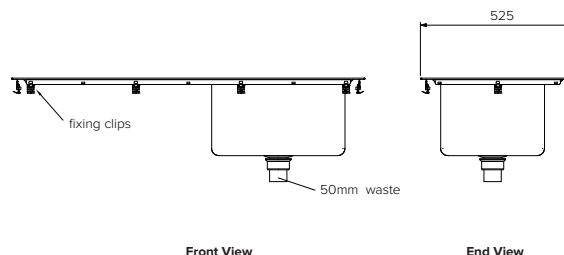
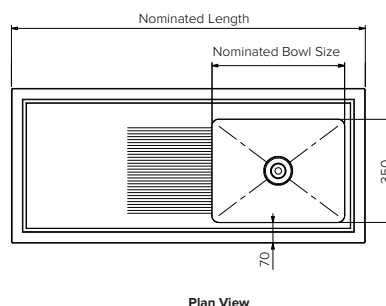
SPPL = Stoddart Plumbing Product
 LS = Laboratory Sink
 DI = Drop In
 xx = Bowl/s and Positions
 = 1BR = 1x Right Hand Bowl
 = 1BL = 1x Left Hand Bowl
 = 1BC = 1x Centre Bowl
 = 2BR = 2x Right Hand Bowls
 = 2BL = 2x Left Hand Bowls
 = 2BC = 2x Centre Bowls
 yyyy = Nominated Sink Length
 z = Bowl Sizes
 1 = 450 x 350 x 250
 2 = 400 x 400 x 300
 3 = 450 x 450 x 300
 4 = 600 x 450 x 300
 5 = 380 x 330 x 150

eg.: for specification and ordering quote
 Code: SPPL.LS.DI.1BR.1200.1



Features and Benefits:

- Purpose made for healthcare, education, laboratory's and hospital applications
- 316, 1.2mm stainless steel for strength and durability
- Radius corners for improved hygiene, better drainage and easy cleaning
- Fully welded and polished to no.4 grade satin finish
- Wet edge has angled sides for superior hygiene and cleaning ease
- Strong hold down clips secure sink into bench
- A range of wastes available to suit your application
- Multiple bowls will have a 70mm bridge separation
- Flat or corrugated drainers available
- Can be ordered with tap holes (specify at time of order)
- For 304 grade option refer to SPPL.BE.DI (7-16)



Specifications:

Construction: 316 stainless steel construction, no.4 satin finish.
 Waste Connection: Can be supplied with 50mm or 90mm waste. (optional stainless steel waste)
 Unit Fixing: The unit is supplied with bench top fixing clips.

Waste Options:



Indicative sink models for reference

Model No.	Description
SPPL.LS.DI.1BR.1200.1	1200 long single right hand single bowl lab sink. Bowl size to be 450 x 350 x 250 deep
SPPL.LS.DI.2BR.1200.1	1200 long single right hand double bowl lab sink. Bowl size to be 450 x 350 x 250 deep
SPPL.LS.DI.2BC.1500.2	1500 long double centre bowl lab sink. Bowl sizes to be 400 x 400 x 300 deep
SPPL.LS.DI.1BL.1800.5	1800 long single left hand bowl lab sink. Bowl size to be 380 x 330 x 150 deep
Custom units available	



Due to continuous product research and development, the information contained herein is subject to change without notice.

Revision: A - 21/06/2021

www.stoddart.com.au
 www.stoddart.co.nz