

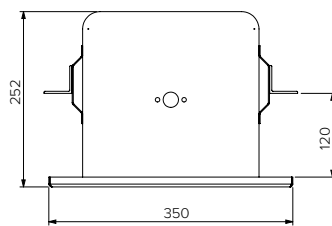
Security Wash Basin - In Wall

Model: SPPL.WB.IW.xx

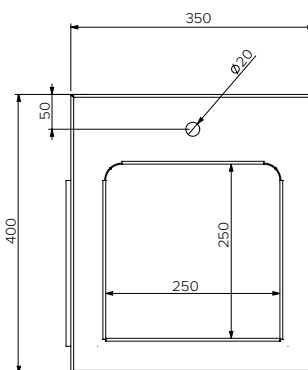
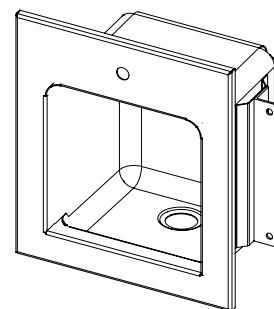
SPPL = Stoddart Plumbing Product
 WB = Wash Basin
 IW = In Wall
 xx = RF = Rear fix
 = FF = Front fix
 yy = PG = Pre Plumbed
 eg.: for specification and ordering quote
 Code: SPPL.WB.IW.FF.PG

Features and Benefits:

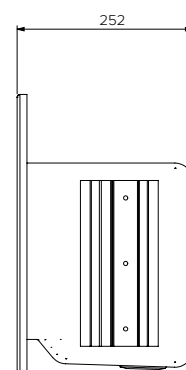
- Fully welded construction
- Pre-drilled for button and tap fittings
- Safe edge to prevent injury
- All internal corners to 25mm radius for safety and ease of cleaning
- Lower internal sink recessed below front lip to prevent spillage
- Security drain prevents contraband storage or drain blockage
- Vandal resistant 1.5mm gauge material
- Available with or without security bubbler head and push button



Plan View



Front View



End View

Specifications:

Construction: Fully welded seamless 1.5mm 304 grade stainless steel construction, no.4 satin finish (316 grade variation is optional extra).

Water Connection: 15mm (1/2" BSP). Pre-plumbed units provide timed flow, complete with bubbler and button.

Waste Connection: 40mm. Suits universal S&P trap

Unit Fixing: Wall fixing as per drawing.

Model No.	L x D x H (mm)
SPPL.WB.IW.xx.yy	350 x 252 x 400



Proudly Manufactured in Australia

Due to continuous product research and development, the information contained herein is subject to change without notice.

Revision: A - 11/06/2021

www.stoddart.com.au
 www.stoddart.co.nz