

## In-Floor Cleaners Sink

### Model: SPPL.CS.IF.xxx

SPPL = Stoddart Plumbing Product

CS = Cleaners Sink

IF = In-floor

xxx = CNR = Corner splashback

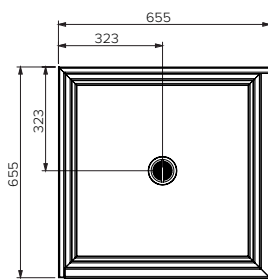
= STR = Straight

eg.: for specification and ordering quote

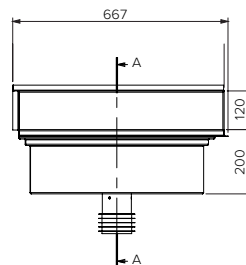
Code: SPPL.CS.IF.CNR

### Features and Benefits:

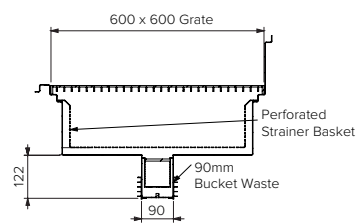
- Durable and hard wearing stainless steel
- Wedge wire grate has a slip resistant surface and provides stable support of buckets while filling and draining
- In-floor design eliminates lifting of buckets to minimise risk of back injury
- Allows finished floor to drain to trough
- Optional grate security lock down point available for locations prone to vandalism
- Large square perforated basket allows inspection of wash down water and separation of solids
- 90mm waste comes with a waste basket for catching solids
- Standard model has a 600mm x 600mm grate. Other size variations are available by request
- All optional tapware are WELS and Watermark approved



**Plan View**  
(Without grate & basket)



**Front View**



**Sectional View**

### Specifications:

**Construction:** 1.5mm 304 grade stainless steel construction, no.4 satin finish

**Waste Connection:** 90mm SS waste pipe for fitting into a 100mm outlet with finned key-seal. 90mm waste has a removable mesh basket and a fixed mesh strainer

**Unit Fixing:** Trough is to be set/ adjusted so top is level and at FFL prior to pouring floor

Model No.	L x D x H (mm)
SPPL.CS.IF.xxx	655 x 655 x 320

### Sold Separately

Tapware Options:



CMPL.0968



CMPL.0969



CMPL.0970



Due to continuous product research and development, the information contained herein is subject to change without notice.

Revision: A - 21/06/2021

[www.stoddart.com.au](http://www.stoddart.com.au)

[www.stoddart.co.nz](http://www.stoddart.co.nz)



Proudly Manufactured in Australia