

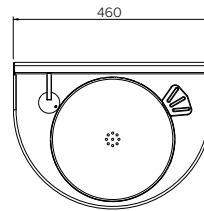
Security Wash Basin Round - Wall Mounted

Model: SPPL.WB.SR2.WM.xxx.yy.zz

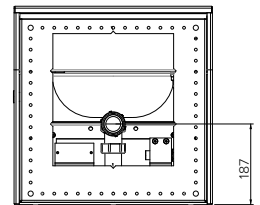
SPPL = Stoddart Plumbing Product
 WB = Wash Basin
 SR2 = Security Round
 WM = Wall Mounted
 xxx = E = Electronic button
 = MSB = Manual side button (non-security)
 = MSSB = Manual side security button
 = DSB = Hot & Cold plumbing
 = NB = No button
 = NP = No plumbing
 yy = FA = Front access (standard)
 = RA = Rear access
 zz = T = Toilet roll holder (optional)
 = WA = addition of sound suppression material
 & block behind bubbler
 eg.: for specification and ordering quote
 Code: SPPL.WB.SR2.WM.MSB.RA.T

Features and Benefits:

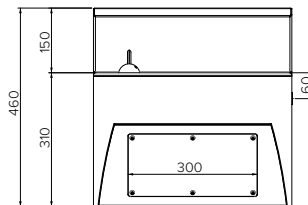
- Concealed plumbing and fixings for vandal resistance
- Front edge is rounded with a smooth radius for user safety
- Water conserving security bubbler controls water flow
- Low profile dome bubbler and wedge provides ligature resistant security
- Manual button options are positioned on the side of the unit
- Electronic button options are positioned on the side of the unit
- Electronic button can be interfaced with building water management control systems
- Front access panel is standard. Rear access option is available for high security prisons. Access panels are fastened with security screws & can be fixed with SS rivets after installation for added security
- If unit is to be positioned beside a Stoddart disabled pan, the basin can be ordered with an optional toilet roll holder in the side of the basin unit
- Designed for AS 1428.1 for access and mobility. For enhanced compliant access, taps are replaced by a single easy touch piezo button that requires just 3-5N of force to activate



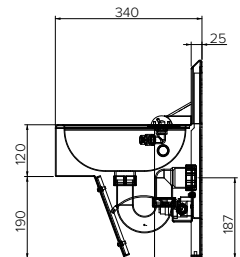
Plan View



Rear View



Front View



End View

Specifications:

Construction: **Fully welded seamless 2mm thick, 304 grade stainless steel construction, no.4 satin finish.** 316 grade variation is available as an optional extra.

Water Connection: 15mm (1/2" BSP). Pre-plumbed units provide timed flow, complete with bubbler and button

Waste Connection: 40mm. Suits universal S&P trap

Unit Fixing: Wall fixing as per rear view of drawing. Access panel fixed with 6mm security fixings or fastened with 5mm SS rivets after installation

Model No.	L x D x H (mm)
SPPL.WB.SR2.WM.xxx.yy.zz	460 x 340 x 460



Due to continuous product research and development, the information contained herein is subject to change without notice.

Revision: A -11/06/2021

www.stoddart.com.au
 www.stoddart.co.nz