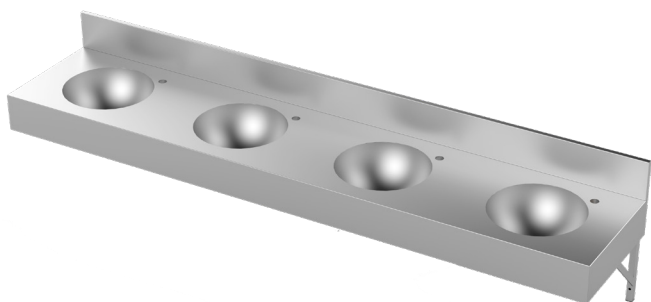


Vanity Bench with Round Bowls

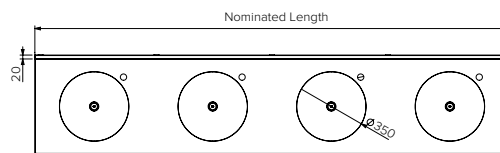
Model: SPPL.WB.VR.x.yyyy

SPPL = Stoddart Plumbing Product
 WB = Wash Basin
 VR = Vanity Round
 x = No. of bowls
 yyyy = Nominated Length
 eg.: for specification and ordering quote
 Code: SPPL.WB.VR.2.1200

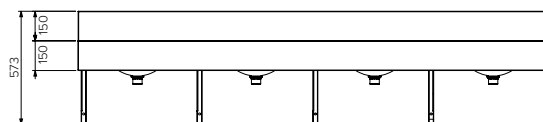


Features and Benefits:

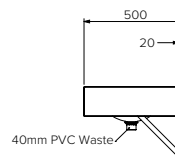
- Ideal for public amenities, hotels & clubs
- Round basins as standard, for easy cleaning and sleek aesthetics
- Integral splashback and apron for easy cleaning and superior durability in high use areas
- 350mm diameter hand basin bowls, fully welded and polished into the bench top
- Constructed from 1.2mm thick 304 grade stainless steel
- 32mm diameter tap holes
- 40mm waste outlet to the centre of each bowl
- All optional tapware are WELS and Watermark approved



Plan View



Front View



End View

Specifications:

Construction: Fully welded seamless 1.2mm thick, 304 grade stainless steel construction, no.4 satin finish.

Water Connection: By plumber

Waste Connection: 40mm PVC waste, supplied

Unit Fixing: The unit is supplied with wall mounting brackets with 10mm fixing holes. Recommended fixing height from top of unit to finished floor level is 800 - 830mm.

Model No.	L x D x H (mm)	No. of Basins
SPPL.WB.VR.2.1200	1200 x 500 x 300	2
SPPL.WB.VR.3.1800	1800 x 500 x 300	3
SPPL.WB.VR.4.2400	2400 x 500 x 300	4
Custom options available		

Sold Separately

Tapware Options:



Proudly Manufactured in Australia

Due to continuous product research and development, the information contained herein is subject to change without notice.

Revision: A - 11/01/2022

www.stoddart.com.au
 www.stoddart.co.nz