

Models:

SPPS-132L-P2-240
 SPPS-132R-P2-415
 SPPS-132L-P2-240
 SPPS-132R-P2-415

Code explanation:

SPPS = Standard Product Power Soak
 132 = Overall length (inches)
 X = L – Left to right operation
 = R – Right to left operation
 P2 = P200 control system
 Y = 240 – 240V electrical connection
 = 415 – 415V electrical connection

GENERAL SPECIFICATION

- 2mm 304 stainless steel construction throughout all tanks, drain boards and splashbacks.
- Low profile wash jets every 150mm of wash tank.
- Uniform wash action throughout entire volume of wash tank.
- Stainless steel self-draining pump housing and impeller.
- The heater is located in the wash tank along the rear wall under the perforated intake guard.
- 2330-watt 240v model
- 7000-watt heater 415v model.
- The factory preset value for the wash tank water temperature is 46°C and can be field-modified +/- 5° C
- Powered utensil basket optional.
- Watermarked 1/2" faucet assemblies.
- Watermarked 1/2" pre-rinse spray assemblies.
- Rear exit stainless steel ball valve drains for 100% drainage.
- Motor horsepower is proportional to the size of the tank.
- Modular design allows for quick and easy access to motor pump and all major components
- Average flow rate per wash jet is approximately 150 LPM.
- Wash tank supported by 32x32x1.2 304 stainless steel legs and adjustable feet.
- All wetted parts of the pump assembly are stainless steel.
- Continuous heavy duty (TEFC) motors (high service factor) are provided with all pump assemblies.
- Complies with Australian Electrical requirements AS NZS 60335.1, AS 3000, AS 3760. Complies with Sydney Water trade waste guidelines.

OPTIONAL EQUIPMENT

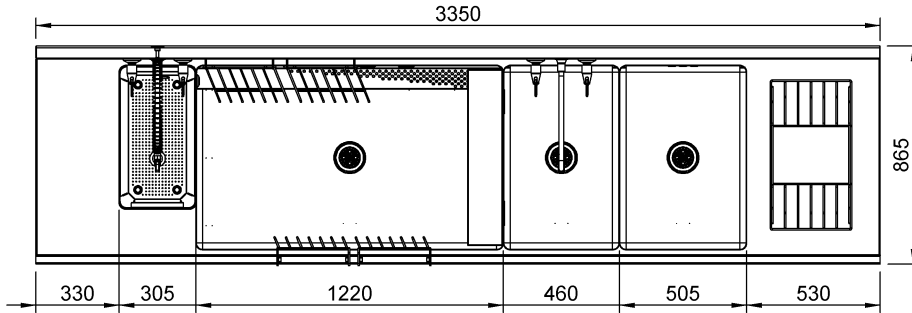
- Sheet pan racking system.
- Gastronome racking system.
- Pizza pan racking system.
- Powered utensil basket.
- Integrated chemical dispenser.
- Drain connection kit.
- Pan drying rack.
- Removable chemical shelf.
- JBZ mechanical join.

SYSTEM CONFIGURATION

Overall Size:	3350mm long x 865mm deep x 1200 high.
Soiled End:	330mm wide x 780mm FB x 30mm deep.
Scrape Tank:	305mm wide x 567mm FB x 100mm deep.
Wash Tank:	1220mm wide x 728mm FB x 530mm deep.
Rinse sink:	460mm wide x 728mm FB x 350mm deep.
Sanitiser Sink:	505mm wide x 728mm FB x 350mm deep.
Drain End:	530mm wide x 780mm FB x 30mm deep.
Power Supply:	415v 16A three phase. 240v 20A single phase.
Controller:	Model P200 solid state electronic.
Pump:	1.5 kW. (2 Hp.)
Plumbing:	1 only swivel faucet. 1 only overhead pre rinse spray head.

Due to continuous product research and development, the information contained herein is subject to change without notification.

SPPS-132X-P2-YYY



Models:

SPPS-132L-P2-240

SPPS-132R-P2-415

SPPS-132L-P2-240

SPPS-132R-P2-415

Code explanation:

SPPS = Standard Product Power Soak

132 = Overall length (inches)

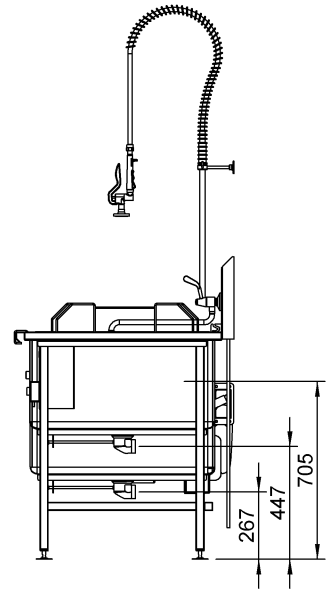
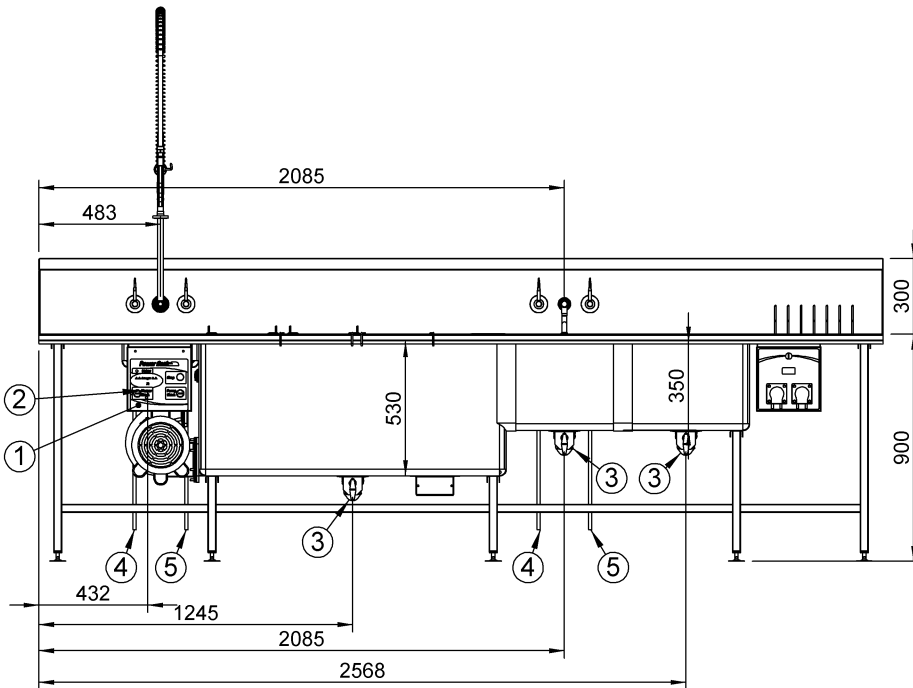
X = L – Left to right operation

= R – Right to left operation

P2 = P200 control system

Y = 240 – 240V electrical connection

= 415 – 415V electrical connection



1 Electrical Connection:

Single Phase 240v 20amp 50Hz

3 Phase 415V + N + E 16A 50Hz

2 Waste Connection:

2" BSP Male

3 Waste Connection:

1½" BSP Male

4 Water Connection Hot:

½" Copper

5 Water Connection Cold:

½" Copper

Due to continuous product research and development, the information contained herein is subject to change without notification.