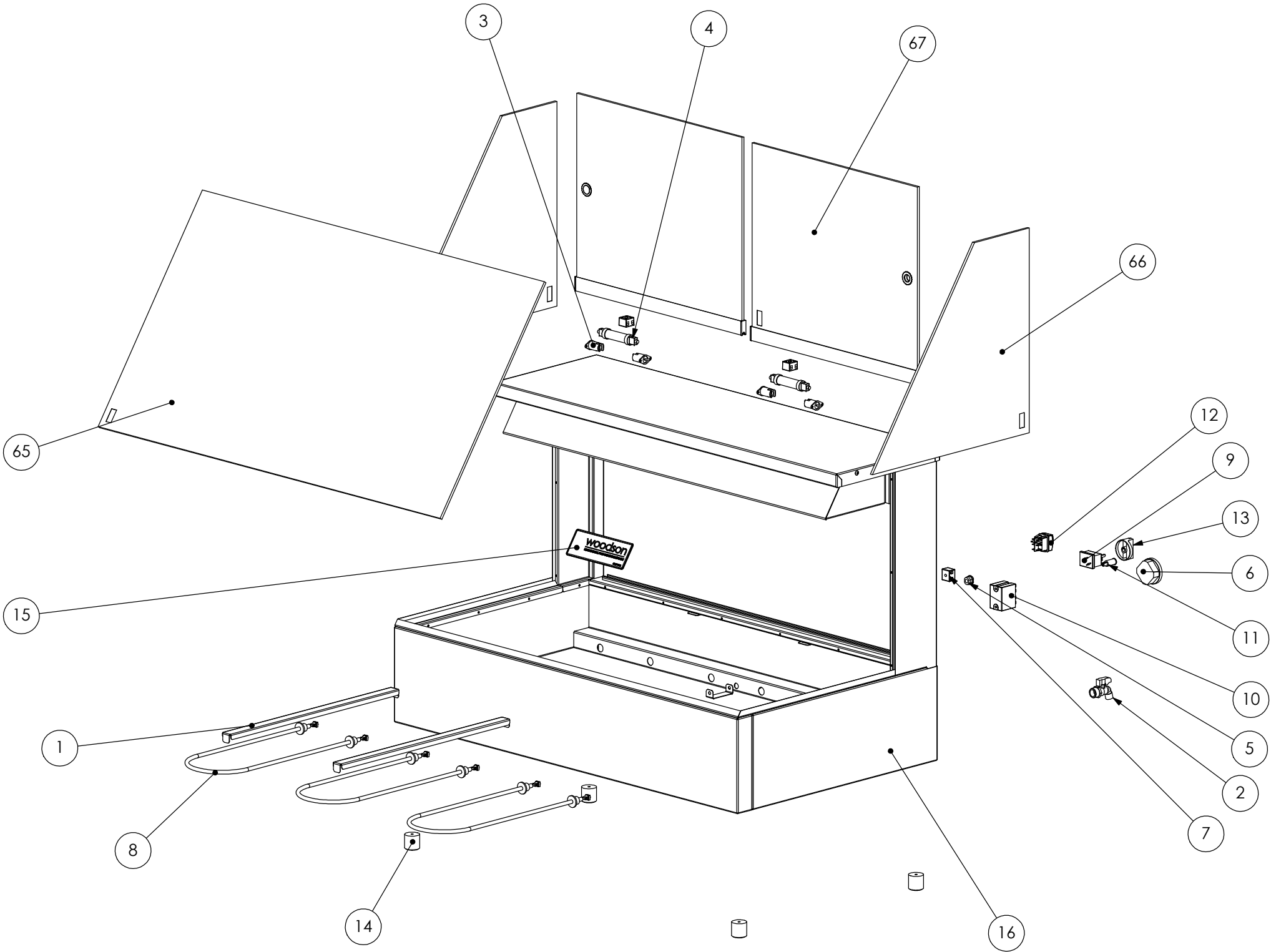


Item No.	Part Number	Spare Parts Description	Qty.
1	WOOD-p05 B	Pan Divider	2
2	CMPL-1156	Tap, Brass	1
3	CMEL-0818	Bulb Holder	4
4	CMEL-1665	Lamp	2
5	CMEL-0075	Cord Grip	1
6	CMEL-0235	Thermometer	1
7	CMEL-0308	Terminal Block	3
8	CMEL-0332	Element	3
9	CMEL-0333	120deg Thermostat	1
10	CMEL-0477	Relay	1
11	CMEL-0540	Indicator Light	1
12	CMEL-1354	Switch	1
13	CMEL-1524	Control Knob	1
14	CMGE-0276	Rubber Foot	4
15	CMGE-0394	Decal	1
16	SVMA-0113	BSP Pipe	1
65	GLAS-0002	Front Glass	1
66	GLAS-0330	Side Glass	2
67	GLAS-0008	Door Glass	2



REV/VER.	REVISED BY	DATE	REVISION DESCRIPTION	STATUS
B2	J.Descroizilles	5/07/2019	Updated Drain Assembly & moved drain hole forward 10mm. Updated gantry legs for better fitment	For Manufacture
B1	M Abdulla	04/03/2019	p-07 B dimensions changed (split into two parts, p-07 C & p-31 A). Bracket (p-32A) added to fasten the aforementioned parts. Drain & plumbing hole positions slightly adjusted. Plumbing fixture config. changed	For Manufacture
A3	N Wooler	03/02/2015	Revision\version change from A2 to A3. All parts made from 430 N4 material changed to 304 N4. Parts -p02 to -p14, -p17 to -p27 & -p30 revisions have changed from A to B. Parts -p15, -p16, -p28 & -p29 revisions have changed from B to C.	For Manufacture
A2	N Wooler	04/08/2014	Ceiling panel changed to allow for double sided tape. Parts -p15, -p16, -p28 and -p29 have changed revision.	For Manufacture
A1	N Wooler	24/06/2014	Original design.	For Manufacture



www.stoddart.com.au

					PART No: W-HFS23 B2	
					DESCRIPTION: Spare Parts	
					DWG No:	Dwg. Issue
					W-HFS23-d01 B2	1
DO NOT SCALE DRAWING					This drawing remains the property of Tom Stoddart Pty Ltd ABN 16 009 690 251 & cannot be reproduced without prior permission.	
					A3	Sheet 2 of 12

File Location: G:\03_Engineering\Woodson\W-HFS2x Hot Food Straight Glass\01_Solidworks\W-HFS23 3 Module\