

MetroMax Q Accessories



2" (51mm) Stackable Shelf Ledges

- Prevent items from falling off shelves.
- Snap on and off quickly. Easily stacked to contain larger items
- Corrosion proof: Polymer (High-Density Polypropylene) and 304 stainless steel.
- Ships fully assembled.

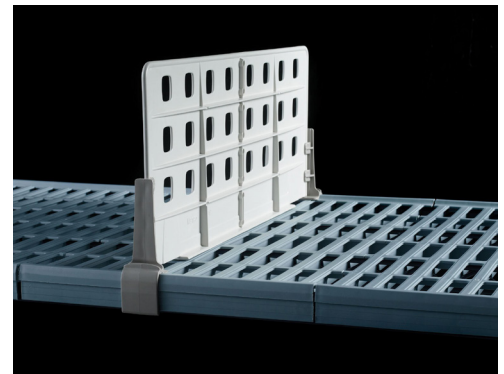
Q Ledge Model No.	Type	Nominal Length	
		(in.)	(mm)
MQLS18-2S	Side	18	457
MQLS21-2S	Side	21	530
MQLS24-2S	Side	24	610
MQL24-2S	Back	24	610
MQL30-2S	Back	30	760
MQL36-2S	Back	36	714
MQL42-2S	Back	42	1066
MQL48-2S	Back	48	1219
MQL54-2S	Back	54	1370
MQL60-2S	Back	60	1524
MQL72-2S	Back	72	1829



8" (203mm) Shelf Dividers - standard duty

- Use to create organized compartments or to simply separate shelf contents.
- Easily repositioned on grid and solid shelves.
- Corrosion proof: Polymer (High-Density Polypropylene).
- Three-piece design that ships fully assembled.

Q Ledge Model No.	Nominal Length	
	(in.)	(mm)
MQD18-8	18	457
MQD24-8	24	610



MetroMax Q Label Holder

- Designed to accept label cards or adhesive labels.
- Slot measures approximately 1 1/4" (32mm).
- Purchased to order.

Q Label Holder Model No.	Actual Length		Fits Shelf		Approx Pkd. Wt.	
	(in.)	(mm)	(in.)	(mm)	(lbs.)	(kg)
MQ04LH	4	102	All		0.03	0.01
MQ24LH	15 7/16	392	24	610	0.14	0.06
MQ36LH	27 7/16	697	36	914	0.30	0.13
MQ48LH	39 7/16	1002	48	1219	0.40	0.18
MQ60LH	51 7/16	1307	60	1524	0.50	0.22
MQ72LH	63 7/16	1611	72	1825	0.60	0.27



MetroMax Q Label Holder



Due to continuous product research and development, the information contained herein is subject to change without notice.

Revision: 01 - 27/08/2021

www.stoddart.com.au

www.stoddart.co.nz



MetroMax Q Accessories



Colour Shelf Markers

- Attach easily to shelf for content identification.
- Available in seven standard colors.
- Purchased to order.



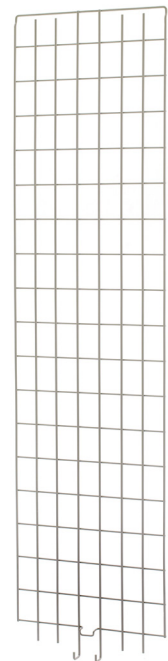
Q Model No.	Shelf Marker Colour	Length (in.)	Length (mm)
CSM6-BQ	Blue	6	152
CSM6-BQ	Green	6	152
CSM6-BQ	Red	6	152
CSM6-BQ	Tan	6	152
CSM6-BQ	White	6	152
CSM6-BQ	Yellow	6	152
CSM6-BQ	Gray	6	152



Enclosure Panels

- An efficient way of enclosing the sides and back of all shelves in a unit to contain stored contents.
- Slot opening: 3" W x 3⁷/₈" H (76 x 98mm).
- CRS wire with durable taupe epoxy finish.
- Mounting clips – Acetyl
- Replacement mounting clips for enclosures
Model No. RPMQ3-RODTAB - Bag of 8 clips + 1 enclosure adapter

Model No.	Width / Height (in.) (mm)		For use with post height (in.) (mm)		For use with shelf width (in.) (mm)		Approx Pkd. Wt. (lbs.) (kg)	
MEP35E	4	315 x 1300	54	1370	18	457	6 ¹ / ₄	2.8
MEP36E	15 ⁷ / ₁₆	315 x 1505	63	1600	18	457	7	3.2
MEP37E	27 ⁷ / ₁₆	315 x 1810	74	1880	18	457	8 ³ / ₄	4.0
MEP55E	39 ⁷ / ₁₆	467 x 1300	54	1370	24	610	9	4.1
MEP56E	51 ⁷ / ₁₆	467 x 1505	63	1600	24	610	10 ¹ / ₄	4.7
MEP57E	63 ⁷ / ₁₆	467 x 1810	74	1880	24	610	11 ³ / ₄	5.3



Panels Required to Enclose Both Ends of Shelving Unit or Cart

Post Height	Shelf Width		
	18" (457mm)	21" (530mm)	24" (610mm)
54" (1370mm)	(2) MEP35E	(2) MEP55E	(2) MEP55E
63" (1600mm)	(2) MEP36E	(2) MEP56E	(2) MEP56E
74" (1800mm)	(2) MEP37E	(2) MEP57E	(2) MEP57E



MetroMax Q Mounting Clip

Post Height	Shelf Length						
	30" (760mm)	36" (914mm)	42" (1066mm)	48" (1219mm)	54" (1370mm)	60" (1524mm)	72" (1825mm)
54" (1370mm)	(2) MEP35E	(1) MEP35E (1) MEP55E	(2) MEP55E	(2) MEP35E (1) MEP55E	(1) MEP35E (2) MEP55E	(3) MEP55E	(1) MEP35E (3) MEP55E
63" (1600mm)	(2) MEP36E	(1) MEP36E (1) MEP56E	(2) MEP56E	(2) MEP36E (1) MEP56E	(1) MEP36E (2) MEP56E	(3) MEP56E	(1) MEP36E (3) MEP56E
74" (1800mm)	(2) MEP37E	(1) MEP37E (1) MEP57E	(2) MEP57E	(2) MEP37E (1) MEP57E	(1) MEP37E (2) MEP57E	(3) MEP57E	(1) MEP37E (3) MEP57E

Due to continuous product research and development, the information contained herein is subject to change without notice.

Revision: 01 - 27/08/2021

www.stoddart.com.au

www.stoddart.co.nz



Cutting Board and Tray Drying Rack System

- Rack is mounted to standard MetroMax Q shelf.
- Promotes safe air drying of cutting boards and trays.
- 1 1/8" (28mm) and 3" (76mm) slide spacing available.



Q Model No.	Fits Shelf		Upright Spacing		Upright Height		Tray Capacity	Approx. Pkd. Wt.	
	(in.)	(mm)	(in.)	(mm)	(lbs.)	(kg)		(lbs)	(kg)
MTR2448XE	24 x 48	457 x 1219	1 1/8	28	6	150	34	18.0	8.2
MTR2448XEA	24 x 48	457 x 1219	3	76	6	150	14	13.0	5.9



Post Clamp - Model No. 9994X

Adds stability by joining posts of two separate units together. With it, each unit is supported by four posts and buttressed by the adjacent unit. Made completely from stainless steel.



Foot Plate

- Zinc - Model No. 9993Z
- Stainless Steel - Model No. 9993S

Used to add stability to the shelving unit or to bolt units to the floor.

Plated Stem Castors with resilient rubber treads

- Solid resilient rubber material. Plated horns, stems, axles, and brakes (optional) are appropriate for dry environments and for medium duty applications.
- Ball bearing swivel. Select models are NSF listed. Bumpers included.
- Brake style: side brake.



5M



5MB

Model No.	Wheel Diameter		Face		Load Rating		Type	Wheel Tread	Temperature Range (Continuous usage)		Approx. Pkd. Wt.	
	(in.)	(mm)	(in.)	(mm)	(lbs.)	(kg)			(Fahrenheit)	(Celsius)	(lbs)	(kg)
5M	5	127	1/4	32	200	90	Stem / Swivel	Resilient, Flat	-30° - 160°	-34° - 71°	2 1/2	1.1
5MB	5	127	1/4	32	200	90	Stem / Brake	Resilient, Flat	-30° - 160°	-34° - 71°	2 5/8	1.2

Plated Stem Castors with Polyurethane tread

- Chrome plated horns, stems, axles, and brakes (optional) are appropriate for dry environments and for medium duty applications.
- Non marking polyurethane flat tread and polyethylene hub. Ball bearing swivel and axle. NSF listed. Bumpers included.
- Brake style: side brake.



5M



5MB

Model No.	Wheel Diameter		Face		Load Rating		Type	Wheel Tread	Temperature Range (Continuous usage)		Approx. Pkd. Wt.	
	(in.)	(mm)	(in.)	(mm)	(lbs.)	(kg)			(Fahrenheit)	(Celsius)	(lbs)	(kg)
5MP	5	127	1/4	32	300	135	Stem / Swivel	Polyurethane, Flat	-30° - 180°	-34° - 82°	2 1/8	0.9
5MPB	5	127	1/4	32	300	135	Stem / Brake	Polyurethane, Flat	-30° - 180°	-34° - 82°	2 1/4	1

Replacement Bumper for MetroMax Q - Model No. M9992DBX



Due to continuous product research and development, the information contained herein is subject to change without notice.

Revision: 01 - 27/08/2021

www.stoddart.com.au

www.stoddart.co.nz

Adjustable Slides

- Slides can be adjusted left to right to accommodate a variety of pan, tray, and container sizes.
- Corrosion-resistant taupe epoxy finish.

Q Model No.	Fits Shelf Width		Length	Approx. Pkd. Wt.	
	(in.)	(mm)		(lbs.)	(kg)
MQ18SE	18	455	Adjustable	12 ³ / ₄	6
MQ24SE	24	610	Adjustable	12 ³ / ₄	6



“S” Hooks

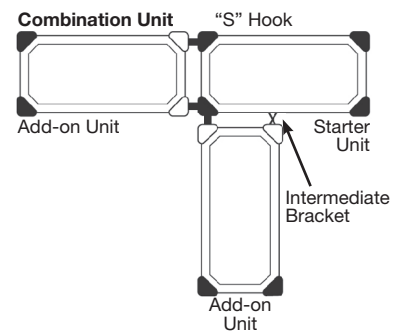
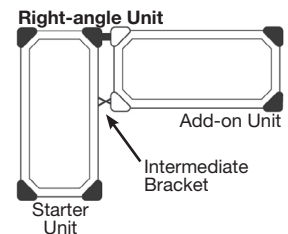
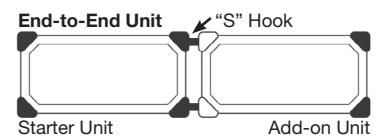
- “S” Hooks eliminate the need for adjacent posts saving time and money. Right angle units create open corners in tight spaces for easy access. Use the components below when configuring units from loose shelves and posts.



MetroMax Q End-to-End Unit



MetroMax Q Right-angle Unit



“S” Hooks per storage level	MetroMax Q
End-to-End	(2) M9995
Right Angle	(2) M9995 (1) Q9995Z
Combination Unit	(3) M9995 (1) Q9995Z



“S” Hook
- Model No. M9995



Intermediate “S” Hook Kit
- Model No. Q9995Z